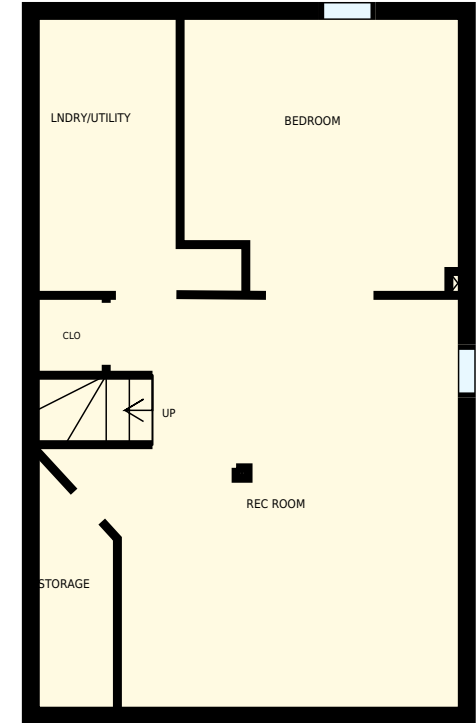
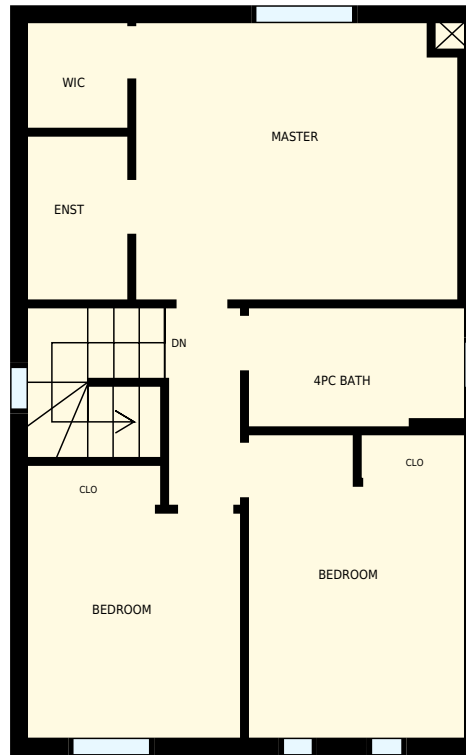
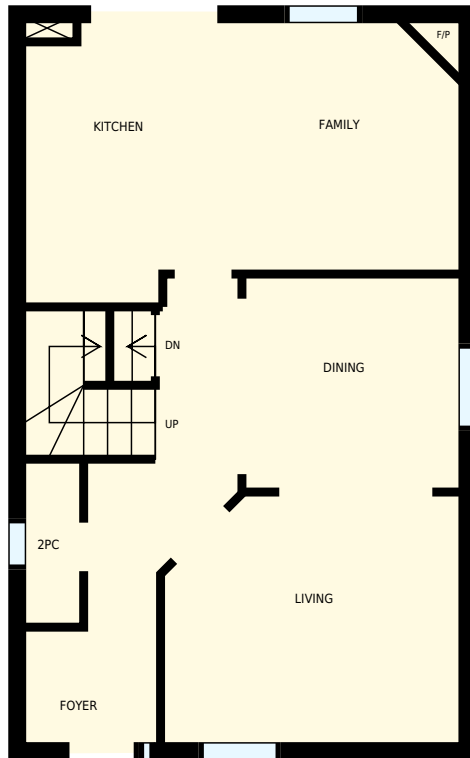


73 Hewitt Crescent, Ajax, ON

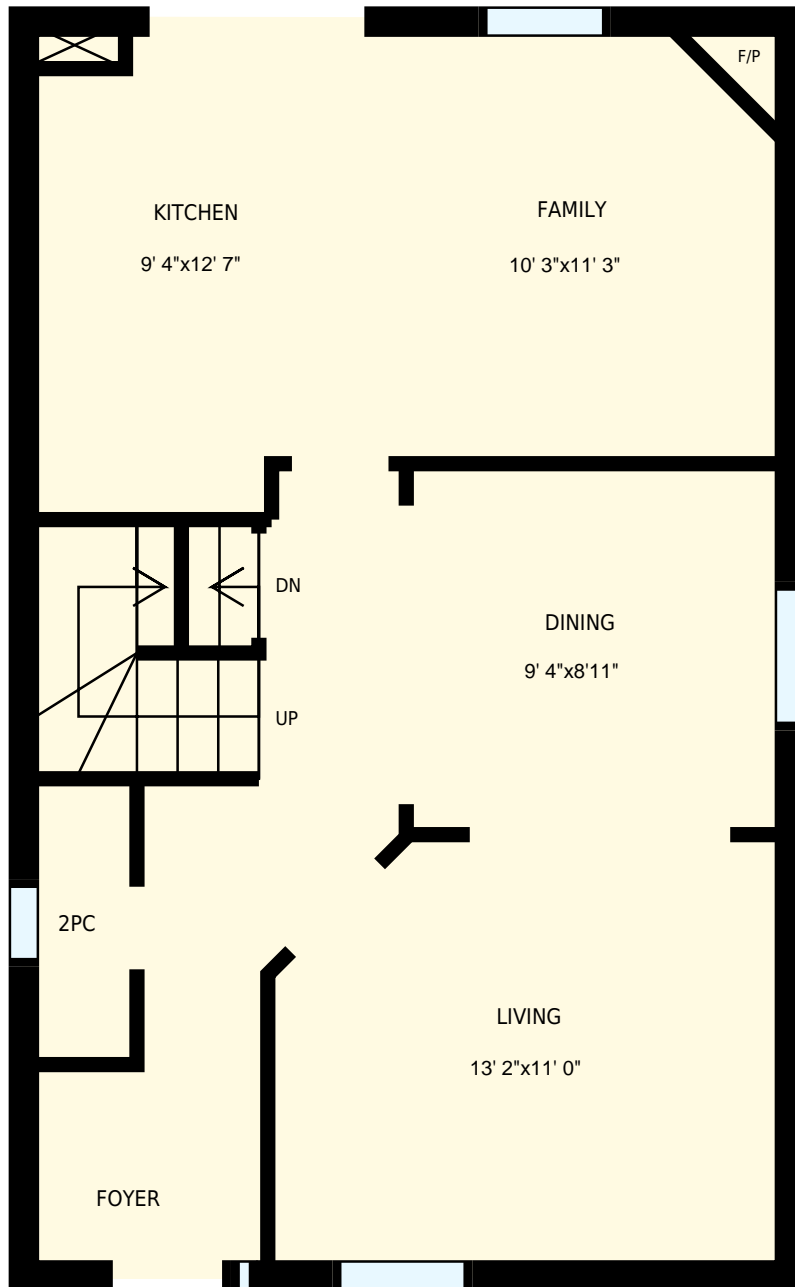
Total Exterior Area Above Grade 1423 sq. ft



Main floor
Exterior Area 714 sq. ft

2nd floor
Exterior Area 709 sq. ft

Basement



73 Hewitt Crescent, Ajax, ON

PREPARED FOR:

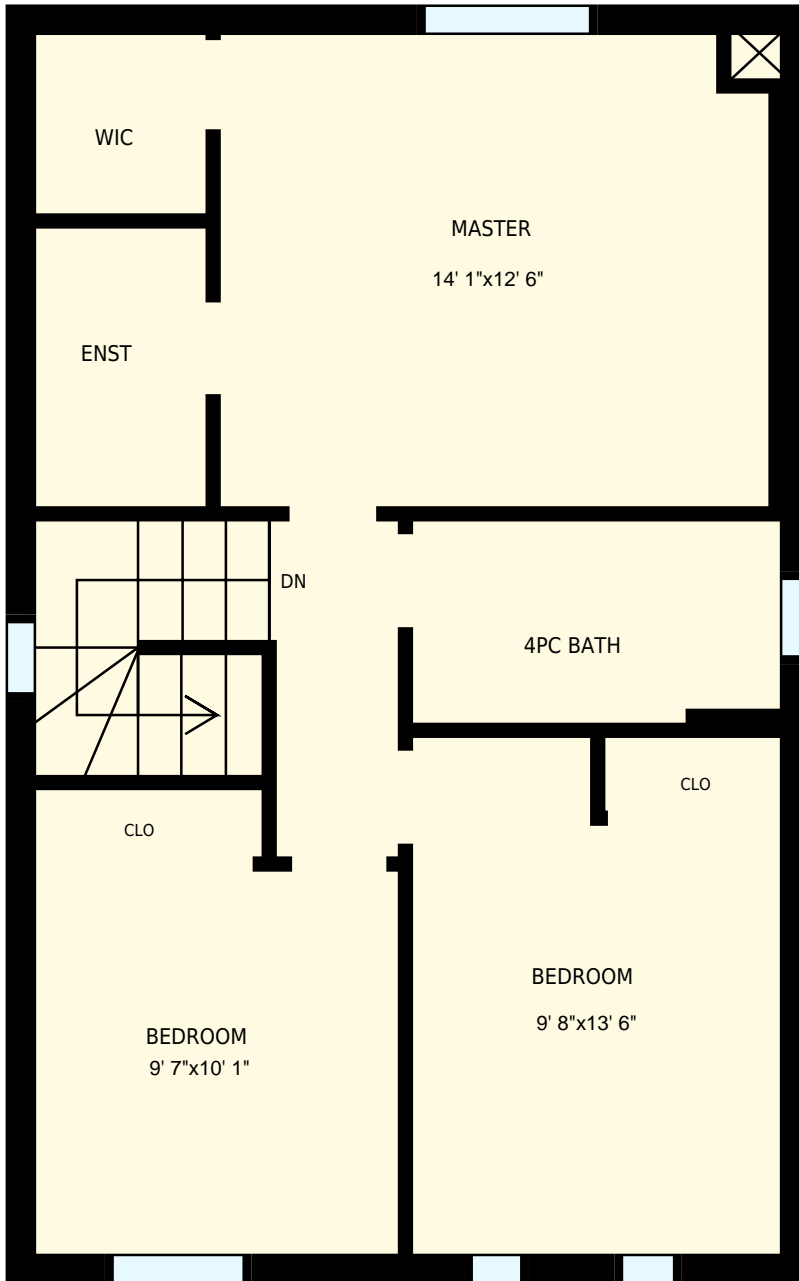
Main floor

Interior Area 629 sq. ft
Exterior Area 714 sq. ft

 Included Area

PREPARED ON:
Jul, 2016

All rooms dimensions and floor areas must be considered approximate and are subject to independent verification. For method of measurement please see <http://youriguide.com/measure/>.

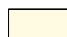


73 Hewitt Crescent, Ajax, ON

PREPARED FOR:

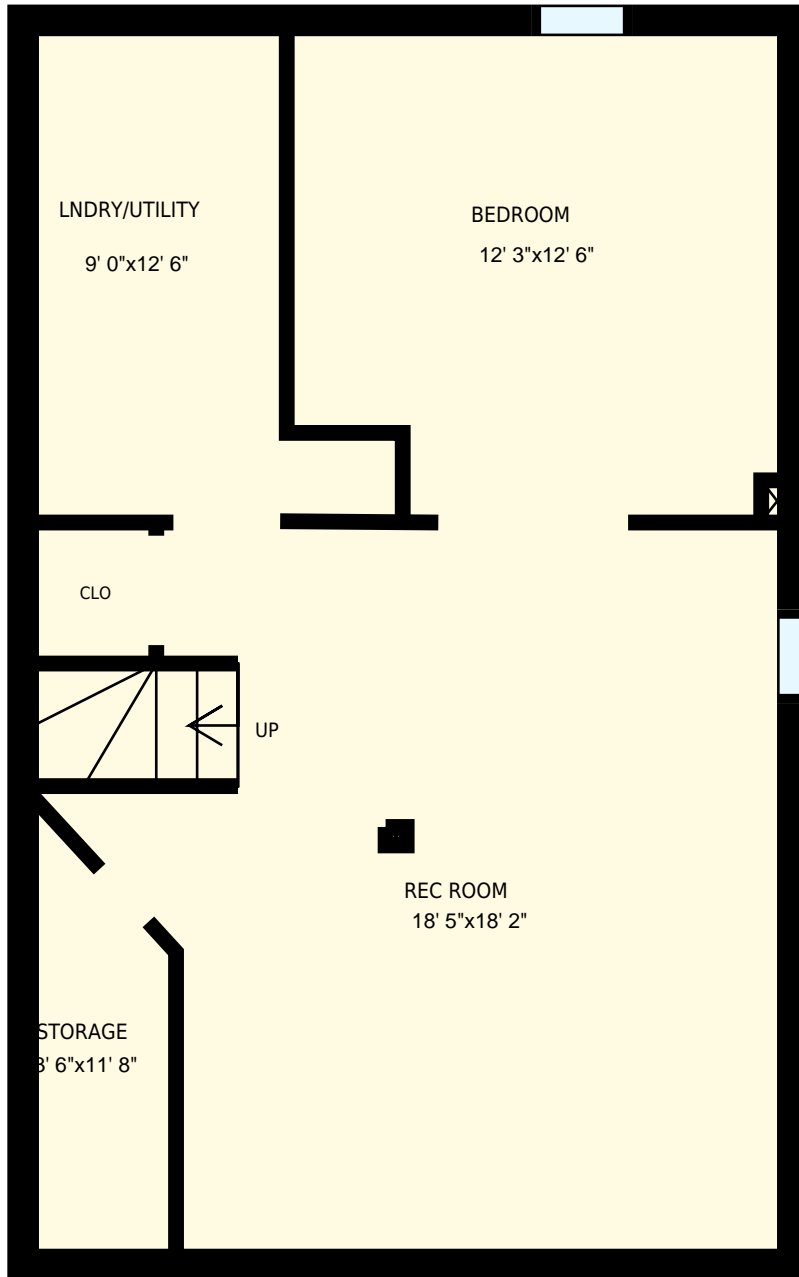
2nd floor

Interior Area 625 sq. ft
Exterior Area 709 sq. ft

 Included Area

PREPARED ON:
Jul, 2016

All rooms dimensions and floor areas must be considered approximate and are subject to independent verification. For method of measurement please see <http://youriguide.com/measure/>.



73 Hewitt Crescent, Ajax, ON		PREPARED FOR:
Basement		
Interior Area	577 sq. ft	PREPARED ON:
Exterior Area		Jul, 2016
<small>All rooms dimensions and floor areas must be considered approximate and are subject to independent verification. For method of measurement please see http://youriguide.com/measure/.</small>		