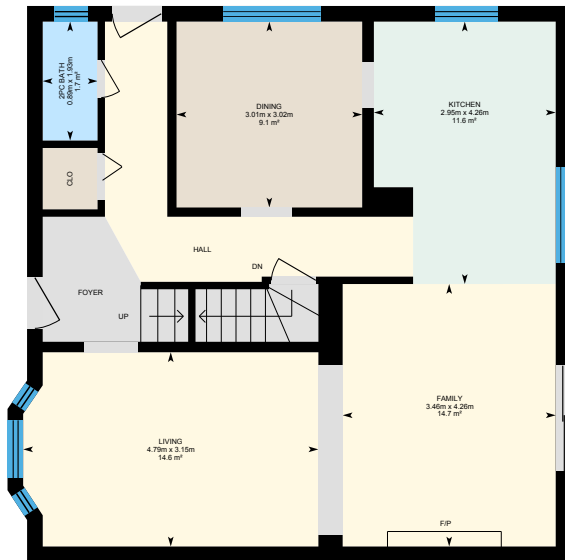
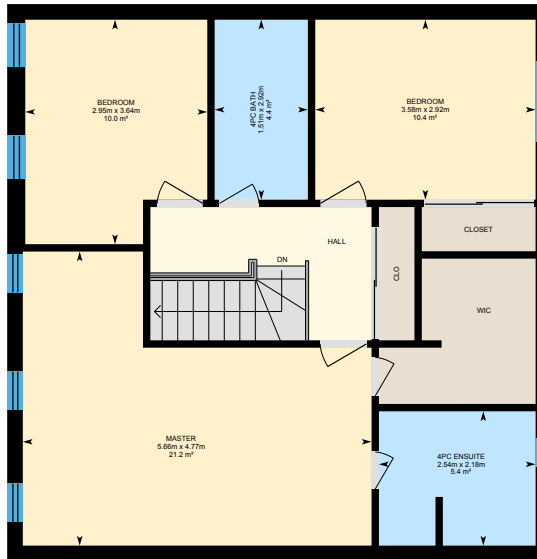


# 237 Eastlawn St, Oshawa, ON

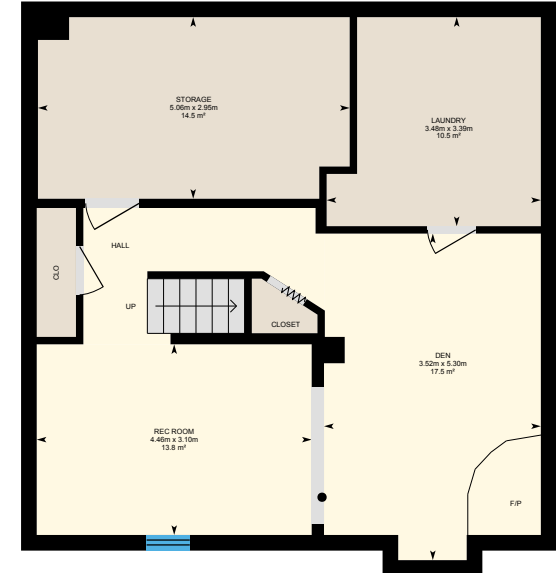
Main Building: Total Exterior Area Above Grade 160.0 m<sup>2</sup>



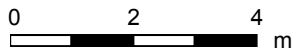
**Main Floor**  
Exterior Area 80.3 m<sup>2</sup>



**2nd Floor**  
Exterior Area 79.7 m<sup>2</sup>

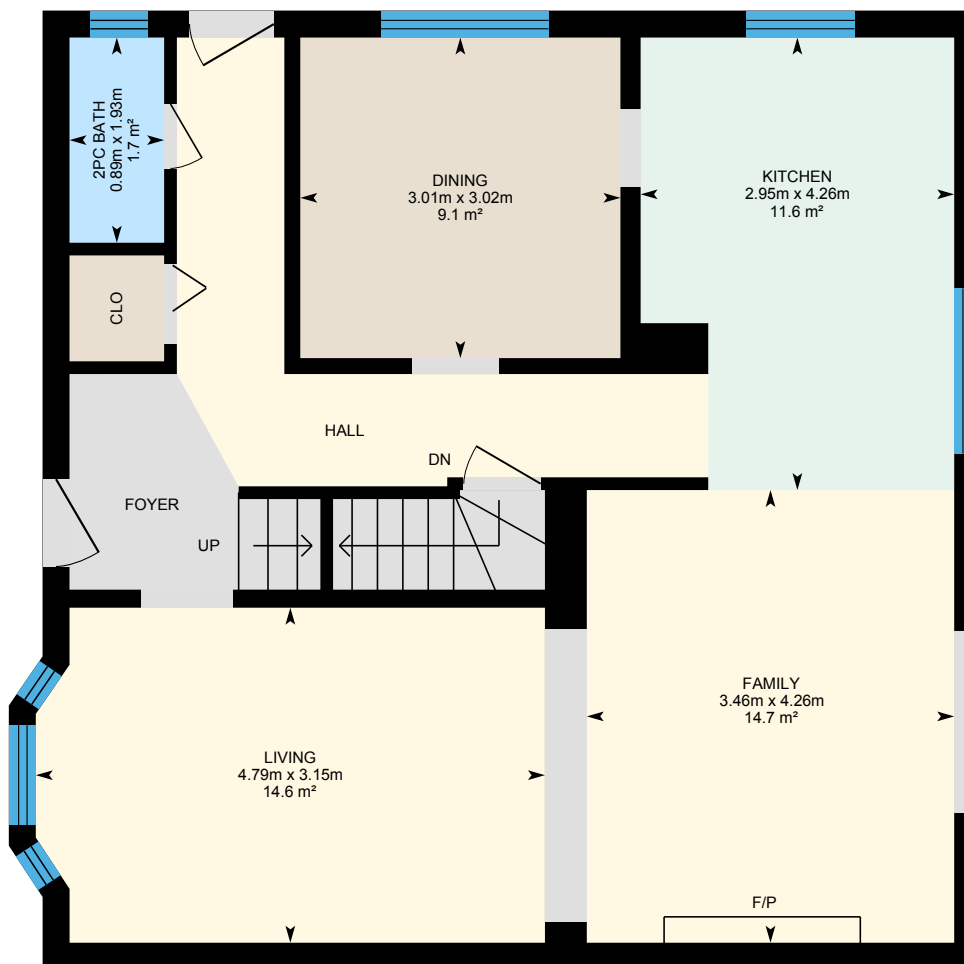


**Basement (Below Grade)**  
Exterior Area 78.1 m<sup>2</sup>



# 237 Eastlawn St, Oshawa, ON

**Main Floor** Total Exterior Area 80.3 m<sup>2</sup>  
Total Interior Area 71.5 m<sup>2</sup>



0 1 2 m

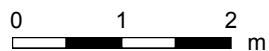
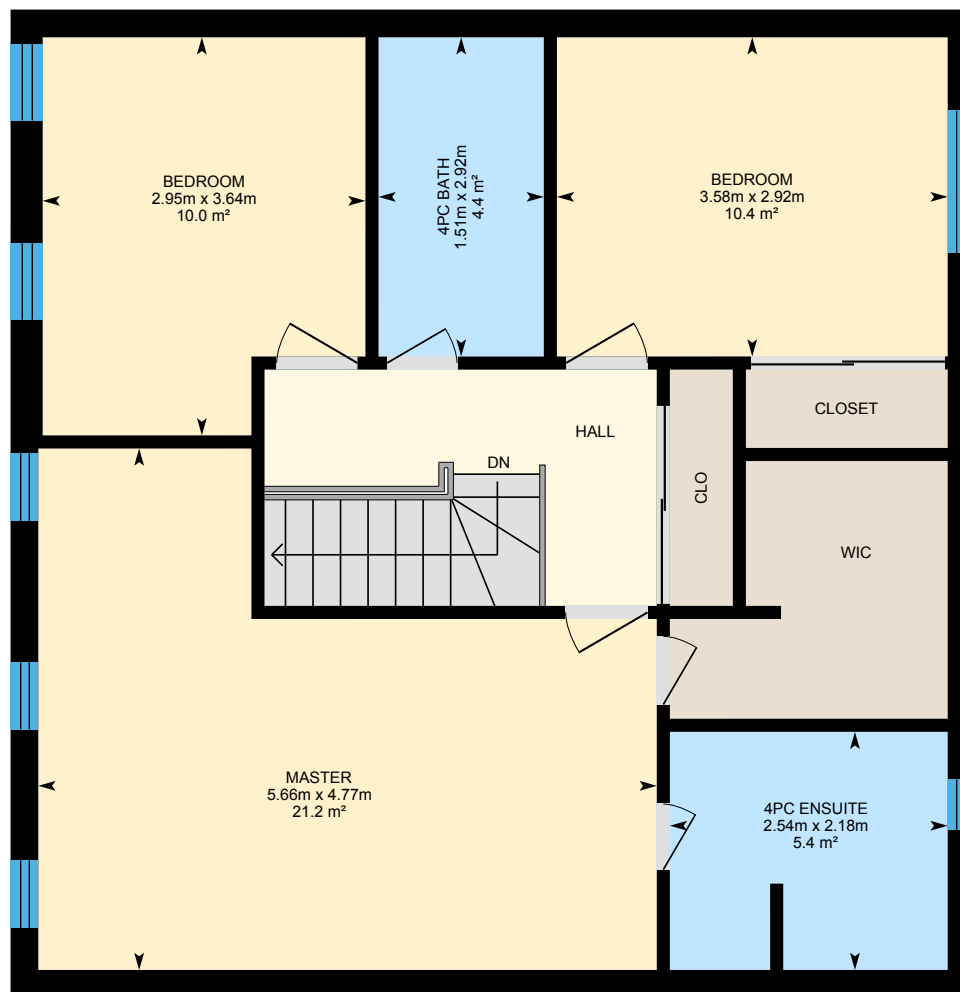
PREPARED: Jul, 2019



White regions are excluded from total floor area. All room dimensions and floor areas must be considered approximate and are subject to independent verification. For method of measurement please see <https://youriguide.com/measure/>.

# 237 Eastlawn St, Oshawa, ON

**2nd Floor** Total Exterior Area 79.7 m<sup>2</sup>  
Total Interior Area 70.9 m<sup>2</sup>

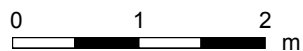
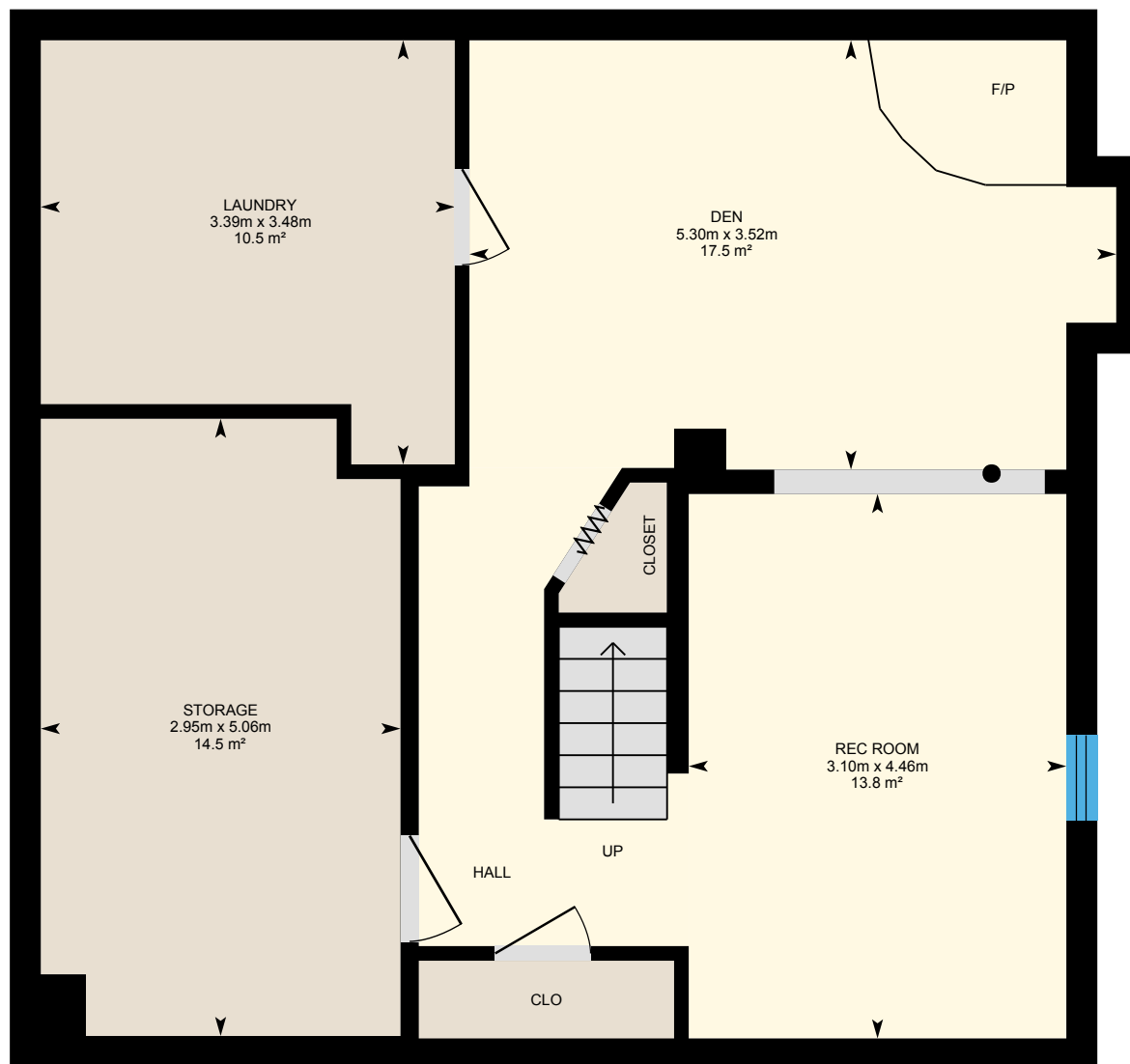


PREPARED: Jul, 2019



# 237 Eastlawn St, Oshawa, ON

**Basement** Total Exterior Area 78.1 m<sup>2</sup>  
Total Interior Area 69.2 m<sup>2</sup>



PREPARED: Jul, 2019



# 237 Eastlawn St, Oshawa, ON

## Property Details

### Room Measurements

Only major rooms are listed. Some listed rooms may be excluded from total interior floor area (e.g. garage). Room dimensions are largest length and width; parts of room may be smaller. Room area is not always equal to product of length and width.

#### Main Building

##### MAIN FLOOR

2pc Bath: 0.89m x 1.93m | 1.7 m<sup>2</sup>

Dining: 3.01m x 3.02m | 9.1 m<sup>2</sup>

Family: 3.46m x 4.26m | 14.7 m<sup>2</sup>

Kitchen: 2.95m x 4.26m | 11.6 m<sup>2</sup>

Living: 4.79m x 3.15m | 14.6 m<sup>2</sup>

##### 2ND FLOOR

4pc Bath: 1.51m x 2.92m | 4.4 m<sup>2</sup>

4pc Ensuite: 2.54m x 2.18m | 5.4 m<sup>2</sup>

Bedroom: 3.58m x 2.92m | 10.4 m<sup>2</sup>

Bedroom: 2.95m x 3.64m | 10.0 m<sup>2</sup>

Master: 5.66m x 4.77m | 21.2 m<sup>2</sup>

##### BASEMENT

Den: 3.52m x 5.30m | 17.5 m<sup>2</sup>

Laundry: 3.48m x 3.39m | 10.5 m<sup>2</sup>

Rec Room: 4.46m x 3.10m | 13.8 m<sup>2</sup>

Storage: 5.06m x 2.95m | 14.5 m<sup>2</sup>

### Floor Area Information

For explanation of floor area calculations and method of measurement please see <https://youriguide.com/measure/>.

#### Main Building

##### MAIN FLOOR

Interior Area: 71.5 m<sup>2</sup>

Perimeter Wall Length: 34.9 m

Perimeter Wall Thickness: 25 cm

Exterior Area: 80.3 m<sup>2</sup>

##### 2ND FLOOR

Interior Area: 70.9 m<sup>2</sup>

Perimeter Wall Length: 34.7 m

Perimeter Wall Thickness: 25 cm

Exterior Area: 79.7 m<sup>2</sup>

##### BASEMENT (Below Grade)

Interior Area: 69.2 m<sup>2</sup>

Perimeter Wall Length: 35.0 m

Perimeter Wall Thickness: 25 cm

Exterior Area: 78.1 m<sup>2</sup>

#### Total Above Grade Floor Area

Main Building Interior: 142.3 m<sup>2</sup>

**Main Building Exterior: 160.0 m<sup>2</sup>**