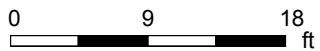
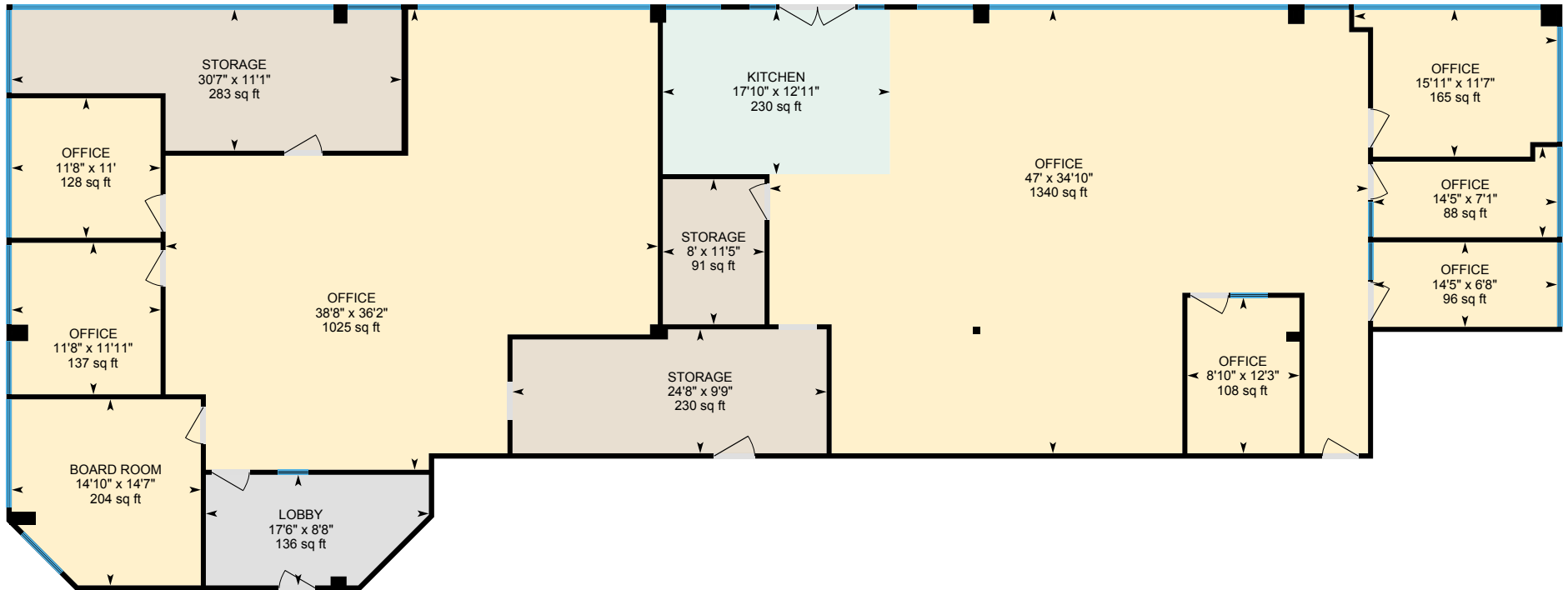


# 1465 Pickering Pkwy, Pickering, ON

Main Floor Total Exterior Area 4530 sq ft  
Total Interior Area 4393 sq ft



PREPARED: Oct, 2019



White regions are excluded from total floor area. All room dimensions and floor areas must be considered approximate and are subject to independent verification. For method of measurement please see <https://youriguide.com/measure/>.

# 1465 Pickering Pkwy, Pickering, ON

## Property Details

### Room Measurements

Only major rooms are listed. Some listed rooms may be excluded from total interior floor area (e.g. garage). Room dimensions are largest length and width; parts of room may be smaller. Room area is not always equal to product of length and width.

### Main Building

#### MAIN FLOOR

Board Room: 14'7" x 14'10" | 204 sq ft  
Kitchen: 12'11" x 17'10" | 230 sq ft  
Lobby: 8'8" x 17'6" | 136 sq ft  
Office: 6'8" x 14'5" | 96 sq ft  
Office: 11'11" x 11'8" | 137 sq ft  
Office: 11'7" x 15'11" | 165 sq ft  
Office: 7'1" x 14'5" | 88 sq ft  
Office: 11' x 11'8" | 128 sq ft  
Office: 12'3" x 8'10" | 108 sq ft  
Office: 36'2" x 38'8" | 1025 sq ft  
Office: 34'10" x 47' | 1340 sq ft  
Storage: 11'5" x 8' | 91 sq ft  
Storage: 9'9" x 24'8" | 230 sq ft  
Storage: 11'1" x 30'7" | 283 sq ft

### Floor Area Information

For explanation of floor area calculations and method of measurement please see <https://youriguide.com/measure/>.

### Main Building

#### MAIN FLOOR

Interior Area: 4393 sq ft  
Perimeter Wall Length: 328 ft  
Perimeter Wall Thickness: 5.0 in  
Exterior Area: 4530 sq ft

### Total Above Grade Floor Area

Main Building Interior: 4393 sq ft  
**Main Building Exterior: 4530 sq ft**