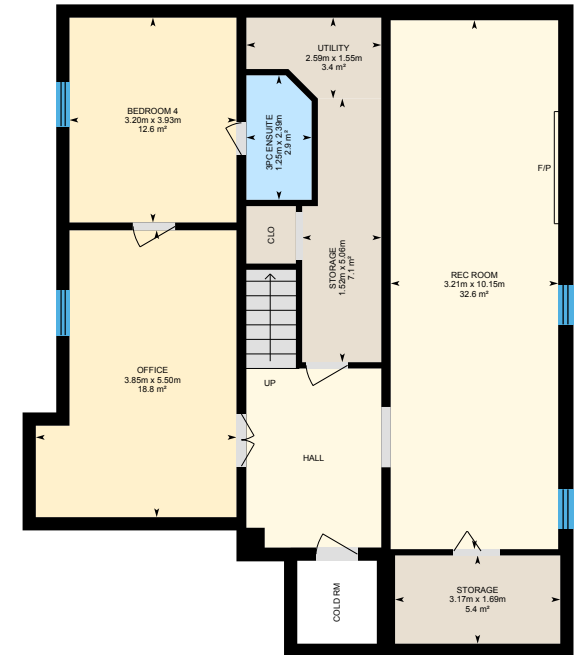
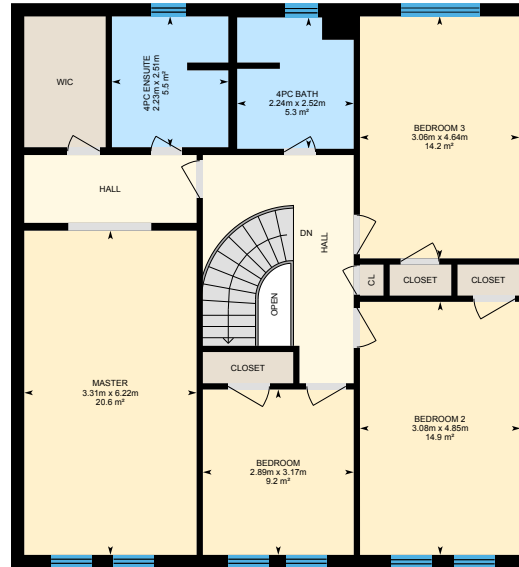


4 Epping Ct, Markham, ON

Main Building: Total Exterior Area Above Grade 223.9 m²



4 Epping Ct, Markham, ON

Main Floor Total Exterior Area 116.3 m²
Total Interior Area 104.8 m²



0 1 2 m

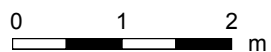
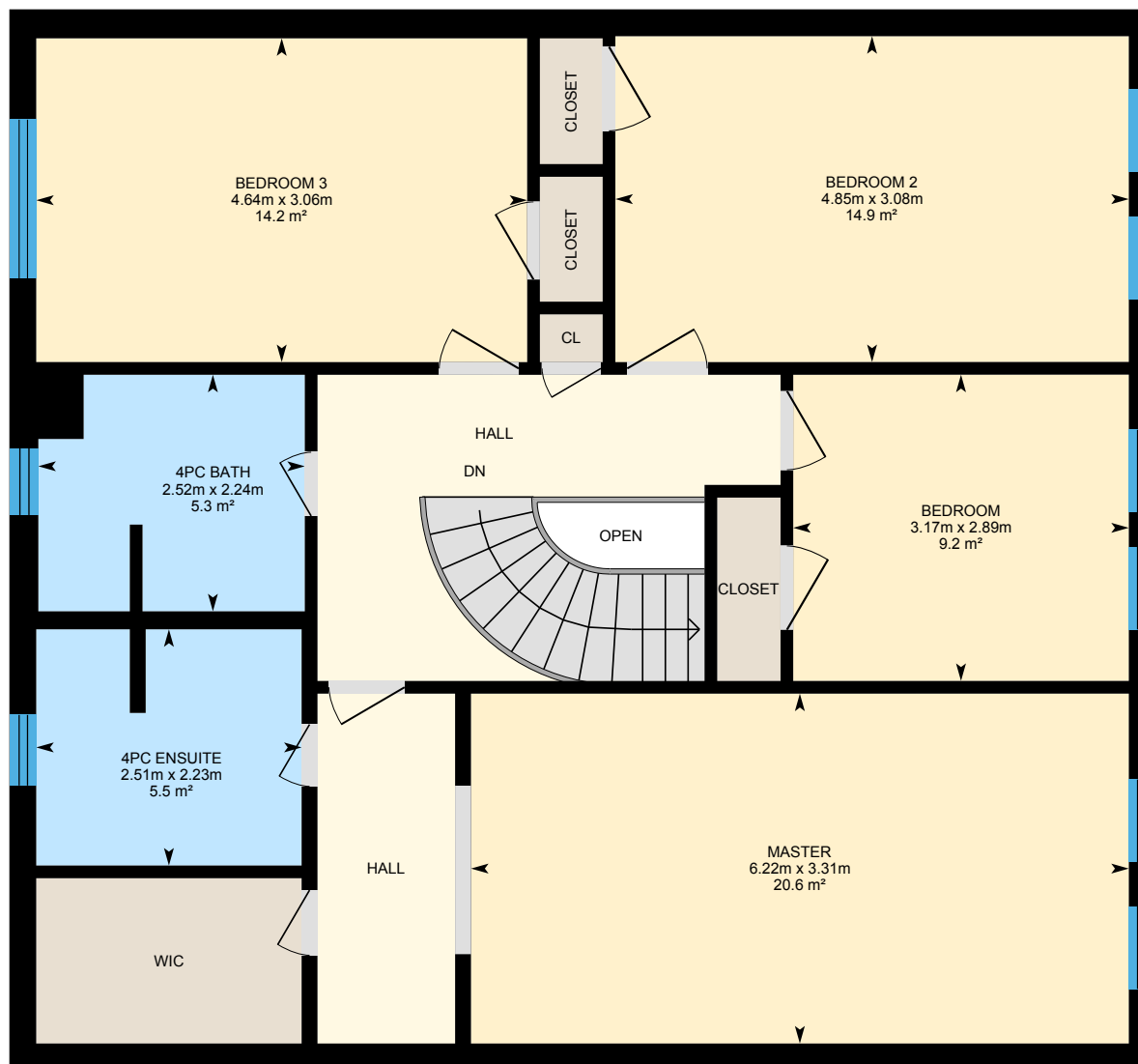
PREPARED: Apr, 2019



White regions are excluded from total floor area. All room dimensions and floor areas must be considered approximate and are subject to independent verification. For method of measurement please see <https://youriguide.com/measure/>.

4 Epping Ct, Markham, ON

2nd Floor Total Exterior Area 107.6 m²
Total Interior Area 97.3 m²



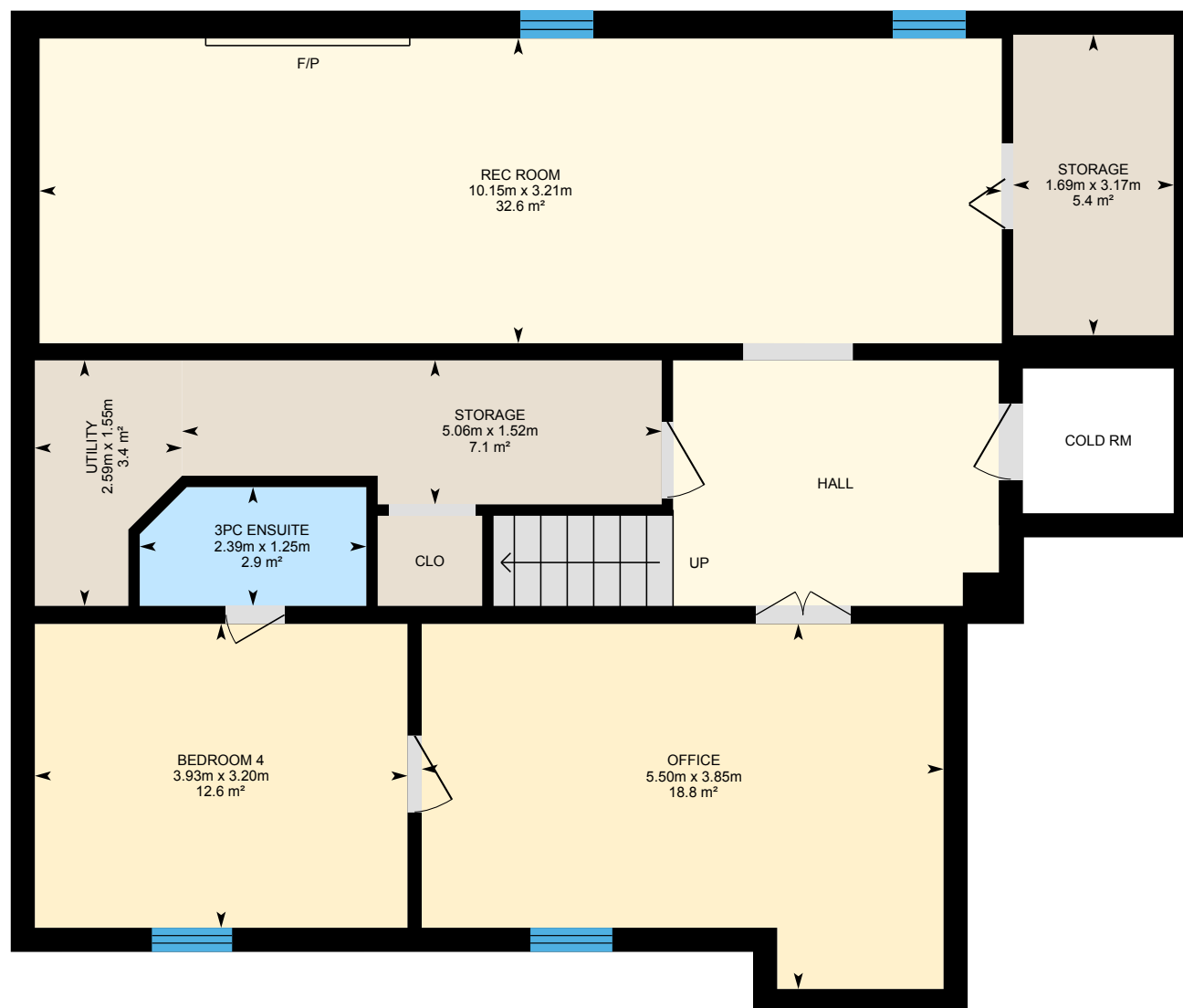
PREPARED: Apr, 2019



White regions are excluded from total floor area. All room dimensions and floor areas must be considered approximate and are subject to independent verification. For method of measurement please see <https://youriguide.com/measure/>.

4 Epping Ct, Markham, ON

Lower level Total Exterior Area 111.6 m²
Total Interior Area 100.1 m²



0 1 2 m

PREPARED: Apr, 2019



White regions are excluded from total floor area. All room dimensions and floor areas must be considered approximate and are subject to independent verification. For method of measurement please see <https://youriguide.com/measure/>.

4 Epping Ct, Markham, ON

Property Details

Room Measurements

Only major rooms are listed. Some listed rooms may be excluded from total interior floor area (e.g. garage). Room dimensions are largest length and width; parts of room may be smaller. Room area is not always equal to product of length and width.

Main Building

MAIN FLOOR

2pc Bath: 1.49m x 1.34m | 2.0 m²
Breakfast: 2.71m x 3.49m | 9.3 m²
Dining: 3.31m x 4.08m | 13.5 m²
Family: 3.31m x 5.95m | 19.7 m²
Kitchen: 3.37m x 3.49m | 11.7 m²
Laundry: 2.42m x 2.40m | 5.8 m²
Living: 3.31m x 5.79m | 19.2 m²

2ND FLOOR

4pc Bath: 2.24m x 2.52m | 5.3 m²
4pc Ensuite: 2.23m x 2.51m | 5.5 m²
Bedroom: 2.89m x 3.17m | 9.2 m²
Bedroom 2: 3.08m x 4.85m | 14.9 m²
Bedroom 3: 3.06m x 4.64m | 14.2 m²
Master: 3.31m x 6.22m | 20.6 m²

LOWER LEVEL

3pc Ensuite: 1.25m x 2.39m | 2.9 m²
Bedroom 4: 3.20m x 3.93m | 12.6 m²
Office: 3.85m x 5.50m | 18.8 m²
Rec Room: 3.21m x 10.15m | 32.6 m²
Storage: 1.52m x 5.06m | 7.1 m²
Storage: 3.17m x 1.69m | 5.4 m²
Utility: 2.59m x 1.55m | 3.4 m²

Floor Area Information

For explanation of floor area calculations and method of measurement please see <https://youriguide.com/measure/>.

Main Building

MAIN FLOOR

Interior Area: 104.8 m²
Perimeter Wall Length: 45.1 m
Perimeter Wall Thickness: 25 cm
Exterior Area: 116.3 m²

2ND FLOOR

Interior Area: 97.3 m²
Perimeter Wall Length: 40.7 m
Perimeter Wall Thickness: 25 cm
Exterior Area: 107.6 m²

LOWER LEVEL (Below Grade)

Interior Area: 100.1 m²
Perimeter Wall Length: 45.1 m
Perimeter Wall Thickness: 25 cm
Exterior Area: 111.6 m²

Total Above Grade Floor Area

Main Building Interior: 202.1 m²
Main Building Exterior: 223.9 m²