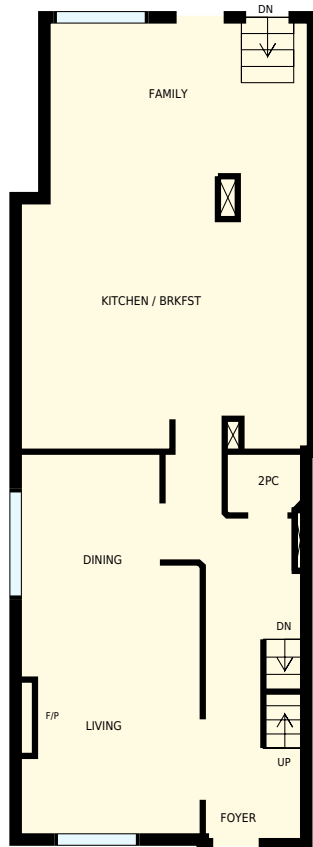




523 Main St, Toronto, ON

Total Exterior Area Above Grade 216 m²

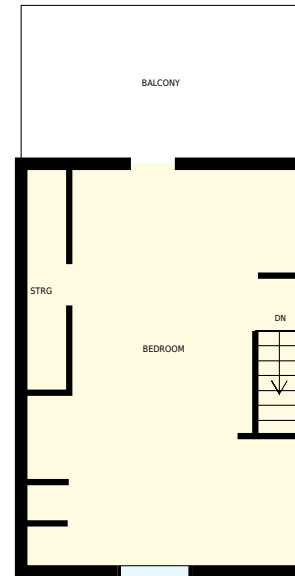


0 1 2
meters

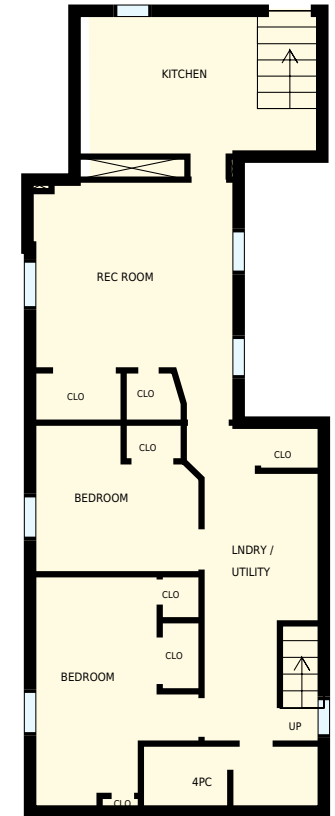
Main floor
Exterior Area 97 m²



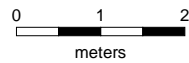
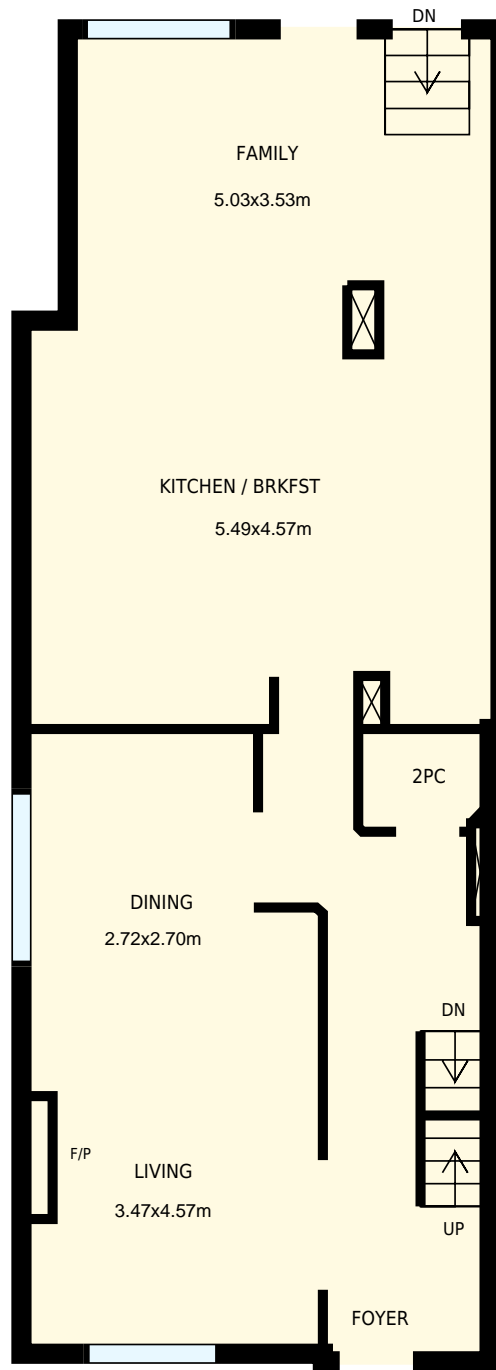
2nd floor
Exterior Area 71 m²



3rd floor
Exterior Area 48 m²



Basement




523 Main St, Toronto, ON

PREPARED FOR:

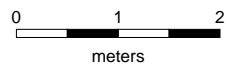
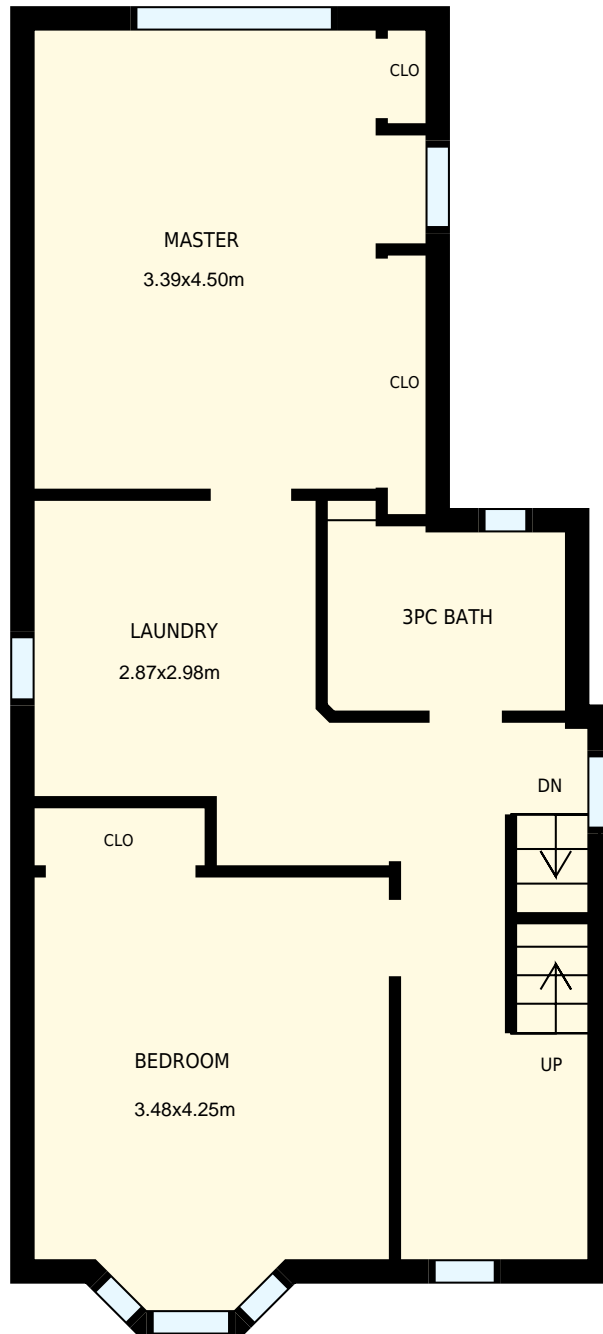
Main floor

Interior Area 86 m²
Exterior Area 97 m²

 Included Area

PREPARED ON:
Jul, 2016

All rooms dimensions and floor areas must be considered approximate and are subject to independent verification. For method of measurement please see <http://youriguide.com/measure/>.




523 Main St, Toronto, ON

PREPARED FOR:

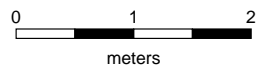
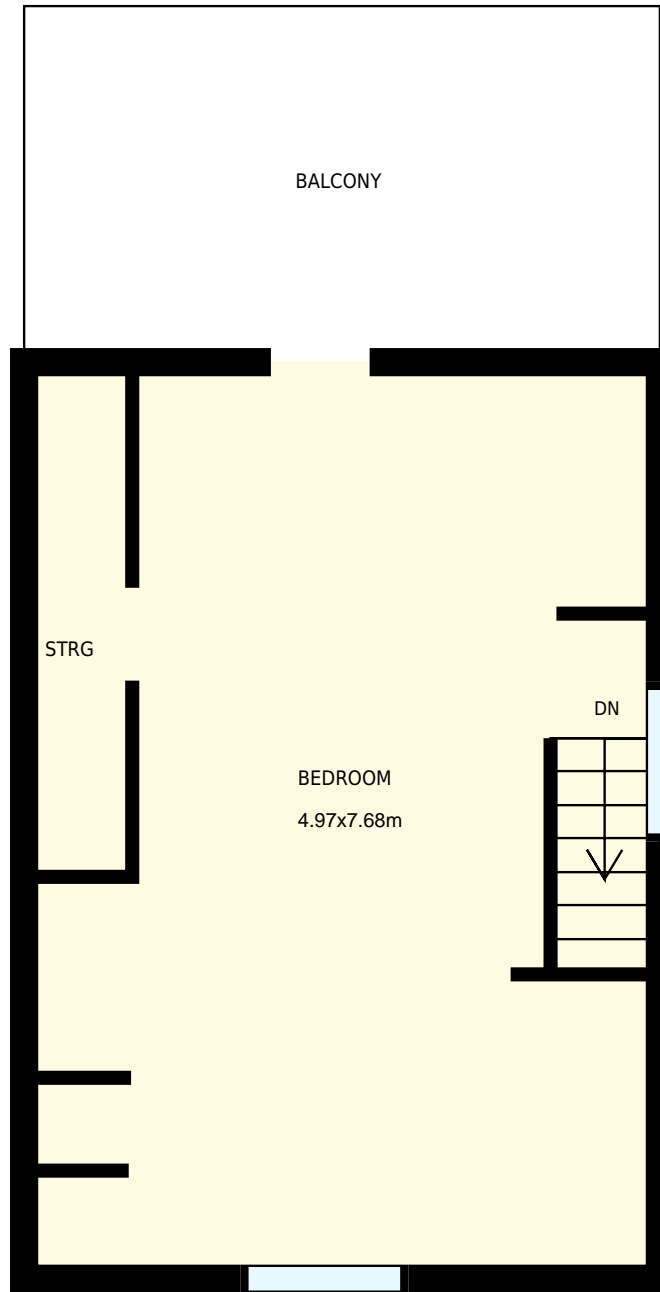
2nd floor

Interior Area 61 m²
Exterior Area 71 m²

 Included Area

PREPARED ON:
Jul, 2016

All rooms dimensions and floor areas must be considered approximate and are subject to independent verification. For method of measurement please see <http://youriguide.com/measure/>.




523 Main St, Toronto, ON

PREPARED FOR:

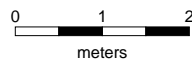
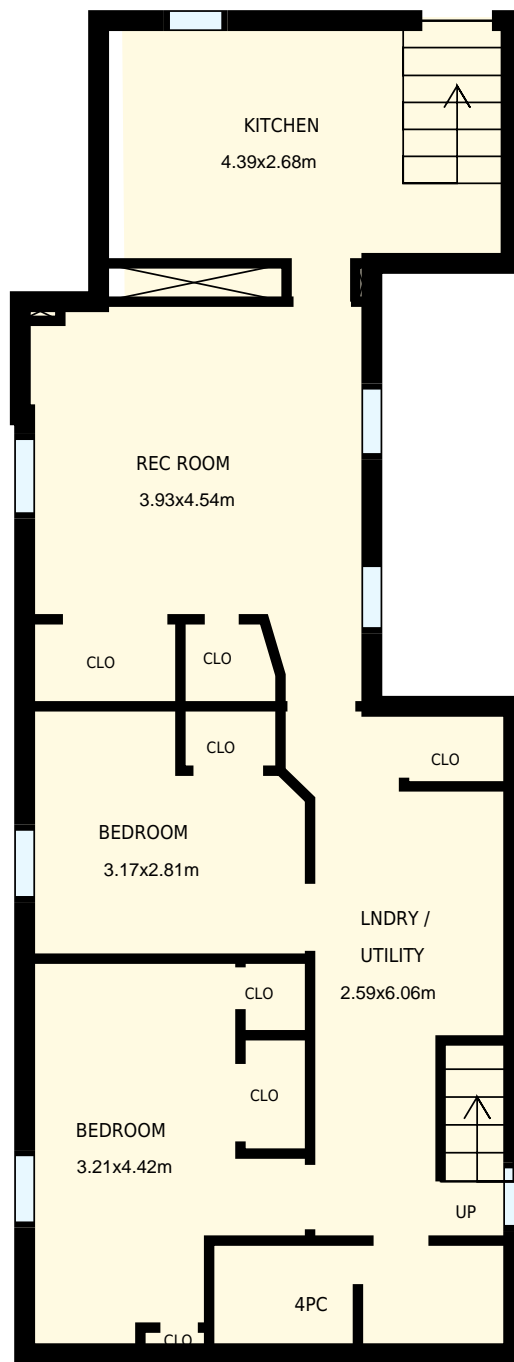
3rd floor

Interior Area 41 m²
Exterior Area 48 m²

 Included Area

PREPARED ON:
Jul, 2016

All rooms dimensions and floor areas must be considered approximate and are subject to independent verification. For method of measurement please see <http://youriguide.com/measure/>.




523 Main St, Toronto, ON

PREPARED FOR:

Basement

Interior Area 72 m²
Exterior Area

 Included Area

PREPARED ON:
Jul, 2016

All rooms dimensions and floor areas must be considered approximate and are subject to independent verification. For method of measurement please see <http://youriguide.com/measure/>.