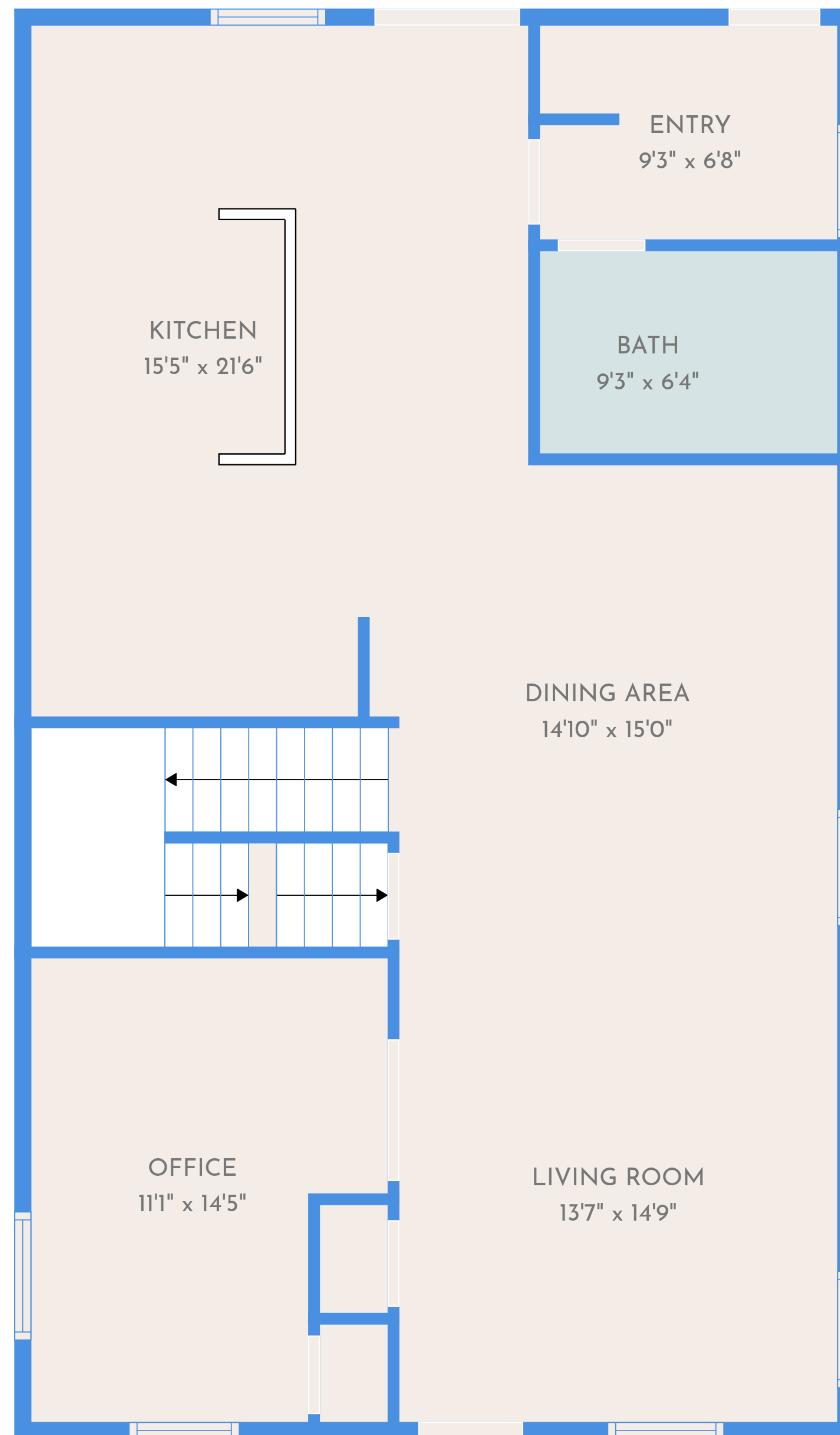


TOTAL: 2170 sq. ft

BELOW GROUND: 0 sq. ft, FLOOR 2: 1085 sq. ft, FLOOR 3: 1085 sq. ft

EXCLUDED AREAS: BASEMENT: 1094 sq. ft, WALLS: 207 sq. ft

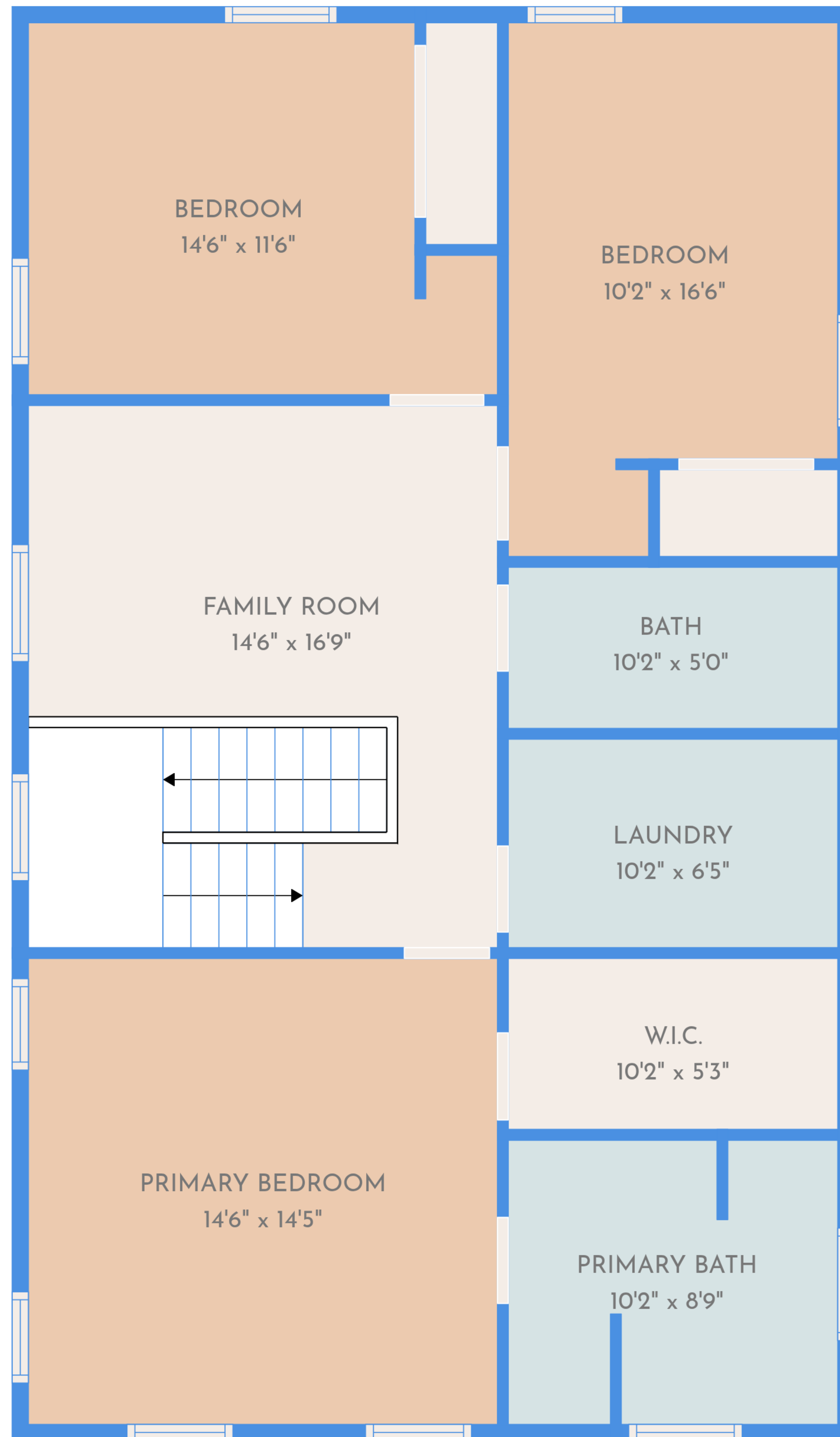
SIZES AND DIMENSIONS ARE APPROXIMATE, ACTUAL MAY VARY.



TOTAL: 2170 sq. ft

BELOW GROUND: 0 sq. ft, FLOOR 2: 1085 sq. ft, FLOOR 3: 1085 sq. ft
EXCLUDED AREAS: BASEMENT: 1094 sq. ft, WALLS: 207 sq. ft

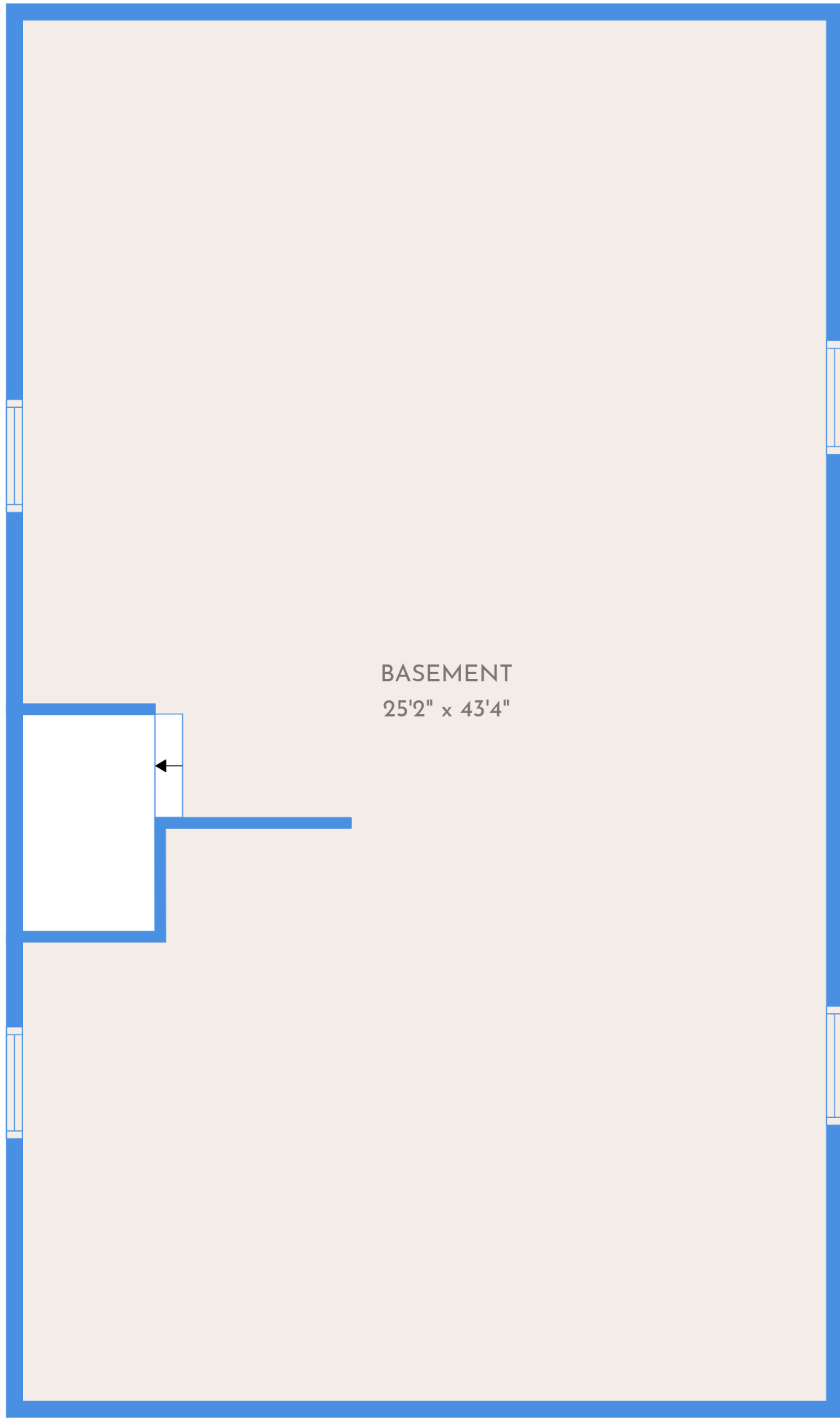
SIZES AND DIMENSIONS ARE APPROXIMATE, ACTUAL MAY VARY.



TOTAL: 2170 sq. ft

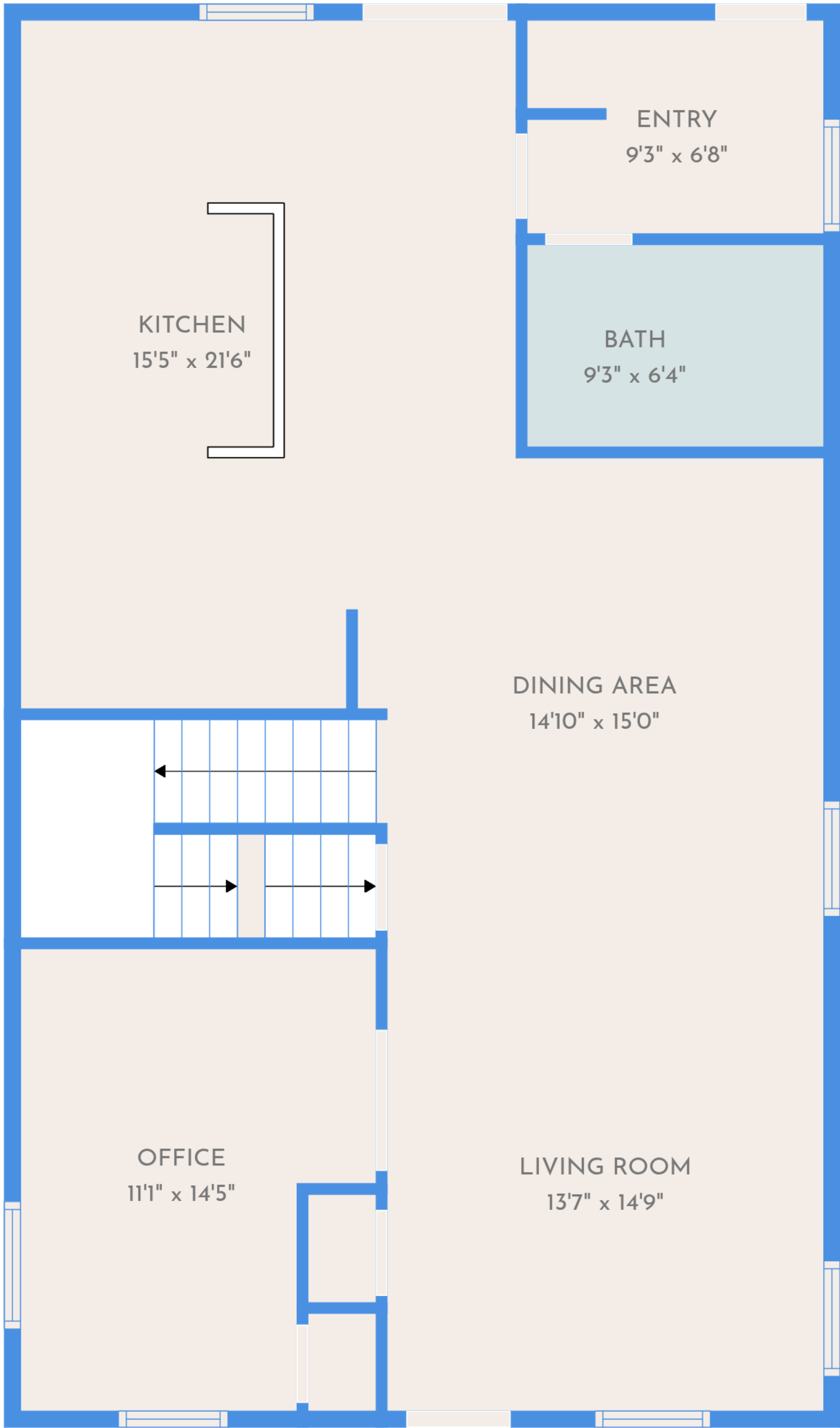
BELOW GROUND: 0 sq. ft, FLOOR 2: 1085 sq. ft, FLOOR 3: 1085 sq. ft
EXCLUDED AREAS: BASEMENT: 1094 sq. ft, WALLS: 207 sq. ft

SIZES AND DIMENSIONS ARE APPROXIMATE, ACTUAL MAY VARY.



BASEMENT
25'2" x 43'4"

FLOOR 1



KITCHEN
15'5" x 21'6"

ENTRY
9'3" x 6'8"

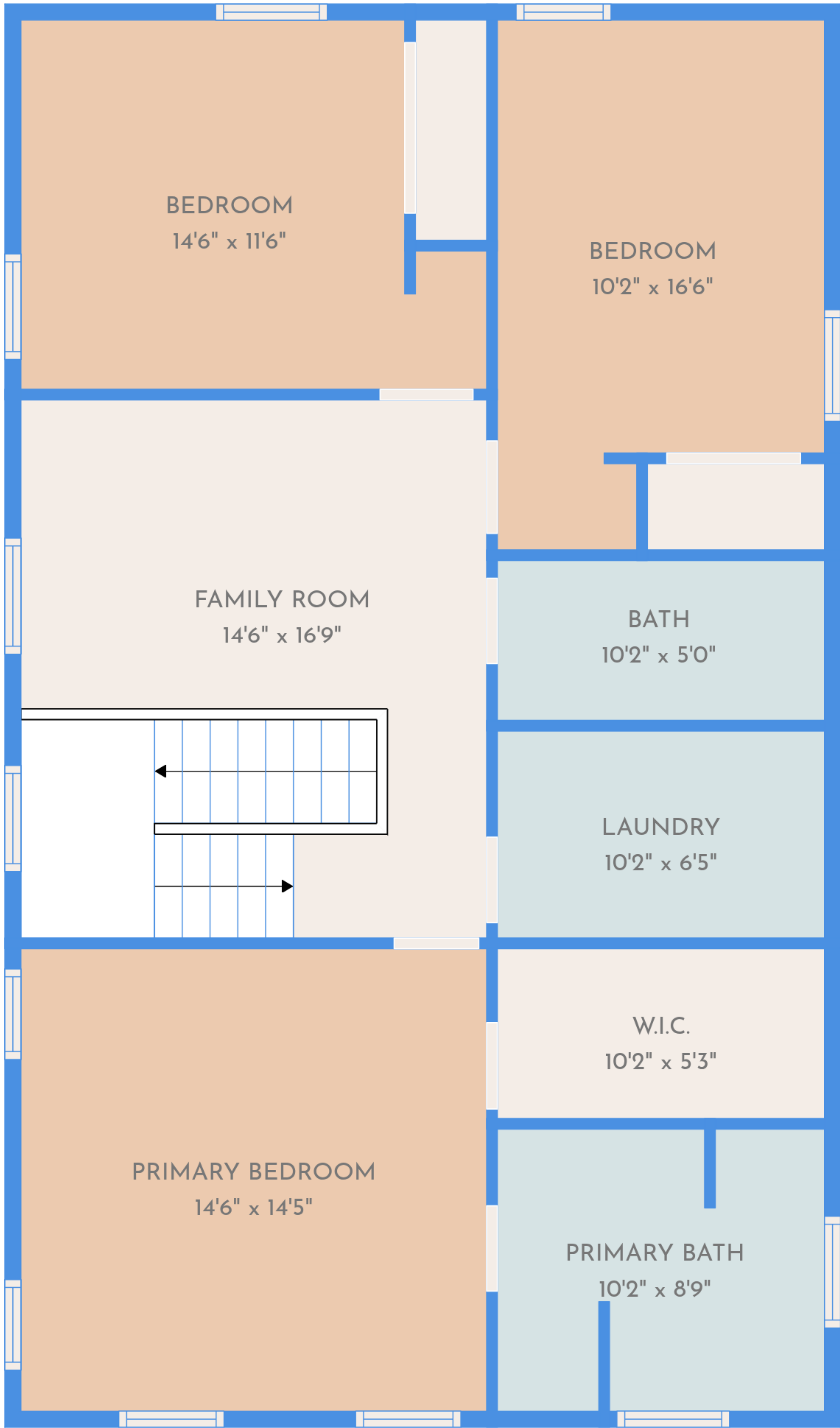
BATH
9'3" x 6'4"

DINING AREA
14'10" x 15'0"

OFFICE
11'1" x 14'5"

LIVING ROOM
13'7" x 14'9"

FLOOR 2



BEDROOM
14'6" x 11'6"

BEDROOM
10'2" x 16'6"

FAMILY ROOM
14'6" x 16'9"

BATH
10'2" x 5'0"

LAUNDRY
10'2" x 6'5"

PRIMARY BEDROOM
14'6" x 14'5"

W.I.C.
10'2" x 5'3"

PRIMARY BATH
10'2" x 8'9"

FLOOR 3



TOTAL: 2170 sq. ft
 BELOW GROUND: 0 sq. ft, FLOOR 2: 1085 sq. ft, FLOOR 3: 1085 sq. ft
 EXCLUDED AREAS: BASEMENT: 1094 sq. ft, WALLS: 207 sq. ft

SIZES AND DIMENSIONS ARE APPROXIMATE, ACTUAL MAY VARY.