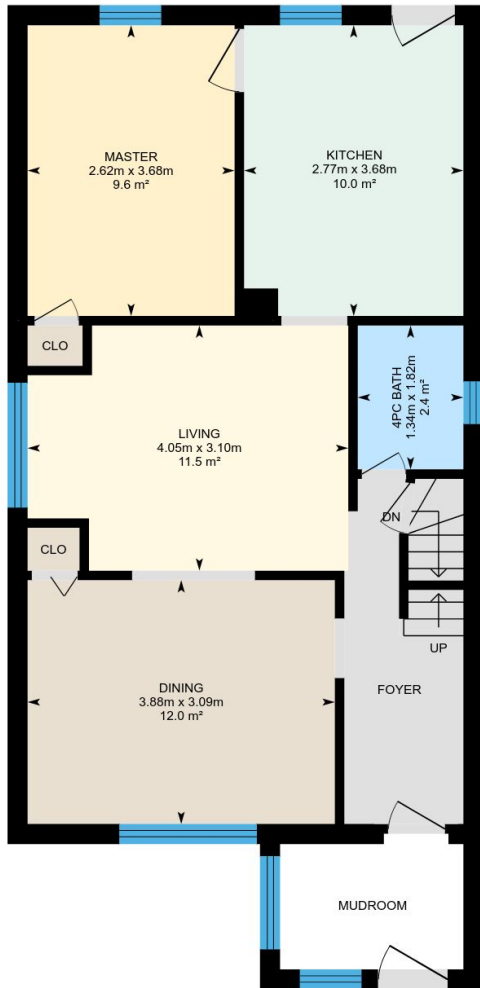
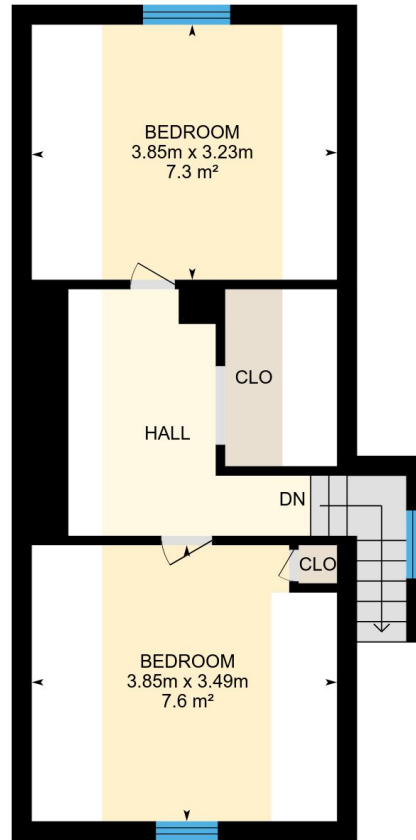


# 91 Frater Ave, Toronto, ON

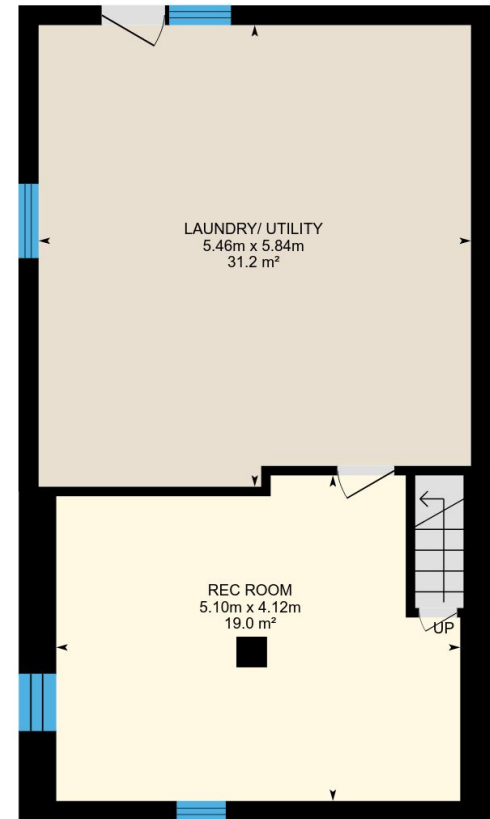
Main Building: Total Exterior Area Above Grade 99.6 m<sup>2</sup>



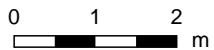
**Main Floor**  
Exterior Area 63.9 m<sup>2</sup>



**2nd Floor**  
Exterior Area 35.7 m<sup>2</sup>



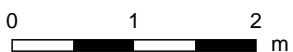
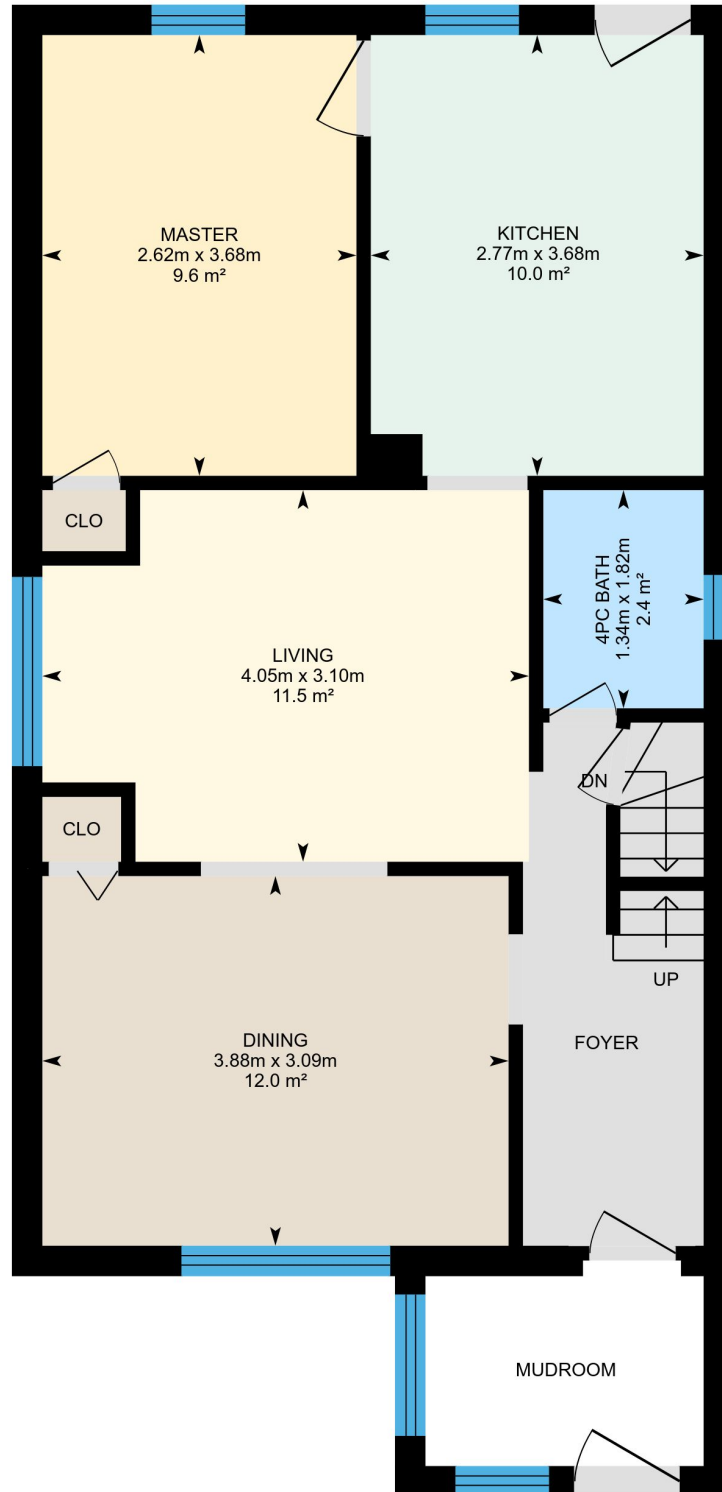
**Basement (Below Grade)**  
Exterior Area 60.1 m<sup>2</sup>



PREPARED: Jul, 2018

# 91 Frater Ave, Toronto, ON

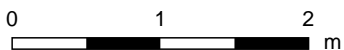
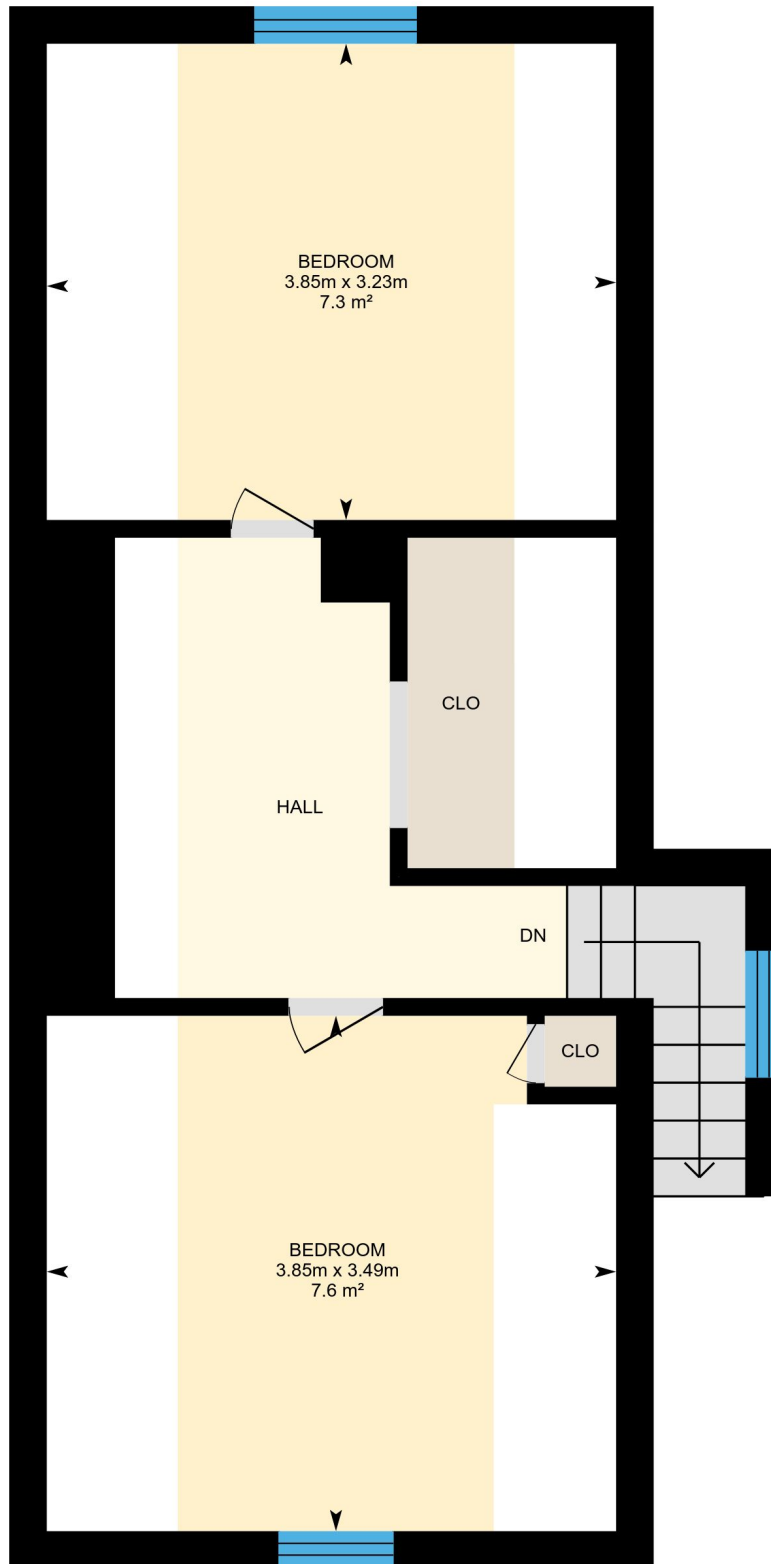
**Main Floor** Total Exterior Area 63.9 m<sup>2</sup>  
Total Interior Area 55.7 m<sup>2</sup>



PREPARED: Jul, 2018

# 91 Frater Ave, Toronto, ON

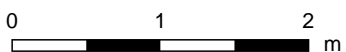
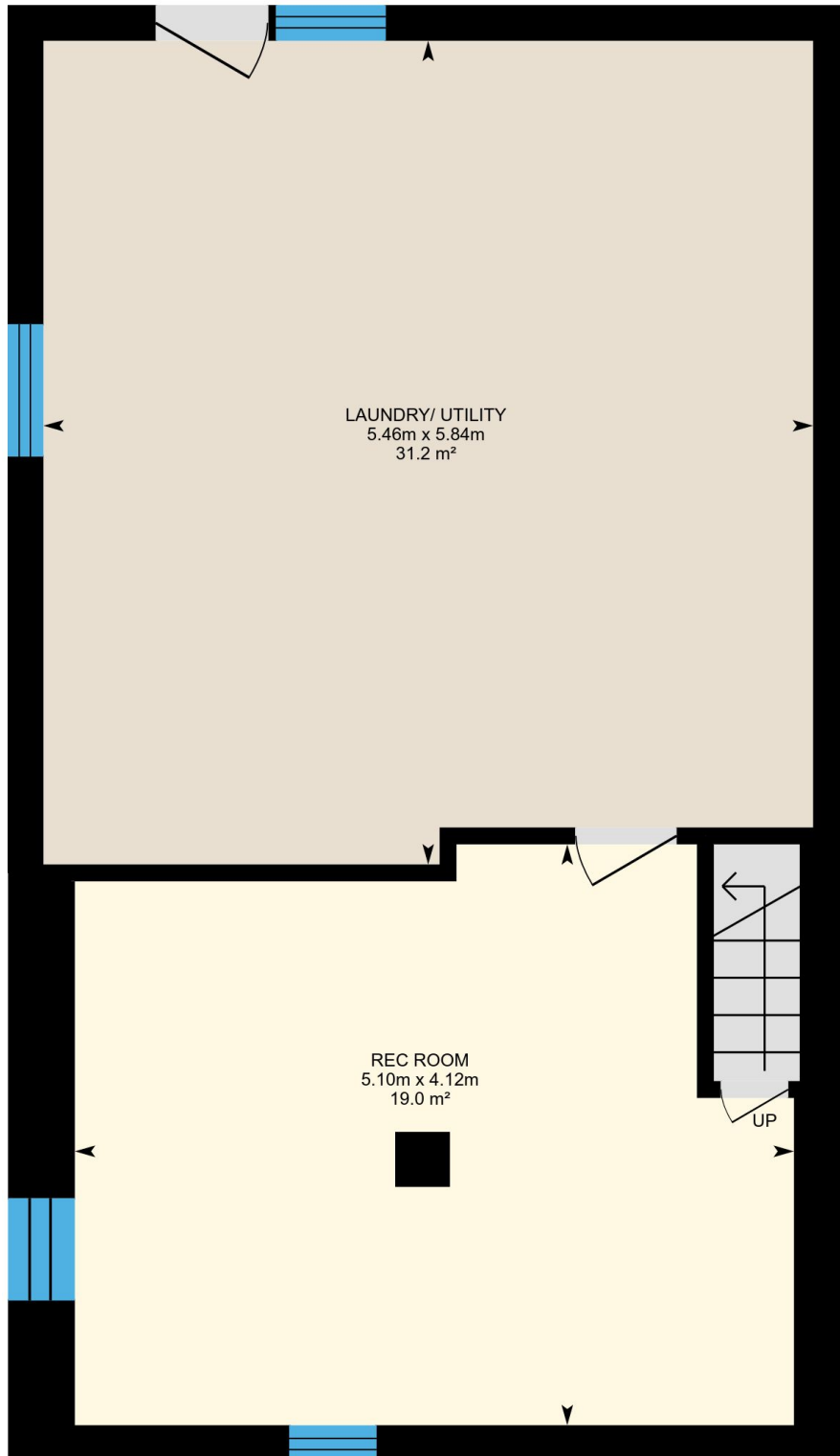
**2nd Floor** Total Exterior Area 35.7 m<sup>2</sup>  
Total Interior Area 26.2 m<sup>2</sup>



PREPARED: Jul, 2018

# 91 Frater Ave, Toronto, ON

**Basement** Total Exterior Area 60.1 m<sup>2</sup>  
Total Interior Area 52.2 m<sup>2</sup>



PREPARED: Jul, 2018

## Property Details

### Room Measurements

Only major rooms are listed. Room dimensions are largest width and length, parts of room may be smaller.  
Room area is interior area and excludes footprint of walls.

### Main Building

#### MAIN FLOOR

Dining: 3.88m x 3.09m | 12.0 m<sup>2</sup>  
4pc Bath: 1.34m x 1.82m | 2.4 m<sup>2</sup>  
Kitchen: 2.77m x 3.68m | 10.0 m<sup>2</sup>  
Master: 2.62m x 3.68m | 9.6 m<sup>2</sup>  
Living: 4.05m x 3.10m | 11.5 m<sup>2</sup>

#### 2ND FLOOR

Bedroom: 3.85m x 3.49m | 7.6 m<sup>2</sup>  
Bedroom: 3.85m x 3.23m | 7.3 m<sup>2</sup>

#### BASEMENT

Rec Room: 5.10m x 4.12m | 19.0 m<sup>2</sup>  
Laundry/ Utility: 5.46m x 5.84m | 31.2 m<sup>2</sup>

### Floor Area Information

For explanation of floor area calculations and method of measurement please see <http://youriguide.com/measure/>

### Main Building

#### MAIN FLOOR

Interior Area: 55.7 m<sup>2</sup>  
Perimeter Wall Length: 32.4 m  
Perimeter Wall Thickness: 25 cm  
Exterior Area: 63.9 m<sup>2</sup>

#### 2ND FLOOR

Interior Area: 26.2 m<sup>2</sup>  
Perimeter Wall Length: 37.4 m  
Perimeter Wall Thickness: 25 cm  
Exterior Area: 35.7 m<sup>2</sup>

#### BASEMENT (Below Grade)

Interior Area: 52.2 m<sup>2</sup>  
Perimeter Wall Length: 31.6 m  
Perimeter Wall Thickness: 25 cm  
Exterior Area: 60.1 m<sup>2</sup>

### Total Above Grade Floor Area

Main Building Interior: 81.9 m<sup>2</sup>  
**Main Building Exterior: 99.6 m<sup>2</sup>**