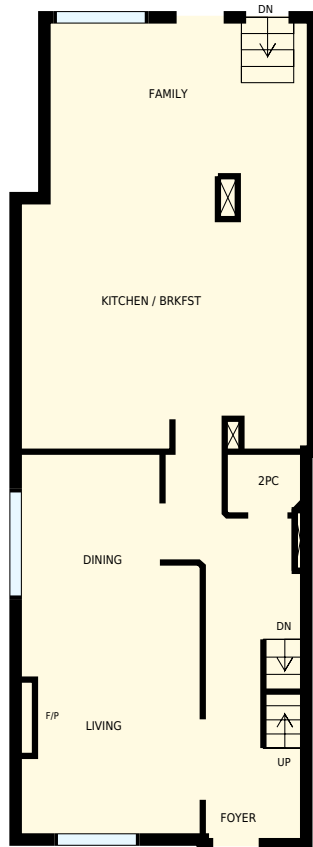




523 Main St, Toronto, ON

Total Exterior Area Above Grade 2323 sq. ft



0 3 6
feet

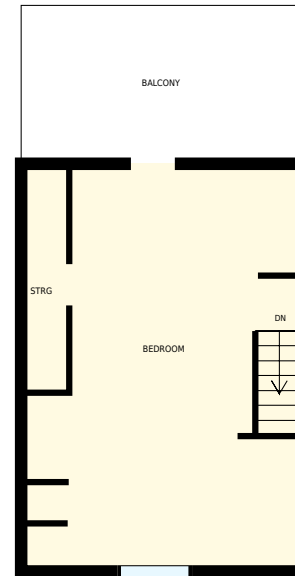
Main floor

Exterior Area 1043 sq. ft



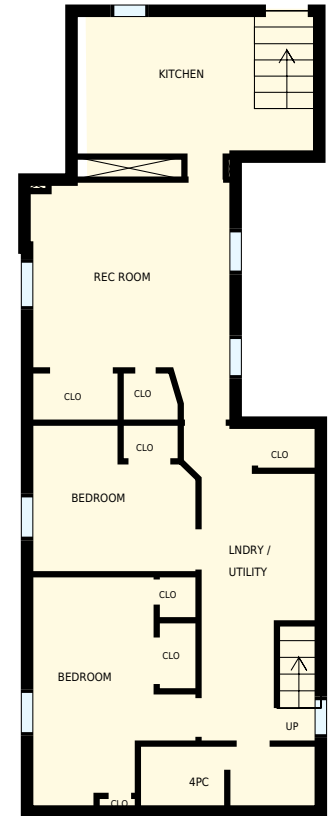
2nd floor

Exterior Area 763 sq. ft



3rd floor

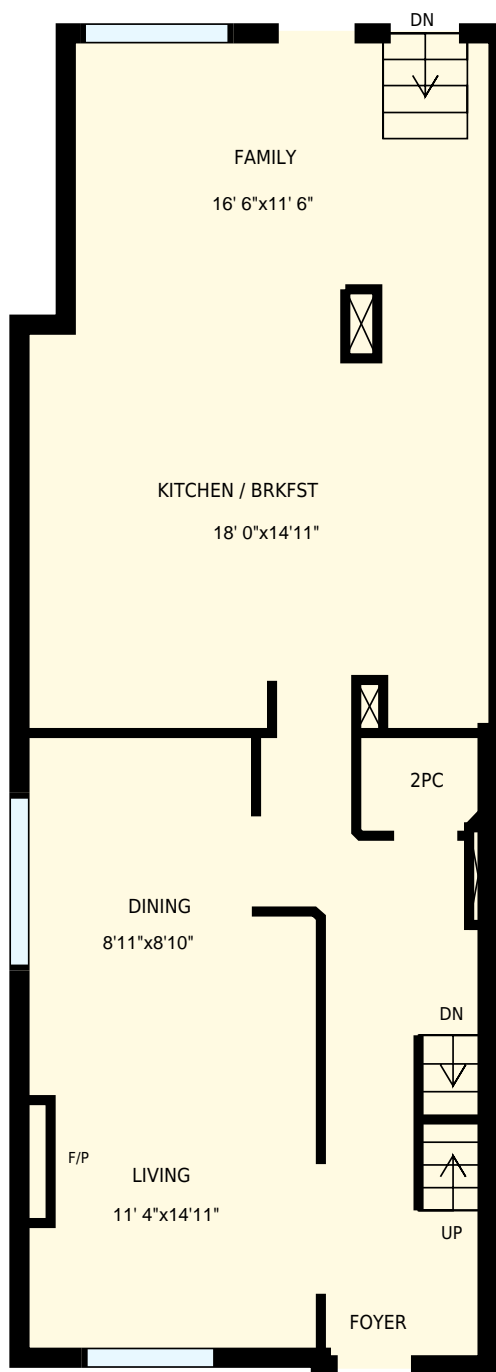
Exterior Area 516 sq. ft



Basement

All rooms dimensions and floor areas must be considered approximate and are subject to independent verification. For method of measurement please see <http://youriguide.com/measure/>.

PREPARED FOR:



523 Main St, Toronto, ON

PREPARED FOR:

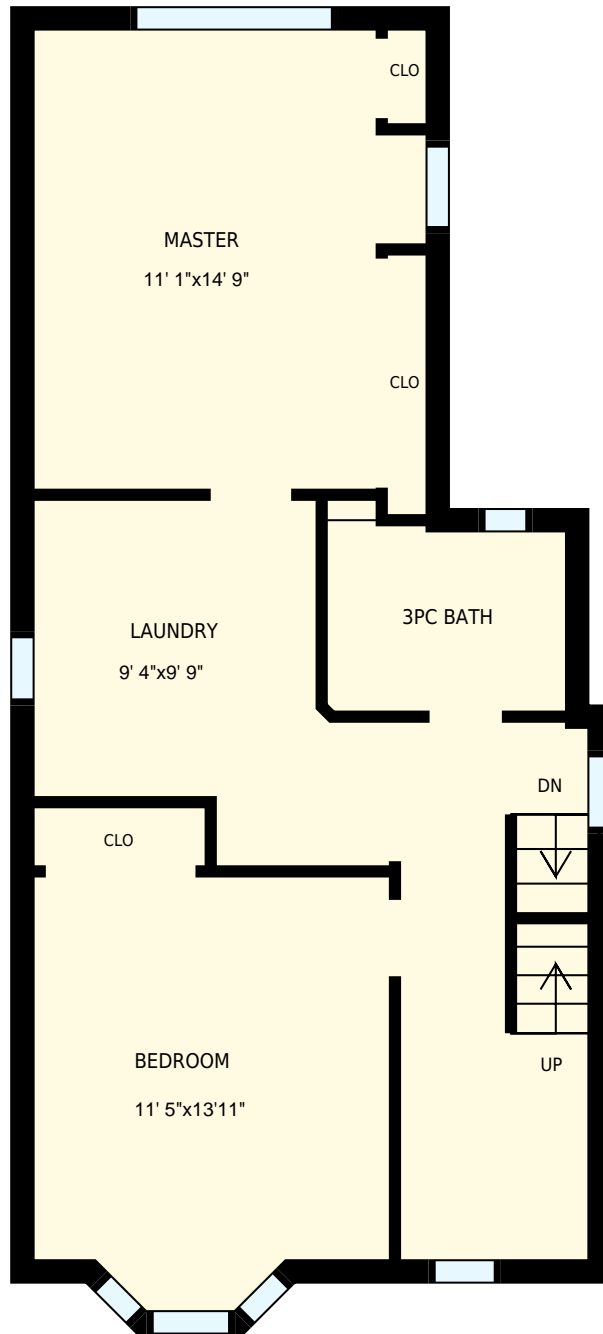
Main floor

Interior Area 919 sq. ft
Exterior Area 1043 sq. ft

 Included Area

PREPARED ON:
Jul, 2016

All rooms dimensions and floor areas must be considered approximate and are subject to independent verification. For method of measurement please see <http://youriguide.com/measure/>.

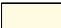


523 Main St, Toronto, ON

PREPARED FOR:

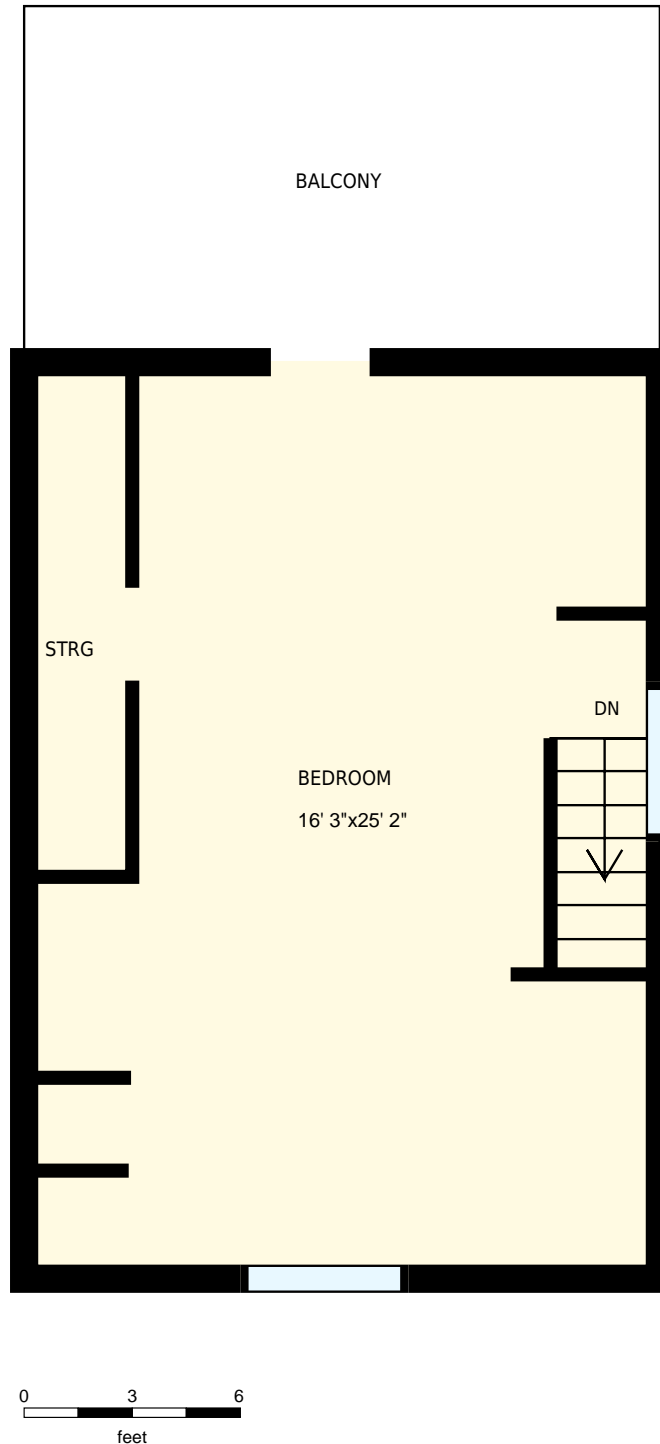
2nd floor

Interior Area 658 sq. ft
Exterior Area 763 sq. ft

 Included Area

PREPARED ON:
Jul, 2016

All rooms dimensions and floor areas must be considered approximate and are subject to independent verification. For method of measurement please see <http://youriguide.com/measure/>.



523 Main St, Toronto, ON
3rd floor

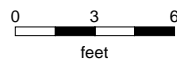
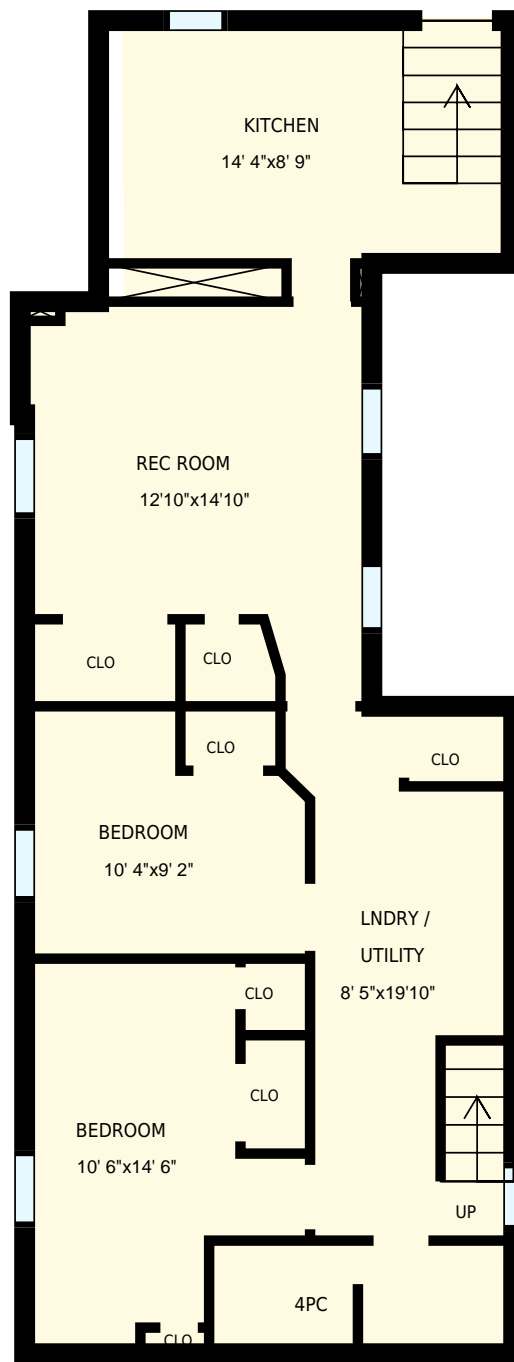
PREPARED FOR:

Interior Area 441 sq. ft
Exterior Area 516 sq. ft

 Included Area

PREPARED ON:
Jul, 2016

All rooms dimensions and floor areas must be considered approximate and are subject to independent verification. For method of measurement please see <http://youriguide.com/measure/>.




523 Main St, Toronto, ON

PREPARED FOR:

Basement

Interior Area 771 sq. ft
Exterior Area

 Included Area

PREPARED ON:
Jul, 2016

All rooms dimensions and floor areas must be considered approximate and are subject to independent verification. For method of measurement please see <http://youriguide.com/measure/>.