

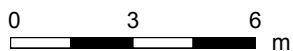
Main Building: Total Exterior Area Above Grade 195.7 m<sup>2</sup>



PREPARED: Sep, 2019

# 7054 County Rd 50, Trent Hills, ON

**Main Floor** Total Exterior Area 195.7 m<sup>2</sup>  
Total Interior Area 178.8 m<sup>2</sup>



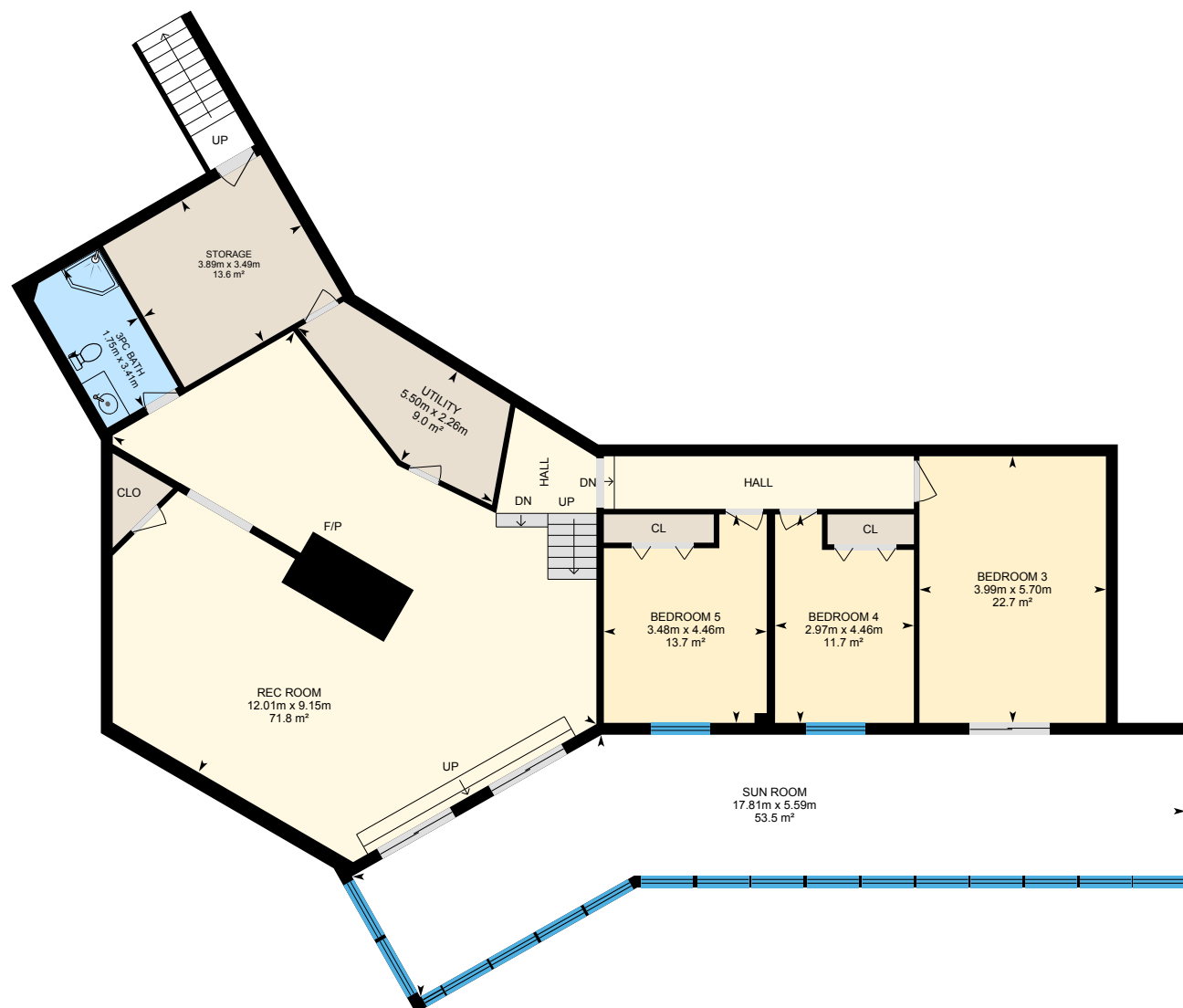
PREPARED: Sep, 2019



White regions are excluded from total floor area. All room dimensions and floor areas must be considered approximate and are subject to independent verification. For method of measurement please see <https://youriguide.com/measure/>.

# 7054 County Rd 50, Trent Hills, ON

Lower Level Total Exterior Area 192.3 m<sup>2</sup>  
Total Interior Area 175.5 m<sup>2</sup>



0 2 4 m

PREPARED: Sep, 2019



# 7054 County Rd 50, Trent Hills, ON

## Property Details

### Room Measurements

Only major rooms are listed. Some listed rooms may be excluded from total interior floor area (e.g. garage). Room dimensions are largest length and width; parts of room may be smaller. Room area is not always equal to product of length and width.

#### Main Building

##### MAIN FLOOR

2pc: 1.06m x 2.38m | 2.5 m<sup>2</sup>  
5pc Ensuite: 3.95m x 3.02m | 10.6 m<sup>2</sup>  
Bedroom 2: 3.95m x 3.30m | 11.4 m<sup>2</sup>  
Dining: 4.79m x 4.03m | 13.5 m<sup>2</sup>  
Garage: 8.32m x 6.94m | 57.7 m<sup>2</sup>  
Kitchen: 4.72m x 8.65m | 31.8 m<sup>2</sup>  
Laundry: 3.53m x 1.97m | 7.0 m<sup>2</sup>  
Living: 6.88m x 10.70m | 45.8 m<sup>2</sup>  
Master: 5.04m x 4.23m | 21.3 m<sup>2</sup>

##### LOWER LEVEL

3pc Bath: 3.41m x 1.75m | 5.9 m<sup>2</sup>  
Bedroom 3: 5.70m x 3.99m | 22.7 m<sup>2</sup>  
Bedroom 4: 4.46m x 2.97m | 11.7 m<sup>2</sup>  
Bedroom 5: 4.46m x 3.48m | 13.7 m<sup>2</sup>  
Rec Room: 9.15m x 12.01m | 71.8 m<sup>2</sup>  
Storage: 3.49m x 3.89m | 13.6 m<sup>2</sup>  
Sun Room: 5.59m x 17.81m | 53.5 m<sup>2</sup>  
Utility: 2.26m x 5.50m | 9.0 m<sup>2</sup>

### Floor Area Information

For explanation of floor area calculations and method of measurement please see <https://youriguide.com/measure/>.

#### Main Building

##### MAIN FLOOR

Interior Area: 178.8 m<sup>2</sup>  
Perimeter Wall Length: 66.4 m  
Perimeter Wall Thickness: 25 cm  
Exterior Area: 195.7 m<sup>2</sup>

##### LOWER LEVEL (Below Grade)

Interior Area: 175.5 m<sup>2</sup>  
Perimeter Wall Length: 66.1 m  
Perimeter Wall Thickness: 25 cm  
Exterior Area: 192.3 m<sup>2</sup>

#### Total Above Grade Floor Area

Main Building Interior: 178.8 m<sup>2</sup>  
**Main Building Exterior: 195.7 m<sup>2</sup>**