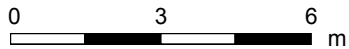
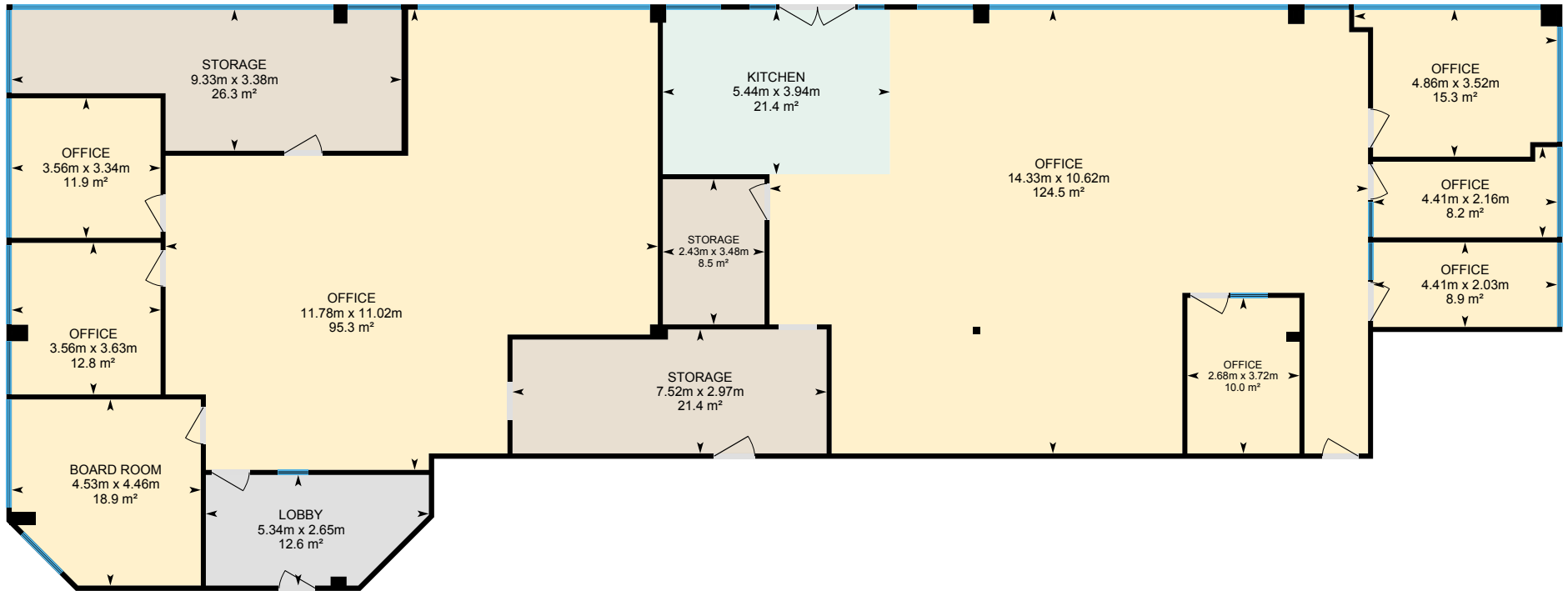


# 1465 Pickering Pkwy, Pickering, ON

Main Floor Total Exterior Area 420.9 m<sup>2</sup>  
Total Interior Area 408.1 m<sup>2</sup>



PREPARED: Oct, 2019



White regions are excluded from total floor area. All room dimensions and floor areas must be considered approximate and are subject to independent verification. For method of measurement please see <https://youriguide.com/measure/>.

# 1465 Pickering Pkwy, Pickering, ON

## Property Details

### Room Measurements

Only major rooms are listed. Some listed rooms may be excluded from total interior floor area (e.g. garage). Room dimensions are largest length and width; parts of room may be smaller. Room area is not always equal to product of length and width.

### Main Building

#### MAIN FLOOR

Board Room: 4.46m x 4.53m | 18.9 m<sup>2</sup>  
Kitchen: 3.94m x 5.44m | 21.4 m<sup>2</sup>  
Lobby: 2.65m x 5.34m | 12.6 m<sup>2</sup>  
Office: 2.03m x 4.41m | 8.9 m<sup>2</sup>  
Office: 3.63m x 3.56m | 12.8 m<sup>2</sup>  
Office: 3.52m x 4.86m | 15.3 m<sup>2</sup>  
Office: 2.16m x 4.41m | 8.2 m<sup>2</sup>  
Office: 3.34m x 3.56m | 11.9 m<sup>2</sup>  
Office: 3.72m x 2.68m | 10.0 m<sup>2</sup>  
Office: 11.02m x 11.78m | 95.3 m<sup>2</sup>  
Office: 10.62m x 14.33m | 124.5 m<sup>2</sup>  
Storage: 3.48m x 2.43m | 8.5 m<sup>2</sup>  
Storage: 2.97m x 7.52m | 21.4 m<sup>2</sup>  
Storage: 3.38m x 9.33m | 26.3 m<sup>2</sup>

### Floor Area Information

For explanation of floor area calculations and method of measurement please see <https://youriguide.com/measure/>.

### Main Building

#### MAIN FLOOR

Interior Area: 408.1 m<sup>2</sup>  
Perimeter Wall Length: 100.1 m  
Perimeter Wall Thickness: 13 cm  
Exterior Area: 420.9 m<sup>2</sup>

### Total Above Grade Floor Area

Main Building Interior: 408.1 m<sup>2</sup>  
**Main Building Exterior: 420.9 m<sup>2</sup>**