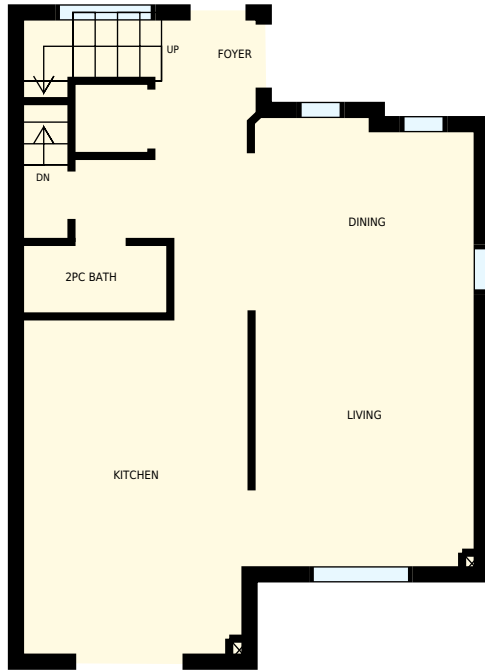


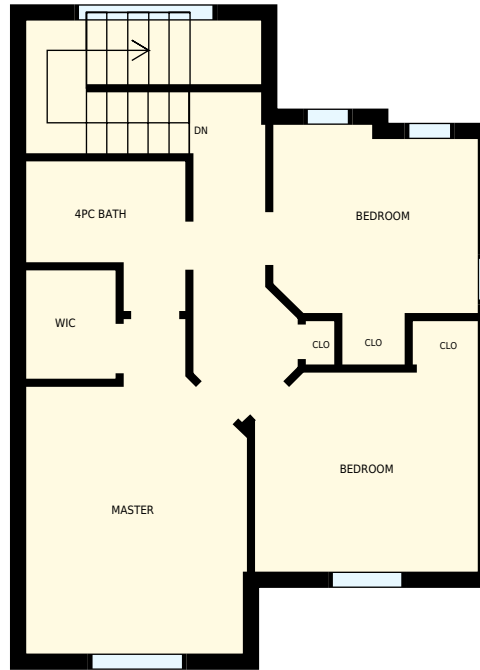
# 1051 Roseheath St, Oshawa, ON

Total Exterior Area Above Grade 1323 sq. ft

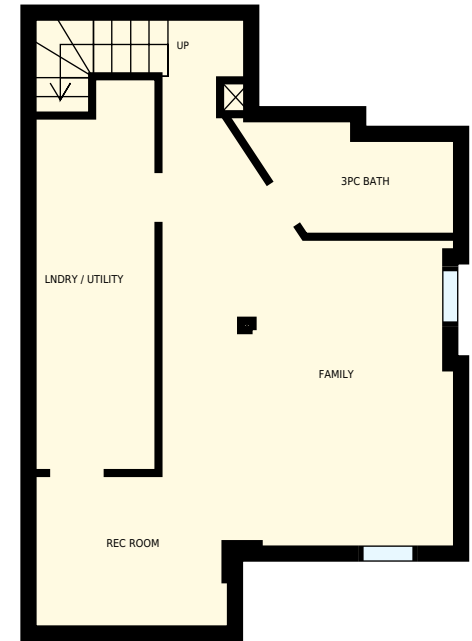


0 3 6  
feet

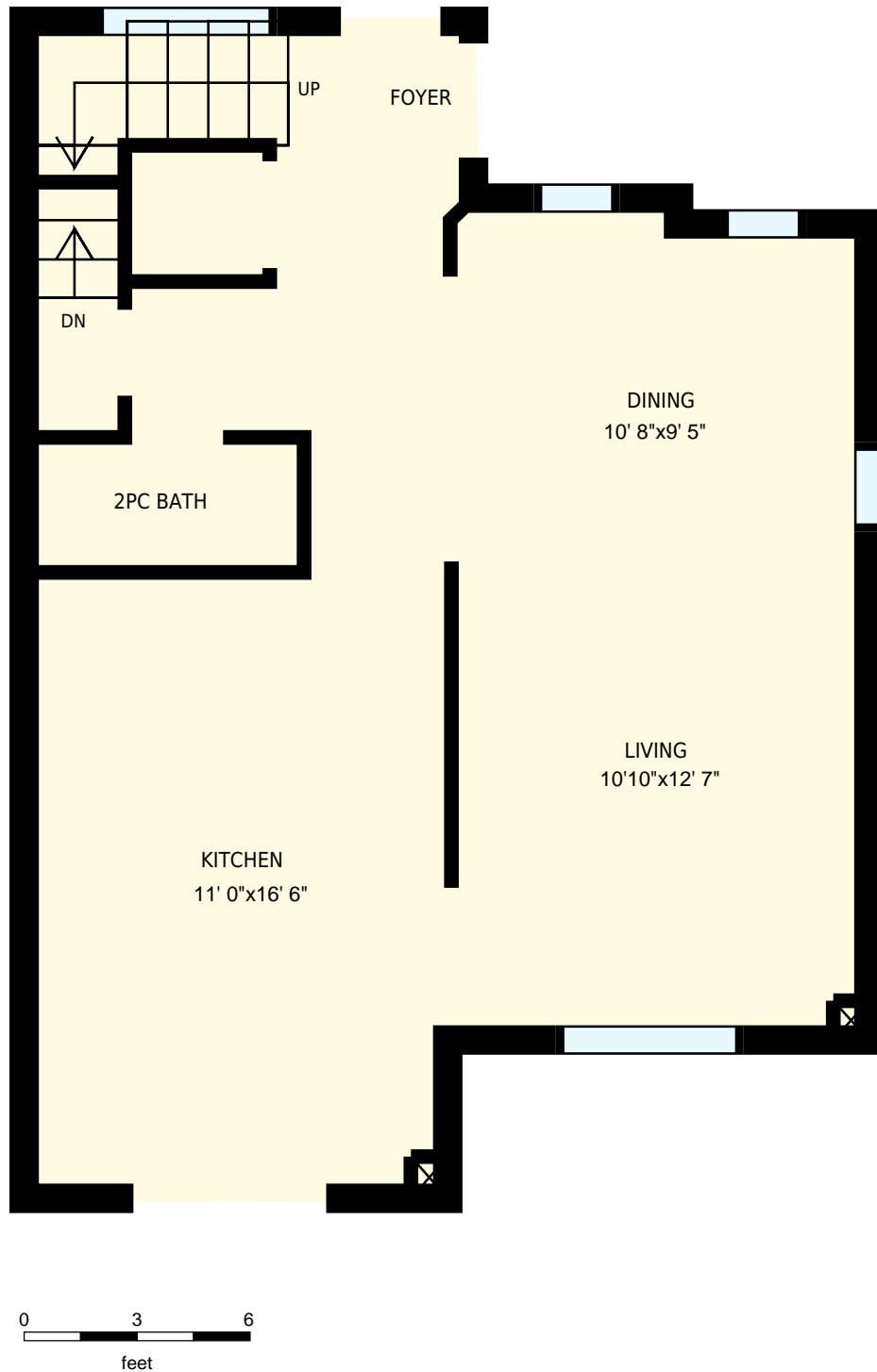
**Main floor**  
Exterior Area 661 sq. ft



**2nd floor**  
Exterior Area 662 sq. ft



**Basement**




1051 Roseheath St, Oshawa, ON

PREPARED FOR:

Main floor

Interior Area 598 sq. ft  
Exterior Area 661 sq. ft

 Included Area

PREPARED ON:  
May, 2016

All rooms dimensions and floor areas must be considered approximate and are subject to independent verification. For method of measurement please see <http://youriguide.com/measure/>.



1051 Roseheath St, Oshawa, ON

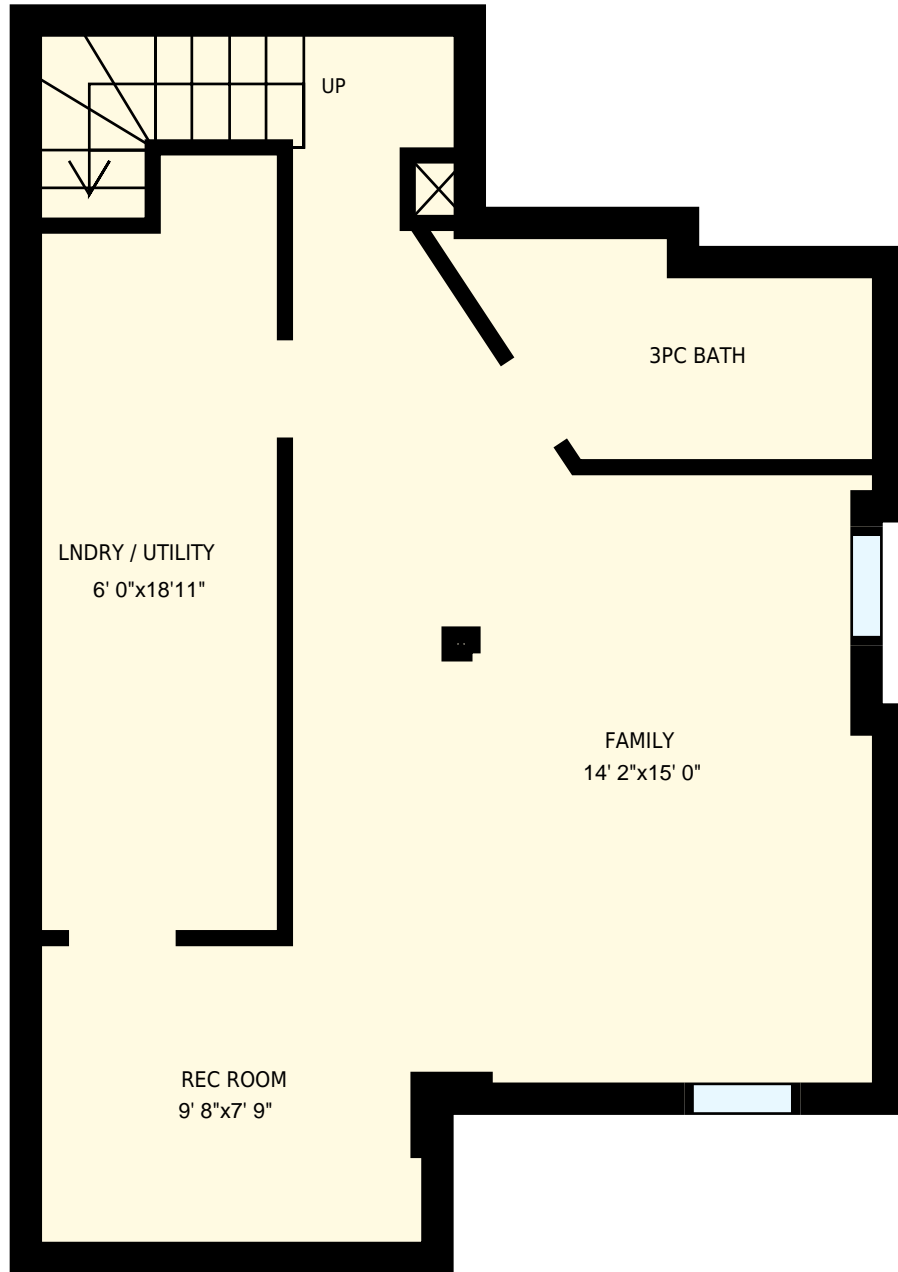
PREPARED FOR:

2nd floor

Interior Area 599 sq. ft  
Exterior Area 662 sq. ft

PREPARED ON:  
May, 2016

All rooms dimensions and floor areas must be considered approximate and are subject to independent verification. For method of measurement please see <http://youriguide.com/measure/>.

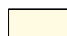


1051 Roseheath St, Oshawa, ON

PREPARED FOR:

Basement

Interior Area 521 sq. ft  
Exterior Area

 Included Area

PREPARED ON:  
May, 2016

All rooms dimensions and floor areas must be considered approximate and are subject to independent verification. For method of measurement please see <http://youriguide.com/measure/>.