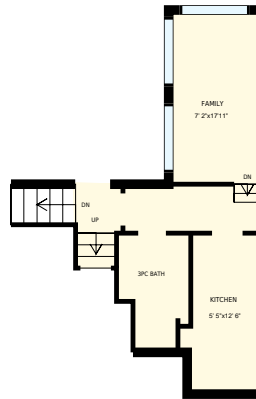


625 Hyacinthe Blvd, Mississauga, ON L5A 2C6

Total Exterior Area Above Grade 1685 sq. ft.



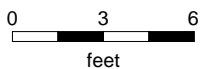
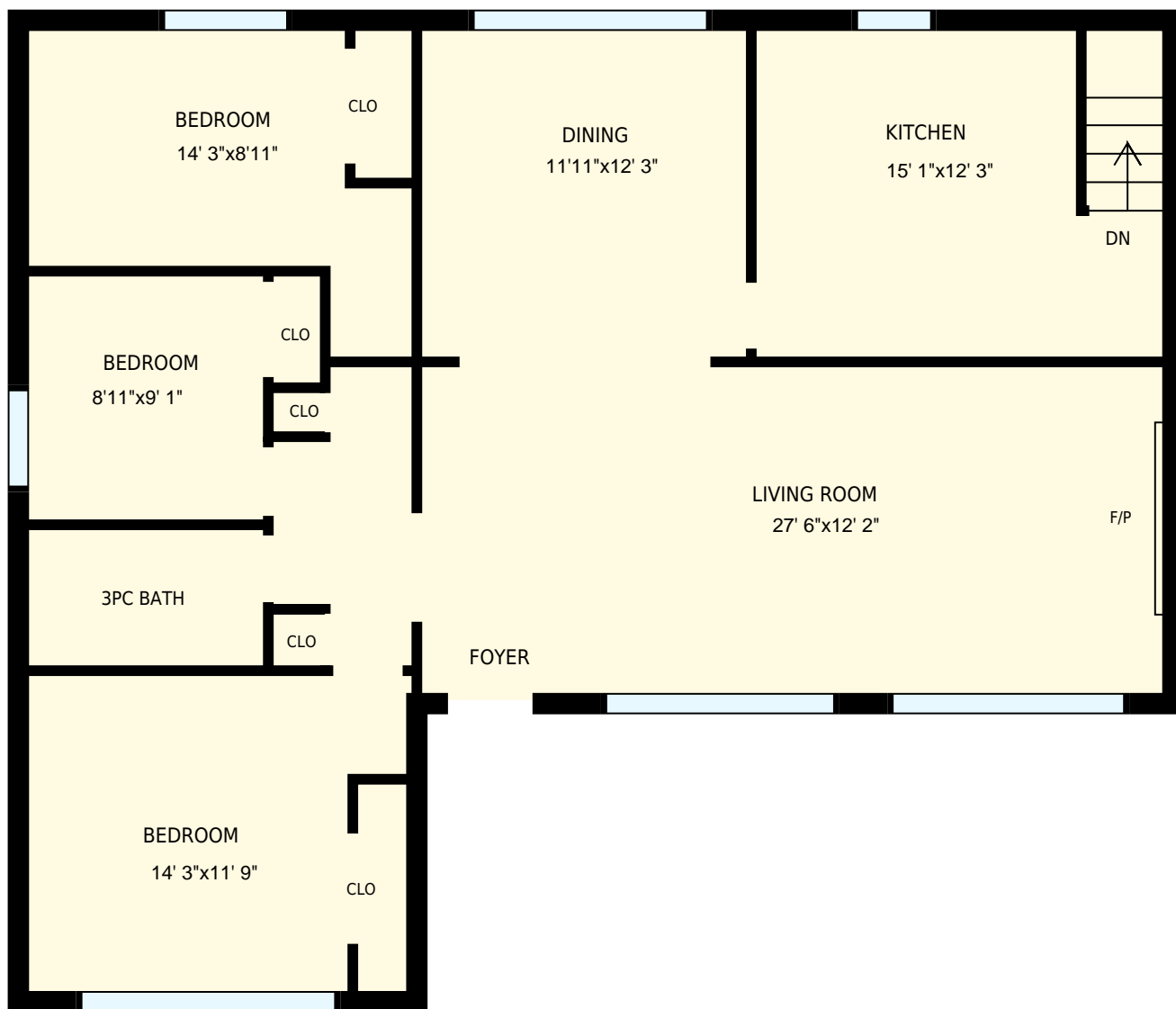
Main floor
Exterior Area 1315 sq. ft.



Lower level
Exterior Area 371 sq. ft.



Basement

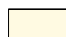


625 Hyacinthe Blvd, Mississauga, ON L5A 2C6

PREPARED FOR:

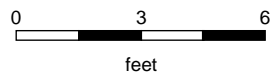
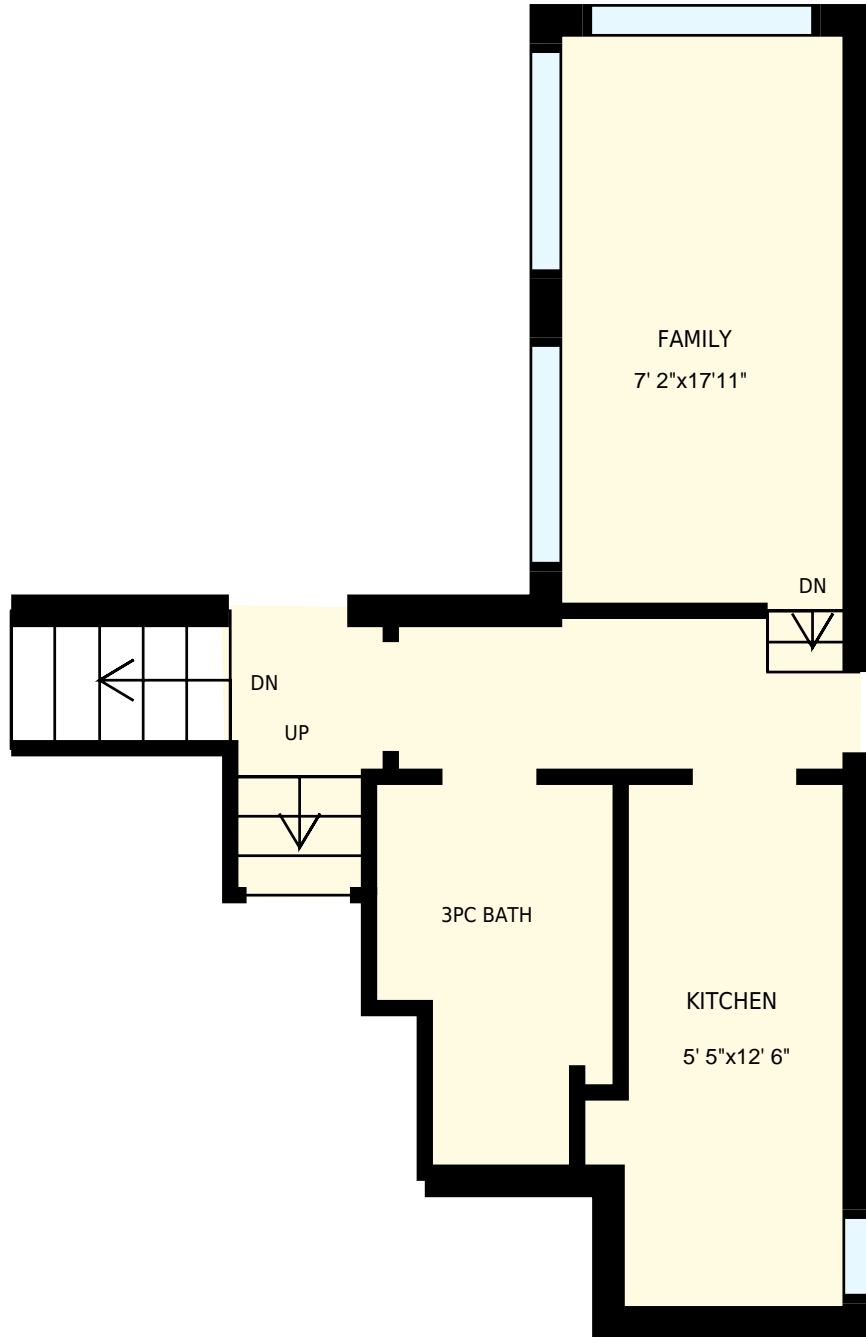
Main floor

Interior Area 1187 sq. ft.
Exterior Area 1315 sq. ft.

 Included Area

PREPARED ON:
Apr, 2017

All room dimensions and floor areas must be considered approximate and are subject to independent verification.
For method of measurement please see <https://youriguide.com/measure/>.

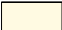


625 Hyacinthe Blvd, Mississauga, ON L5A 2C6

PREPARED FOR:

Lower level

Interior Area 295 sq. ft.
Exterior Area 371 sq. ft.

 Included Area

PREPARED ON:
Apr, 2017

All room dimensions and floor areas must be considered approximate and are subject to independent verification.
For method of measurement please see <https://youriguide.com/measure/>.



625 Hyacinthe Blvd, Mississauga, ON L5A 2C6
Basement

PREPARED FOR:

Interior Area 1251 sq. ft.
Exterior Area

 Included Area

PREPARED ON:
Apr, 2017

All room dimensions and floor areas must be considered approximate and are subject to independent verification.
For method of measurement please see <https://youriguide.com/measure/>.