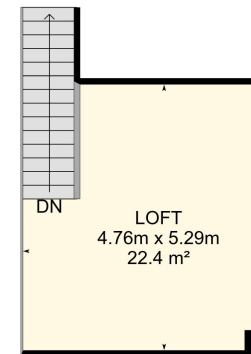
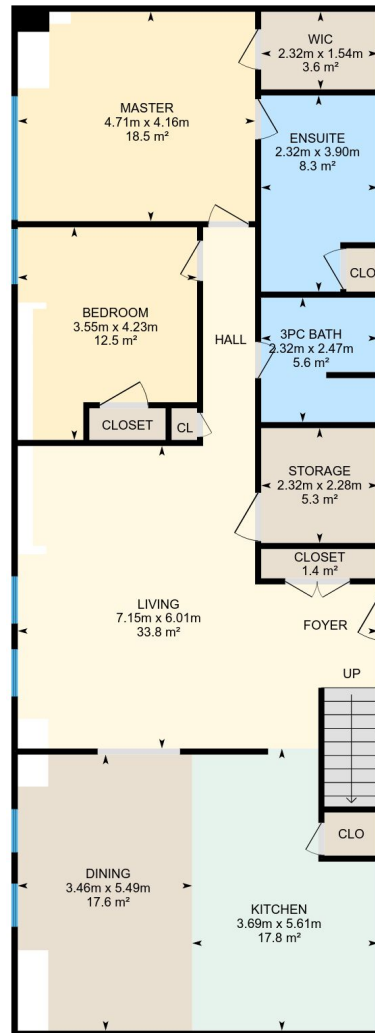


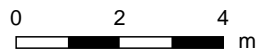
# 72 Pine St N, Port Hope, ON

Main Building: Total Exterior Area Above Grade 177.8 m<sup>2</sup>



**Main Floor**  
Exterior Area 148.2 m<sup>2</sup>

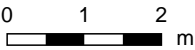
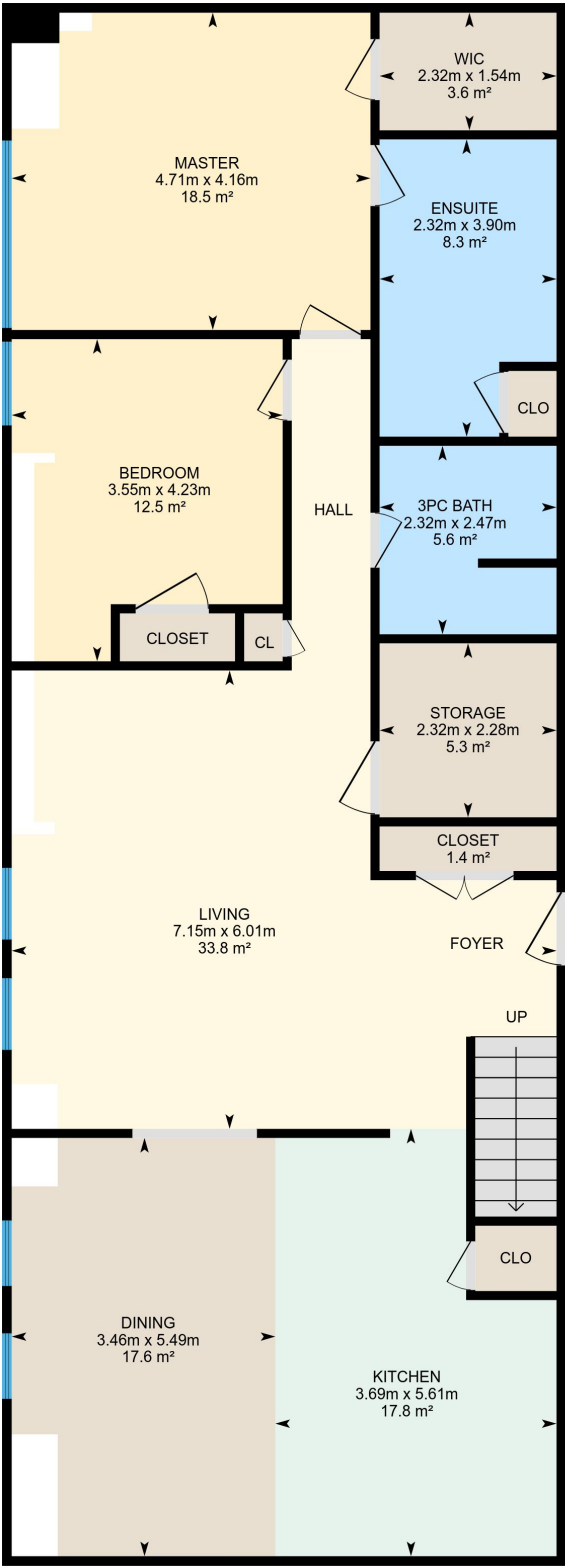
**2nd Floor**  
Exterior Area 29.7 m<sup>2</sup>



PREPARED: Jul, 2018

# 72 Pine St N, Port Hope, ON

**Main Floor**    Total Exterior Area 148.2 m<sup>2</sup>  
Total Interior Area 140.5 m<sup>2</sup>

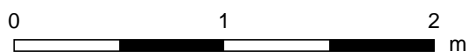
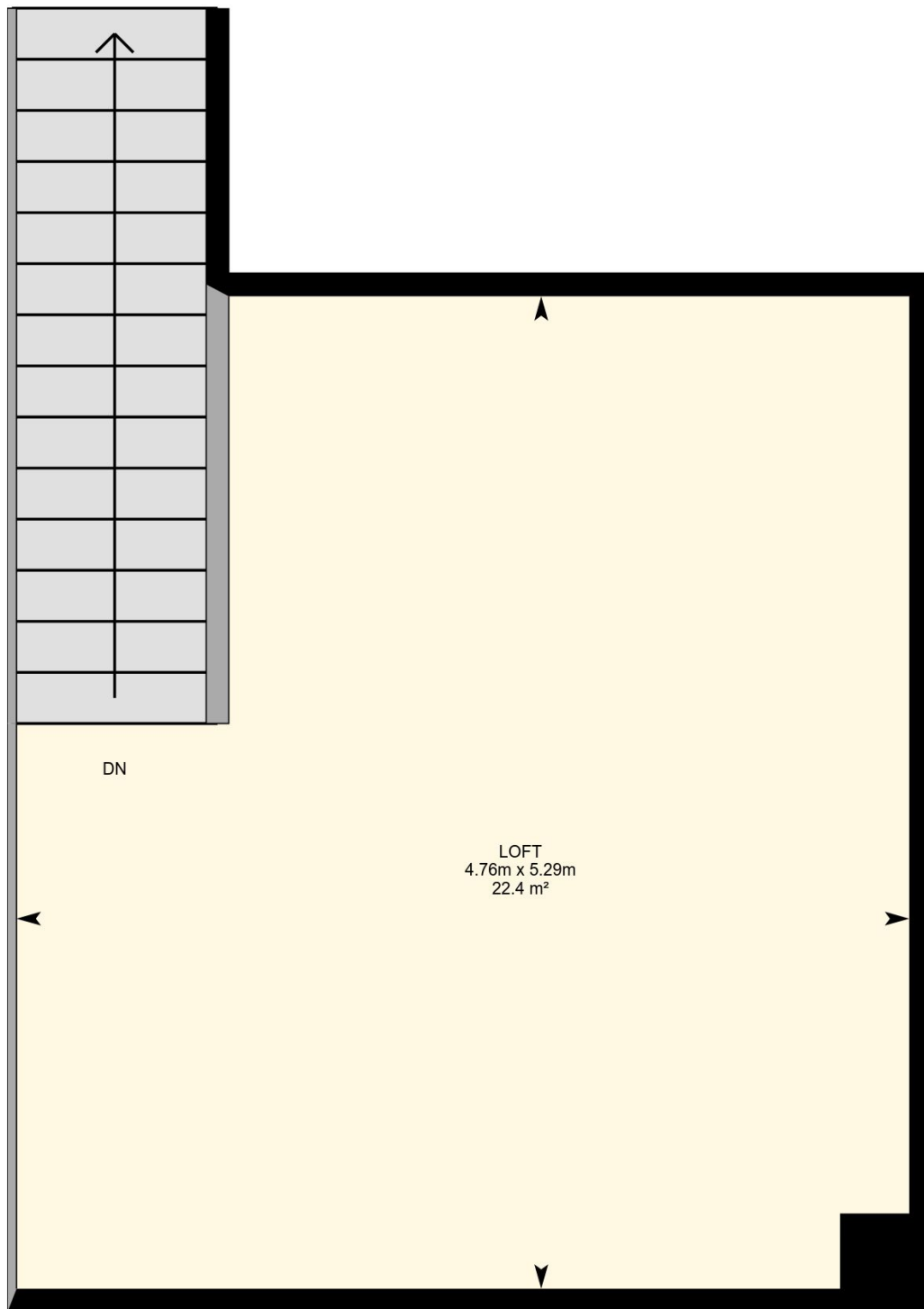


PREPARED: Jul, 2018

Colored regions are included in total floor area. All room dimensions and floor areas must be considered approximate and are subject to independent verification. For method of measurement please see <https://youriguide.com/measure/>.

# 72 Pine St N, Port Hope, ON

**2nd Floor** Total Exterior Area 29.7 m<sup>2</sup>  
Total Interior Area 26.7 m<sup>2</sup>



PREPARED: Jul, 2018

# 72 Pine St N, Port Hope, ON

## Property Details

### Room Measurements

Only major rooms are listed. Room dimensions are largest width and length, parts of room may be smaller.  
Room area is interior area and excludes footprint of walls.

### Main Building

#### MAIN FLOOR

Closet: 1.4 m<sup>2</sup>

Bedroom: 3.55m x 4.23m | 12.5 m<sup>2</sup>

Master: 4.71m x 4.16m | 18.5 m<sup>2</sup>

Ensuite: 2.32m x 3.90m | 8.3 m<sup>2</sup>

Wic: 2.32m x 1.54m | 3.6 m<sup>2</sup>

3pc Bath: 2.32m x 2.47m | 5.6 m<sup>2</sup>

Storage: 2.32m x 2.28m | 5.3 m<sup>2</sup>

Kitchen: 3.69m x 5.61m | 17.8 m<sup>2</sup>

Dining: 3.46m x 5.49m | 17.6 m<sup>2</sup>

Living: 7.15m x 6.01m | 33.8 m<sup>2</sup>

#### 2ND FLOOR

Loft: 4.76m x 5.29m | 22.4 m<sup>2</sup>

### Floor Area Information

For explanation of floor area calculations and method of measurement please see <http://youriguide.com/measure/>

### Main Building

Building Perimeter Wall Thickness: 13 cm

#### MAIN FLOOR

Interior Area: 140.5 m<sup>2</sup>

Perimeter Wall Length: 60.4 m

Exterior Area: 148.2 m<sup>2</sup>

#### 2ND FLOOR

Interior Area: 26.7 m<sup>2</sup>

Perimeter Wall Length: 23.5 m

Exterior Area: 29.7 m<sup>2</sup>

### Total Above Grade Floor Area

Main Building Interior: 167.2 m<sup>2</sup>

**Main Building Exterior: 177.8 m<sup>2</sup>**