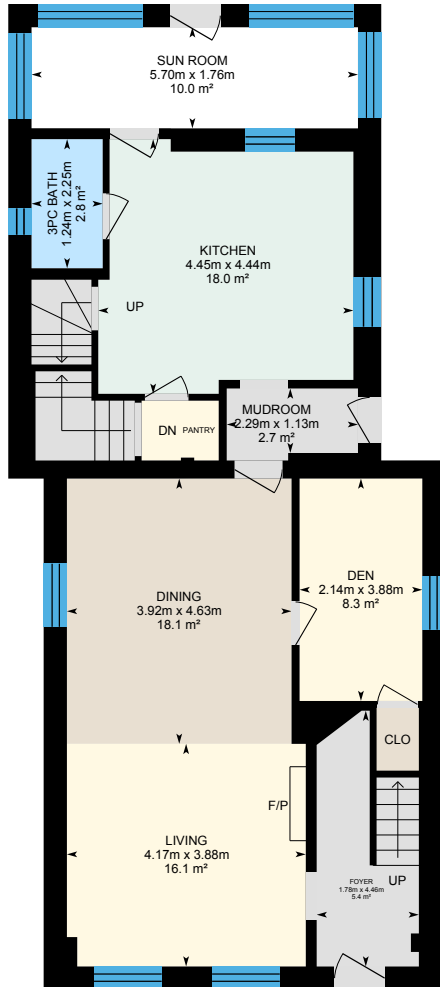
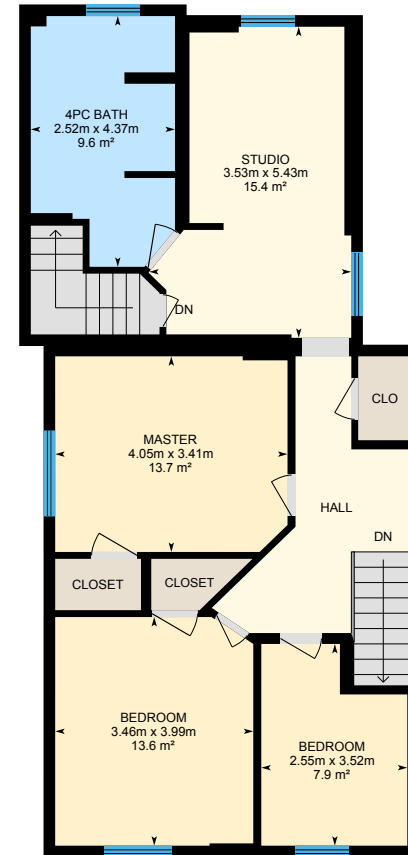


# 78 King St, Prince Edward, ON

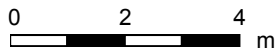
Main Building: Total Exterior Area Above Grade 196.2 m<sup>2</sup>



**Main Floor**  
Exterior Area 102.7 m<sup>2</sup>

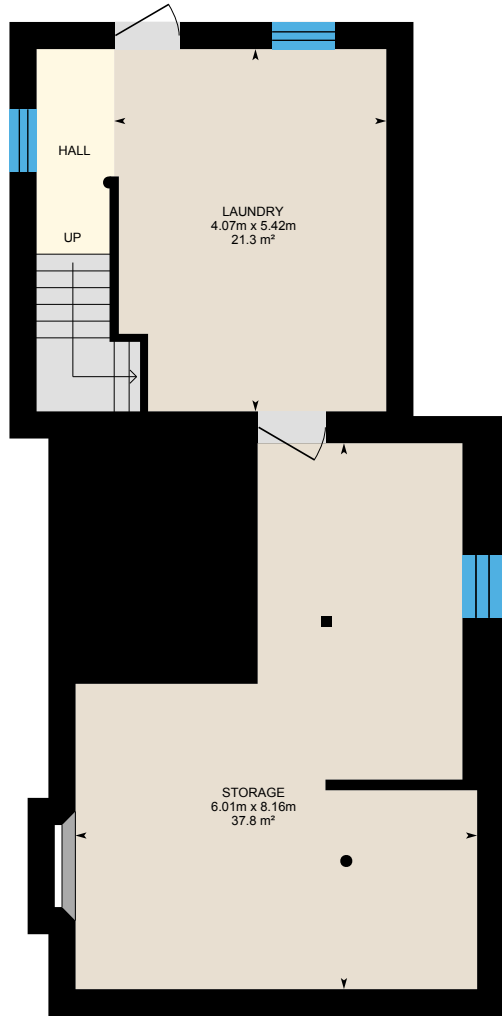


**2nd Floor**  
Exterior Area 93.5 m<sup>2</sup>

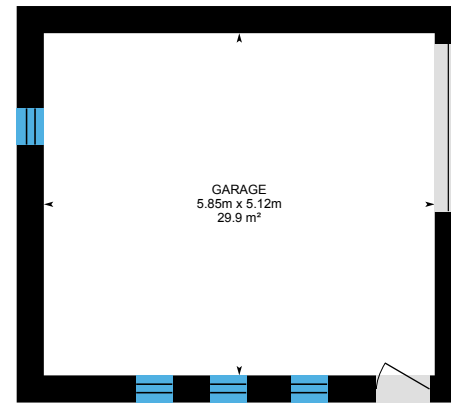


# 78 King St, Prince Edward, ON

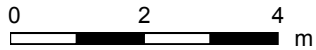
Main Building: Total Exterior Area Above Grade 196.2 m<sup>2</sup>



**Basement (Below Grade)**  
Exterior Area 95.5 m<sup>2</sup>



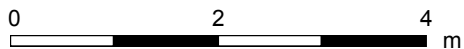
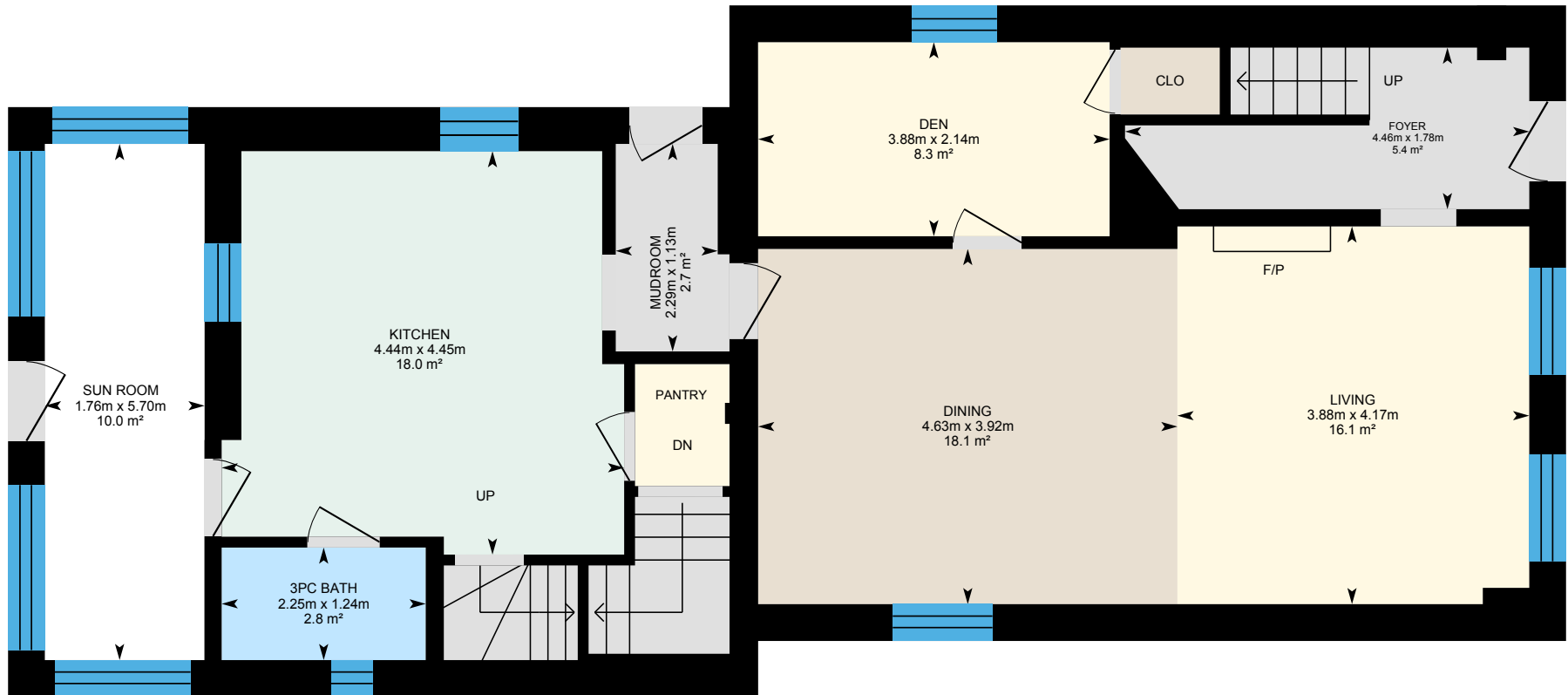
**Garage**



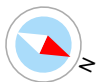
PREPARED: Apr, 2019

# 78 King St, Prince Edward, ON

Main Floor Total Exterior Area 102.7 m<sup>2</sup>  
Total Interior Area 84.8 m<sup>2</sup>



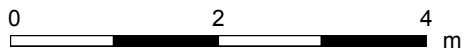
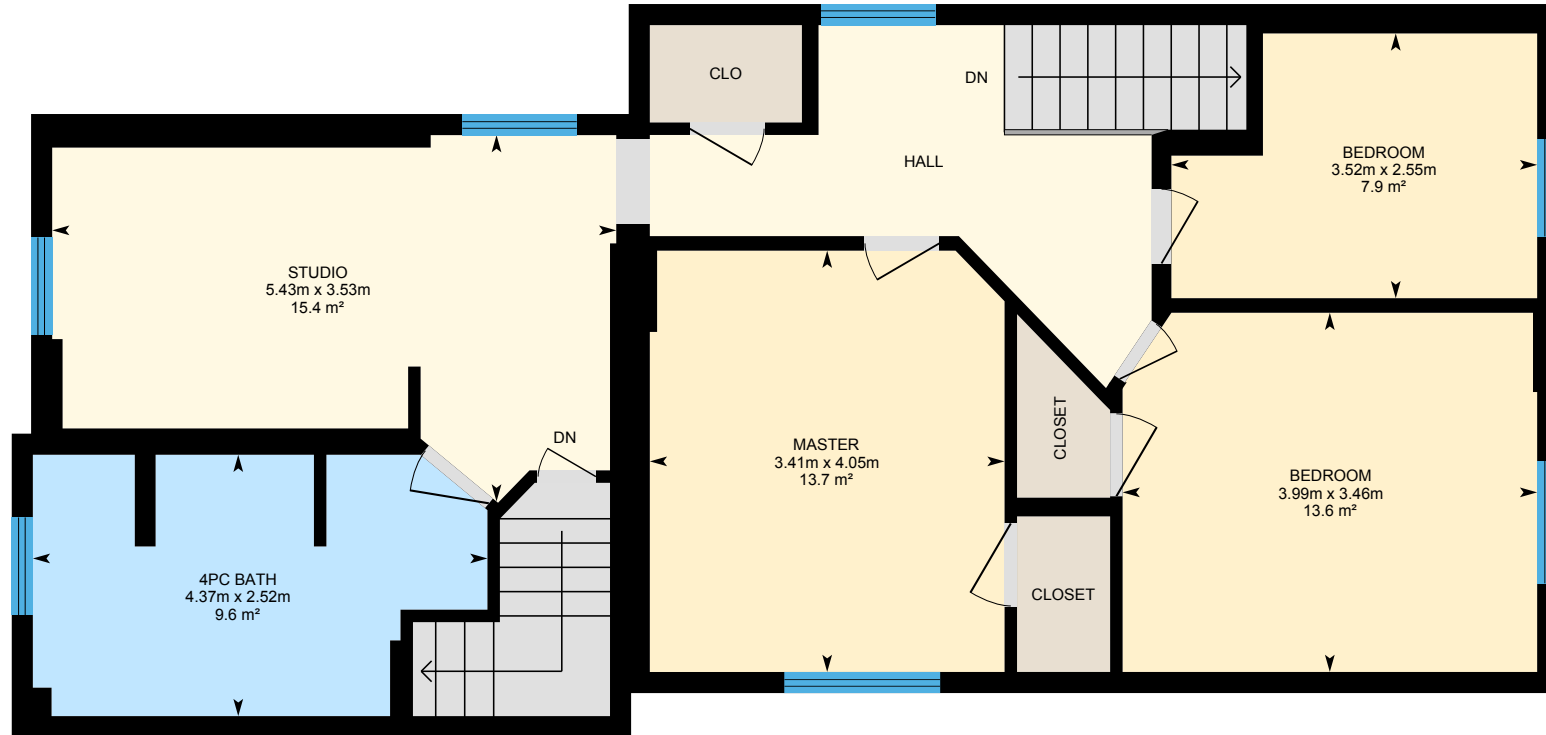
PREPARED: Apr, 2019



White regions are excluded from total floor area. All room dimensions and floor areas must be considered approximate and are subject to independent verification. For method of measurement please see <https://youriguide.com/measure/>.

# 78 King St, Prince Edward, ON

2nd Floor Total Exterior Area 93.5 m<sup>2</sup>  
Total Interior Area 84.8 m<sup>2</sup>



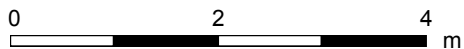
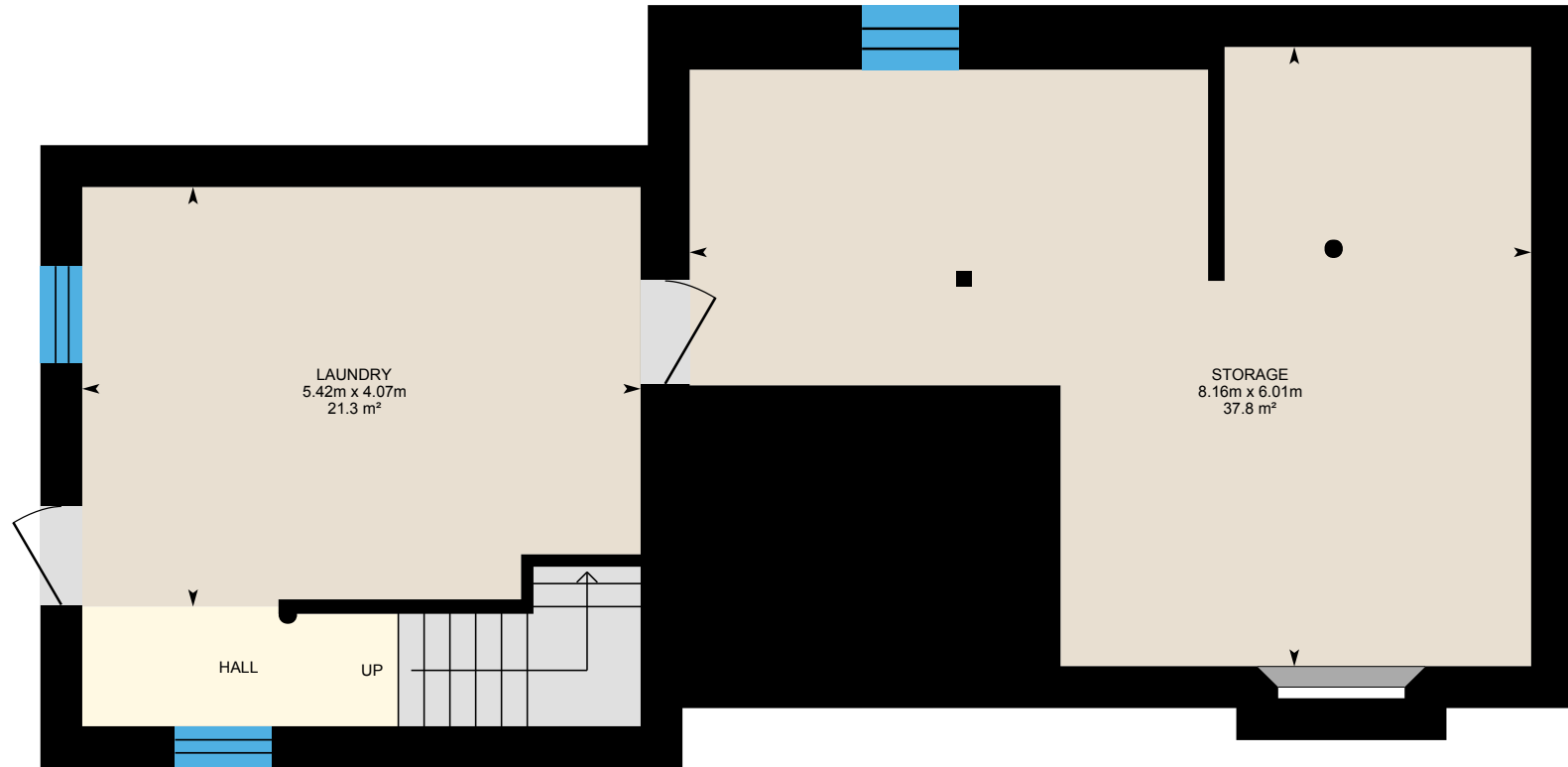
PREPARED: Apr, 2019



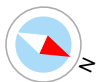
White regions are excluded from total floor area. All room dimensions and floor areas must be considered approximate and are subject to independent verification. For method of measurement please see <https://youriguide.com/measure/>.

# 78 King St, Prince Edward, ON

**Basement** Total Exterior Area 95.5 m<sup>2</sup>  
Total Interior Area 78.1 m<sup>2</sup>



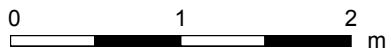
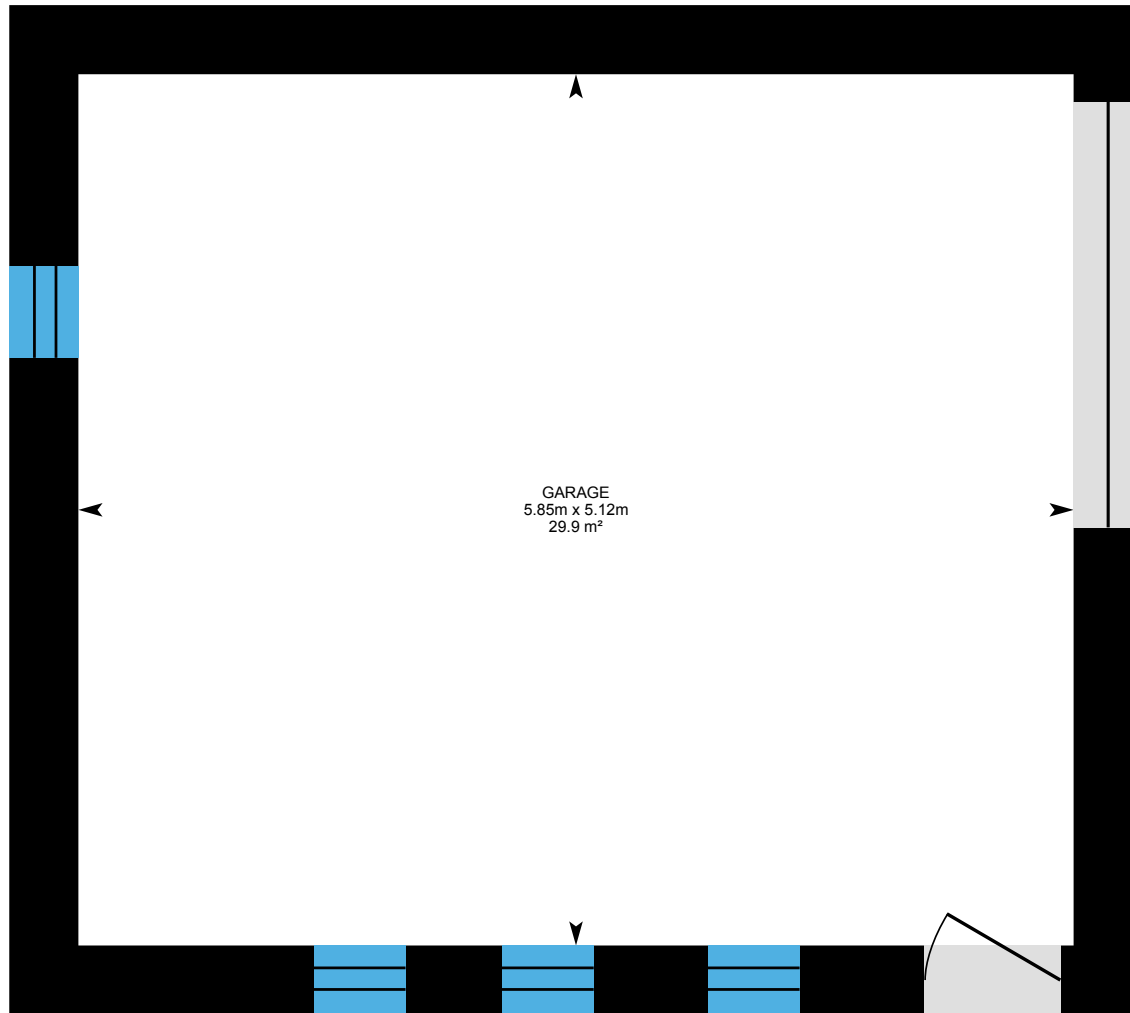
PREPARED: Apr, 2019



White regions are excluded from total floor area. All room dimensions and floor areas must be considered approximate and are subject to independent verification. For method of measurement please see <https://youriguide.com/measure/>.

# 78 King St, Prince Edward, ON

## Garage



PREPARED: Apr, 2019



White regions are excluded from total floor area. All room dimensions and floor areas must be considered approximate and are subject to independent verification. For method of measurement please see <https://youriguide.com/measure/>.

# 78 King St, Prince Edward, ON

## Property Details

### Room Measurements

Only major rooms are listed. Some listed rooms may be excluded from total interior floor area (e.g. garage). Room dimensions are largest length and width; parts of room may be smaller. Room area is not always equal to product of length and width.

#### Main Building

##### MAIN FLOOR

3pc Bath: 1.24m x 2.25m | 2.8 m<sup>2</sup>  
Den: 2.14m x 3.88m | 8.3 m<sup>2</sup>  
Dining: 3.92m x 4.63m | 18.1 m<sup>2</sup>  
Foyer: 1.78m x 4.46m | 5.4 m<sup>2</sup>  
Kitchen: 4.45m x 4.44m | 18.0 m<sup>2</sup>  
Living: 4.17m x 3.88m | 16.1 m<sup>2</sup>  
Mudroom: 2.29m x 1.13m | 2.7 m<sup>2</sup>  
Sun Room: 5.70m x 1.76m | 10.0 m<sup>2</sup>

##### 2ND FLOOR

4pc Bath: 2.52m x 4.37m | 9.6 m<sup>2</sup>  
Bedroom: 3.46m x 3.99m | 13.6 m<sup>2</sup>  
Bedroom: 2.55m x 3.52m | 7.9 m<sup>2</sup>  
Master: 4.05m x 3.41m | 13.7 m<sup>2</sup>  
Studio: 3.53m x 5.43m | 15.4 m<sup>2</sup>

##### BASEMENT

Laundry: 4.07m x 5.42m | 21.3 m<sup>2</sup>  
Storage: 6.01m x 8.16m | 37.8 m<sup>2</sup>

##### GARAGE

Garage: 5.85m x 5.12m | 29.9 m<sup>2</sup>

### Floor Area Information

For explanation of floor area calculations and method of measurement please see <https://youriguide.com/measure/>.

#### Main Building

##### MAIN FLOOR

Interior Area: 84.8 m<sup>2</sup>  
Perimeter Wall Length: 43.9 m  
Perimeter Wall Thickness: 41 cm  
Exterior Area: 102.7 m<sup>2</sup>

##### 2ND FLOOR

Interior Area: 84.8 m<sup>2</sup>  
Perimeter Wall Length: 43.1 m  
Perimeter Wall Thickness: 20 cm  
Exterior Area: 93.5 m<sup>2</sup>

##### BASEMENT (Below Grade)

Interior Area: 78.1 m<sup>2</sup>  
Perimeter Wall Length: 42.9 m  
Perimeter Wall Thickness: 41 cm  
Exterior Area: 95.5 m<sup>2</sup>

##### GARAGE

All space is excluded

#### Total Above Grade Floor Area

Main Building Interior: 169.6 m<sup>2</sup>  
**Main Building Exterior: 196.2 m<sup>2</sup>**