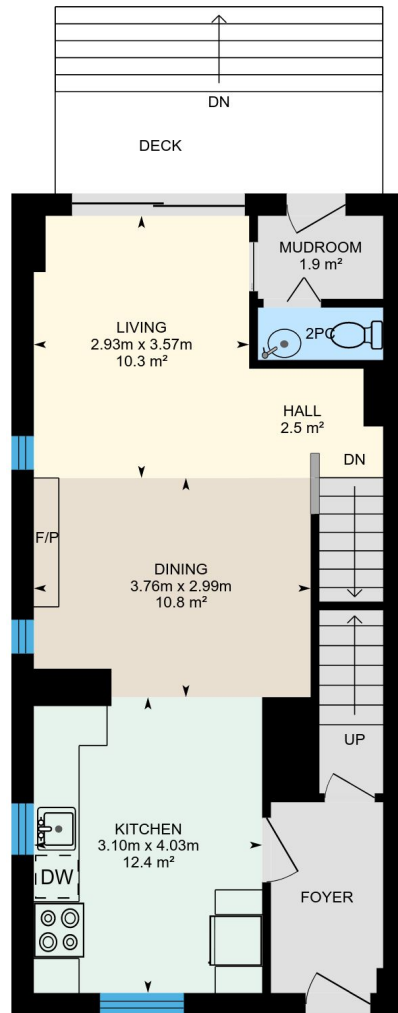


# 13 Woodfield Rd, Toronto, ON

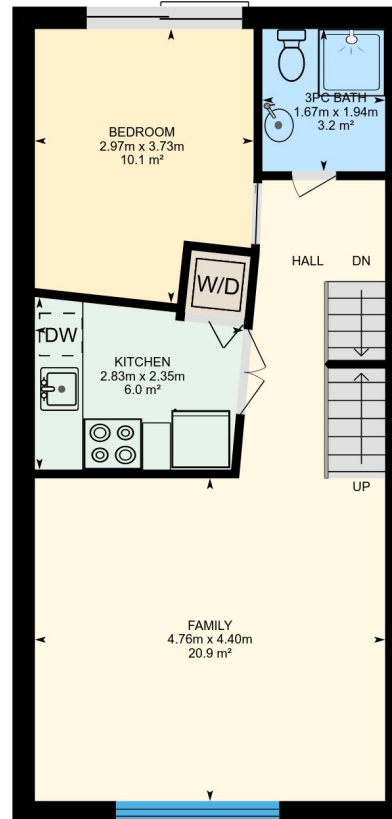
Main Building: Total Exterior Area Above Grade 159.5 m<sup>2</sup>



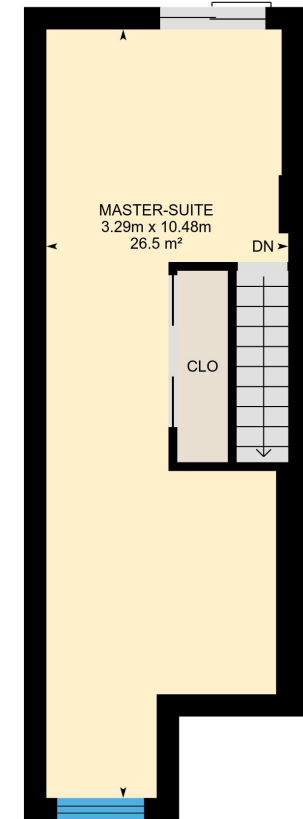
**Main Floor**  
Exterior Area 59.9 m<sup>2</sup>



0 1 2  
m



**2nd Floor**  
Exterior Area 59.8 m<sup>2</sup>



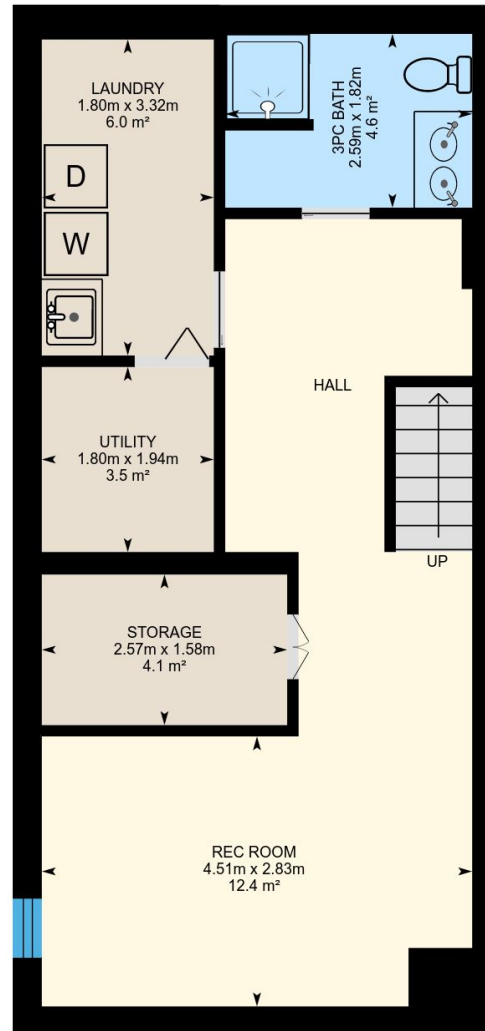
**3rd Floor**  
Exterior Area 39.8 m<sup>2</sup>



PREPARED: Aug, 2018

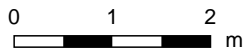
# 13 Woodfield Rd, Toronto, ON

## Main Building



## Lower Floor (Below Grade)

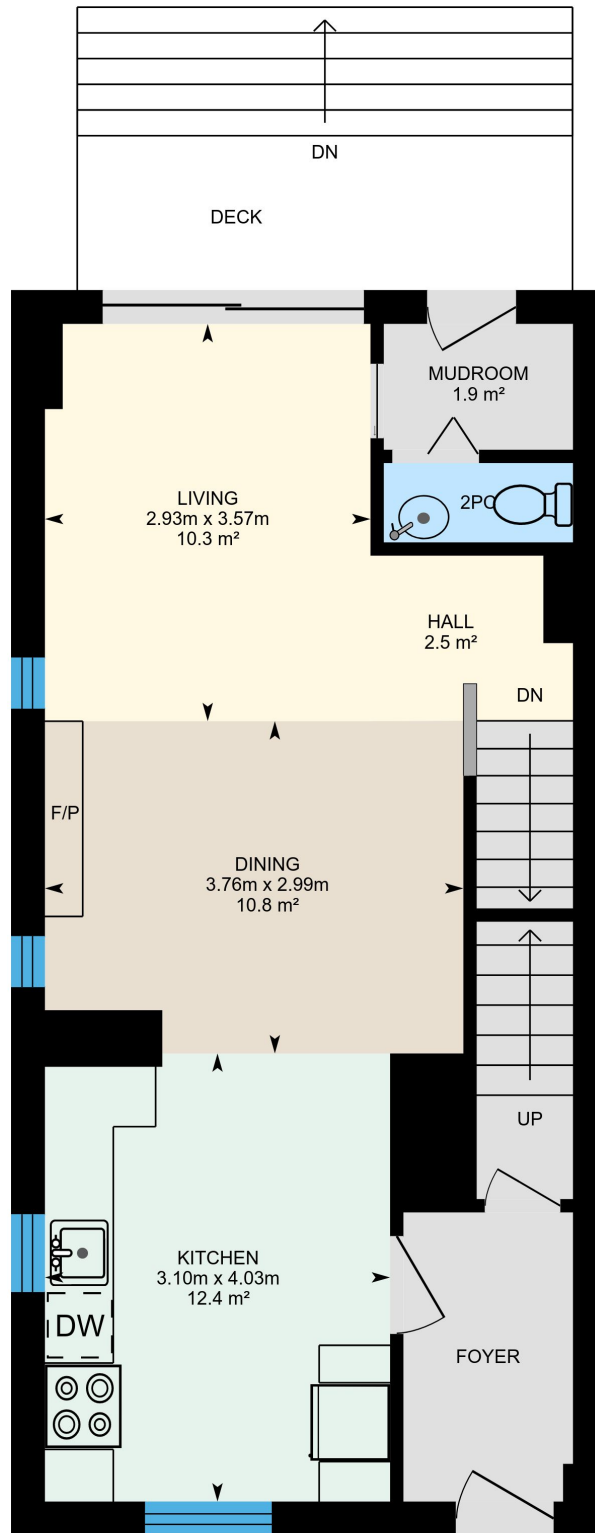
Exterior Area 55.2 m<sup>2</sup>



PREPARED: Aug, 2018

# 13 Woodfield Rd, Toronto, ON

**Main Floor** Total Exterior Area 59.9 m<sup>2</sup>  
Total Interior Area 50.2 m<sup>2</sup>

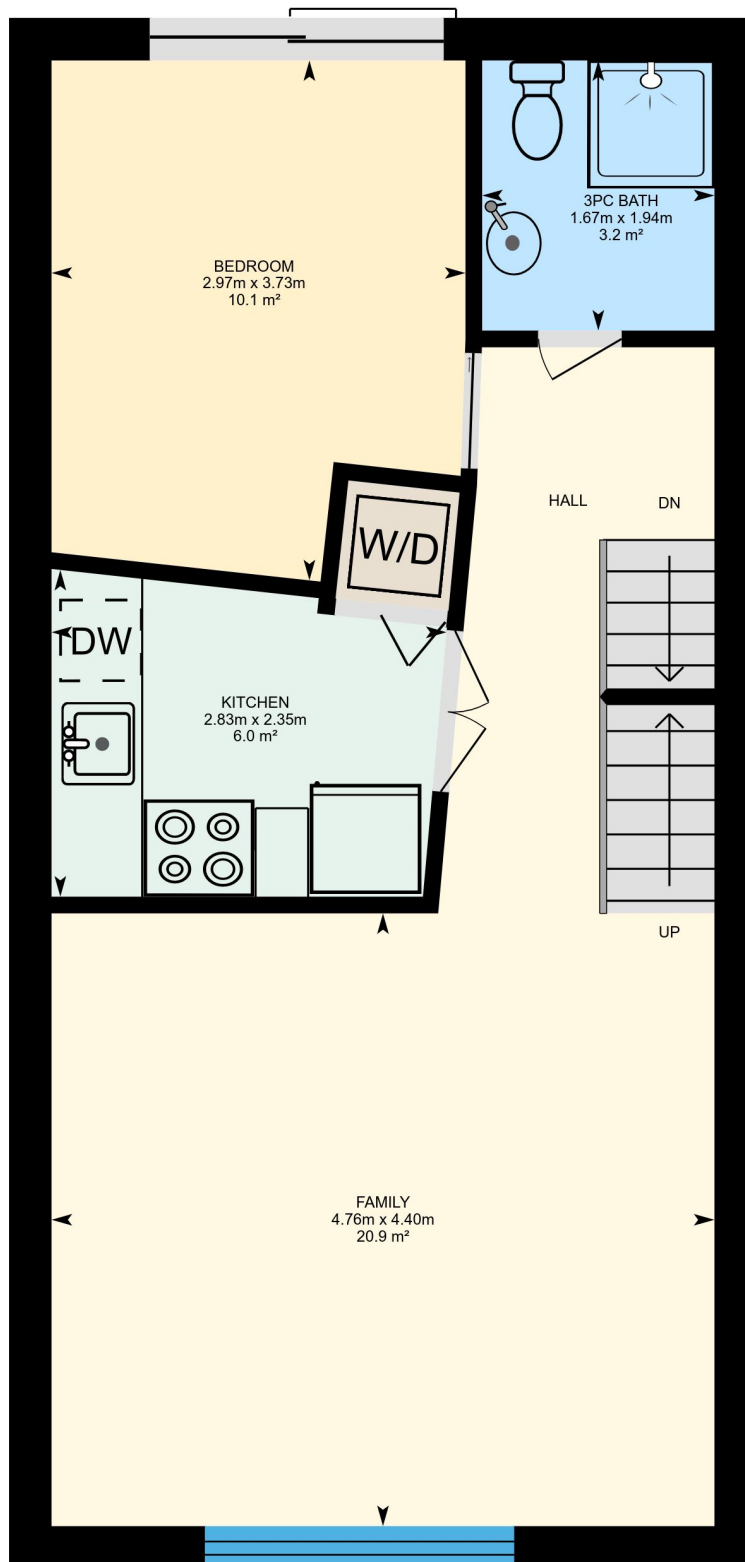


0 1 2  
m

PREPARED: Aug, 2018

# 13 Woodfield Rd, Toronto, ON

**2nd Floor** Total Exterior Area 59.8 m<sup>2</sup>  
Total Interior Area 50.1 m<sup>2</sup>



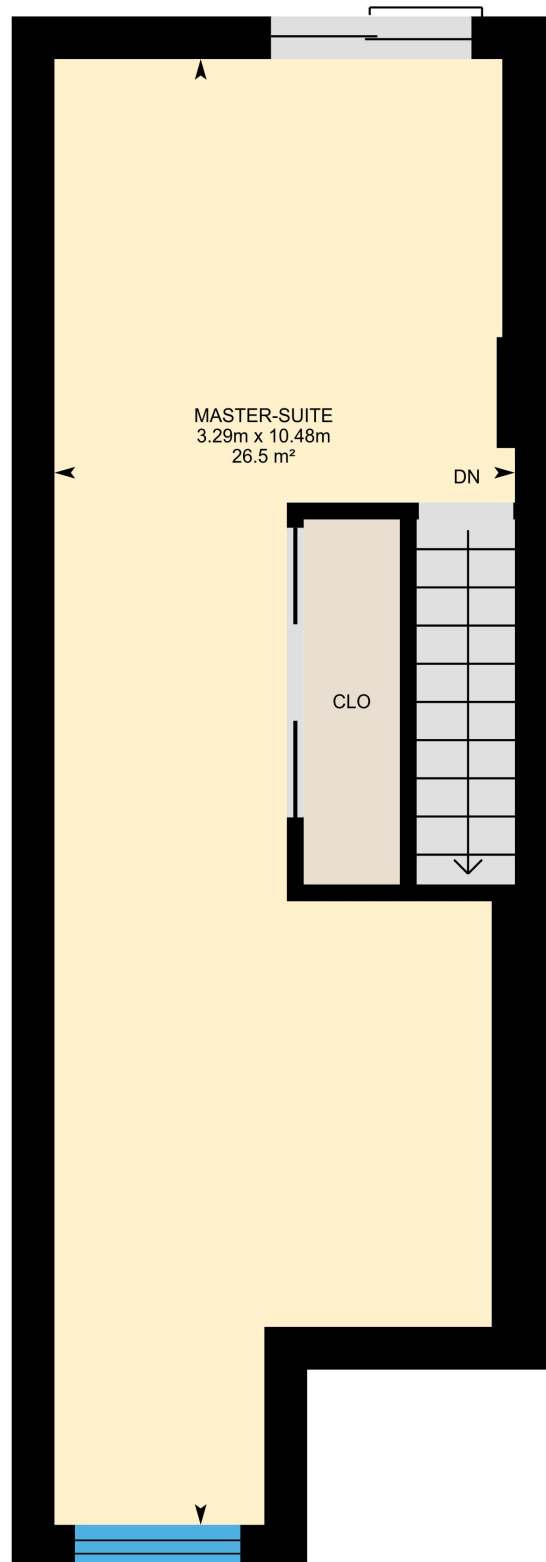
0 1 2 m

PREPARED: Aug, 2018



# 13 Woodfield Rd, Toronto, ON

**3rd Floor** Total Exterior Area 39.8 m<sup>2</sup>  
Total Interior Area 31.1 m<sup>2</sup>



MASTER-SUITE  
3.29m x 10.48m  
26.5 m<sup>2</sup>

DN

CLO

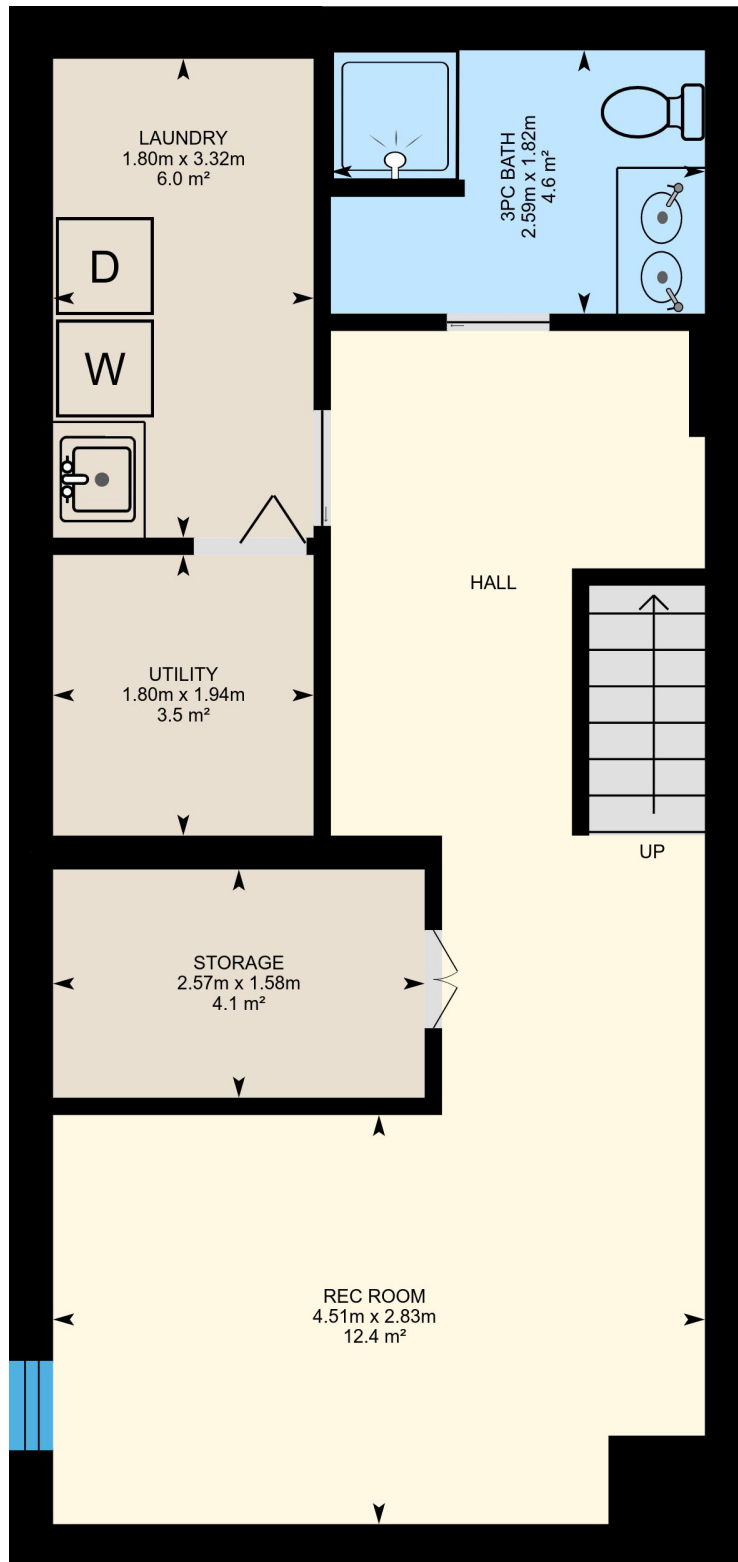
0 1 2 m

PREPARED: Aug, 2018



# 13 Woodfield Rd, Toronto, ON

**Lower Floor** Total Exterior Area 55.2 m<sup>2</sup>  
Total Interior Area 45.8 m<sup>2</sup>



0 1 2 m

PREPARED: Aug, 2018

White regions are excluded from total floor area. All room dimensions and floor areas must be considered approximate and are subject to independent verification. For method of measurement please see <https://youriguide.com/measure/>.

## Property Details

### Room Measurements

Only major rooms are listed. Some listed rooms may be excluded from total interior floor area (e.g. garage). Room dimensions are largest length and width; parts of room may be smaller. Room area is not always equal to product of length and width.

### Main Building

#### MAIN FLOOR

Living: 2.93m x 3.57m | 10.3 m<sup>2</sup>  
Kitchen: 3.10m x 4.03m | 12.4 m<sup>2</sup>  
Mudroom: 1.9 m<sup>2</sup>  
2pc: 1.70m x 0.71m | 1.2 m<sup>2</sup>  
Dining: 3.76m x 2.99m | 10.8 m<sup>2</sup>  
Hall: 2.5 m<sup>2</sup>

#### 2ND FLOOR

Family: 4.76m x 4.40m | 20.9 m<sup>2</sup>  
Kitchen: 2.83m x 2.35m | 6.0 m<sup>2</sup>  
Bedroom: 2.97m x 3.73m | 10.1 m<sup>2</sup>  
3pc Bath: 1.67m x 1.94m | 3.2 m<sup>2</sup>

#### 3RD FLOOR

Master-suite: 3.29m x 10.48m | 26.5 m<sup>2</sup>

#### LOWER FLOOR

Rec Room: 4.51m x 2.83m | 12.4 m<sup>2</sup>  
Storage: 2.57m x 1.58m | 4.1 m<sup>2</sup>  
Utility: 1.80m x 1.94m | 3.5 m<sup>2</sup>  
3pc Bath: 2.59m x 1.82m | 4.6 m<sup>2</sup>  
Laundry: 1.80m x 3.32m | 6.0 m<sup>2</sup>

### Floor Area Information

For explanation of floor area calculations and method of measurement please see <http://youriguide.com/measure/>

### Main Building

Building Perimeter Wall Thickness: 31 cm

#### MAIN FLOOR

Interior Area: 50.2 m<sup>2</sup>  
Perimeter Wall Length: 31.9 m  
Exterior Area: 59.9 m<sup>2</sup>

#### 2ND FLOOR

Interior Area: 50.1 m<sup>2</sup>  
Perimeter Wall Length: 31.8 m  
Exterior Area: 59.8 m<sup>2</sup>

#### 3RD FLOOR

Interior Area: 31.1 m<sup>2</sup>  
Perimeter Wall Length: 28.6 m  
Exterior Area: 39.8 m<sup>2</sup>

#### LOWER FLOOR (Below Grade)

Interior Area: 45.8 m<sup>2</sup>  
Perimeter Wall Length: 30.6 m  
Exterior Area: 55.2 m<sup>2</sup>

### Total Above Grade Floor Area

Main Building Interior: 131.3 m<sup>2</sup>

**Main Building Exterior: 159.5 m<sup>2</sup>**