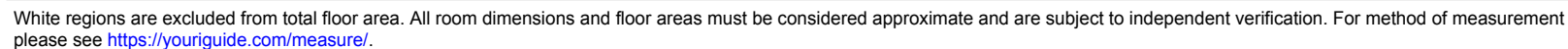
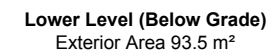
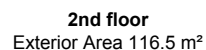
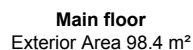
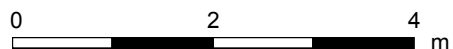
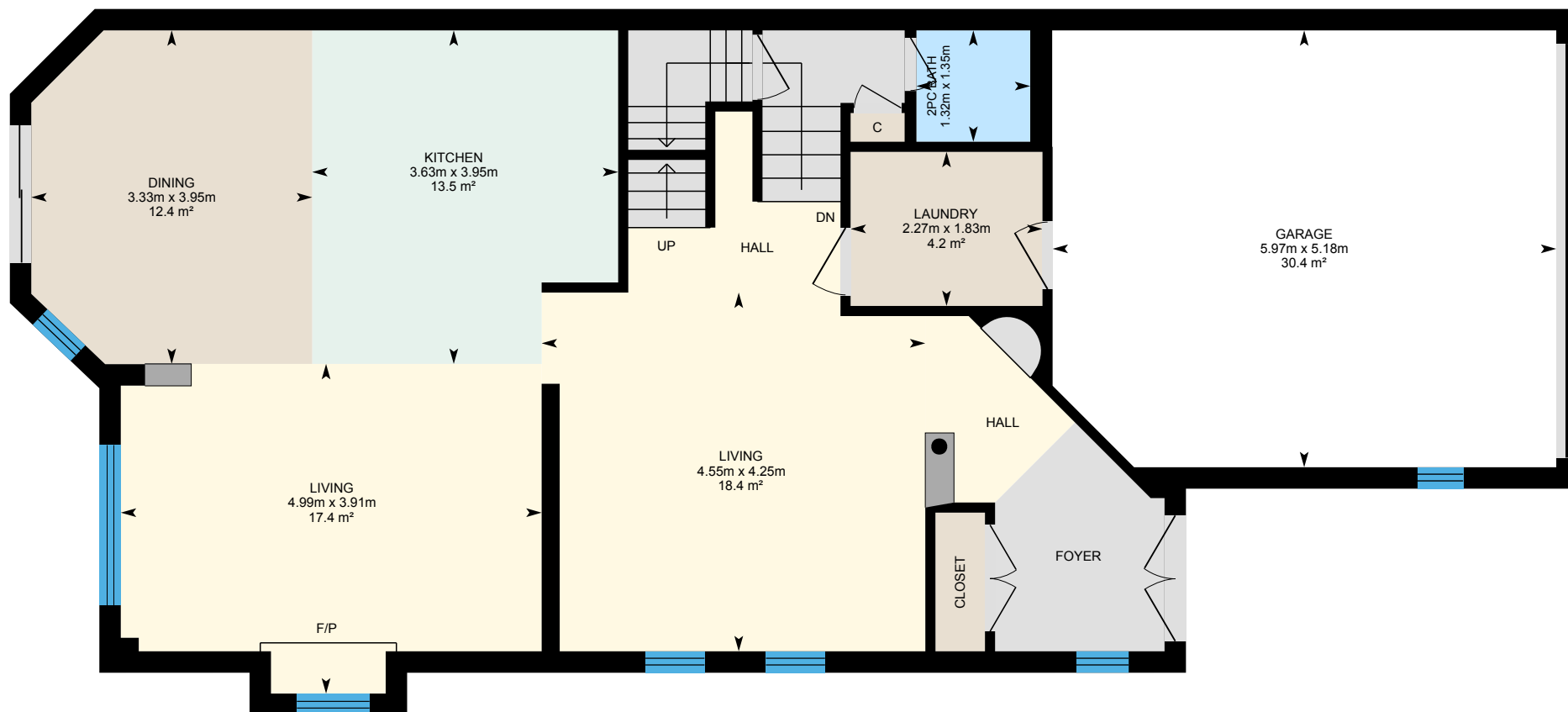


Main Building: Total Exterior Area Above Grade 214.9 m<sup>2</sup>



# 2021 Erin Gate Blvd, Pickering, ON

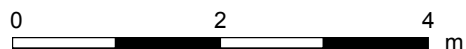
**Main floor** Total Exterior Area 98.4 m<sup>2</sup>  
Total Interior Area 87.8 m<sup>2</sup>



PREPARED: Jul, 2019

## 2021 Erin Gate Blvd, Pickering, ON

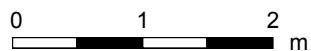
2nd floor    Total Exterior Area 116.5 m<sup>2</sup>  
Total Interior Area 104.5 m<sup>2</sup>



PREPARED: Jul, 2019

# 2021 Erin Gate Blvd, Pickering, ON

Lower Level Total Exterior Area 93.5 m<sup>2</sup>  
Total Interior Area 82.7 m<sup>2</sup>



PREPARED: Jul, 2019

White regions are excluded from total floor area. All room dimensions and floor areas must be considered approximate and are subject to independent verification. For method of measurement please see <https://youriguide.com/measure/>.

# 2021 Erin Gate Blvd, Pickering, ON

## Property Details

### Room Measurements

Only major rooms are listed. Some listed rooms may be excluded from total interior floor area (e.g. garage). Room dimensions are largest length and width; parts of room may be smaller. Room area is not always equal to product of length and width.

### Main Building

#### MAIN FLOOR

2pc Bath: 1.32m x 1.35m | 1.8 m<sup>2</sup>

Dining: 3.95m x 3.33m | 12.4 m<sup>2</sup>

Garage: 5.18m x 5.97m | 30.4 m<sup>2</sup>

Kitchen: 3.95m x 3.63m | 13.5 m<sup>2</sup>

Laundry: 1.83m x 2.27m | 4.2 m<sup>2</sup>

Living: 3.91m x 4.99m | 17.4 m<sup>2</sup>

Living: 4.25m x 4.55m | 18.4 m<sup>2</sup>

#### 2ND FLOOR

4pc Bath: 2.34m x 2.33m | 4.8 m<sup>2</sup>

4pc Ensuite: 3.97m x 4.84m | 13.1 m<sup>2</sup>

Bedroom 2: 3.62m x 3.12m | 11.3 m<sup>2</sup>

Bedroom 3: 3.62m x 3.31m | 11.8 m<sup>2</sup>

Bedroom 4: 4.16m x 3.80m | 14.7 m<sup>2</sup>

Master: 4.73m x 5.01m | 21.0 m<sup>2</sup>

#### LOWER LEVEL

3pc Bath: 2.82m x 2.11m | 4.4 m<sup>2</sup>

Bedroom: 2.89m x 4.83m | 11.6 m<sup>2</sup>

Kitchen: 1.95m x 3.56m | 6.9 m<sup>2</sup>

Rec Room: 5.92m x 5.80m | 28.1 m<sup>2</sup>

Storage: 4.00m x 2.63m | 10.5 m<sup>2</sup>

Utility: 1.83m x 3.08m | 5.6 m<sup>2</sup>

### Floor Area Information

For explanation of floor area calculations and method of measurement please see <https://youriguide.com/measure/>.

### Main Building

#### MAIN FLOOR

Interior Area: 87.8 m<sup>2</sup>

Perimeter Wall Length: 41.8 m

Perimeter Wall Thickness: 25 cm

Exterior Area: 98.4 m<sup>2</sup>

#### 2ND FLOOR

Interior Area: 104.5 m<sup>2</sup>

Perimeter Wall Length: 47.3 m

Perimeter Wall Thickness: 25 cm

Exterior Area: 116.5 m<sup>2</sup>

#### LOWER LEVEL (Below Grade)

Interior Area: 82.7 m<sup>2</sup>

Perimeter Wall Length: 43.3 m

Perimeter Wall Thickness: 25 cm

Exterior Area: 93.5 m<sup>2</sup>

### Total Above Grade Floor Area

Main Building Interior: 192.3 m<sup>2</sup>

**Main Building Exterior: 214.9 m<sup>2</sup>**