

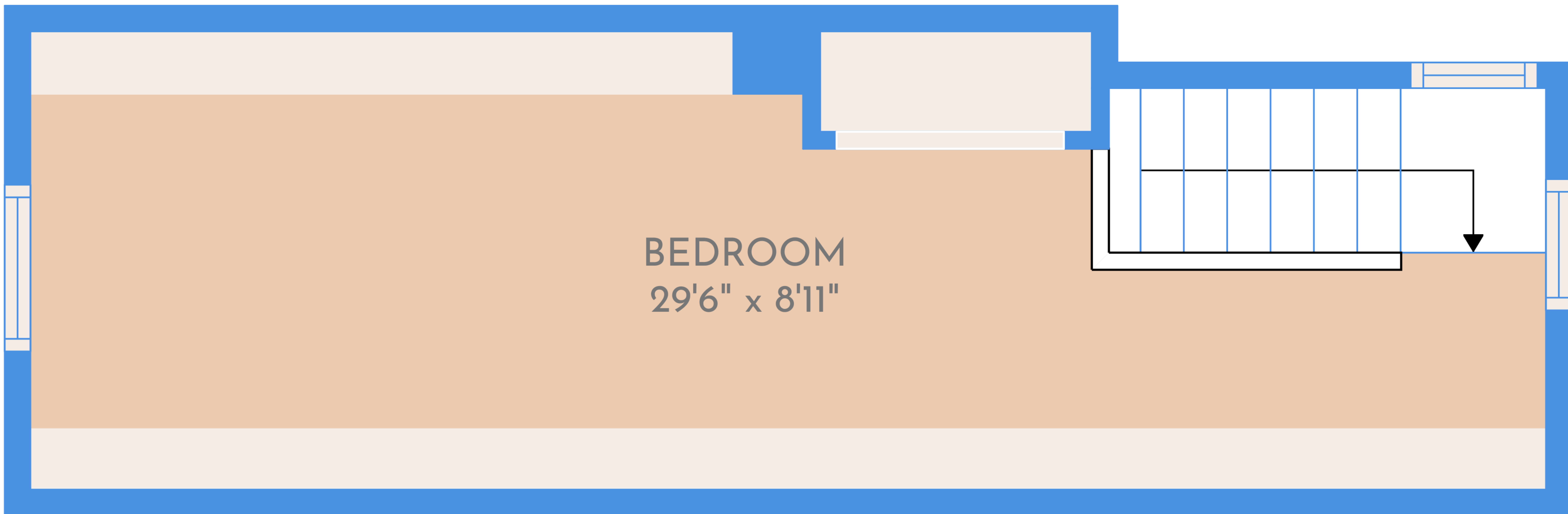
TOTAL: 887 sq. ft

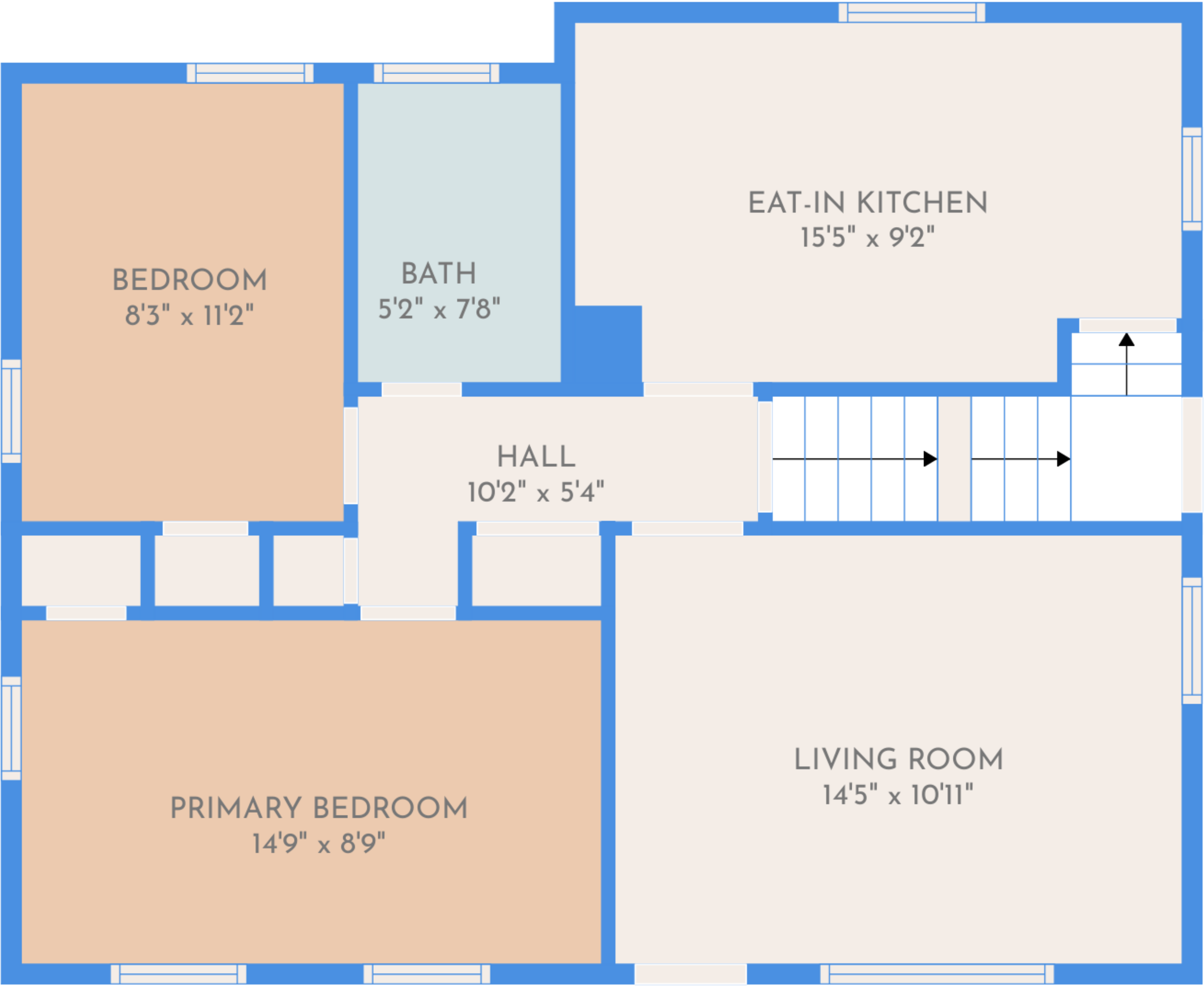
BELOW GROUND: 0 sq. ft, FLOOR 2: 686 sq. ft, FLOOR 3: 201 sq. ft

EXCLUDED AREAS: ROOM: 81 sq. ft, BASEMENT: 581 sq. ft, LOW CEILING: 53 sq. ft

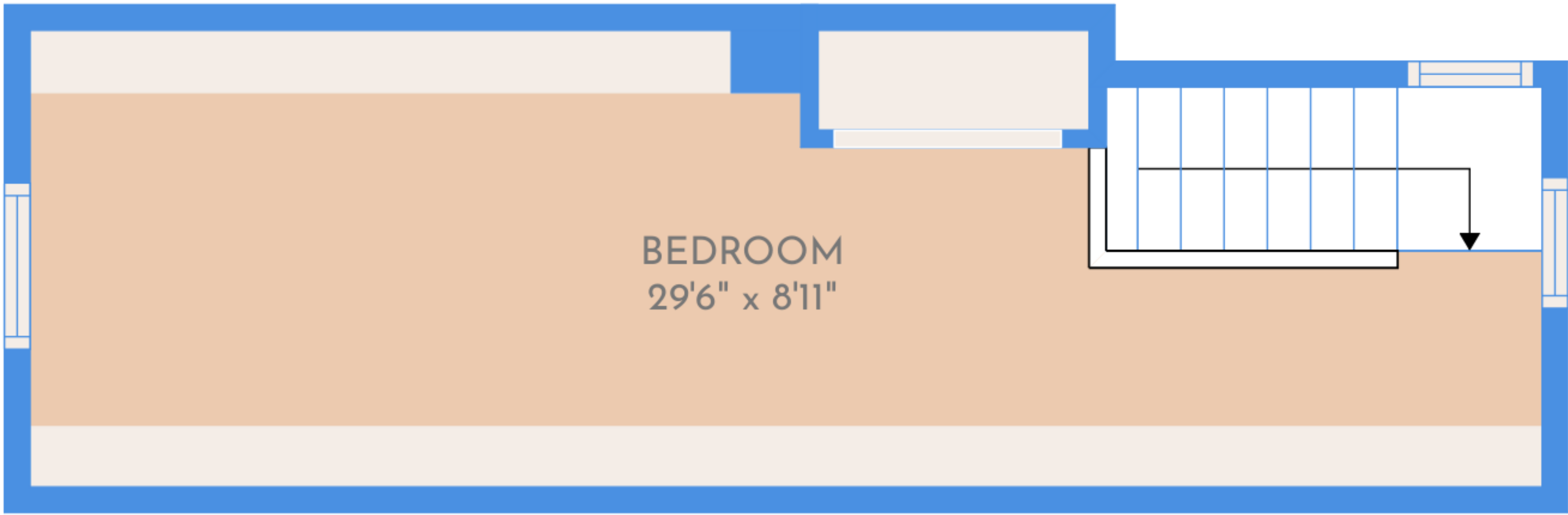
WALLS: 146 sq. ft

SIZES AND DIMENSIONS ARE APPROXIMATE, ACTUAL MAY VARY.

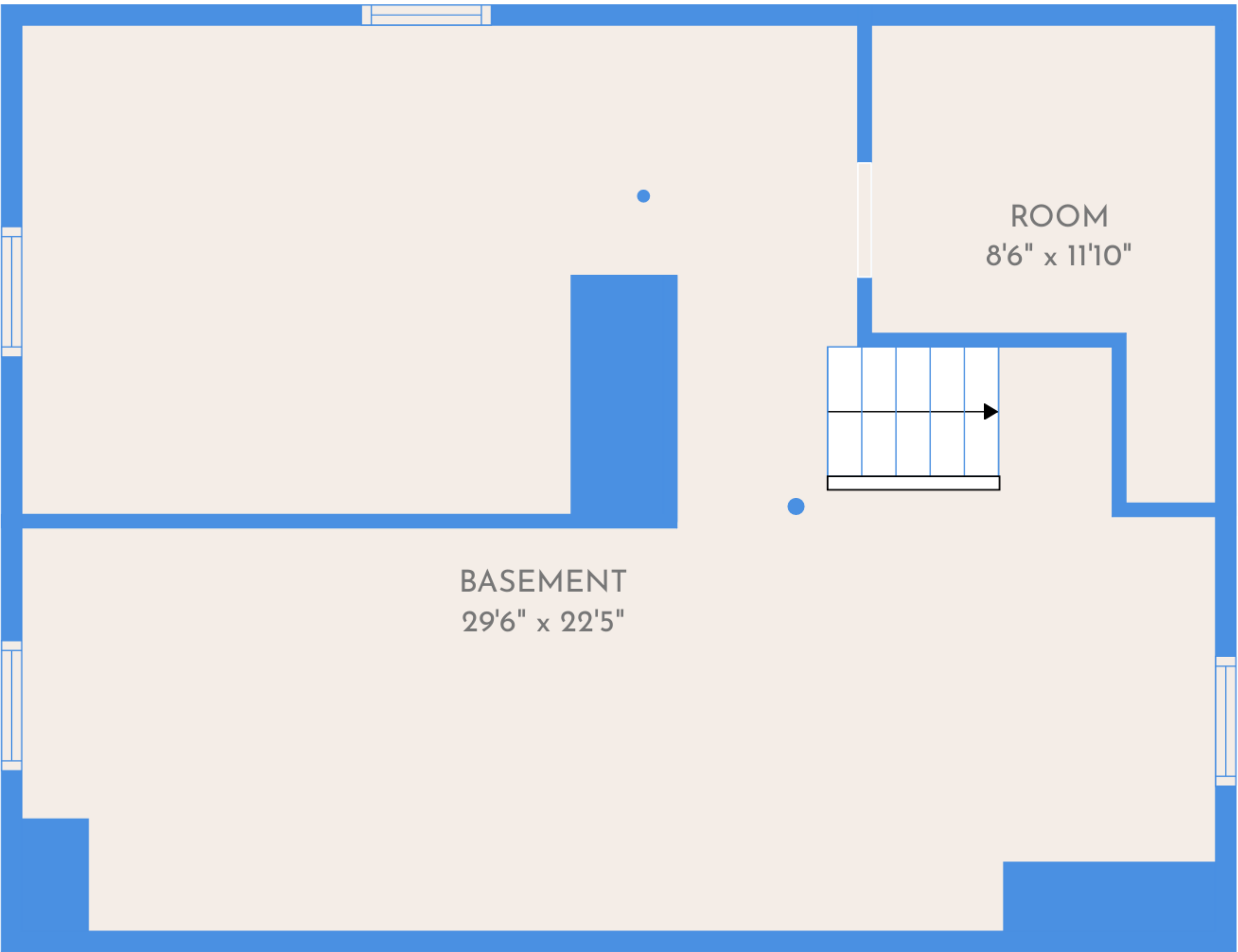




FLOOR 2



FLOOR 3



FLOOR 1



TOTAL: 887 sq. ft
BELOW GROUND: 0 sq. ft, FLOOR 2: 686 sq. ft, FLOOR 3: 201 sq. ft
EXCLUDED AREAS: ROOM: 81 sq. ft, BASEMENT: 581 sq. ft, LOW CEILING: 53 sq. ft
WALLS: 146 sq. ft

SIZES AND DIMENSIONS ARE APPROXIMATE, ACTUAL MAY VARY.