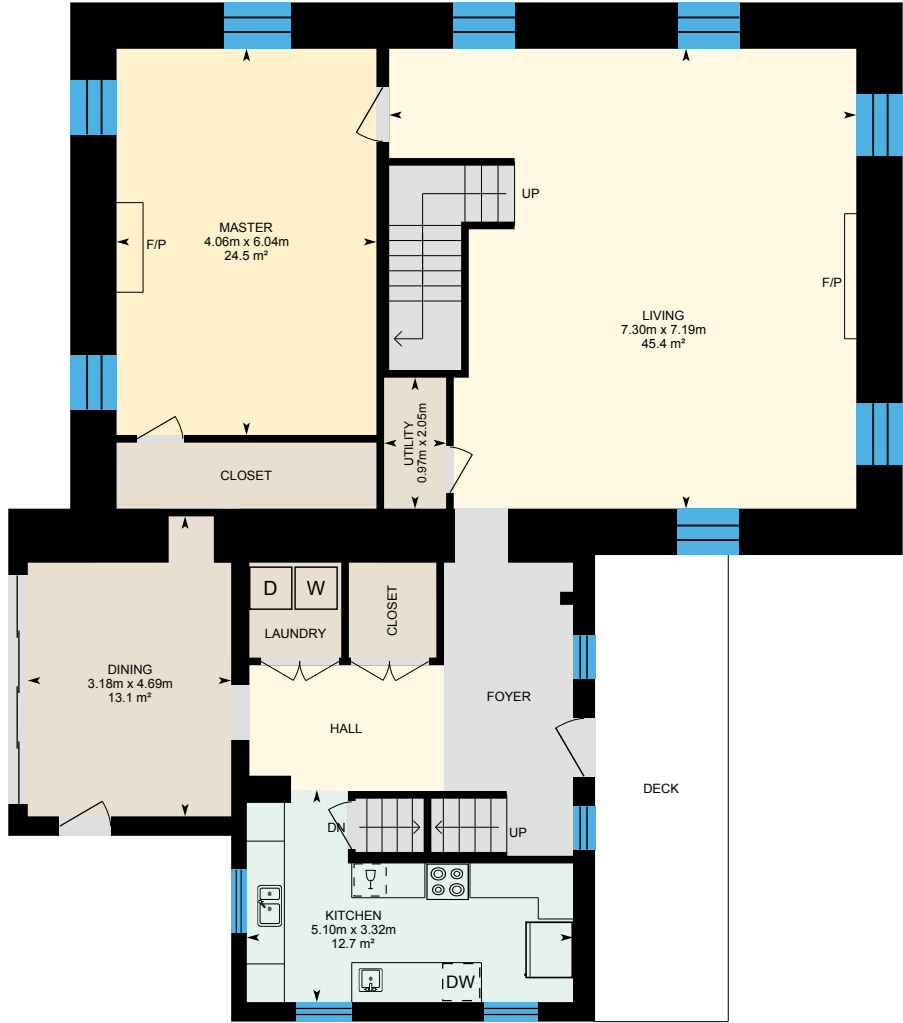
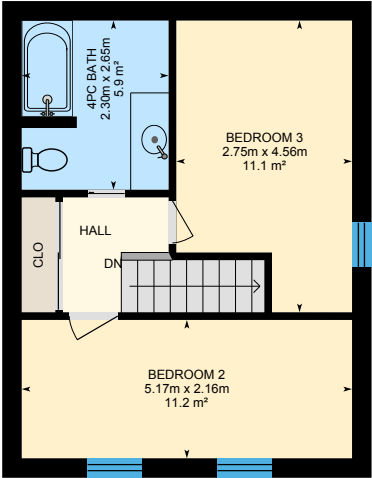


10323 Highway 62, Sterling, ON

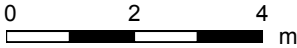
Main Building: Total Exterior Area Above Grade 251.2 m²



Main Floor  
Exterior Area 155.7 m²

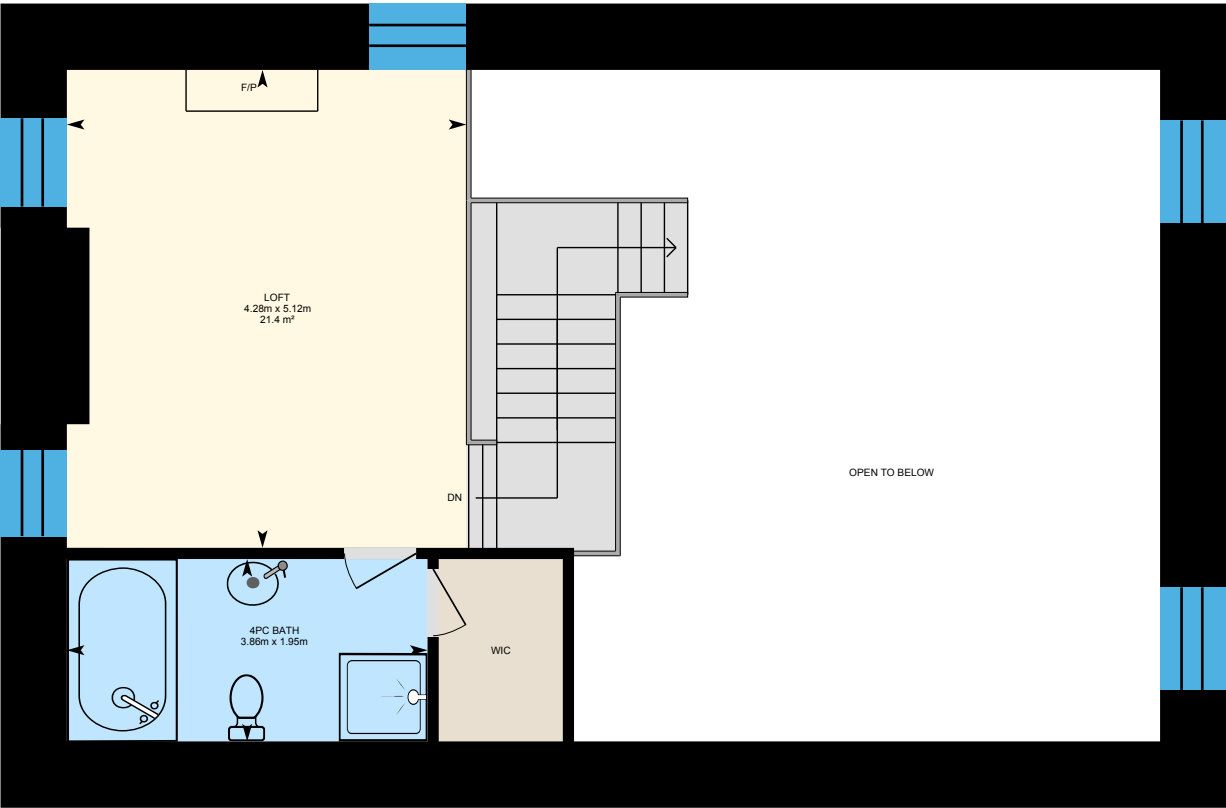


2nd Floor  
Exterior Area 43.0 m²

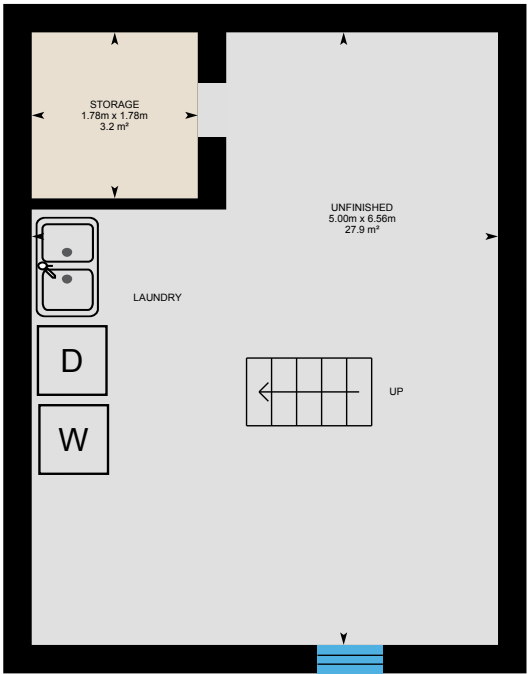


10323 Highway 62, Sterling, ON

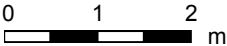
Main Building: Total Exterior Area Above Grade 251.2 m²



Loft  
Exterior Area 52.4 m²

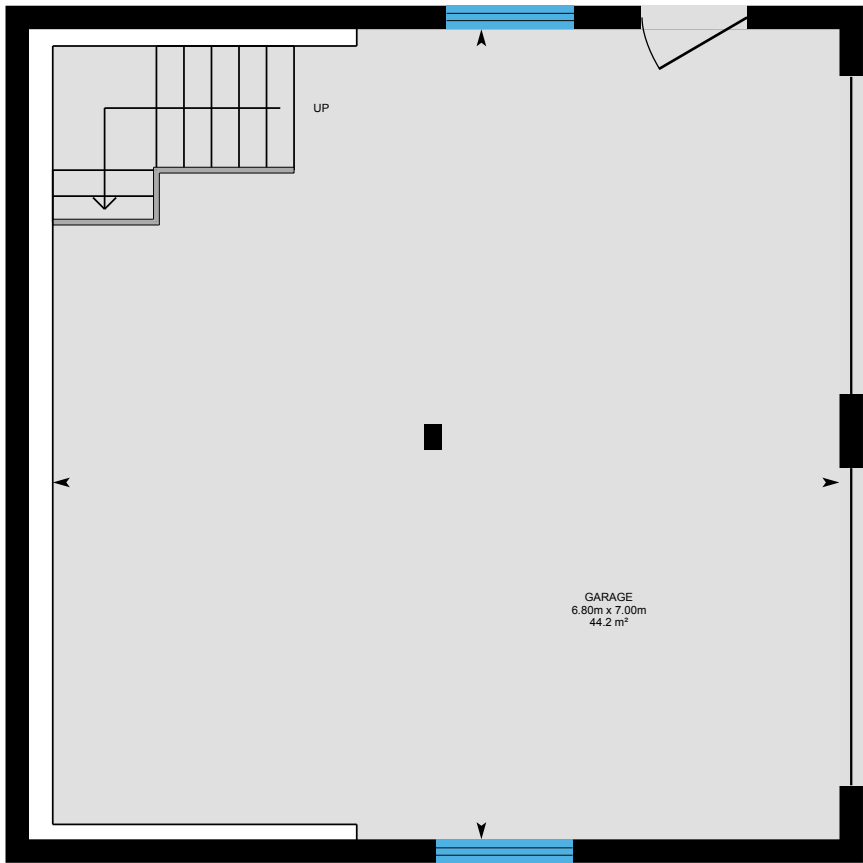


Basement (Below Grade)  
Exterior Area 40.2 m²

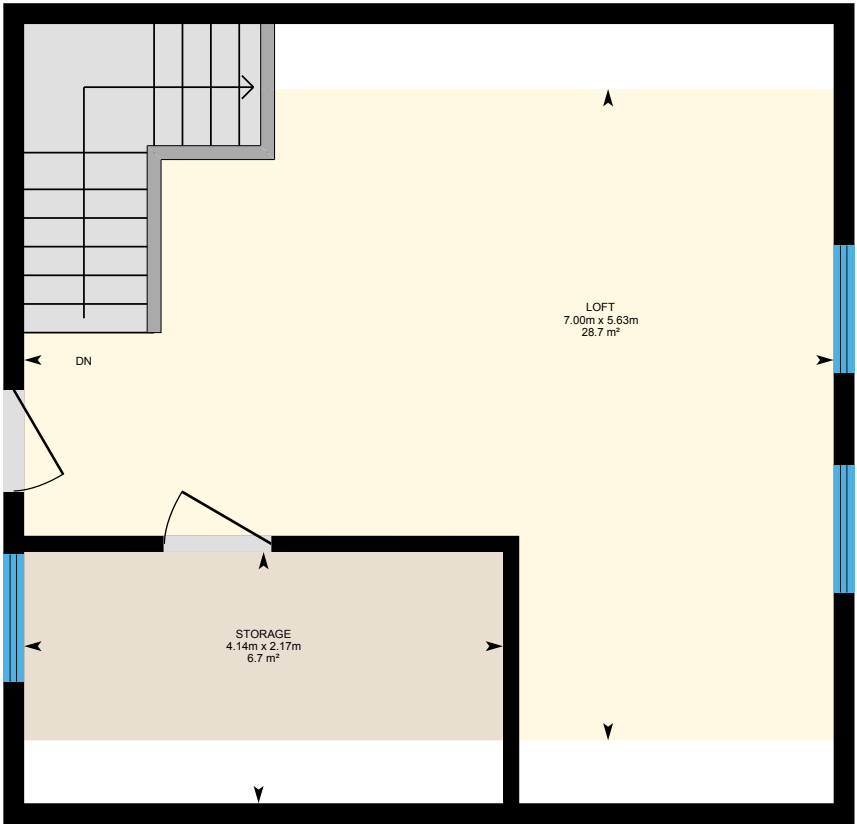


10323 Highway 62, Sterling, ON

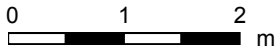
Detached Garage: Total Exterior Area Above Grade 52.6 m<sup>2</sup>



Garage



Garage 2nd floor



# 10323 Highway 62, Sterling, ON

**Main Floor** Total Exterior Area 155.7 m<sup>2</sup>  
Total Interior Area 138.1 m<sup>2</sup>



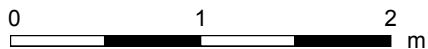
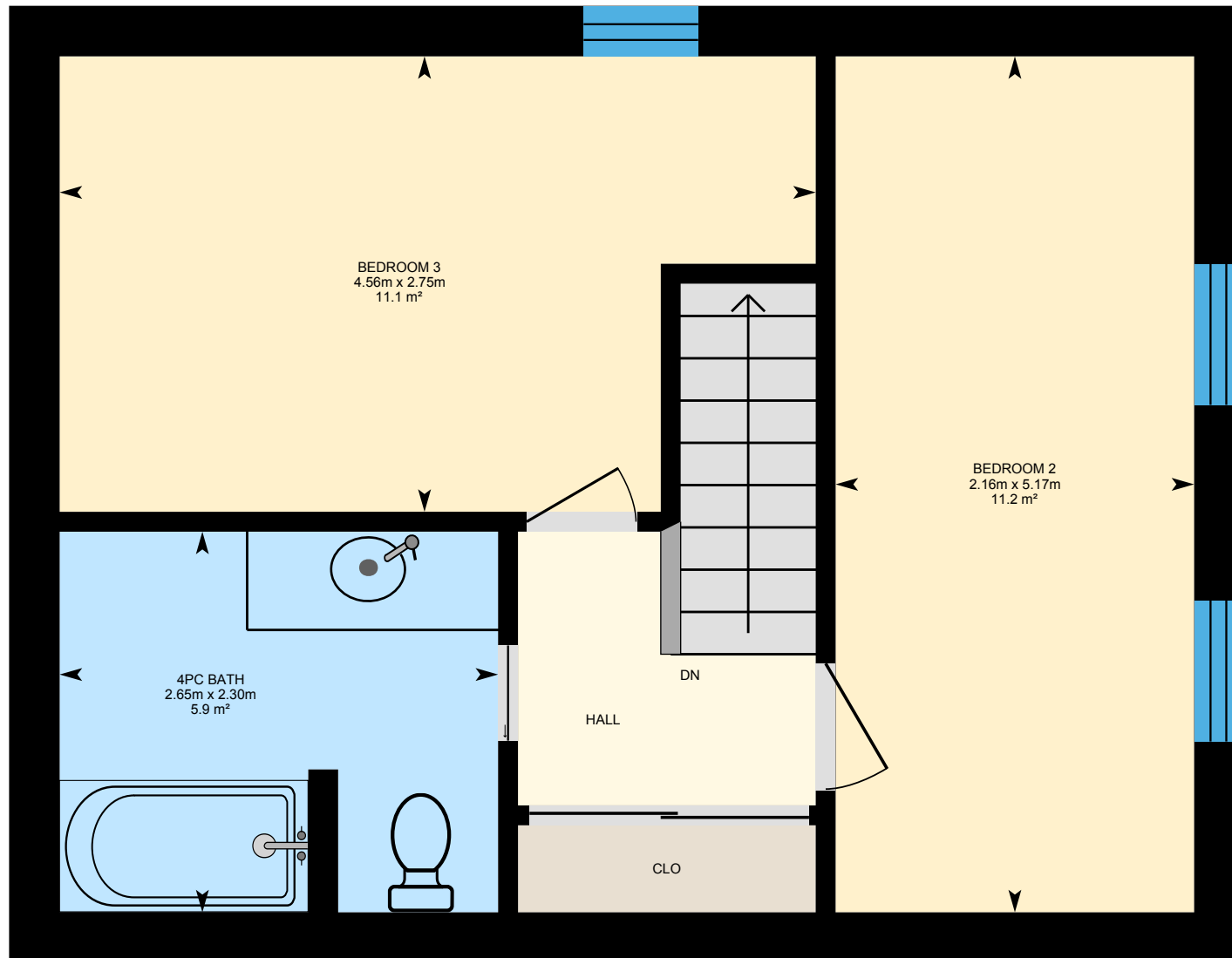
0 2 4 m

PREPARED: May, 2019



# 10323 Highway 62, Sterling, ON

2nd Floor Total Exterior Area 43.0 m<sup>2</sup>  
Total Interior Area 35.3 m<sup>2</sup>



PREPARED: May, 2019

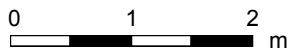
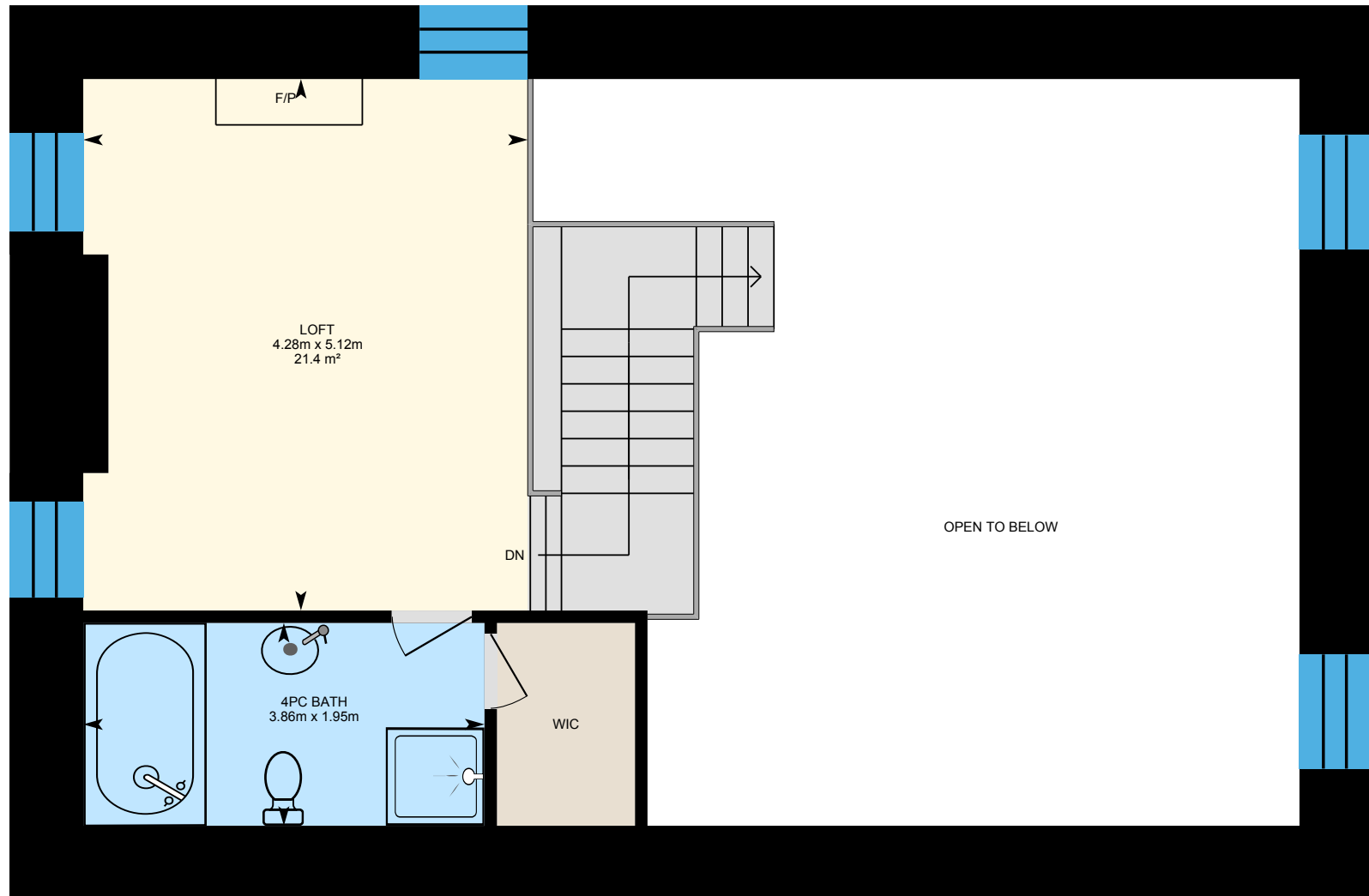


White regions are excluded from total floor area. All room dimensions and floor areas must be considered approximate and are subject to independent verification. For method of measurement please see <https://youriguide.com/measure/>.

# 10323 Highway 62, Sterling, ON

Loft Total Exterior Area 52.4 m<sup>2</sup>

Total Interior Area 39.4 m<sup>2</sup>



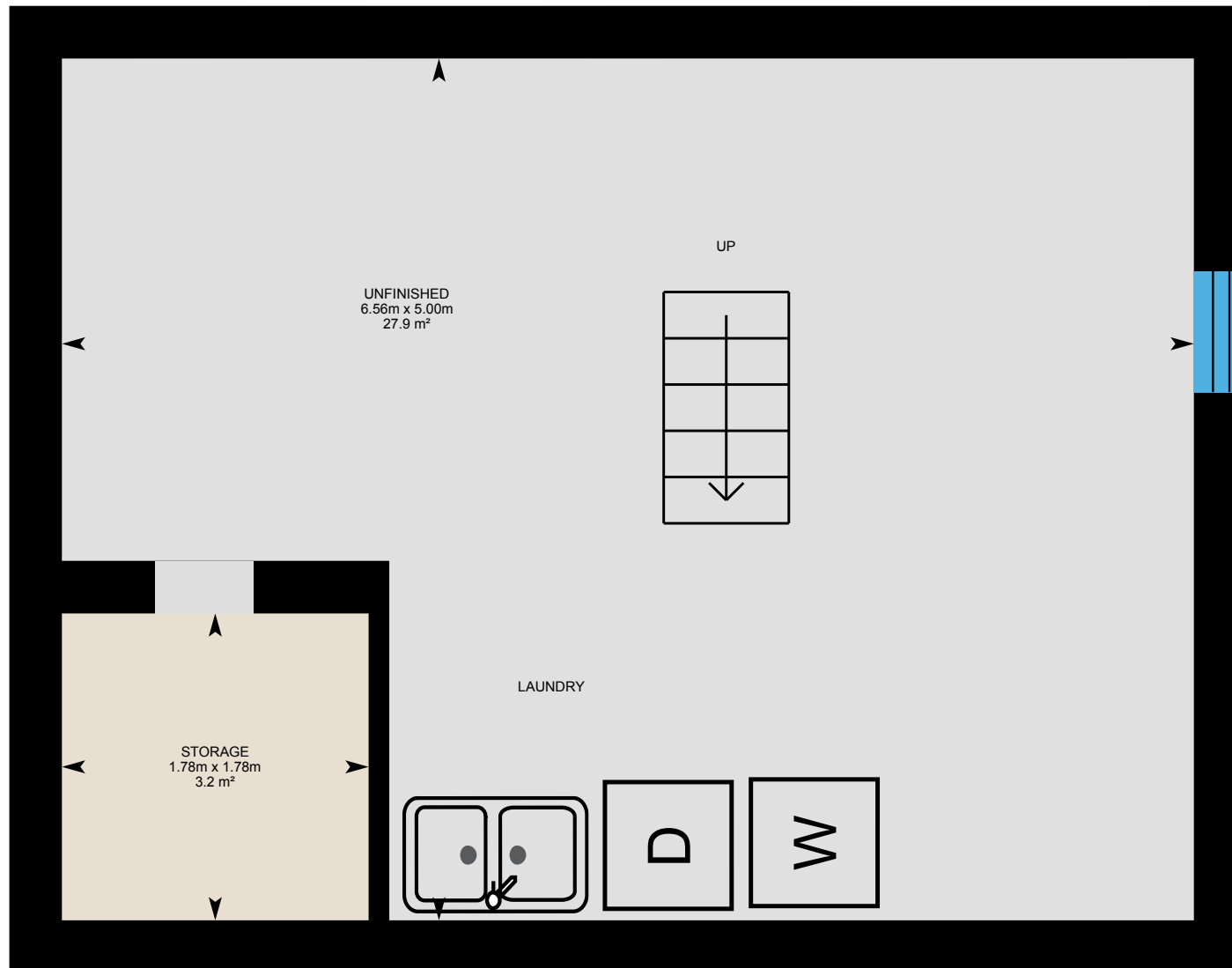
PREPARED: May, 2019



White regions are excluded from total floor area. All room dimensions and floor areas must be considered approximate and are subject to independent verification. For method of measurement please see <https://youriguide.com/measure/>.

# 10323 Highway 62, Sterling, ON

**Basement** Total Exterior Area 40.2 m<sup>2</sup>  
Total Interior Area 32.8 m<sup>2</sup>



0 1 2 m

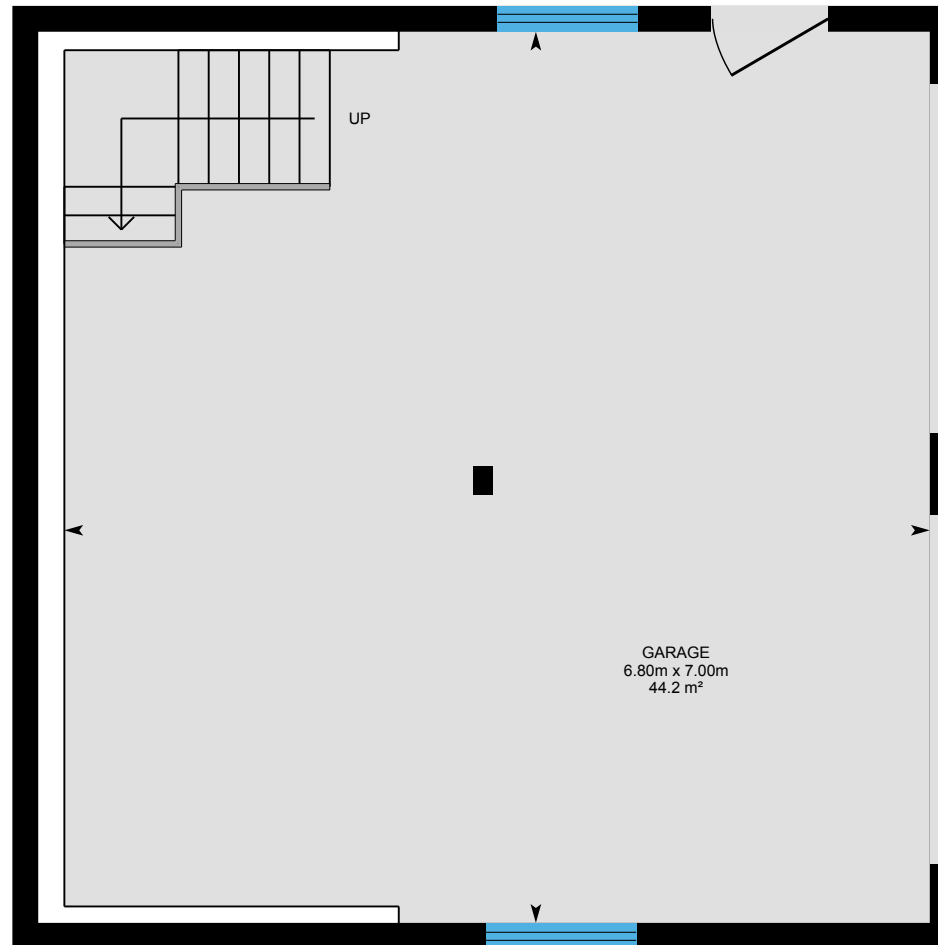
PREPARED: May, 2019



White regions are excluded from total floor area. All room dimensions and floor areas must be considered approximate and are subject to independent verification. For method of measurement please see <https://youriguide.com/measure/>.

# 10323 Highway 62, Sterling, ON

**Garage** Total Exterior Area 52.6 m<sup>2</sup>  
Total Interior Area 46.9 m<sup>2</sup>



0 1 2 m

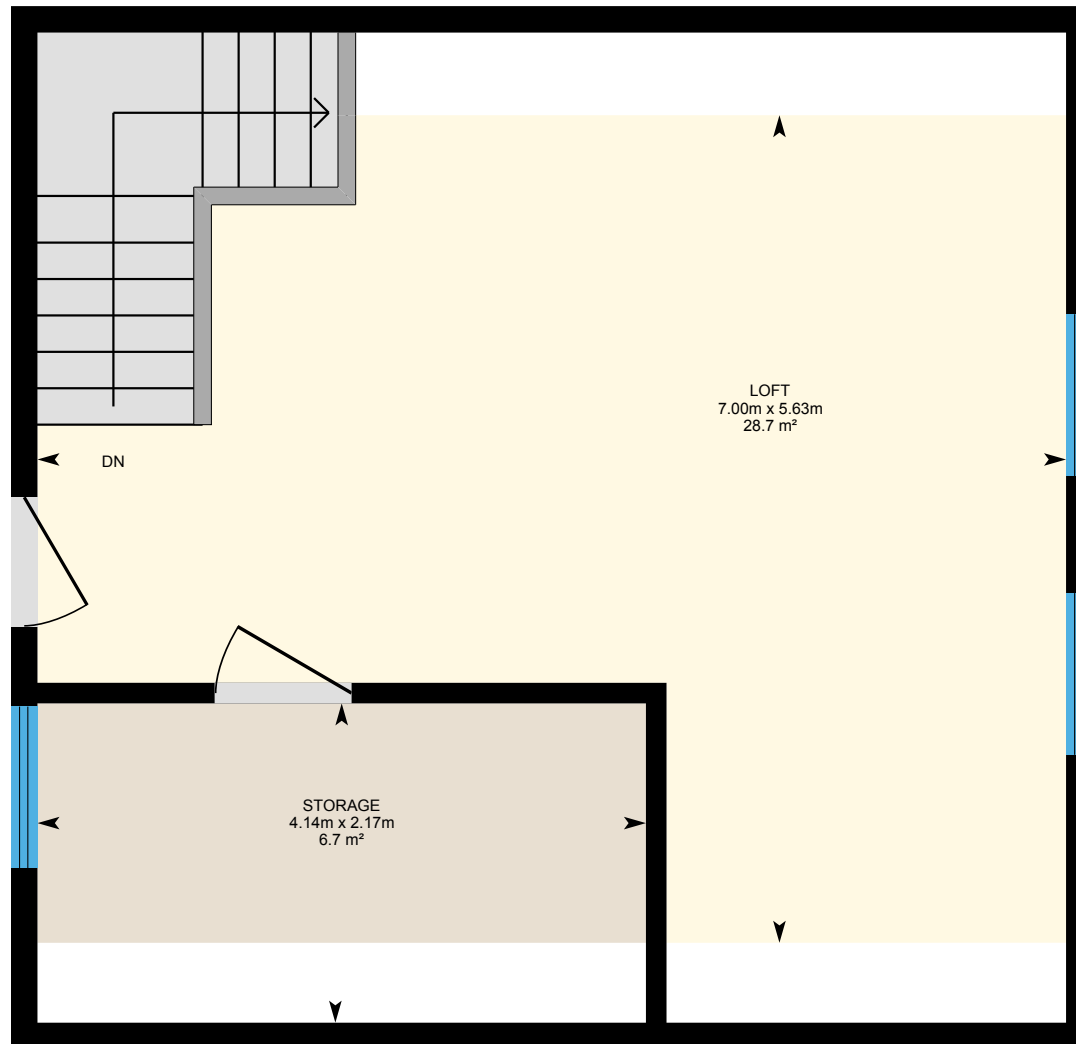
PREPARED: May, 2019





# 10323 Highway 62, Sterling, ON

Garage 2nd floor Total Interior Area 40.5 m<sup>2</sup>



0 1 2 m

PREPARED: May, 2019



White regions are excluded from total floor area. All room dimensions and floor areas must be considered approximate and are subject to independent verification. For method of measurement please see <https://youriguide.com/measure/>.

# 10323 Highway 62, Sterling, ON

## Property Details

### Room Measurements

Only major rooms are listed. Some listed rooms may be excluded from total interior floor area (e.g. garage). Room dimensions are largest length and width; parts of room may be smaller. Room area is not always equal to product of length and width.

#### Main Building

##### MAIN FLOOR

Dining: 3.18m x 4.69m | 13.1 m<sup>2</sup>

Kitchen: 5.10m x 3.32m | 12.7 m<sup>2</sup>

Living: 7.30m x 7.19m | 45.4 m<sup>2</sup>

Master: 4.06m x 6.04m | 24.5 m<sup>2</sup>

Utility: 0.97m x 2.05m

##### 2ND FLOOR

4pc Bath: 2.30m x 2.65m | 5.9 m<sup>2</sup>

Bedroom 2: 5.17m x 2.16m | 11.2 m<sup>2</sup>

Bedroom 3: 2.75m x 4.56m | 11.1 m<sup>2</sup>

##### LOFT

4pc Bath: 3.86m x 1.95m | 7.6 m<sup>2</sup>

Loft: 4.28m x 5.12m | 21.4 m<sup>2</sup>

##### BASEMENT

Storage: 1.78m x 1.78m | 3.2 m<sup>2</sup>

Unfinished: 5.00m x 6.56m | 27.9 m<sup>2</sup>

#### Detached Garage

### Floor Area Information

For explanation of floor area calculations and method of measurement please see <https://youriguide.com/measure/>.

#### Main Building

##### MAIN FLOOR

Interior Area: 138.1 m<sup>2</sup>

Perimeter Wall Length: 57.8 m

Perimeter Wall Thickness: 31 cm

Exterior Area: 155.7 m<sup>2</sup>

##### 2ND FLOOR

Interior Area: 35.3 m<sup>2</sup>

Perimeter Wall Length: 25.2 m

Perimeter Wall Thickness: 31 cm

Exterior Area: 43.0 m<sup>2</sup>

##### LOFT

Interior Area: 39.4 m<sup>2</sup>

Perimeter Wall Length: 18.3 m

Perimeter Wall Thickness: 71 cm

Exterior Area: 52.4 m<sup>2</sup>

##### BASEMENT (Below Grade)

Interior Area: 32.8 m<sup>2</sup>

Perimeter Wall Length: 24.3 m

Perimeter Wall Thickness: 31 cm

Exterior Area: 40.2 m<sup>2</sup>

# 10323 Highway 62, Sterling, ON

## Property Details

### Room Measurements

#### GARAGE

Garage: 6.80m x 7.00m | 44.2 m<sup>2</sup>

#### GARAGE 2ND FLOOR

Loft: 7.00m x 5.63m | 28.7 m<sup>2</sup>

Storage: 4.14m x 2.17m | 6.7 m<sup>2</sup>

### Floor Area Information

#### Detached Garage

##### GARAGE

Interior Area: 46.9 m<sup>2</sup>

Perimeter Wall Length: 28.2 m

Perimeter Wall Thickness: 20 cm

Exterior Area: 52.6 m<sup>2</sup>

##### GARAGE 2ND FLOOR

Interior Area: 40.5 m<sup>2</sup>

Perimeter Wall Length: 26.9 m

### Total Above Grade Floor Area

Main Building Interior: 212.9 m<sup>2</sup>

**Main Building Exterior: 251.2 m<sup>2</sup>**

Detached Garage Interior: 87.4 m<sup>2</sup>

**Detached Garage Exterior: 52.6 m<sup>2</sup>**