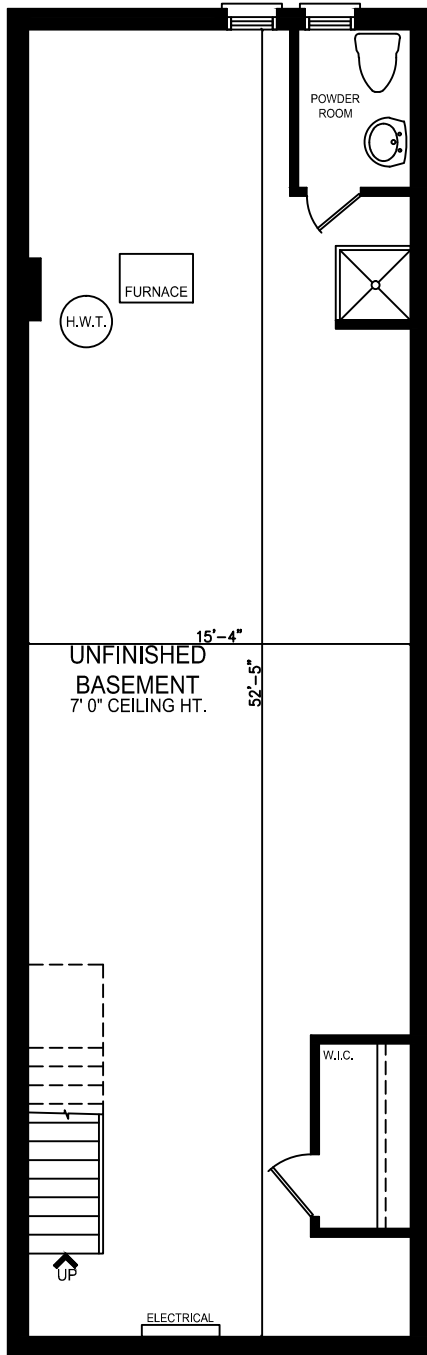
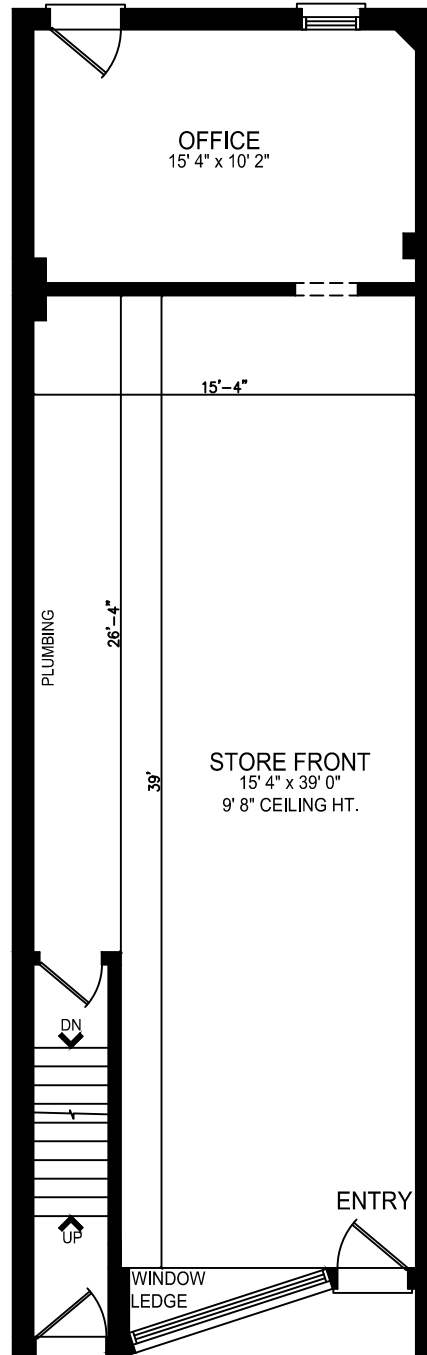


783 Annette Street

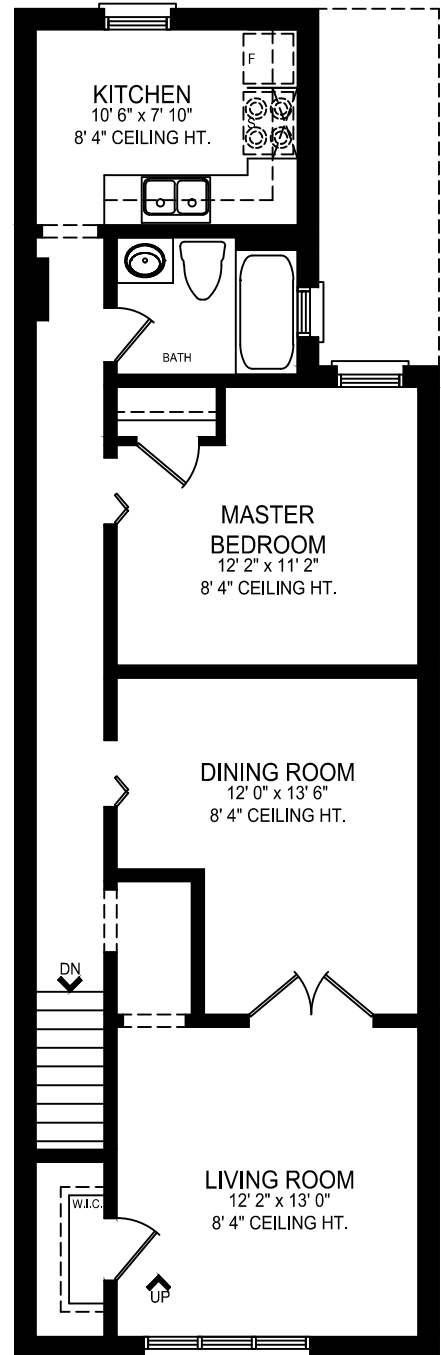
Approx. 1,745 sq.ft.
Including Basement Approx. 2,665 sq.ft.



BASEMENT FLOOR PLAN
APPROX. 920 SQ.FT.



GROUND FLOOR PLAN
APPROX. 895 SQ.FT.



SECOND FLOOR PLAN
APPROX. 850 SQ.FT.