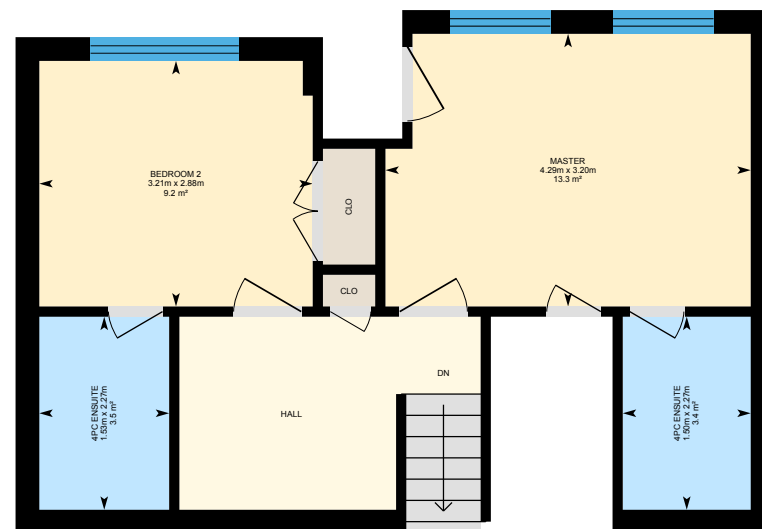
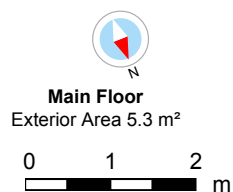
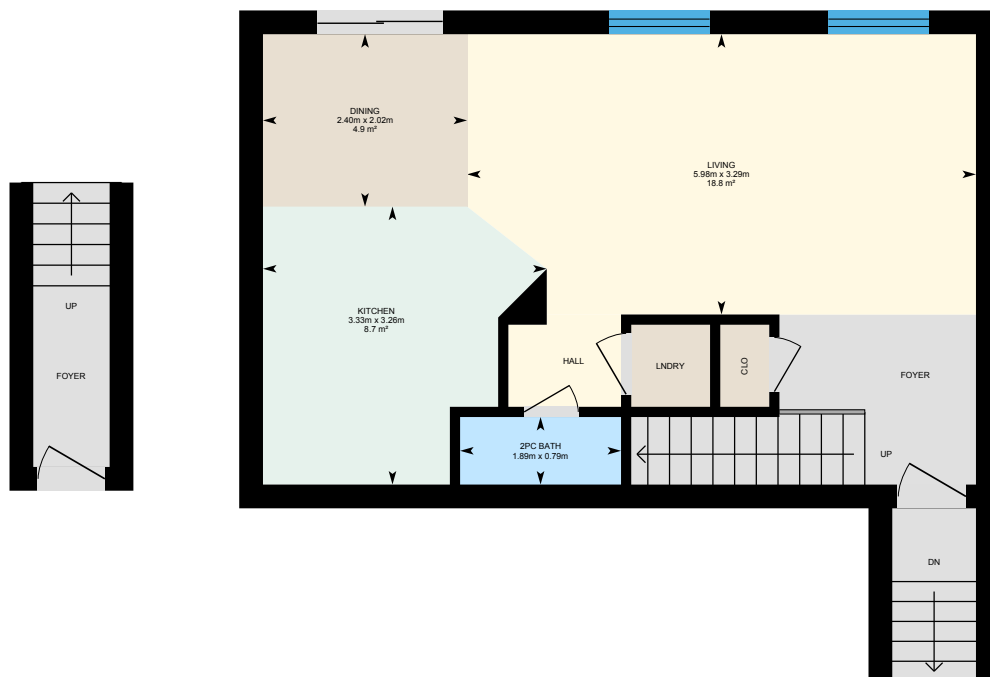


# 2243 Bur Oak Ave, Markham, ON

Main Building: Total Exterior Area Above Grade 108.6 m<sup>2</sup>



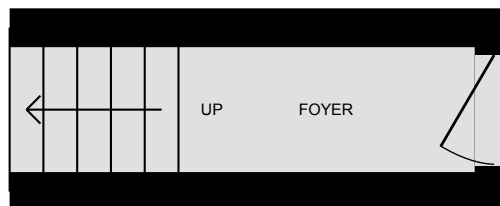
**1st Floor**  
Exterior Area 55.4 m<sup>2</sup>

**2nd Floor**  
Exterior Area 48.0 m<sup>2</sup>



# 2243 Bur Oak Ave, Markham, ON

**Main Floor** Total Exterior Area 5.3 m<sup>2</sup>  
Total Interior Area 3.0 m<sup>2</sup>



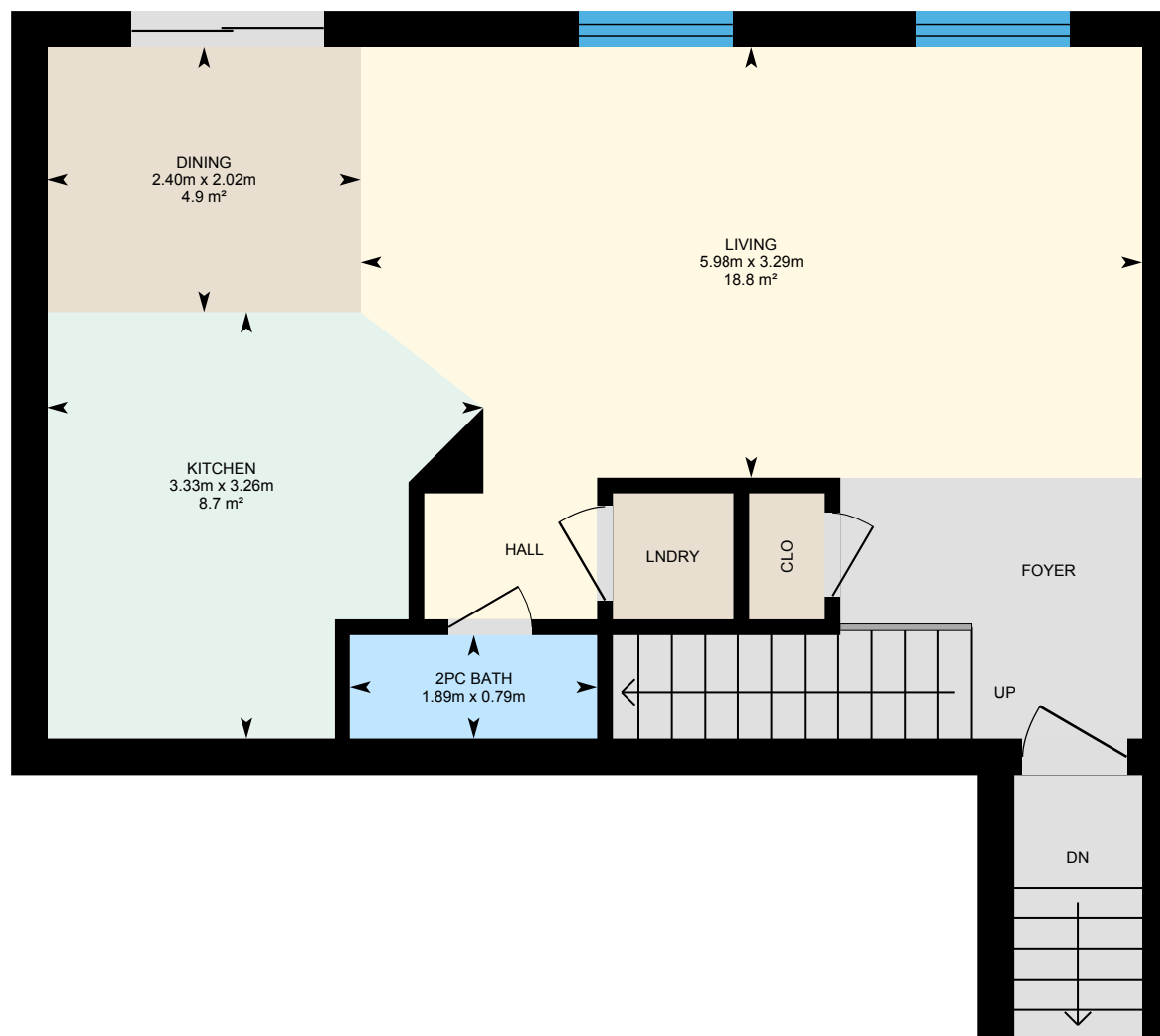
0 1 2 m

PREPARED: Jul, 2019



# 2243 Bur Oak Ave, Markham, ON

**1st Floor** Total Exterior Area 55.4 m<sup>2</sup>  
Total Interior Area 46.6 m<sup>2</sup>



0 1 2 m

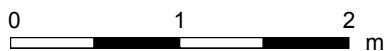
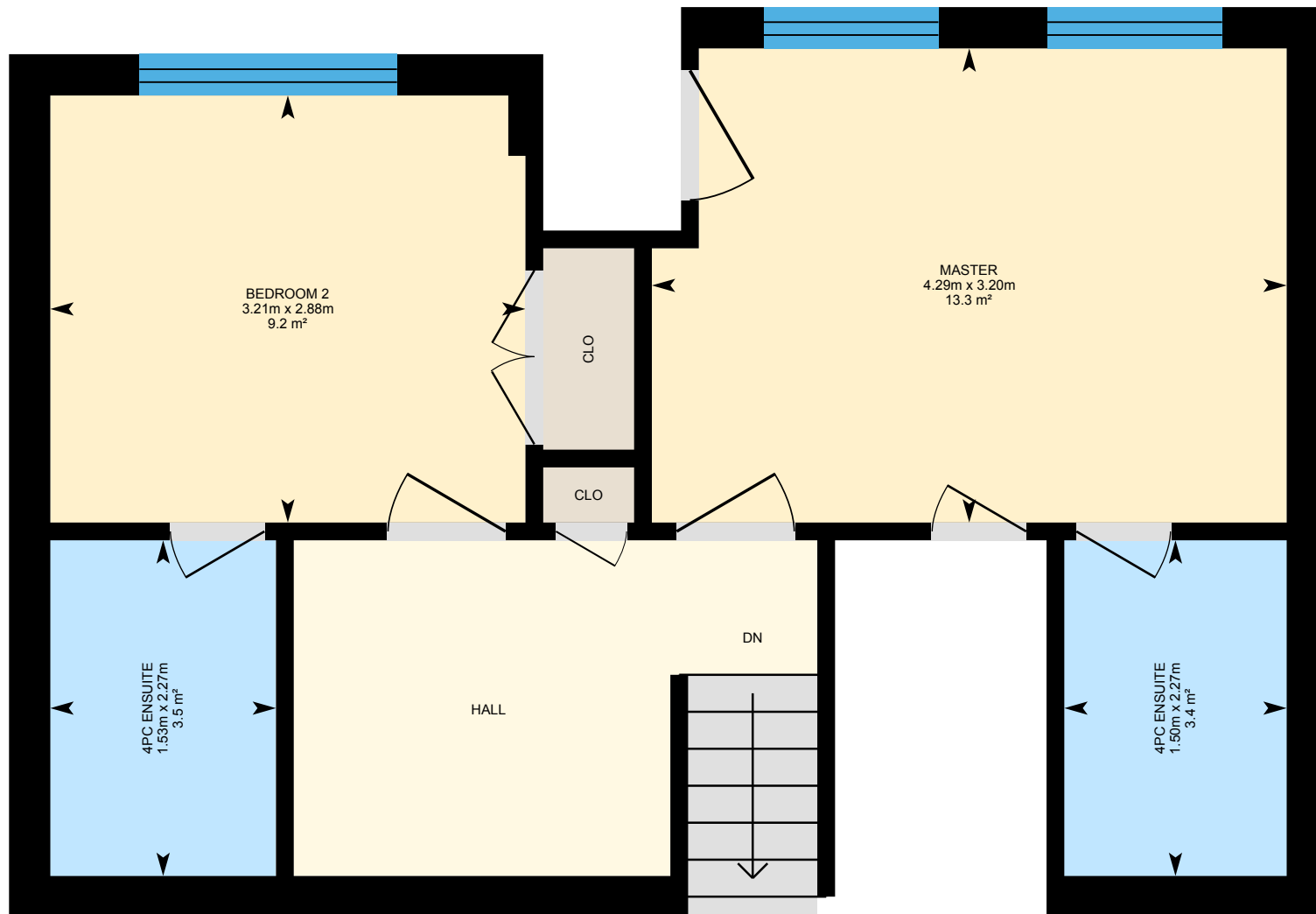
PREPARED: Jul, 2019



White regions are excluded from total floor area. All room dimensions and floor areas must be considered approximate and are subject to independent verification. For method of measurement please see <https://youriguide.com/measure/>.

# 2243 Bur Oak Ave, Markham, ON

2nd Floor    Total Exterior Area 48.0 m<sup>2</sup>  
Total Interior Area 41.0 m<sup>2</sup>



PREPARED: Jul, 2019

White regions are excluded from total floor area. All room dimensions and floor areas must be considered approximate and are subject to independent verification. For method of measurement please see <https://youriguide.com/measure/>.



# 2243 Bur Oak Ave, Markham, ON

## Property Details

### Room Measurements

Only major rooms are listed. Some listed rooms may be excluded from total interior floor area (e.g. garage). Room dimensions are largest length and width; parts of room may be smaller. Room area is not always equal to product of length and width.

#### Main Building

##### 1ST FLOOR

2pc Bath: 1.89m x 0.79m | 1.5 m<sup>2</sup>  
Dining: 2.40m x 2.02m | 4.9 m<sup>2</sup>  
Kitchen: 3.33m x 3.26m | 8.7 m<sup>2</sup>  
Living: 5.98m x 3.29m | 18.8 m<sup>2</sup>

##### 2ND FLOOR

4pc Ensuite: 1.53m x 2.27m | 3.5 m<sup>2</sup>  
4pc Ensuite: 1.50m x 2.27m | 3.4 m<sup>2</sup>  
Bedroom 2: 3.21m x 2.88m | 9.2 m<sup>2</sup>  
Master: 4.29m x 3.20m | 13.3 m<sup>2</sup>

### Floor Area Information

For explanation of floor area calculations and method of measurement please see <https://youriguide.com/measure/>.

#### Main Building

##### MAIN FLOOR

Interior Area: 3.0 m<sup>2</sup>  
Perimeter Wall Length: 8.1 m  
Perimeter Wall Thickness: 28 cm  
Exterior Area: 5.3 m<sup>2</sup>

##### 1ST FLOOR

Interior Area: 46.6 m<sup>2</sup>  
Perimeter Wall Length: 31.5 m  
Perimeter Wall Thickness: 28 cm  
Exterior Area: 55.4 m<sup>2</sup>

##### 2ND FLOOR

Interior Area: 41.0 m<sup>2</sup>  
Perimeter Wall Length: 25.1 m  
Perimeter Wall Thickness: 28 cm  
Exterior Area: 48.0 m<sup>2</sup>

#### Total Above Grade Floor Area

Main Building Interior: 90.5 m<sup>2</sup>  
**Main Building Exterior: 108.6 m<sup>2</sup>**