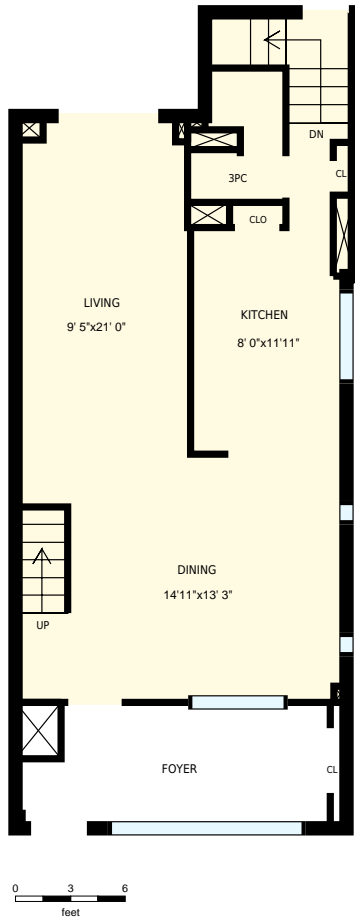
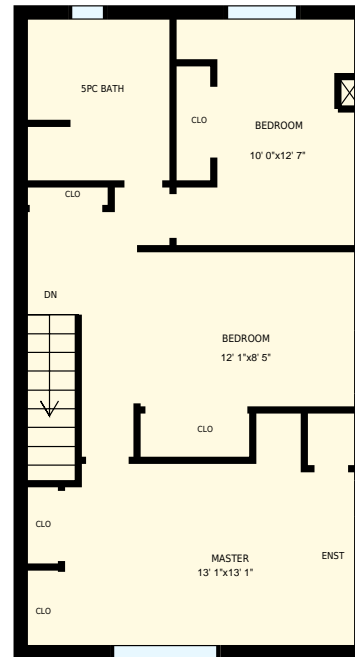


233 Monarch Park Ave, Toronto, ON

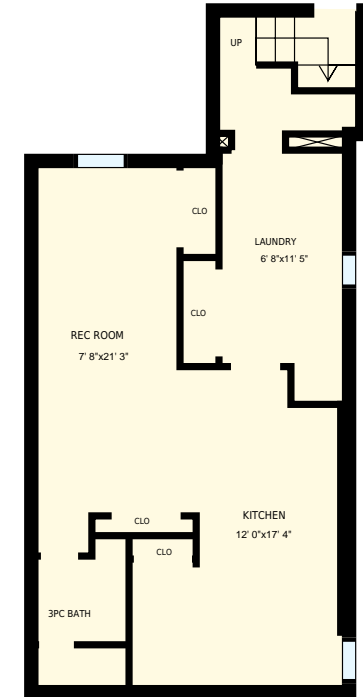
Total Exterior Area Above Grade 1446 sq. ft



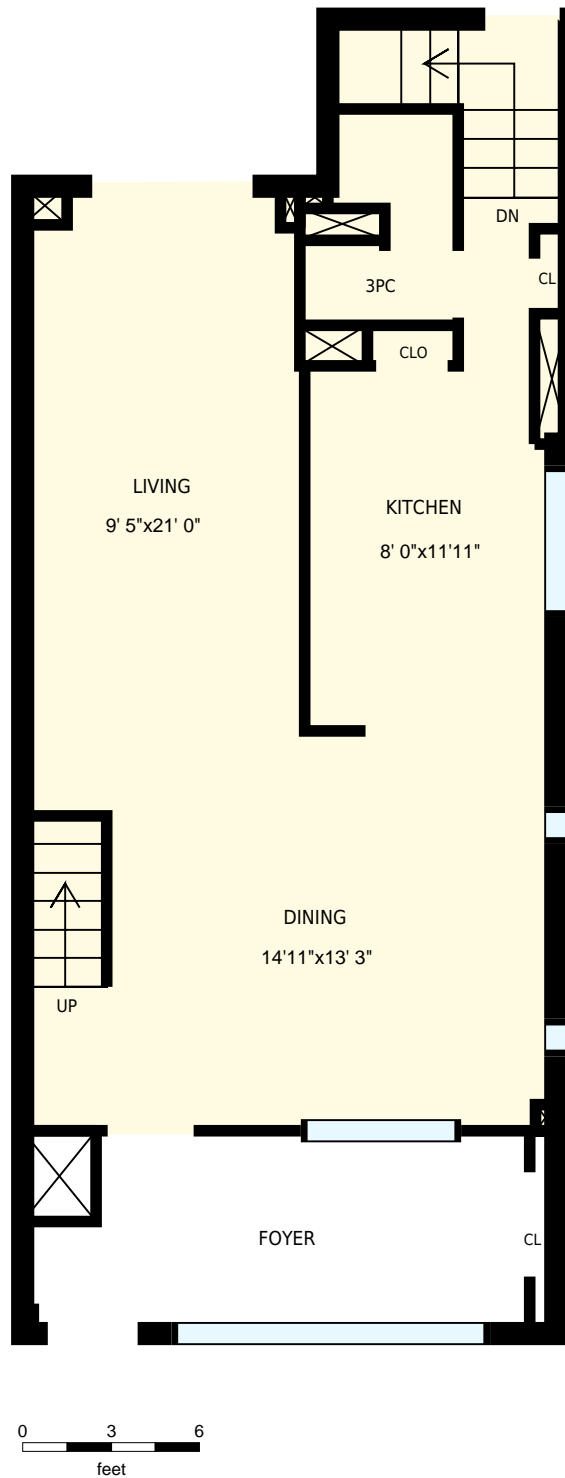
Main floor
Exterior Area 715 sq. ft



2nd floor
Exterior Area 730 sq. ft



Basement




233 Monarch Park Ave, Toronto, ON

PREPARED FOR:

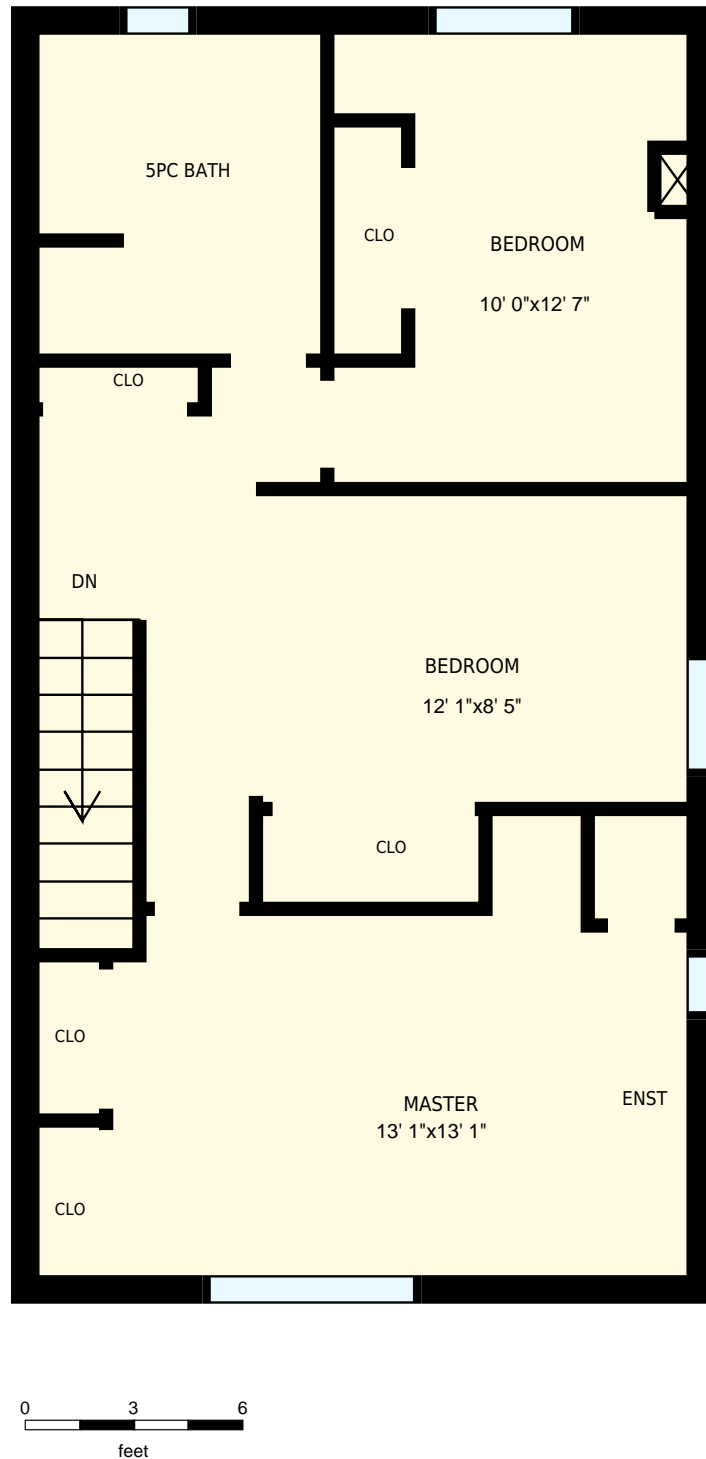
Main floor

Interior Area 623 sq. ft
Exterior Area 715 sq. ft

 Included Area

PREPARED ON:
Oct, 2016

All rooms dimensions and floor areas must be considered approximate and are subject to independent verification. For method of measurement please see <https://youriguide.com/measure/>.




233 Monarch Park Ave, Toronto, ON

PREPARED FOR:

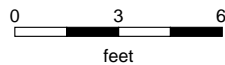
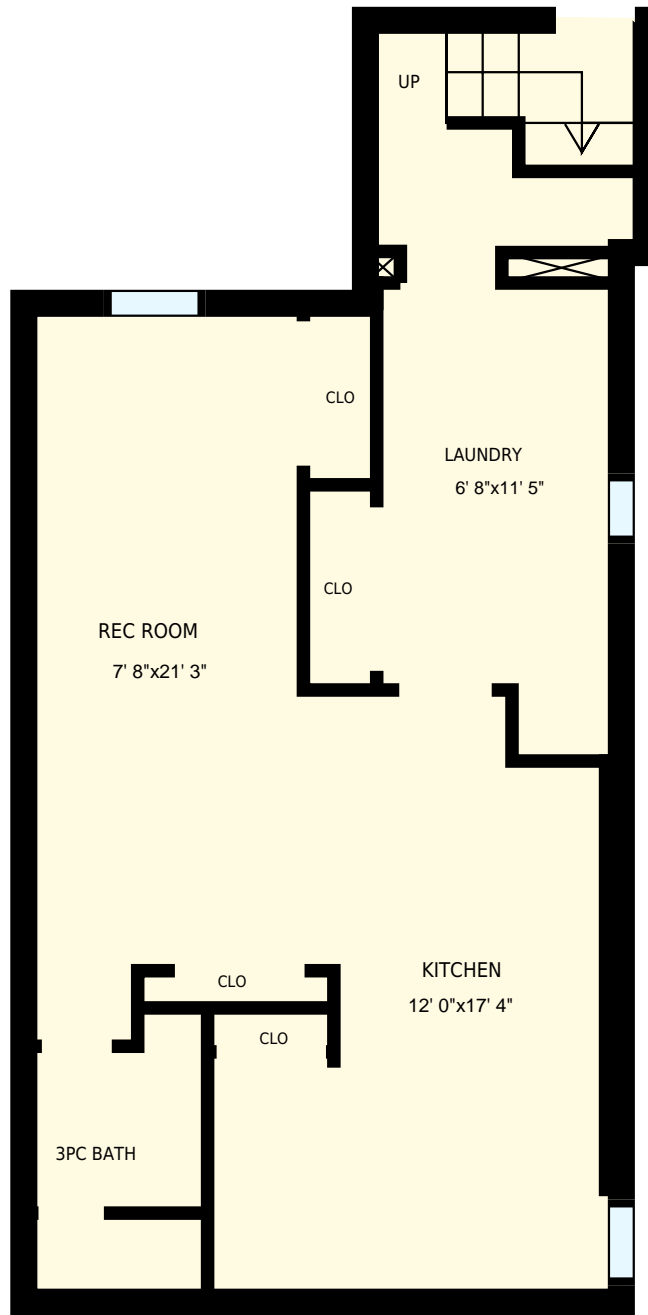
2nd floor

Interior Area 643 sq. ft
Exterior Area 730 sq. ft

 Included Area

PREPARED ON:
Oct, 2016

All rooms dimensions and floor areas must be considered approximate and are subject to independent verification. For method of measurement please see <https://youriguide.com/measure/>.




233 Monarch Park Ave, Toronto, ON

PREPARED FOR:

Basement

Interior Area 562 sq. ft
Exterior Area

 Included Area

PREPARED ON:
Oct, 2016

All rooms dimensions and floor areas must be considered approximate and are subject to independent verification. For method of measurement please see <https://youriguide.com/measure/>.