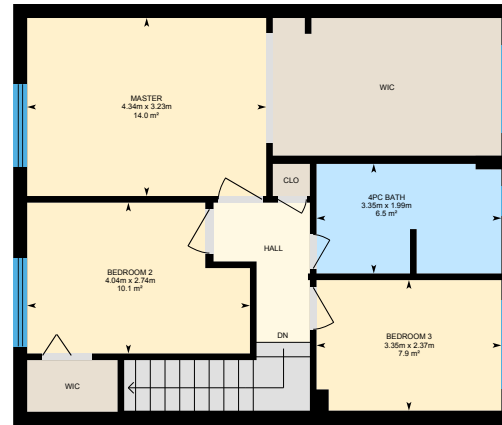


# 3052 Northview Crescent, Burlington, ON

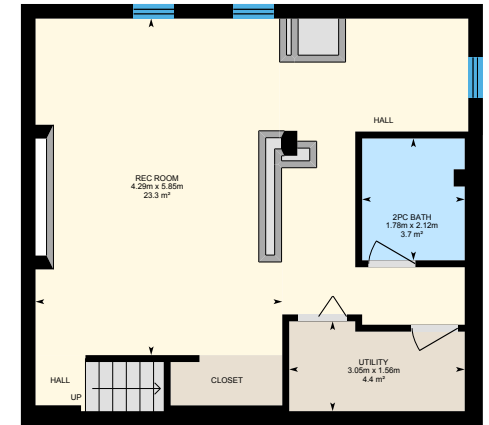
Main Building: Total Exterior Area Above Grade 150.1 m<sup>2</sup>



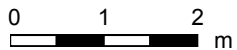
**Main floor**  
Exterior Area 80.5 m<sup>2</sup>



**2nd floor**  
Exterior Area 69.5 m<sup>2</sup>



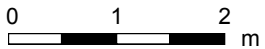
**Lower Level (Below Grade)**  
Exterior Area 57.6 m<sup>2</sup>



PREPARED: Apr, 2019

# 3052 Northview Crescent, Burlington, ON

Main floor Total Exterior Area 80.5 m<sup>2</sup>  
Total Interior Area 70.8 m<sup>2</sup>

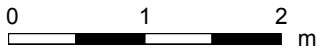
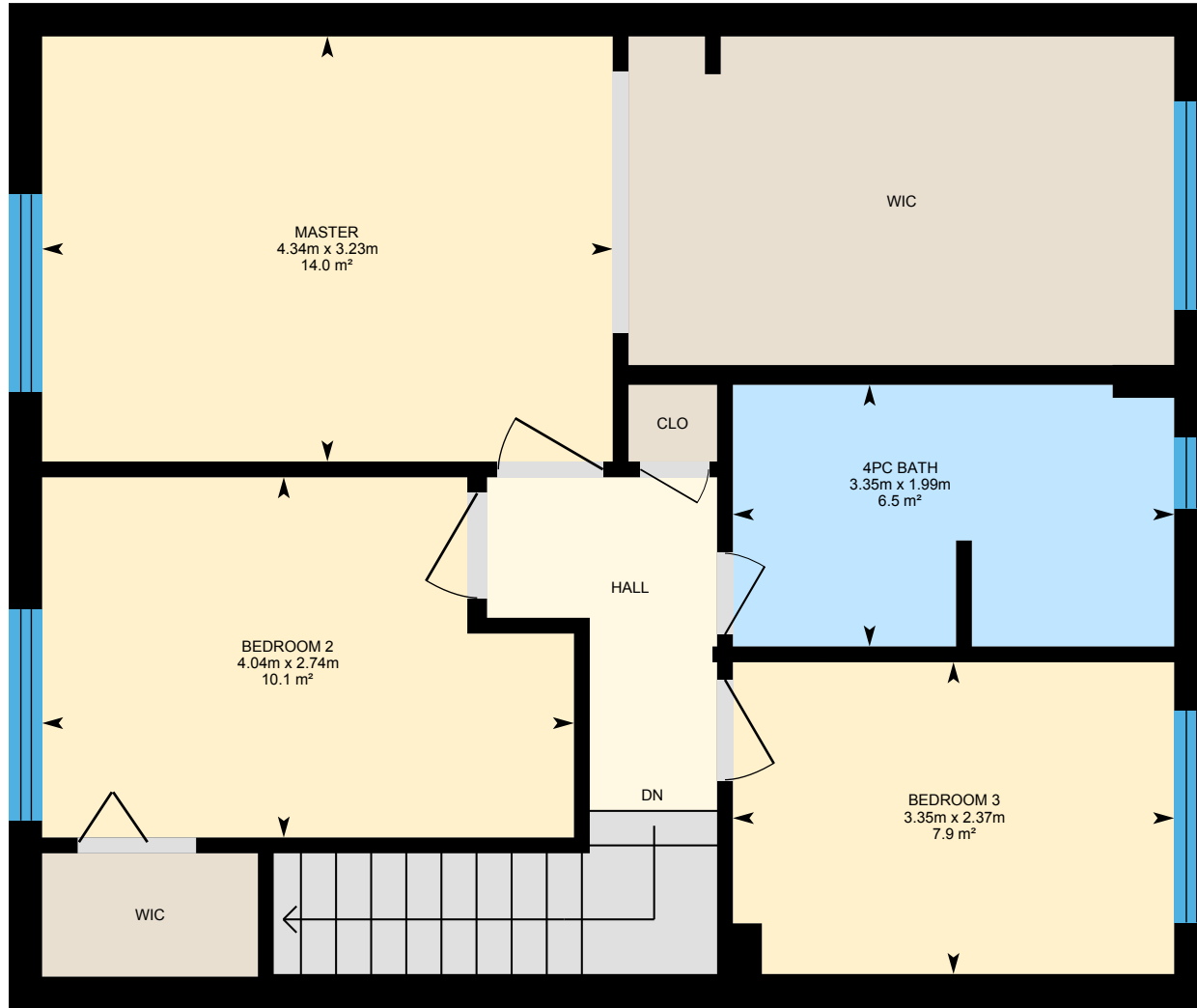


PREPARED: Apr, 2019

White regions are excluded from total floor area. All room dimensions and floor areas must be considered approximate and are subject to independent verification. For method of measurement please see <https://youriguide.com/measure/>.

# 3052 Northview Crescent, Burlington, ON

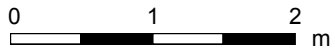
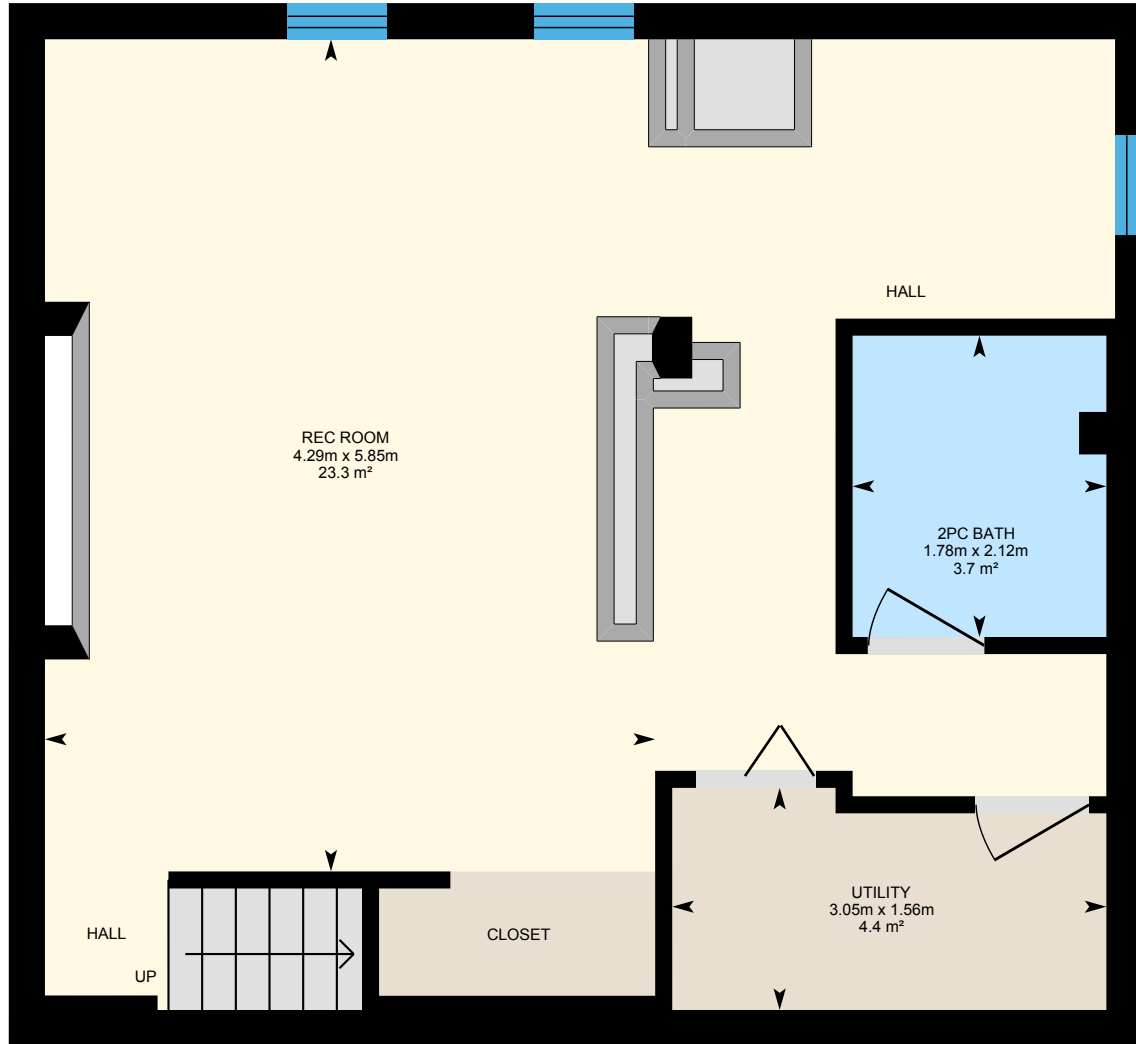
2nd floor Total Exterior Area 69.5 m<sup>2</sup>  
Total Interior Area 61.3 m<sup>2</sup>



PREPARED: Apr, 2019

# 3052 Northview Crescent, Burlington, ON

Lower Level Total Exterior Area 57.6 m<sup>2</sup>  
Total Interior Area 50.0 m<sup>2</sup>



PREPARED: Apr, 2019

White regions are excluded from total floor area. All room dimensions and floor areas must be considered approximate and are subject to independent verification. For method of measurement please see <https://youriguide.com/measure/>.

# 3052 Northview Crescent, Burlington, ON

## Property Details

### Room Measurements

Only major rooms are listed. Some listed rooms may be excluded from total interior floor area (e.g. garage). Room dimensions are largest length and width; parts of room may be smaller. Room area is not always equal to product of length and width.

### Main Building

#### MAIN FLOOR

2pc Bath: 2.59m x 1.23m | 3.2 m<sup>2</sup>  
Dining: 3.38m x 2.89m | 9.6 m<sup>2</sup>  
Garage: 4.78m x 3.13m | 14.4 m<sup>2</sup>  
Kitchen: 3.23m x 4.03m | 12.7 m<sup>2</sup>  
Laundry: 2.48m x 3.16m | 6.8 m<sup>2</sup>  
Living: 4.52m x 4.34m | 19.6 m<sup>2</sup>

#### 2ND FLOOR

4pc Bath: 3.35m x 1.99m | 6.5 m<sup>2</sup>  
Bedroom 2: 4.04m x 2.74m | 10.1 m<sup>2</sup>  
Bedroom 3: 3.35m x 2.37m | 7.9 m<sup>2</sup>  
Master: 4.34m x 3.23m | 14.0 m<sup>2</sup>

#### LOWER LEVEL

2pc Bath: 1.78m x 2.12m | 3.7 m<sup>2</sup>  
Rec Room: 4.29m x 5.85m | 23.3 m<sup>2</sup>  
Utility: 3.05m x 1.56m | 4.4 m<sup>2</sup>

### Floor Area Information

For explanation of floor area calculations and method of measurement please see <https://youriguide.com/measure/>.

### Main Building

#### MAIN FLOOR

Interior Area: 70.8 m<sup>2</sup>  
Perimeter Wall Length: 38.4 m  
Perimeter Wall Thickness: 25 cm  
Exterior Area: 80.5 m<sup>2</sup>

#### 2ND FLOOR

Interior Area: 61.3 m<sup>2</sup>  
Perimeter Wall Length: 32.5 m  
Perimeter Wall Thickness: 25 cm  
Exterior Area: 69.5 m<sup>2</sup>

#### LOWER LEVEL (Below Grade)

Interior Area: 50.0 m<sup>2</sup>  
Perimeter Wall Length: 30.4 m  
Perimeter Wall Thickness: 25 cm  
Exterior Area: 57.6 m<sup>2</sup>

### Total Above Grade Floor Area

Main Building Interior: 132.1 m<sup>2</sup>  
**Main Building Exterior: 150.1 m<sup>2</sup>**