

DEPARTMENT OF GEOGRAPHY & ENVIRONMENTAL ENGINEERING

3 RESEARCH CENTERS

CENTER FOR THE STUDY OF CIVIL-MILITARY OPERATIONS

CENTER FOR LANGUAGES, CULTURES, & REGIONAL STUDIES

CENTER FOR ENVIRONMENTAL AND GEOGRAPHIC STUDIES

MISSION

To enhance the intellectual, character, and military development of all cadets within the context of a core course in physical geography, a 3 course environmental engineering sequence, 4 majors, and a diverse offering of elective courses all while supporting the continued development of faculty and staff.

Climate Change Impacts - Alaska



CONTACT:
GEO: CPT(P) Alex Pytlar
EV: CPT(P) Chelsea Linvill
GIS: MAJ Jordan Laughlin



Helicopter Landing Zone Analysis

GEOLOGY FIELD COURSE



4 MAJORS



PHYSICAL / HUMAN / ENVIRONMENTAL GEOGRAPHY



ENVIRONMENTAL ENGINEERING



ENVIRONMENTAL SCIENCE



GEOGRAPHIC INFORMATION SYSTEMS



Find your passion in :

GEOGRAPHY

People & Planet



AIAD - Africa



AIAD - Israel



AIAD - Iceland

HUMAN

EMPHASIS ON GLOBAL & REGIONAL CULTURE

KEYWORDS:

CULTURE
REGIONAL STUDIES
GLOBALIZATION

HUMAN – ENVIRONMENT

HUMAN INTERACTION WITH THE NATURAL WORLD

KEYWORDS:

NATURAL RESOURCES
ENVIRONMENT
DEVELOPMENT

PHYSICAL

UNDERSTAND THE LANDSCAPE & ATMOSPHERE

KEYWORDS:

CLIMATE
LANDFORMS
NATURAL HAZARDS

CONTACTS: Geography Program Director – LTC Christopher Fuhrman or Geography Program DAC – CPT Alexander Pytlar

Environmental Engineering

• Environmental Science • Intro to Environmental Engineering Design • EV Chemistry • Hydrogeology/Hydraulic Systems • Biochemical Treatment

Environmental Engineering Design • Solid & Hazardous Waste Treatment • 2 Field Electives

Calculus II & Engineering Math • Thermal Fluid Systems I • Chemistry II and Physics II



• Environmental Biological Systems • Water Resources Planning and Design • Air Pollution Engineering • Physical and Chemical Treatment •

Environmental Engineering

The application of science and engineering principles to protect human health and minimize adverse effects of human activities on the environment.

Who should study EV Engineering?

Cadets who see themselves developing engineered solutions to environmental challenges, including water pollution, air pollution, and climate change. Environmental engineers are leading the creation of a sustainable and resilient future.

Who should I talk to?!

EV Engineering: LTC Andrew Pfluger
andrew.pfluger@westpoint.edu

EV Program DAC: CPT Chelsea Q Linvill
chelsea.linvill@westpoint.edu

[Visit Our Website](#)

Environmental Science

• Aquatic Science • Physical Geology • Ecology • Chemistry II • Biology • Meteorology/Climatology • Geography of Global Cultures •

Environmental Security • 3-Course EV Engineering Sequence

2 EV Depth Electives • 2 EV Science Field Electives • EV Tools Elective



EV388A: Physical Geology

Standing on the Shawangunk Quartz-Pebble Conglomerate

Looking over the Great Valley, stretching from Maine to Pennsylvania



Environmental Science

An integrative, holistic science-based study of how humans influence and are affected by the biological, chemical, and physical processes which shape the environment with the goal of minimizing environmental degradation and working towards sustainability.

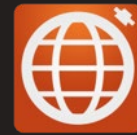
Who should study EV Science?

Cadets who like science, care about the outdoors and the preservation of natural resources and want to understand the difficult environmental challenges of today.

Who should I talk to?!

EV Science: COL Mindy Kimball
mindy.kimball@westpoint.edu
 EV Program DAC: CPT Chelsea Q Linvill
chelsea.linvill@westpoint.edu

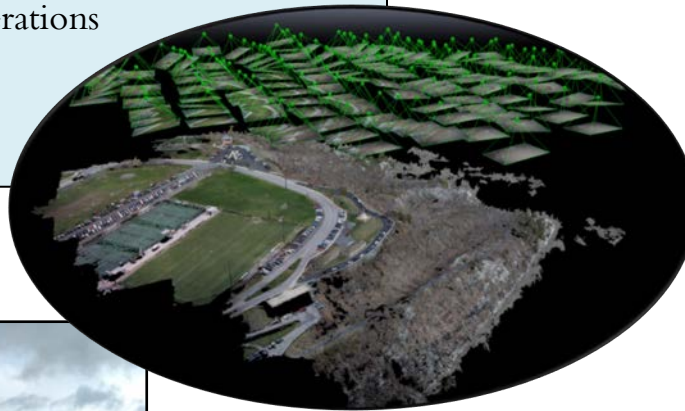
[Visit Our Website](#)



GIS Courses

- EV377 – Remote Sensing
- EV378 – Cartography
- EV398 – Geographic Information Systems
- EV477 – Advanced Remote Sensing
- EV498 – Advanced Geographic Information Systems
- EV478 – Geospatial Military Operations
- EV379 – Photogrammetry
- EV380 – Principles of Surveying
- EV482 – Military Geography

Collect, Analyze, Visualize problems through a lens that considers physical relationships and spatial distribution



Point of Contacts:

[MAJ Jordan Laughlin](#), x3136
[MAJ Krystle Harrell](#), x0207

Our Partners

