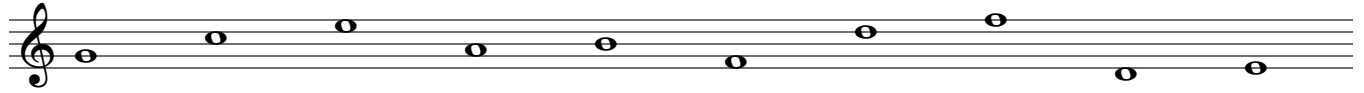


# M.A.P Theory Placement

Name: \_\_\_\_\_ Score: \_\_\_\_\_ Level: \_\_\_\_\_

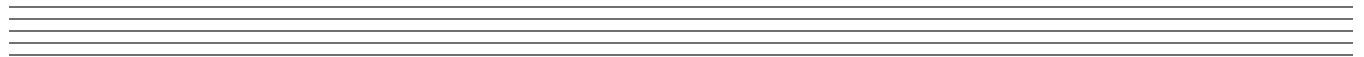
A. Write the letter names below the following notes: (P-A)



B. How many beats per measure are indicated by the following time signatures? (P-B)



C. Draw the musical symbols below as indicated: (P-C)

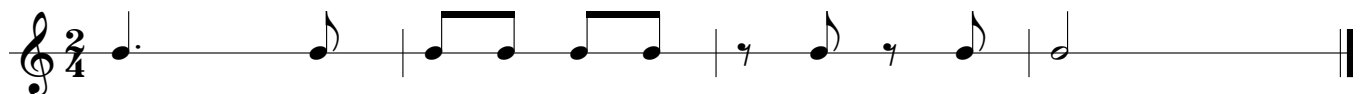
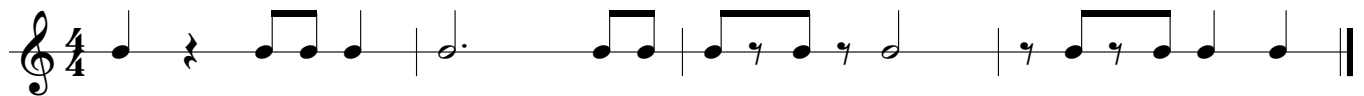
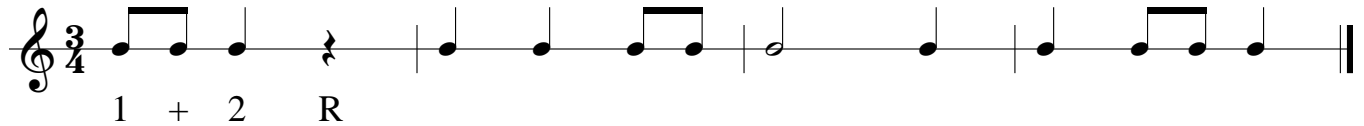


1. sharp      2. quarter note      3. bass clef      4. measure      5. whole rest



6. flat      7. treble clef      8. half note      9. half rest      10. whole note

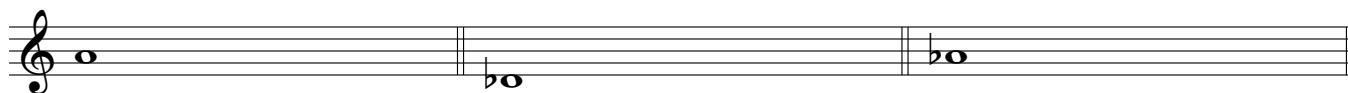
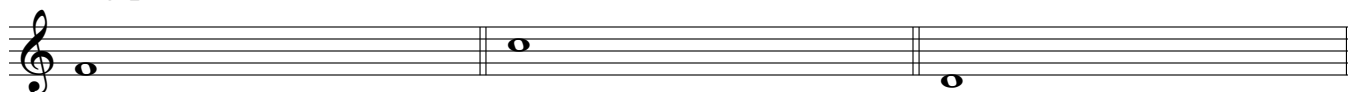
D. Write the counting below the following rhythms: (P-E)



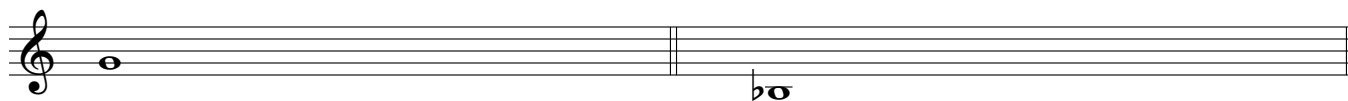
E. Write the ENHARMONIC note next to each of the following notes: (1-C)



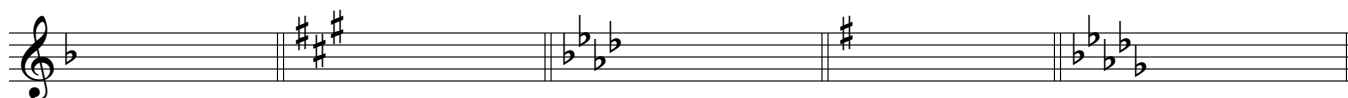
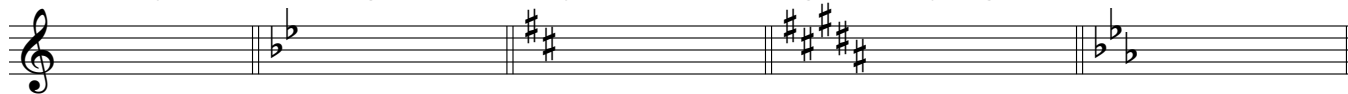
F. Build ascending MAJOR tetrads (1st 4 notes of a Major scale) from the given starting pitches: (1-D)



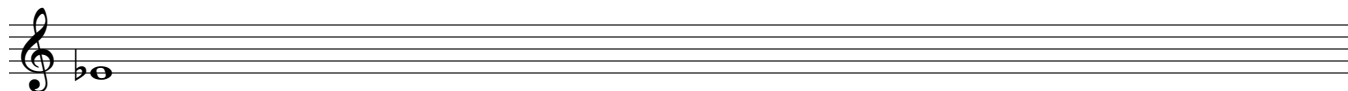
G. Using the pitches below, build ascending MAJOR SCALES with key signatures or accidentals: (1-E)



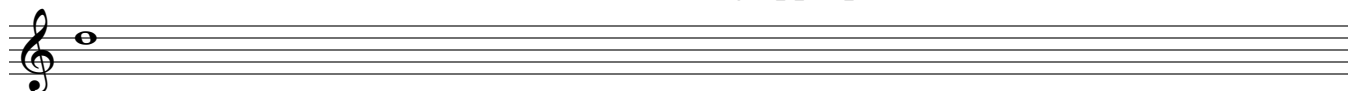
H. Identify the following MAJOR keys based on the given key signatures: (2-A)



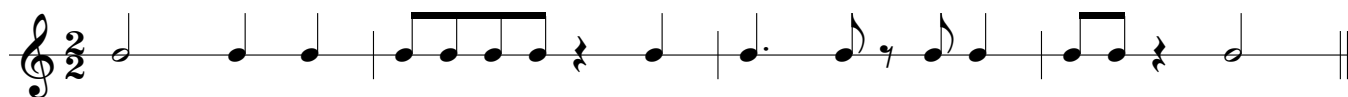
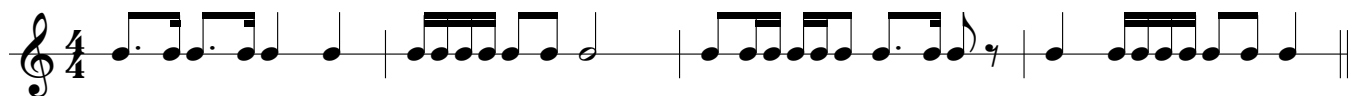
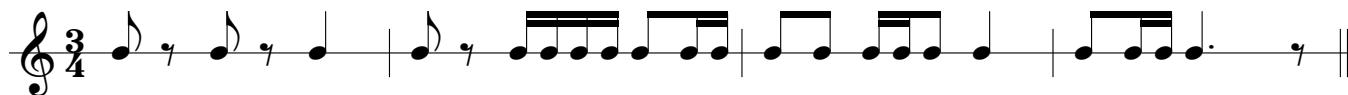
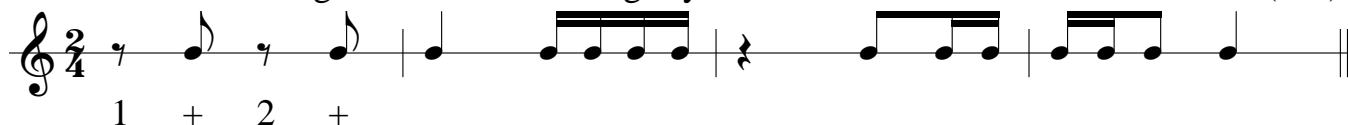
I. Write an ASCENDING chromatic scale using appropriate accidentals: (2-D)



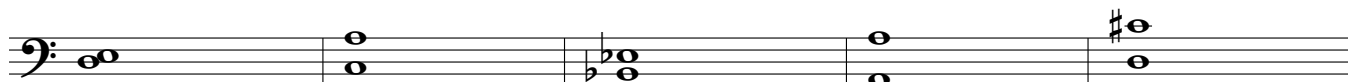
J. Write an DESCENDING chromatic scale using appropriate accidentals:



K. Write the counting below the following rhythms: (2-F)



L. Identify these intervals by type (maj., min., perf., aug., dim.) and size (2nd, 4th, octave, etc.): (3-D)



M. Add notes ABOVE the given notes to complete the intervals indicated: (3-D)

Exercise M consists of two staves of musical notation. The top staff is in treble clef and contains five measures, each with a single note and an interval label below it: 'perf. 4' (C4), '# min. 2' (D#4), 'maj. 6' (G4), 'perf. octave' (C5), and 'min. 6' (F#4). The bottom staff is in bass clef and contains five measures, each with a single note and an interval label below it: 'perf. 5' (C3), 'aug. 2' (D#3), 'min. 7' (G2), 'maj. 7' (F#3), and 'min. 3' (E3).

N. Write the counting in SLOW time under each note and rest below: (3-E)

Exercise N consists of two staves of musical notation. The top staff is in treble clef with a 6/8 time signature and contains three measures: the first has four quarter notes with counts '1 2 3 4-5-6' below; the second has a quarter note followed by a quarter rest and a quarter note; the third has a quarter note followed by a quarter rest and a quarter note. The bottom staff is in treble clef with a 3/8 time signature and contains three measures: the first has a quarter note followed by a quarter note and a quarter note; the second has a quarter note followed by a quarter rest and a quarter note; the third has a quarter note followed by a quarter note and a quarter note.

O. Fill in the missing note to complete each of the following MAJOR triads: (3-F)

Exercise O consists of two staves of musical notation in 2/2 time. The top staff is in treble clef and contains five measures, each with two notes and a label below: 'Ab' (A-flat), 'E' (E), 'C' (C), 'Db' (D-flat), and 'D' (D). The bottom staff is in bass clef and contains five measures, each with two notes and a label below: 'Bb' (B-flat), 'G' (G), 'F' (F), 'Eb' (E-flat), and 'A' (A).

P. Identify the following MINOR keys based on the given key signatures: (4-B)

Exercise P consists of two staves of musical notation in treble clef. The top staff shows four key signatures: B-flat major (two flats), D-flat major (three flats), B major (two sharps), and D major (two sharps). The bottom staff shows four key signatures: B-flat major (two flats), D-flat major (three flats), B major (two sharps), and D major (two sharps).