

CMI Praise Band Track – Audition Information

Auditions are approximately 10 minutes long and consist of two (2) parts:

- I. Playing/singing alone
- II. Playing/singing with faculty

VOCALISTS

- I. **ALONE - Things we are listening for:** *your voice: intonation, diction and rhythm.* We will want to hear your range and ability to “own” a song. You can sing alone or with a backing track you’ve brought.
- II. **WITH FACULTY - Things we are listening for:** *your ability to sing harmony with a faculty member and/or hold a melody while a faculty member harmonizes with you.* Be prepared to sing at least two of the songs provided.

INSTRUMENTALISTS

- I. **ALONE – Things we are listening for:** *to hear how you play and read chord charts/lead sheets.* We will ask you to demonstrate different styles in your playing to showcase what you feel you do best.
- II. **WITH FACULTY -** The chord charts/lead sheets below will be used at the audition representing various degrees of difficulty. **Things we are listening for:** *basic chord accuracy, style and timing while reading the chart.*

(Full details of the Praise Band Track auditions can be found on the next page.)

CMI Praise Band Track – Audition Information (Detailed)

VOCALISTS

1. Bring one (1) prepared piece to perform. You can bring your own CD to sing along with or sing by yourself.
2. Be prepared to sing the songs below with a faculty member in harmony and as the lead singer.
3. Be flexible. You may be asked to sight sing a song. Don't worry: we're not expecting you to sing it perfectly. We just want to see how your ear functions, the size of your range, and your ability to learn on the fly.
4. Relax. Have fun!

INSTRUMENTALISTS

1. Bring one (1) prepared piece to perform. While it's important that you demonstrate your own abilities here, it's also advisable to select music which also highlights your ability to mimic the styles typically performed from a praise band. In other words, we don't want to hear you shred... we want to know that you can complement other instruments and play stylistically.
2. Be prepared to play the songs below with a faculty member. Learn your respective part. We want to evaluate your ability to play a part, as well as, your ability to imitate and simplify parts if needed.
3. Be prepared for variety.
 - a. GUITAR - Show a variety of abilities: chords, melodic solo lines (if lead player), effect styles (if electric player), fast and slow.
 - b. BASS - K.I.S.S. (Keep It Simple, Sam.) Support the sound of the band by simplifying parts. Demonstrate your ability to enhance 'the pocket', not challenge it.
 - c. KEYS – Imitate what you would hear on the radio (Piano, Organ, Synth Pad, Strings). Show off versatility and flexibility. Don't play busy...play tastefully.
 - d. DRUMS - Play tight (not fancy) grooves, in time without speeding up or slowing down. In addition, we want to see your ability to play at different dynamic levels and maintain a consistent tempo.
4. Relax. Have fun!

How Great Is Our God

Key - C

Words and Music by

Chris Tomlin, Jesse Reeves and Ed Cash

Verse 1

C **Am7**
The splendor of the King clothed in majesty
F2
Let all the earth re-joice all the earth rejoice
C **Am7**
He wraps Himself in light and darkness tries to hide
F2
And trembles at His voice and trembles at His voice

Chorus

C
How great is our God sing with me
Am7 **Fmaj7**
How great is our God and all will see how great
G **C2**
How great is our God

Verse 2

C **Am7**
And age to age He stands and time is in His hands
F2
Beginning and the End Beginning and the End
C **Am7**
The Godhead three in one Father Spirit Son
F2
The Lion and the Lamb the Lion and the Lamb

Bridge

C **Am7**
Name above all names worthy of all praise
Fmaj7 **G** **C**
My heart will sing how great is our God

CCLI Song # 4348399

© 2004 sixsteps Music | worshiptogether.com songs | Wondrously Made Songs
For use solely with the SongSelect Terms of Use All rights reserved www.ccli.com
CCLI License # 1321380

How Great Is Our God

Words and Music by
Chris Tomlin, Jesse Reeves
and Ed Cash

$\text{♩} = 76$

VERSE

C

Am⁷



1. The splen - dor of the King, clothed in maj - es - ty;
(2 And) age to age He stands, and time is in His hands;

F²



Let all the earth re-joyce, all the earth re-joyce. He wraps
Be - gin - ning and the End, Be - gin - ning and the End. The God -



Him - self in light, and dark-ness tries to hide, and trem-bles at His voice,
- head, three in one, Fa - ther, Spir - it, Son, the Li - on and the Lamb,

CHORUS



and trem-bles at His voice. How great is our God! Sing with me: How
the Li - on and the Lamb.



great is our God! And all will see how



great, how great is our God!

1. BRIDGE
2. C

20

2. And

Name a - bove _____ all names, _____

24 Am⁷ Fmaj⁷ 1
G

24

wor - thy of _____ all praise _____

My heart will sing: _____ How great _____

is our God! ..

28 C 2.
G C D.S. al Fine

28

_____ is our God! _____

How great

Come Now Is The Time To Worship

Words and Music by Brian Doerksen

Key - D

Chorus

D Dsus D
Come now is the time to wor - ship
A Em G
Come now is the time to give your heart
D Dsus D
Come just as you are to wor - ship
A Em G
Come just as you are be - fore your God
D
Come

Verse 1

G D
One day every tongue will con - fess You are God
G D
One day every knee will bow
G Bm
Still the greatest treasure re - mains for those
G A
Who gladly choose You now

Verse 2

G D
Willing we choose to sur - render our lives
G D
Willing our knees will bow
G Bm
With all our heart soul mind and strength
G A
We gladly choose You now

Ending

D
Come come just as you are come come

Come Now Is The Time To Worship

Words and Music by
Brian Doerksen

$\text{♩} = 98$ **CHORUS**

D

D^{SUS}

D



Come, now is the time _____ to wor- -ship. _____

5

A

Em

G



Come, now is the time _____ to give _____ your _____ heart. _____

9

D

D^{SUS}

D



Come, just as you are _____ to wor- -ship. _____

13

A

Em

G



Come, just as you are _____ be-fore _____ your _____ God. _____

Last time to Coda \oplus

VERSE

17

D

G

D



Come.

1 One day ev - 'ry tongue will con-fess _____ You are God. _____

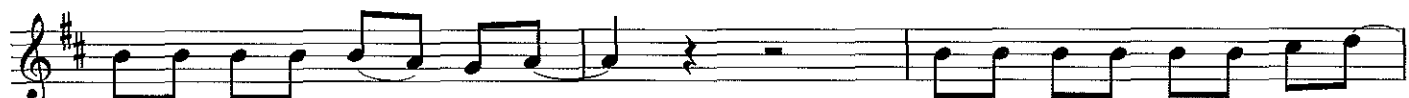
2 Will - ling - ly we choose to sur-ren - - der our lives. _____

21

G

D

G



One day ev - 'ry knee _____ will bow. _____

Will - ing - ly our knees _____ will bow. _____

Still, the great - est treas - ure re - mains _____

With all our heart, _____ soul, _____ mind, _____

CCLI Song # 2430948

© 1998 Vineyard Songs (UK/Eire)

For use solely with the SongSelect Terms of Use All rights reserved www.ccli.com

CCLI License # 1321380

24 Bm G A D C. al Coda

— for — those — who glad - - ly — choose — You now. —
— and — strength — we glad - - ly — choose — You now. —

⊕ Coda
D

ENDING

28 D

Come.

Come.

Come,

33

just as you are, ————— come.

Come

Open The Eyes Of My Heart

Words and Music by Paul Baloche

Key - E

Chorus

E5
Open the eyes of my heart Lord
B/D#
Open the eyes of my heart
A2/C# A2
I want to see You
Esus E (Esus)
I want to see You

Verse

B C#m
To see You high and lifted up
A2 Bsus
Shining in the light of Your glory
B C#m
Pour out Your power and love
F#m11 Bsus
As we sing holy holy holy

Bridge

E5
Holy holy holy
B/D#
Holy holy holy
A2/C# A2
Holy holy holy
Esus E (Esus)
I want to see You

CCLI Song # 2298355

© 1997 Integrity's Hosanna! Music

For use solely with the SongSelect Terms of Use All rights reserved www.ccli.com

CCLI License # 1321380

Open The Eyes Of My Heart

Words and Music by
Paul Baloche

$\text{♩} = 112$ **CHORUS**
E⁵ B/D#

O - pen the eyes _ of my heart, _ Lord, _ o - pen the eyes _ of my heart;

4 A²/C# A² E^{sus} E

_ I want to see You, _ I want to see You. _

8 **VERSE**
1, 3. E^{sus} 2, 4. B C#m

To see You high and lift - ed up, _ shin -

12 A² B^{sus} B

- ing in the light of Your glo - - ry. _ Pour out Your pow'r and love; _

15 C#m F#m11 B^{sus} 1. D.C

_ As we sing ho - ly, ho - ly, ho - - ly. _

19 **BRIDGE**
2. E⁵ B/D#

_ Ho - ly, ho - ly, ho - - ly, _ ho - ly, ho - ly, ho -

23

A²/C# A²

- ly; — Ho - ly, ho - ly, ho - - ly, — I want to

26

1. E^{SUS} E E^{SUS} repeat as desired 2. E^{SUS} E

see You _____ sec You _____

Your Grace Is Enough

Words and Music by **Matt Maher**

Key - G

Verse 1

G G/B C
Great is Your faithfulness O God
Em G/B C
You wrestle with the sinner's restless heart
G G/B C
You lead us by still waters into mercy
Em G/B C
And nothing can keep us a - part

Pre-Chorus

Am G/B Cmaj7 D
(So) re - member Your people re - member Your children
Em D G/B C
Re - member Your prom - ise O God

Chorus 1

G D
Your grace is e - nough
Em7 C
Your grace is e - nough
G D C
Your grace is e - nough for me

Verse 2

G G/B C
Great is Your love and justice God of Jacob
Em G/B C
You use the weak to lead the strong
G G/B C
You lead us in the song of Your salvation
Em G/B C
And all Your people sing a - long

CCLI Song # 4477026

© 2003 Thankyou Music | spiritandsong.com

For use solely with the SongSelect Terms of Use All rights reserved www.ccli.com

CCLI License # 1321380

Your Grace Is Enough - 2

Chorus 2

Yeah Your ^G grace is e- ^Dnough

Heaven ^{Em7} reaches out to ^C us

Your ^G grace is e- ^Dnough for ^C me

God I sing Your ^G grace is e- ^Dnough

I'm ^{Em7} covered in Your ^C love

Your ^G grace is e- ^Dnough for ^C me for ^G me

Ending

|| G | Dsus | Em7 | C :|| G |

Your Grace Is Enough

Words and Music by
Matt Maher

$\text{♩} = 116$ VERSE

G

G/B

C



1. Great is ___ Your faith- - ful-ness, _ O God; ___
2. Great is ___ Your love ___ and jus - tice, God ___ of Ja - cob;

5

Em

G/B

C



You wres - tle with ___ the sin - ner's rest - - less heart. ___
You use ___ the weak ___ to lead ___ the strong ___

9

G

G/B

C



You lead ___ us by ___ still wa - ters in - - to mer - cy
You lead ___ us in ___ the song ___ of Your ___ sal - va - tion,

13

Em

G/B

C



and noth - ing can ___ keep us ___ a - part. ___ So, re -
and all ___ Your peo - - ple sing ___ a - long. ___

PRE-CHORUS

17

Am

G/B

Cmaj⁷

D



-mem - ber ___ Your peo - ple, ___ re - mem - ber ___ Your chil - dren, ___ re -

21

Em

D

G/B

C



-mem - ber ___ Your prom - ise ___ O ___ God. ___ Your

CHORUS 1

25 G D Em⁷ C

grace is e-nough, — Your grace is e-nough — Your

29 G D C

grace is e-nough, — for — me — Your

1. 2. D.S.

PRE-CHORUS

34 Am G/B Cmaj⁷

— Re - mem - ber — Your peo - ple, — re - mem - ber — Your

3.

38 D Em D/F# G C

chil - dren, — re - mem - ber — Your prom - ise — O — God. — Your

CHORUS 1

43 G D Em⁷ C

grace is e-nough, — Your grace is e-nough — Your

47 G D C

grace is e-nough, — for — me. — Yeah, Your

CHORUS 2

51 G D Em⁷ C

grace is e-nough; ___ heav - en reach - es out ___ to us. ___ Your
 grace is e-nough; ___ I'm cov - ered in ___ Your love. ___ Your

55 G D C C

grace is e-nough ___ for ___ me. ___ God, ___ I sing: ___ Your ___
 grace is e-nough ___ for ___ me, ___

ENDING

60 G D^{sus} Em⁷

___ for ___ me ___

64 C G D^{sus}

67 Em⁷ C G

Everlasting God

Key - Bb

Words and Music by Brenton Brown and Ken Riley

Verse

B \flat B \flat sus B \flat
Strength will rise as we wait upon the Lord

B \flat sus B \flat
We will wait upon the Lord

B \flat sus B \flat
We will wait upon the Lord

B \flat sus B \flat
Strength will rise as we wait upon the Lord

B \flat sus B \flat
We will wait upon the Lord

B \flat sus B \flat
We will wait upon the Lord

Pre-Chorus

B \flat /D E \flat B \flat /D E \flat F Gm F
Our God You reign for - ev - er

B \flat /D E \flat B \flat /D E \flat F Gm F
Our Hope our strong De - liv - 'er

Chorus

B \flat B \flat /D E \flat
You are the everlast - ing God

Gm
The everlasting God

E \flat
You do not faint You won't grow weary

B \flat B \flat /D E \flat
You're the defender of the weak

Gm
You comfort those in need

E \flat (B \flat) (Last time)
You lift us up on wings like eagles

Instrumental

| B \flat | | | B \flat /D E \flat | |

CCLI Song # 4556538

© 2005 Thankyou Music

For use solely with the SongSelect Terms of Use. All rights reserved. www.ccli.com

CCLI License # 1321380

Everlasting God

Words and Music by
Brenton Brown and Ken Riley

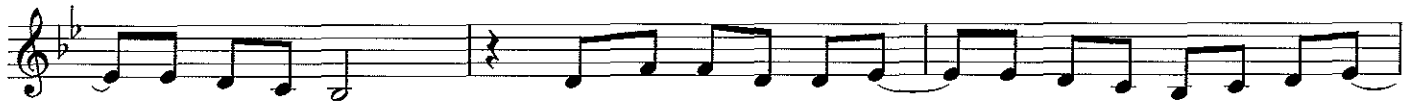
♩=100 **VERSE**
B♭



Strength will rise as we wait ___ up-on the Lord, we will wait ___ up-on the Lord, we will wait ___

B♭sus B♭ B♭sus B♭ B♭sus

4



___ up - on the Lord. Strength will rise as we wait ___ up - on the Lord, we will wait ___

B♭ B♭sus B♭ B♭sus

PRE-CHORUS

7



___ up - on the Lord, we will wait ___ up - on the Lord Our God, ___ You reign ___

B♭ B♭sus B♭ B♭/D E♭ B♭/D E♭

10



___ for - ev - er. Our Hope, ___ our strong ___ De - liv -

F Gm F B♭/D E♭ B♭/D E♭ F Gm

CHORUS

14



- 'rer. ___ You are ___ the ev - er - last - ing God, ___

F B♭ B♭/D E♭

18



___ the ev - er - last - ing God, ___ You do ___ not faint, ___ You

Gm

22 Eb Bb Bb/D Eb

won't grow weary. You're the de-fend-er of the weak,.

26 Gm

— You com-fort those in need. You lift us up on

30 Eb Bb

wings like ea-gles. ea-gles.

1. 2. INSTRUMENTAL

35 Bb/D Eb Bb/D Eb Bb/D Eb

Our God, You reign

PRE-CHORUS

40 F Gm F Bb/D Eb Bb/D Eb F Gm

— for-ev-er Our Hope, our strong De-liv-

44 F Bb Bb/D Eb

-'rer. You are the ev-er-last-ing God,.

CHORUS

48 Gm

— the ev-er-last-ing God, You do not faint, You

52 Eb Bb Bb/D Eb

won't grow wea - ry. — You're the — de - fend - - er of — the weak, -

Detailed description: This block contains the first line of music, measures 52 through 55. The key signature has two flats (Bb and Eb). The melody is written on a treble clef staff. Chord changes are indicated above the staff: Eb at measure 52, Bb at measure 53, Bb/D at measure 54, and Eb at measure 55. The lyrics are: "won't grow wea - ry. — You're the — de - fend - - er of — the weak, -".

56 Gm

— You com - - fort those — in need. — You lift — us up — on

Detailed description: This block contains the second line of music, measures 56 through 59. The key signature remains two flats. The melody continues on the treble clef staff. A Gm chord is indicated above the staff at measure 56. The lyrics are: "— You com - - fort those — in need. — You lift — us up — on".

60 Eb Bb

wings like ea - gles. — ea - gles. —

Detailed description: This block contains the third line of music, measures 60 through 63. The key signature remains two flats. The melody is on the treble clef staff. Chord changes are indicated: Eb at measure 60 and Bb at measure 63. A first ending bracket labeled '1.' spans measures 61 and 62, and a second ending bracket labeled '2.' spans measure 63. The lyrics are: "wings like ea - gles. — ea - gles. —".