

# Territorial Youth Chorus

## Sight Singing

### Rhythmic Sight-reading

[Clap the rhythms below.]

1 2

Exercise 1: A single staff in 4/4 time. It begins with a box containing the number '1'. The rhythm consists of four quarter notes, followed by a group of four eighth notes beamed together, and then a half note. Exercise 2: A single staff in 3/4 time. It begins with a box containing the number '2'. The rhythm consists of four quarter notes, followed by a quarter rest, then a dotted quarter note, and finally a half note.

3 4

Exercise 3: A single staff in 4/4 time. It begins with a box containing the number '3'. The rhythm consists of four groups of eighth notes: the first two groups are beamed together, and the last two are separated by a quarter rest. Exercise 4: A single staff in 4/4 time. It begins with a box containing the number '4'. The rhythm consists of four groups of eighth notes: the first and third groups are beamed together, and the second and fourth groups are separated by a quarter rest. There are also '3' markings above the first and third groups.

### Pitch matching

[Sing the examples below using neutral syllable (i.e. "la"), numbers or Solfeggio.]

1 2

Exercise 1: A single staff in 4/4 time. It begins with a box containing the number '1'. The melody consists of four quarter notes: C4, D4, E4, and F4. Exercise 2: A single staff in 4/4 time. It begins with a box containing the number '2'. The melody consists of four quarter notes: G4, A4, B4, and C5.

3 4

Exercise 3: A single staff in 3/4 time. It begins with a box containing the number '3'. The melody consists of four quarter notes: C4, D4, E4, and F4. Exercise 4: A single staff in 3/4 time. It begins with a box containing the number '4'. The melody consists of four quarter notes: G4, F4, E4, and D4.

# Territorial Youth Chorus

## Audition Requirements – Alto, Bass

[Sing using neutral syllable (i.e. "la"), numbers or Solfeggio.]

B $\flat$  Major Scale



D Natural Minor Scale



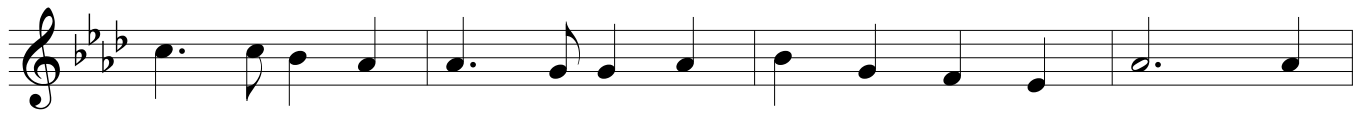
## America the Beautiful



O beau - ti - ful for spa - cious skies, For am - ber waves of grain, For



pur - ple moun - tain maj - es - ties A - bove the fruit - ed plain! A -



mer - i - ca, A - mer - i - ca, God shed his grace on thee, And



crown thy good with bro - ther-hood From sea to shin - ing sea.

# Territorial Youth Chorus

## Sight Singing - Parts

[Sing your part using neutral syllable (i.e. "la"), numbers or Solfeggio.]

Moderato ♩ = 76

*mp*

Soprano  
Alto

Tenor  
Bass

Musical notation for Tenor and Bass parts, measures 1-8.

S  
A

T  
B

Musical notation for Tenor and Bass parts, measures 9-16.

*cresc.*

S  
A

T  
B

*mf*

Musical notation for Tenor and Bass parts, measures 17-24.

S  
A

T  
B

Musical notation for Tenor and Bass parts, measures 25-32.