

FY2021 ANNUAL REPORT

The Salvation Army Midland Division Greater St. Louis Region



DOING THE MOST GOOD®

A MESSAGE FROM OUR AREA COMMANDER



Dear Friends,

The Salvation Army is privileged to serve the people of the Greater St. Louis Region. Because of the support of our many generous donors, we provide physical, social, emotional, and spiritual support to people who desperately need hope. In this report, you will read about people whose lives have been impacted by the holistic programs offered by The Salvation Army.

Thank you for your continued support. You play an essential role in helping us build hope in St. Louis and the surrounding areas. May God bless you richly.

Your partner in service,

A handwritten signature in black ink, appearing to be 'KJ' followed by a long horizontal stroke.

MAJOR KJELL T. STEINSLAND
General Secretary and St. Louis Regional Commander

GREATER ST. LOUIS REGION FY2021 ADVISORY BOARD

EXECUTIVE COMMITTEE

Kay Bradley
Chair

Felipe Cuartas
Olin Fellow

Bryan Lundstrom
Finance Chair

John Wuest
*Government Affairs
Chair*

Mark Abels
Vice Chair

Robert Cullen
*Leadership Development
Chair*

Shawn Schukar
Development Chair

Roy Anderson, Jr.
*Marketing &
Communications Chair*

Colleen Dunn
Echelon President

Patrick Seamands
EDS Chair

Victor Baldinger
Property Chair

James Hoffmeister
Program Chair

Mike Sommer
*St. Charles County
Advisory Council Chair*

MEMBERS

G.S. Ahluwalia

Tim Eichholz

Sue McCarthy

Mark Schnuck

John Baltz

Dirk Elsperman

Amy McDermott

Harinder Singh

William J. Clark, IV

Ken Grapperhaus

Adam Menne

Cate Trende

Richard W. Cook

William Greenblatt

Todd Nye

Anthony Urban

Mark E. Dunn

Scott Malin

Steve Sainz

Michael Williams



Founded in 1865, The Salvation Army's work in 132 countries is coordinated by its International Headquarters in London, UK.

THE MIDLAND DIVISION

The Salvation Army Midland Division is headquartered in St. Louis, serving our neighbors in 150 counties in Missouri and southern Illinois.

TSA Midland operates:

- ♦ 19 Corps community centers
- ♦ 12 thrift stores
- ♦ 8 shelters for the unhoused
- ♦ 5 transitional housing programs
- ♦ 4 social service sites
- ♦ 3 low-income housing developments
- ♦ a gathering center known as the Kroc Center
- ♦ a senior residence facility
- ♦ an addiction treatment center

TSA Midland oversees the operations of over 100 volunteer-led Service Extension Units and runs summer camp at its 800-acre Camp Mihaska in Bourbon, MO.

THE GREATER ST. LOUIS REGION

This annual report focuses on the work being done in the 16 counties comprising the Greater St. Louis Region, serving individuals and families living in poverty, people living with or recovering from addiction, United States Veterans, and those experiencing homelessness.



A WARM SHELTER

Melissa Stemper had a heart attack at age 35, the start of a journey down a road of hardship, joined by her husband and four children.

The Salvation Army stepped in at this crucial moment to provide housing for the Stemper family. The family of six checked into Family Haven, the Salvation Army's family shelter, in 2021 at one of their life's low points. Their credit was wrecked, and they were evicted from their home after Melissa's health went downhill.

After a six-month stay at Family Haven, 10740 Page Blvd. in St. Louis, the family was able to move into their own housing with Stemper receiving disability insurance and her husband continuing to work.

"We ended up with Ms. Marie as our social worker there, who was absolutely wonderful," Stemper said. "They just kept telling us to work the program. You've just got to put a lot of hard work into it. So that's what we did."

She explained of their current situation,

"We're up on our feet, we're in our own home, doing things on our own. I've got my disability going here, my husband is working. But if it weren't for the shelter, we wouldn't have had that opportunity. We wouldn't have had anywhere to go, especially with our four children."



"My health has really stopped us in our tracks," she said. "I was a normal, happy, healthy 35-year-old, then I had an open-heart surgery. I have never been able to recover from that."

When the family arrived at Family Haven, she said, both kids and parents needed clothes and some assurance they would be safe at a living facility.

A good chance existed they might end up at the wrong place.

"When you uproot your children, it's difficult anywhere you go," she said. "You're scared because you still don't know if you have the security. You don't know if you're going to be in the same school six months from now. That's scary for children, going from living in your own home to cohabitating with other people and families."

Ironically, Melissa's kids found themselves fond of the time and wanting to return to visit after leaving Family Haven for the friends they made and the facility's accommodating staff.

Her counselor's spirit was often to support the faith, hope and optimism for the family, when their situation looked difficult to overcome.

"When you guys receive people into the homeless shelter, you're getting them at their worst moments in life," Melissa said. "So, there is not a whole lot of positivity coming from the person that's come. When I got there, I was very depressed. My whole life was over. We worked so very hard to be able to provide for our family."

She explained, "There is not a whole lot of pity. To have that there, to have somebody that will pray with you, that believes just as strongly as you do, that made a huge difference for me and my family because that's what you have to have, is hope and faith. You've got to have that to be able to do anything in life."

TRUE STRENGTH

Latoya Lee's 18-month journey to stay sober could inspire anyone who has persevered during tough times.

While attending meetings and treatment at The Salvation Army's Midtown Service and Treatment Center, Lee navigated drug courts and stayed sober during stressful times, even when confronted with some of life's darkest moments.

She is a parent now, clean and sober, to a young son, turning 1 soon.

"He's into everything," Latoya said. "It brings me back to what my grandma used to do with me. I catch myself doing those old school things with him."

Lee calls substance abuse a cruel trick on the mind that she overcame with difficult long-game planning. Stopping meant wanting to make the change for herself, instead of a directive from family members or a court.

Latoya lost a previous child while in rehab on Christmas during a pregnancy, she said.

"I shut down," Lee said of the time. "My spouse helped me through it. The people at The Salvation Army helped me through it. I talked about it. At first, I wouldn't open up about it because I was hurting. I was in so much pain. It was like my heart was hurting more than anything. I wanted to use bad. But I didn't because I had the support of my spouse and The Salvation Army. They were there for me if I reached out. I never stopped going to the Salvation Army after I lost my baby. If I would have stopped, I probably would have used."

This harrowing moment was a turning point in how Lee saw her own sobriety.

"Once I lost my baby, my eyes really opened," Latoya said. "It was like I didn't need to use no more to justify anything. I had to get into my head that using was only going to make my situation worse."

The Salvation Army's recovery support staff, led by Assistant Clinical Supervisor Holly Allen, helped create a pathway for Lee to get clean and move past what had been a long trudge of bad fortune. It meant daily updates, which Lee continued optionally after she had completed the program.

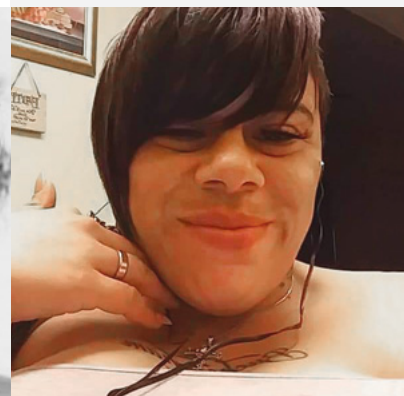
Lee's spouse was also a vital source of inspiration and clear planning, she said, motivating her to persist.

"She's been real supportive," Latoya said. "It's like when I do feel like using, and I let her know, she tells me, 'Is it worth it?'"

Asked for a favorite inspirational quotation, Latoya had a biblical verse, Philippians 4:13, without a second thought.

"I can do all things through Christ. His strength is me. I was always well grounded in God."

For more information about The Salvation Army's Midtown Service and Treatment Center and its services, visit centralusa.salvationarmy.org/midland/midtownSTC, email mid.STC@usc.salvationarmy.org, or call 314-652-3310.



SCAN FOR
MORE STORIES

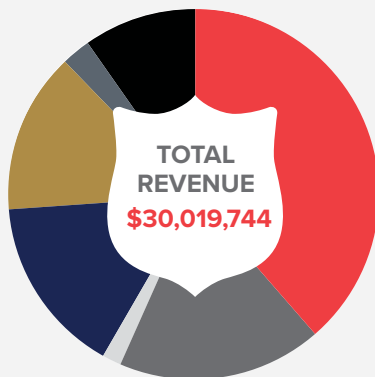


In FY2021, The Salvation Army Midland Division:

- ♦ Through its emergency services served 175,076 people, providing 201,502 meals, 42,837 nights of lodging, and \$2,508,935.97 in emergency financial assistance
- ♦ Provided 150,959 nights of lodging at its residential facilities in the Greater St. Louis Region
- ♦ At Christmas distributed 90,159 toys; 12,025 gifts; 9,732 food boxes; and 6,885 meals to 18,386 families
- ♦ Hosted 8,673 campers at Camp Mihaska



REVENUE & EXPENSES



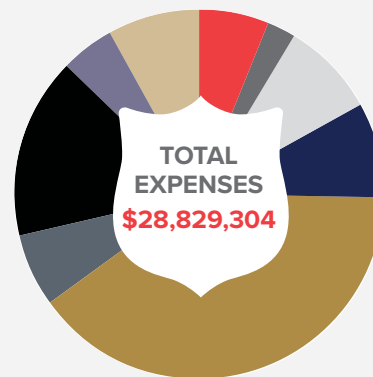
Total Public Support	\$11,633,285
Grants from Government Agencies	\$5,452,942
Other Revenue	\$466,131
Donated Rent	\$4,684,225
Donated Food	\$4,149,914
Donated Other	\$768,001
Income Trust/Endowment	\$2,865,246

PROGRAM SERVICES

Camp Mihaska	\$1,776,154
Special Services	\$780,253
Family Haven/Community in Partnership	\$2,345,756
Midtown Service & Treatment Center	\$2,396,107
Regional Corps Community Centers	\$11,485,210
Transitional Housing	\$1,854,403
Emergency Social Services	\$4,557,372
Total Program Services	\$25,195,255

SUPPORTING SERVICES

Management and General	\$1,381,219
Fundraising	\$2,252,830
Total Supporting Services	\$3,634,049



In FY2021, 87¢ of every dollar went directly to programs to care for our neighbors in the Greater St. Louis Region.

THE SALVATION ARMY MIDLAND DIVISION GREATER ST. LOUIS REGION

Midland Division Headquarters
1130 Hampton Ave. | St. Louis, MO 63139
(314) 646-3000 | salarmymidland.org

MIDLAND GREATER ST. LOUIS REGION CORPS COMMUNITY CENTERS

Alton

525 Alby St.
Alton, IL 62002

Euclid

2618 N. Euclid Ave.
St. Louis, MO 63113

Gateway

824 Union Rd.
St. Louis, MO 63123

Granite City

3007 E. 23rd St.
Granite City, IL 62040

Maplewood

7701 Rannells Ave.
St. Louis, MO 63143

O'Fallon

1 William Booth Dr.
O'Fallon, MO 63366

Saint Charles

2140 N. 4th St.
St. Charles, MO 63301

Saint Clair

20 Glory Pl.
Belleville, IL 62226

Temple

2740 Arsenal St.
St. Louis, MO 63118

MIDLAND GREATER ST. LOUIS REGION FACILITIES

3010 Apartments

3010 Washington Blvd
St. Louis, MO 63103

Alton Booth House

(scattered site)
525 Alby St.
Alton, IL 62002

Booth Manor

3131 Iowa Ave.
St. Louis, MO 63118

Camp Mihaska

1466 Hwy "N"
Bourbon, MO 65441

City Mission Collective

Missional Community of six
homes and network of community
gardens in Benton Park West

Family Haven, CIP

10740 Page Ave.
St. Louis, MO 63132

Ferguson Community Empowerment Center

9420 West Florissant Rd.
Ferguson, MO 63136

Midtown Service & Treatment Center

2900 Washington Blvd.
St. Louis, MO 63103

O'Fallon Lodge

1 William Booth Dr.
O'Fallon, MO 63366

The Railton

205 N. 18th St.
St. Louis, MO 63103

Veterans Residence

2933-35 Locust St.
St. Louis, MO 63103



DOING THE MOST GOOD®

The Salvation Army, an international movement, is an evangelical part of the universal Christian Church. Its message is based on the Bible. Its ministry is motivated by the love of God. Its mission is to preach the gospel of Jesus Christ and to meet human needs in His name without discrimination.