



2022
ANNUAL REPORT
Kent County, MI



DEAR FRIENDS,

As you review the contents of this annual report, you will note the thousands of lives that were touched by our many ministries last year in Kent County. Meeting people at their point of need and communicating the love of God through practical expressions of compassion is the mission of The Salvation Army.

It is a big job, and the needs will only increase as our community continues to grow and change. The past year was filled with challenges, including a winter storm that canceled the last two days of bell ringing during our annual Red Kettle Campaign. And yet, with your continued support and encouragement, The Salvation Army was able to continue to carry out our commitment of helping our Kent County neighbors in need.

We are grateful to share this 2022 annual report with you as a reflection of this commitment. Thank you for your continued support and generosity, both now and in the future.

MAY GOD BLESS YOU.

Major Timothy P. Meyer
Divisional Secretary for Grand
Valley Area Command

Dr. Veneese Chandler
Grand Rapids Advisory Board
Chair



LOVE BEYOND

2022 IMPACT

-  7,714 meals served to seniors
-  7,058 individuals provided groceries
-  6,677 people referred for housing support
-  3,983 personal care kits
-  1,674 in recovery outpatient services
-  971 households kept their lights on
-  778 kids attended summer day camps
-  713 life-saving detox experiences
-  433 short-term residential care visits
-  101 fresh starts on life through the ARC
-  86 families moved towards positive change

Christmas Assistance



1,006
teen gift
cards



13,868
toys



1,524
households
served



SOCIAL SERVICES

Most people associate The Salvation Army with Christmas and Red Kettles. Our Social Services Department serves your neighbors in need long after the holidays have ended. We have year-round programs that help with food, housing, and utility assistance, as well as those that help people break the cycle of poverty or struggle with substance use disorders.



Emergency Food Assistance

The Salvation Army operates as an emergency food bank in Kent County, which serves as a lifeline for many residents. Food for 5 days is provided in each grocery order. It also provides baby essentials, clothing, household products and personal care items, based on availability. The pantry is open Monday – Friday.

3,983 personal comfort kits

7,058 individuals provided groceries

Energy Assistance Services (EAS)

The Energy Assistance Program seeks to walk alongside households in need, to address energy crises. EAS offers assistance to qualifying households with a past-due notice or utility shutoff due to an inability to pay. Additionally, we help clients avoid a future crisis by providing financial literacy resources.

971 households assisted

Pathway of Hope

The Pathway of Hope initiative provides individualized services to families with children who want to break the cycle of poverty. By helping families overcome challenges like unemployment, unstable housing, and lack of education, we lead families down a path toward increased stability and self-sufficiency. Here in Kent County, the majority of those helped are single mothers with minor children.

86 families moved towards positive change

Housing Services

The Housing Assistance Program (HAP) serves as the coordinated entry point for all Kent County residents experiencing homelessness, and provides individualized case management. We work with a variety of community resources to prevent homelessness whenever we can, and rapidly re-house those who find themselves without housing.

316 family referrals

6,677 individual referrals



Christmas Assistance

During the hardest time of the year, we provide emotional and spiritual care to families, along with new, unwrapped toys and grocery store gift cards. This program relies heavily on businesses who collect toys and volunteers who help at our Christmas warehouse where families can receive gifts.

1,006 teen gift cards

1,524 households served

13,868 toys distributed

ERICKA'S STORY



At the age of 17, Ericka* was a single parent living in a women's homeless shelter. She was a gang member with addiction issues trying to get out of an abusive relationship. "Looking back on where I was then, I thought I would never see 21," she said.

For several years, Ericka continued to struggle and was living on the streets, until one day she realized that many of her former friends were dead or in prison.

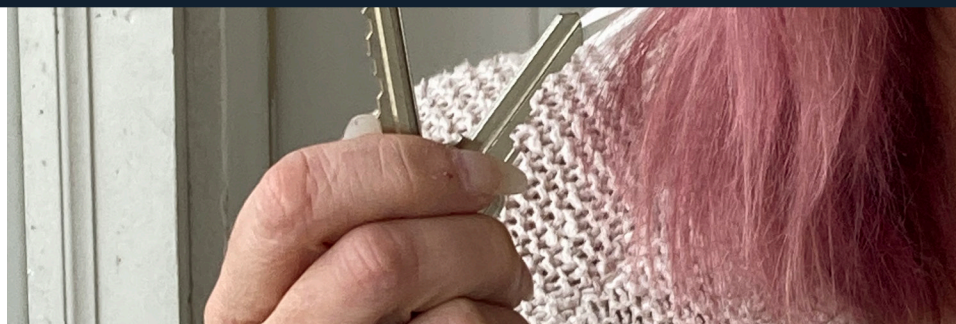
"IN ORDER TO CHANGE, I REALIZED I HAD TO STEP OUT OF MY COMFORT ZONE. I DIDN'T WANT MY KIDS TO GROW UP LIKE ME."

Ericka came to The Salvation Army seeking guidance. She wanted to go back to school but was hesitant because of a learning disability and she had no reliable transportation. Our **Pathway of Hope** program helped her with childcare and financial literacy education. Ericka was also able to purchase a used car, go back to college, connect with the disabilities department, and work towards a better future.

Married with three children, Ericka is blessed with the stability she struggled to obtain. A current college student, she hopes to graduate and give back by working with other domestic abuse survivors.

*Names changed to protect identity

REBECCA'S STORY



Rebecca* was a single mother of three when she lost her job in retail during the COVID-19 pandemic. When the statewide eviction moratorium ended, she also lost her home. “I tried to work with my landlord on setting up a payment plan, but he wouldn’t help me. My credit score was so bad, I couldn’t find a place to live.” After all her options were exhausted, Rebecca ended up sleeping in her car.

While Rebecca qualified for assistance through the **Housing Assistance Program (HAP)**, there were no affordable rentals available, so she was placed on a waiting list. Her caseworker connected with a partner agency, who placed them in a shelter and then a hotel room. “I was overwhelmed. I was so happy that people were willing to help me. I was so grateful!”

Several months later, Rebecca finally received the keys and moved her family into her new home in January. “It’s still so surreal to me. I have a place for me and my kids. I don’t ever want to lose it.”

While she is working again, it’s still difficult to make ends meet. Through the case management Rebecca receives from The Salvation Army, she is working on financial stability, developing a budget and a savings plan so that she can stay in her home.

*Names changed to protect identity



COMMUNITY CORPS



Fulton Heights Citadel

The Fulton Heights Citadel provides community activities and spiritual guidance to people of all ages. Fulton Heights holds in-person and live-streamed church services, Bible study groups, gender and age specific ministries, music programs, and pastoral visitation.

Senior Program

Offered three days a week, seniors participate in holistic activities for the mind, body and spirit — and enjoy a hot, nutritious lunch. Group exercise classes promoting strength, balance and arthritis relief are offered.

7,714 senior meals served

GROW Program

We offer a licensed summer day camp and after-school program (grades K-6) providing homework help, structured activities, supervised play, and snack. The 6-week summer day camp incorporates outdoor activities, reading reinforcement, and weekly themed activities.

28 registrations for Summer Camp

Friday @ the SAL

Intergenerational community events are held every third Friday with a meal, games, crafts, and devotions.

The Ray & Joan Kroc Corps Community Center

The Grand Rapids Kroc Center's 20-acre campus is a place where people of all ages have opportunities to learn and find hope in a safe, warm and welcoming environment. With aquatics, educational opportunities, fine arts, fitness, a two-court gymnasium, music, outdoor recreation, and a worship and performing arts center, the Kroc Center has something for everyone. Recreational membership is offered on an income-based sliding scale.

Kroc Church offers in-person and live-streamed Sunday services and ministry groups for all ages.

750 registrations for Camp Kroc

29% increase in recreational memberships

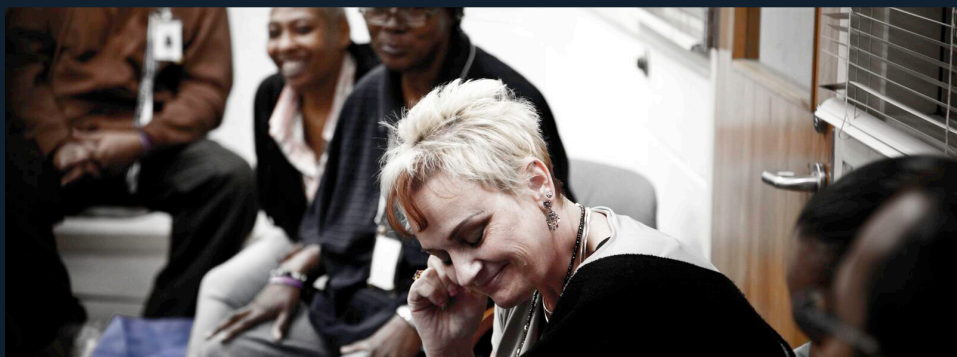


Little Pine Island Camp & Retreat Center (LPI)

Established in 1929, Little Pine Island Camp and Retreat Center offers a setting of natural beauty in a family friendly, Christian atmosphere. Located just 10 minutes from downtown Grand Rapids, LPI is available for all of your group needs, like church, corporate, organizational, or school retreats, family reunions and weddings.



REHABILITATION SERVICES



Turning Point Programs (TPP)

TPP is a licensed and accredited specialized treatment center with a centralized focus on treating alcohol, prescription, or illicit drug abuse and co-occurring disorders. TPP provides medically monitored withdrawal management and short-term residential treatment.

The program provides regular medical monitoring, crisis intervention, clinical therapy, peer support, recreation and exercise activities, family programming, treatment coordination, and support groups on a drug-free campus. Professional medical and clinical services are provided 24 hours a day, 7 days a week.

In 2023, Turning Point Programs will be operating as the West Michigan Harbor Light, which is part of the Great Lakes Harbor Light system, one of the largest and most successful substance abuse treatment providers in Michigan.

Thanks to the Safe Harbor funding from the State of Michigan, we are now able to give direct, immediate access to those seeking treatment. Our facility is doubling the number of beds available for residential services.

433 short-term residential stays
713 detoxifications
1,674 outpatient participants

COMMUNITY SERVICES

Emergency Disaster Services (EDS)

The Salvation Army is one of the country's largest disaster relief organizations. In times of natural disaster or crisis, The Salvation Army is there to provide support and hope to those who need it. EDS provides disaster response and incident command, supporting first responders with Salvation Army Team Emergency Radio Network (SATERN) program, a mobile kitchen, and disaster relief.



Adult Rehabilitation Center (ARC)

A long-term faith-based residential program, provided free for those who have no income, ARC is dedicated to helping individuals in crisis whose lives have become unmanageable and are unable to provide for themselves. The physical and spiritual care that individuals receive prepares them to reenter society and return to gainful employment. The ARC is a 105 bed facility.

The main funding for the ARC comes from The Salvation Army Family Stores, where gently used clothes and household items are donated by the community.

101 fresh starts on life



RED KETTLE CAMPAIGN



The Salvation Army's annual Red Kettle Christmas Campaign raises money to support programming for each upcoming year. The 2022 fundraising goal of \$1.7 million was met despite inclement weather affecting the final two days of bell ringing.

Every dollar that is given in Kent County stays in our local community, funding essential programs and services that The Salvation Army offers beyond the Christmas season.

Thank you, for helping us LOVE BEYOND *CHRISTMAS*!



VOLUNTEERS

Volunteers are crucial to The Salvation Army carrying out its mission. No matter the time of year, they are the heart of our team and are always needed. Their service allows us to be a place of love and support for children, make the holidays a time of joy for those in need, reach out to the elderly, provide food and necessities to families and give hope to those facing disaster.

1,044 Volunteers

5,183 Volunteer Hours

ED'S STORY



Ed Dahlquist regularly donates to The Salvation Army in Kent County. And this year, he started giving even more... his time as a volunteer.

As a volunteer, Ed has had the opportunity to engage with several aspects of The Salvation Army's many programs in Kent County including the Red Kettle Griffins game, Senior program at the Fulton Heights Citadel, the Angel Tree Christmas assistance program, and in the Emergency Food Assistance pantry.

"People are always appreciative and say thank you. It's a rewarding experience helping people. It feels good. Some people apologize and say they are sorry when they ask for food. I just tell them, that's why we're here."



GRAND RAPIDS ADVISORY BOARD (GRAB)



KENT COUNTY

Officers

Dr. Veneese Chandler, Chair
Stephen Watkins, Vice Chair
Pastor James Jones, Secretary
Duane Culver, Treasurer

Life Members

Peg Bykerk
David Hathaway
Robert Hubling
J.C. Huizenga
Max Smith

Member Emeritus

James Buick
Sr. Mary Aquinas Weber
Richard Young

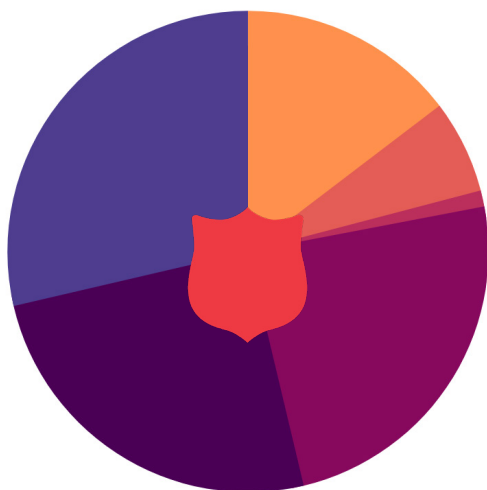
Members

Angie Barry
Shawn Beene
Kevin Belk
Stephen Blann
Christopher Branoff
Dawn Bredeweg
Eric Britcher
Phil Catlett
William Cleveland
Rich Collins
Dale DeHaan
Ed DeVries
Guylaine Donovan
Max Gibbs
Barbara Hohman
David Hood
Mark Huizenga
Sue Huls
Diane W. Hyland
Tina Kanis
Alona Koffler
Jess Larson
Tyler Lecceadone
Peter MacGregor
Beth Reimel, PhD.
Dr. Larry Robson
Dr. William Robson
John Salan
Lindsey Savickas
Monica Scott
Ray Vander Weele
Ginger Young

FISCAL YEAR IN REVIEW

OCTOBER 1, 2021 — SEPTEMBER 30, 2022

Total Public Support & Revenue: \$22,239,949



- Adult Rehabilitation Center
\$6,368,141
- Other Public Support
\$5,579,815
- Fees & Grants from
Government Agencies
\$5,398,688
- Investment Income
\$3,257,415
- Program Service Fees &
Membership Dues
\$1,393,507
- Other Revenue
 - Miscellaneous: \$106,308
 - Sales to the Public: \$86,075
 - Allocated by the Heart of West
Michigan United Way: \$50,000

Total Expenses: \$21,923,840



- Adult Rehabilitation Center
\$5,753,925
- Grand Rapids Kroc Center
& Fulton Heights Corps
\$5,365,134
- Kent County Social Services
\$3,409,680
- Management & General
\$2,385,527
- Little Pine Island Camp
\$2,197,519
- Turning Point Programs
\$1,896,990
- Fundraising
\$915,065

	2021	2022
Excess (Deficiency) of Public Support and Revenue over Expenses	\$184,897	\$316,109
Beginning Net Assets	\$317,121	\$502,019
Unrestricted Net Assets	\$463,395	\$779,534
Temporarily Restricted Net Assets	\$38,624	\$38,594
Total Net Assets	\$502,019	\$818,128



OUR LOCATIONS

1

Kent County

Administrative Offices

1215 Fulton Street E
Grand Rapids, MI 49503
616-459-3433
SAKentCounty.org

2

Fulton Heights Citadel

1235 Fulton Street E
Grand Rapids, MI 49503
616-454-1459
SAFultonHeights.org

3

Kent County Social Services

1215 Fulton Street E
Grand Rapids, MI 49503
616-459-9468
SAKentCounty.org

4

Ray & Joan Kroc Corps Community Center

2500 Division Avenue S
Grand Rapids, MI 49507
616-588-7200
GRKrocCenter.org

5

Turning Point Programs

1215 Fulton Street E
Grand Rapids, MI 49503
616-742-0351
TurningPointGR.org

6

Adult Rehabilitation Center

1491 Division Ave S
Grand Rapids, MI 49507
616-452-3133
GrandRapids.SATruck.org



7

Emergency Disaster Services

1632 Linden Avenue SE
Grand Rapids, MI 49507
616-822-3329
SAKentCounty.org/EDS

8

Little Pine Island Camp & Retreat Center

6889 Pine Island Drive NE
Comstock Park, MI 49321
616-784-1404
LPICamp.org

THE SALVATION ARMY, AN INTERNATIONAL MOVEMENT, IS AN EVANGELICAL PART OF THE UNIVERSAL CHRISTIAN CHURCH. ITS MESSAGE IS BASED ON THE BIBLE. ITS MINISTRY IS MOTIVATED BY THE LOVE OF GOD. ITS MISSION IS TO PREACH THE GOSPEL OF JESUS CHRIST AND TO MEET HUMAN NEEDS IN HIS NAME WITHOUT DISCRIMINATION.

PART OF THE GREAT LAKES DIVISION