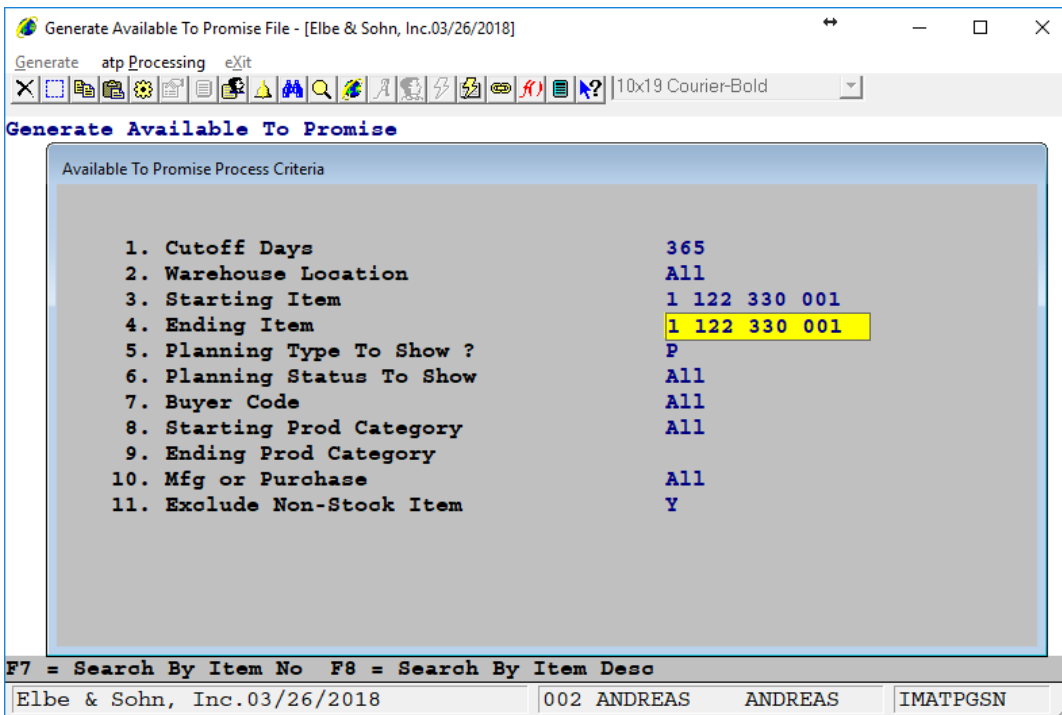


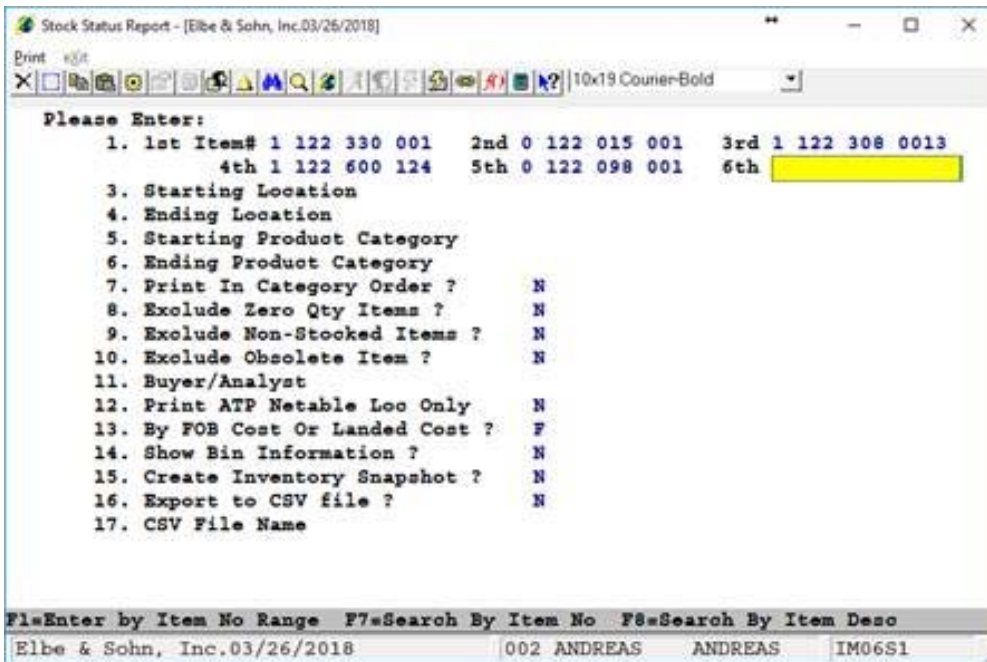
Andreas Barthel

Subject: FW: ATP process criteria - improvement

From: Andreas Barthel
Sent: Monday, March 26, 2018 9:12 PM
To: Edward Kwang (EMK@netcellent.com) <EMK@netcellent.com>
Cc: Roger Sueng - NETCELLENT (rss@elliott.com) <rss@elliott.com>
Subject: ATP process criteria - improvement



I there a way of selecting up to 6 part numbers in this screen....like with Inventory stock status report (F1) (maybe even multiple categories)



Maybe even something like gross requirements (F4) to import the order and just look at the components for a job.

