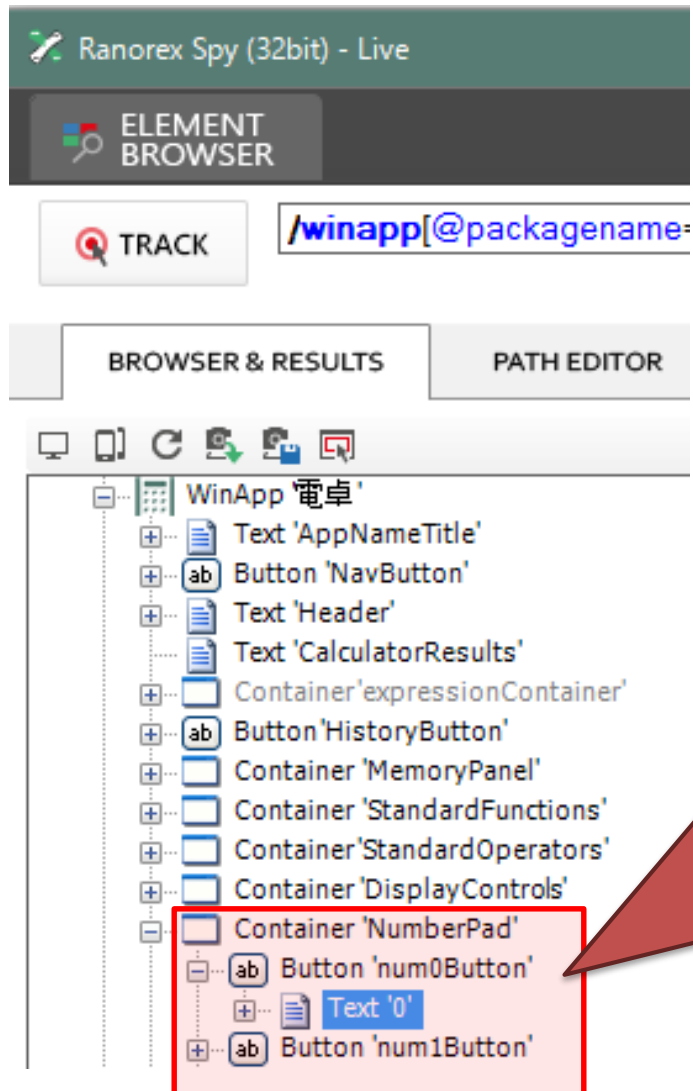
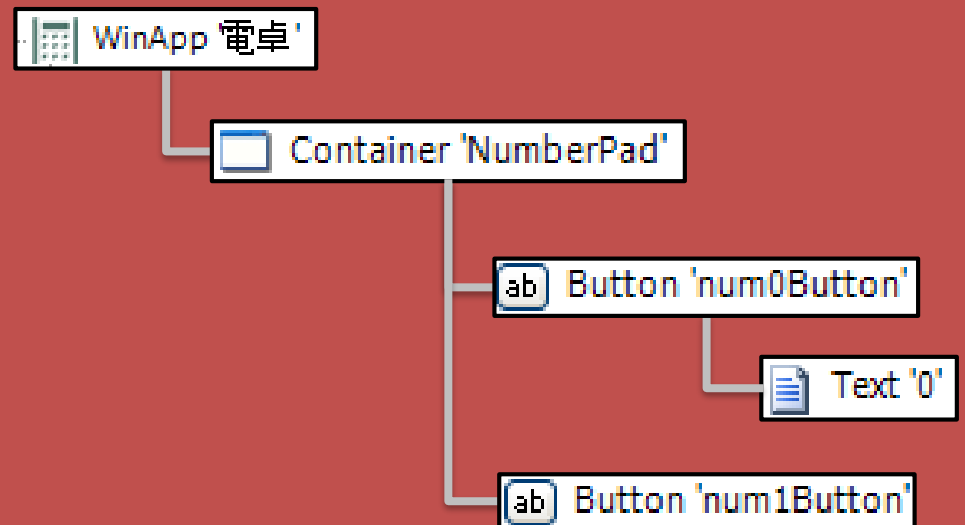


Add the objects to the repository just like Ranorex SPY(Show the objects in tree structure).



The object configuration displayed in Ranorex SPY:



Before:

Ranorex Spy (32bit) - Live

ELEMENT BROWSER

TRACK

`/winapp[@packagename=`

BROWSER & RESULTS

PATH EDITOR

WinApp '電卓'

- Text 'AppNameTitle'
- Button 'NavButton'
- Text 'Header'
- Text 'CalculatorResult'
- Container 'expressionContainer'
- Button 'HistoryButton'
- Container 'MemoryPanel'
- Container 'StandardFunctions'
- Container 'StandardOperators'
- Container 'DisplayControls'
- Container 'NumberPad'
 - Button 'num0Button'
 - Text '0'
 - Button 'num1Button'

Objects added to the repository are arranged in the same hierarchy.

Item	Path
WindowsApp 電卓	Base: /winapp[@packagename='Microsoft.WindowsCalculator']
Text0	??/button[@automationid='num0Button']/text[@name='0']
ab Num0Button	??/button[@automationid='num0Button']
Text1	??/button[@automationid='num1Button']/text[@name='1']
ab Num1Button	??/button[@automationid='num1Button']
Text2	??/button[@automationid='num2Button']/text[@name='2']
ab Num2Button	??/button[@automationid='num2Button']
Text3	??/button[@automationid='num3Button']/text[@name='3']
ab Num3Button	??/button[@automationid='num3Button']
Text4	??/button[@automationid='num4Button']/text[@name='4']
ab Num4Button	??/button[@automationid='num4Button']
Text5	??/button[@automationid='num5Button']/text[@name='5']
ab Num5Button	??/button[@automationid='num5Button']
Text6	??/button[@automationid='num6Button']/text[@name='6']
ab Num6Button	??/button[@automationid='num6Button']
Text7	??/button[@automationid='num7Button']/text[@name='7']
ab Num7Button	??/button[@automationid='num7Button']
Text8	??/button[@automationid='num8Button']/text[@name='8']
ab Num8Button	??/button[@automationid='num8Button']
Text9	??/button[@automationid='num9Button']/text[@name='9']
ab Num9Button	??/button[@automationid='num9Button']
Text	??/button[@automationid='decimalSeparatorButton']/text[@name='.']
ab DecimalSeparatorButton	??/button[@automationid='decimalSeparatorButton']
NumberPad	container[@automationid='NumberPad']

Add to Repository (incl. Children)

After:

Ranorex Spy (32bit) - Live

ELEMENT BROWSER

TRACK /winapp[@packagename=

BROWSER & RESULTS PATH EDITOR

- WinApp 電卓
 - Text 'AppNameTitle'
 - Button 'NavButton'
 - Text 'Header'
 - Text 'CalculatorResults'
 - Container 'expressionContainer'
 - Button 'HistoryButton'
 - Container 'MemoryPanel'
 - Container 'StandardFunctions'
 - Container 'StandardOperators'
 - Container 'DisplayControls'
 - Container 'NumberPad'
 - Button 'num0Button'
 - Text '0'
 - Button 'num1Button'

Request :

Please add objects to the repository with the same configuration as Ranorex SPY.

Item	Path
WindowsApp電卓	Base: /winapp[@packagename='Microsoft.WindowsCalculator']
NumberPad	Base: container[@automationid='NumberPad']
Num0Button	Base: ??/button[@automationid='num0Button']
Text0	??/button[@automationid='num0Button']/text[@name='0']
Num1Button	Base: ??/button[@automationid='num1Button']
Text1	text[@name='1']
Num2Button	Base: ??/button[@automationid='num2Button']
Text2	??/button[@automationid='num2Button']/text[@name='2']
Num3Button	Base: ??/button[@automationid='num3Button']
Text3	??/button[@automationid='num3Button']/text[@name='3']
Num4Button	Base: ??/button[@automationid='num4Button']
Text4	??/button[@automationid='num4Button']/text[@name='4']
Num5Button	Base: ??/button[@automationid='num5Button']
Text5	??/button[@automationid='num5Button']/text[@name='5']
Num6Button	Base: ??/button[@automationid='num6Button']
Text6	??/button[@automationid='num6Button']/text[@name='6']
Num7Button	Base: ??/button[@automationid='num7Button']
Text7	??/button[@automationid='num7Button']/text[@name='7']
Num8Button	Base: ??/button[@automationid='num8Button']
Text8	??/button[@automationid='num8Button']/text[@name='8']
Num9Button	Base: ??/button[@automationid='num9Button']
Text9	??/button[@automationid='num9Button']/text[@name='9']

Add to Repository (incl. Children)