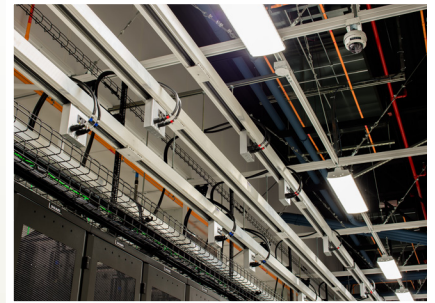


CONTRACTING SERVICES:

- Metal Stud Framing
- Drywall Systems
- Raised Access Flooring
- Cleanroom Construction
- Lath & Plaster Systems
- Hot/Cold Aisle Containment
- Strut Grid
- Acoustical Ceilings
- Finishings

COMPLETED PROJECTS

- NetApp Digital Realty Data Center - Hillsboro, OR
- Adobe NA Data Centers - Hillsboro, OR
- Charles Schwab Data Center - Phoenix, AZ
- Equinix - Elk Grove Village, IL
- Southern California Edison - Los Angeles, CA
- Wells Fargo Data Center - Phoenix, AZ
- Department of Information Systems - Olympia, WA
- Equinix DC5 - Ashburn, VA
- IU Data Center - Bloomington, IN
- A 100 Data Center MDF - Hayward, CA
- Coresite Data Centers - Santa Clara, CA
- CNSE NFX Data Center - Albany, NY
- Liberty Mutual Data Center - Redmond, WA
- Crane P-340 RAF - Crane, IN
- CNSE Computer Room - Albany, NY
- Microsoft Firnstahl Building - Redman, WA
- Lab Expansion Bangor Naval Station - Silverdale, WA
- Lone Mountain Data Center - Las Vegas, NV
- Mission Avionics System Trainer - Coupeville, WA
- Midwest ISO Rebuild - Carmel, IN
- IU Data Center - Bloomington, IN
- Midwest ISO - Carmel, IN
- Comcast Data Center - Olympia, WA
- Frankfort City Data Center AF - Frankfort, IN
- Leesburg/Madison Elementary - Warsaw, IN
- White Construction AF - Clinton, IN
- AutoDesk - San Francisco, CA
- Sunrise Valley - Reston, VA
- MH South Campus Data Security - Indianapolis, IN
- Portland Community College, Data Center - Portland, OR



PCI Technology Services
email: info@PCG.com

Call: 1-800-255-6886
www.PCG.com

