



# CASA DEL MAR

HOTEL BY THE SEA

MEDITERRANEAN-INSPIRED LUXURY

ENTER



1910 Ocean Way, Santa Monica, CA 90405 | 310.581.5533 Reservations | [HotelCasaDelMar.com](http://HotelCasaDelMar.com)

*etc*  
HOTELS

LEGEND  
*Preferred*  
HOTELS & RESORTS



# DISCOVER CASA

MAP

ACCOMMODATIONS

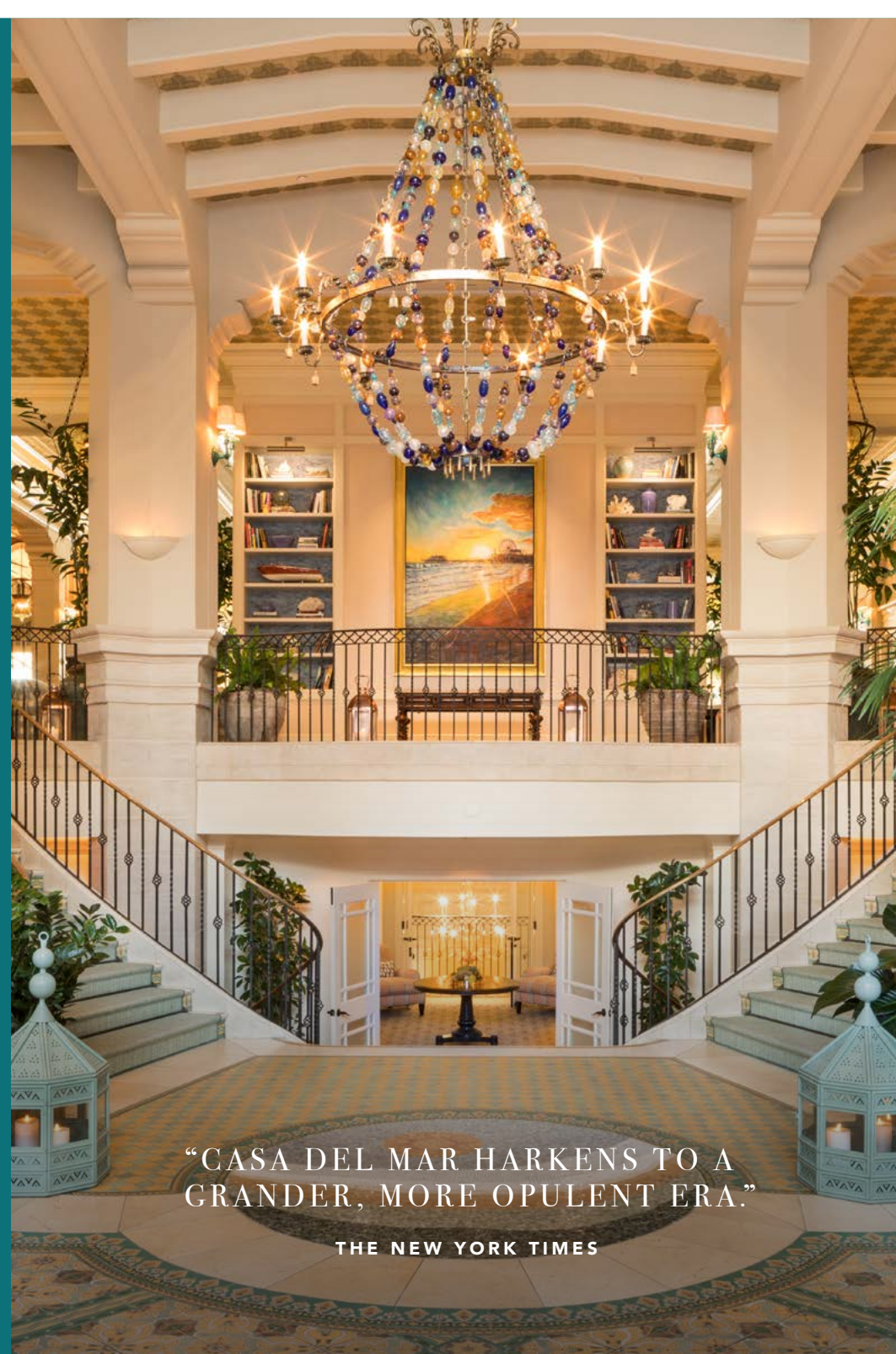
EVENTS

DINING

SPA & FITNESS

POOL & THE BEACH

AUDIO VISUAL



“CASA DEL MAR HARKENS TO A  
GRANDER, MORE OPULENT ERA.”

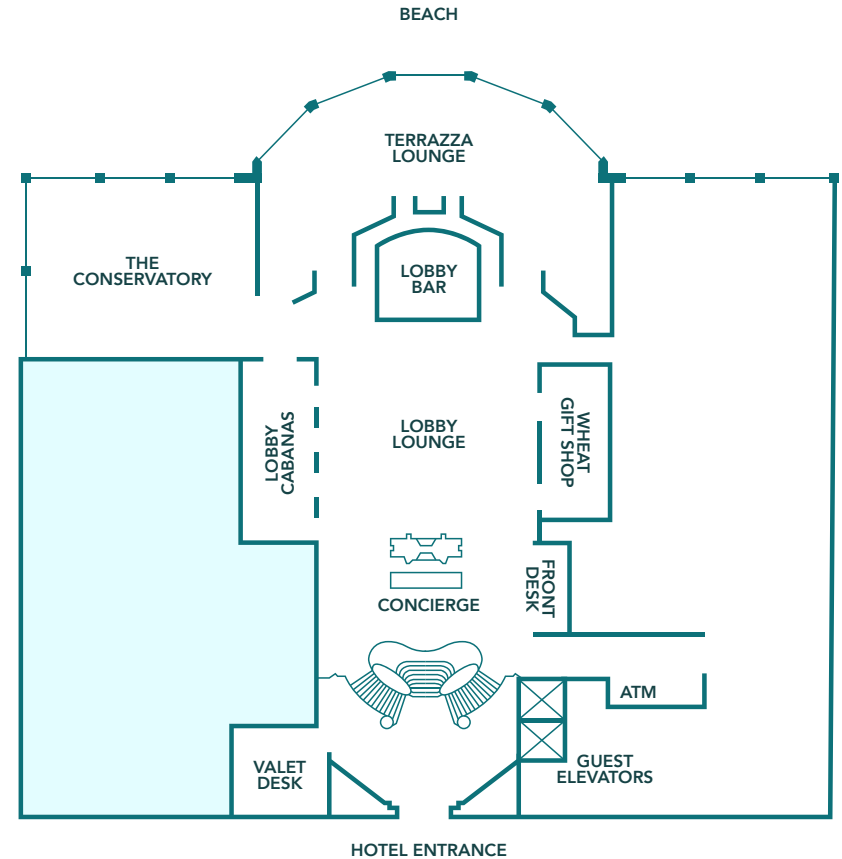
THE NEW YORK TIMES



# DISCOVER CASA DEL MAR



Located on the world-renowned Santa Monica Beach, walking distance to Santa Monica Pier and shopping on Abbot Kinney Boulevard and Montana Avenue.



**129**  
GUESTROOMS

**16**  
SUITES



**RESTAURANTS**  
Terrazza, The Lobby Lounge,  
& seasonal al fresco bistro,  
Patio Del Mar



**SEA WELLNESS SPA  
FITNESS CENTER**



**VALET PARKING  
EXCLUSIVELY**



**8**  
MILES TO LAX &  
BEVERLY HILLS

**15**  
MILES TO  
DOWNTOWN LA

**LOBBY CABANAS & BAR**



**OUTDOOR HEATED POOL  
WHIRLPOOL SPA  
BEACH ACTIVITY CENTER**



MAP

ACCOMMODATIONS

EVENTS

DINING

SPA & FITNESS

POOL & THE BEACH

AUDIO VISUAL

# ACCOMMODATIONS

MEDITERRANEAN-INSPIRED LUXURY



KING BED



PALM TERRACE KING



DOUBLE BED



SANTA MONICA SUITES



OCEAN VIEW SUITES



PENTHOUSE SUITES



PACIFIC VIEW SUITES



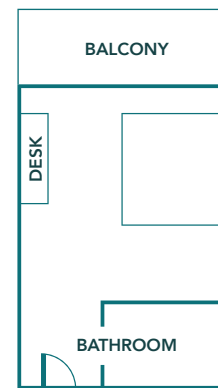


NOT TO SCALE

## KING BED

*Superior and Deluxe are Non-Ocean View,  
Partial Ocean View, Ocean View and Ocean Front Kings*

- 400 Square Feet
- Handcrafted California King Bed with Italian Designed Linen
- Bathroom includes Hydrothermal Massage Tub, and Separate Shower
- Smart TV, Bluetooth Speaker System, and Bedside Control Technology
- Nespresso Coffee Machine
- Signature Dyptique™ Bath Amenities



NOT TO SCALE

## PALM TERRACE KING

*Outdoor Patio, Non-Ocean View*

- 400 Square Feet
- Handcrafted California King Bed with Italian Designed Linen
- Bathroom includes Hydrothermal Massage Tub, and Separate Shower
- Smart TV, Bluetooth Speaker System, and Bedside Control Technology
- Nespresso Coffee Machine
- Outdoor Patio, opening onto Pool Deck
- Signature Dyptique™ Bath Amenities



NOT TO SCALE

# DOUBLE BED

*Superior and Deluxe Doubles are Non-Ocean View*

- 400 Square Feet
- Handcrafted Two Double Beds with Italian Designed Linen
- Bathroom includes Hydrothermal Massage Tub, and Separate Shower
- Smart TV, Bluetooth Speaker System, and Bedside Control Technology
- Nespresso Coffee Machine
- Signature Dyptique™ Bath Amenities

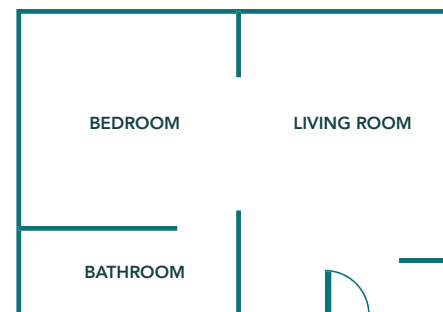


NOT TO SCALE

# SANTA MONICA SUITES

*One Bedroom*

- 600 Square Feet
- Santa Monica City Views (non-ocean view)
- Bedroom features Handcrafted California King Bed with Italian Designed Linen
- Italian Marble Bathroom featuring Bidet, Hydrothermal Massage Tub, and Separate Shower
- Living Room with Pull Out Sofa and Writing Desk
- Smart TVs, Bluetooth Speaker System, and Bedside Control Technology
- Nespresso Coffee & Espresso Machine
- Signature Dyptique™ Bath Amenities

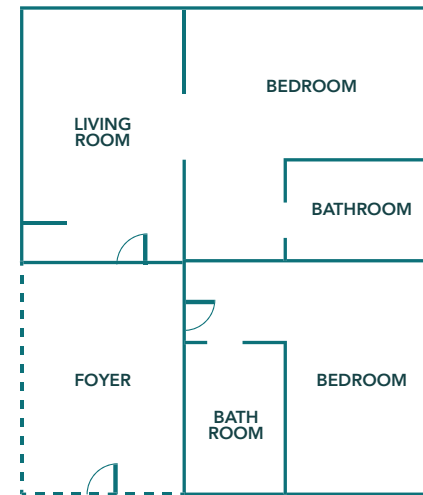


NOT TO SCALE

# OCEAN VIEW SUITES

*One Bedroom*

- 700 Square Feet
- Panoramic Views of the Coastline and Santa Monica Beach
- Bedroom features Handcrafted California King Bed with Italian Designed Linen
- Italian Marble Bathroom featuring Bidet, Hydrothermal Massage Tub, and Separate Shower
- Living Room with Pull Out Sofa and Writing Desk
- Smart TVs, Bluetooth Speaker System, and Bedside Control Technology
- Nespresso Coffee & Espresso Machine
- Signature Dyptique™ Bath Amenities



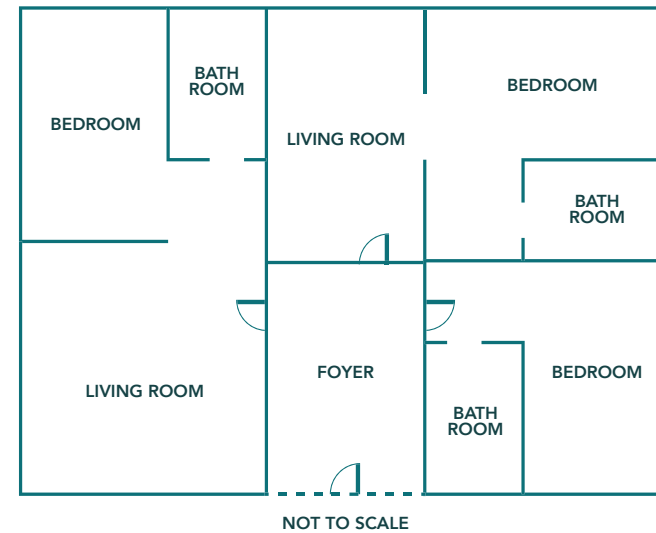
NOT TO SCALE

# OCEAN VIEW SUITES

*Two Bedroom*



- 1,100 Square Feet
- Panoramic Views of the Coastline and Santa Monica Beach
- Two Adjoining Rooms Connected by Foyer
- Bedrooms featuring Handcrafted California King Beds with Italian Designed Linen
- Two Italian Marble Bathrooms featuring Bidet, Hydrothermal Massage Tubs, and Separate Showers
- Living Room with Pull Out Sofa and Writing Desk
- Smart TVs, Bluetooth Speaker System, and Bedside Control Technology
- Nespresso Coffee & Espresso Machine
- Signature Dyprique™ Bath Amenities

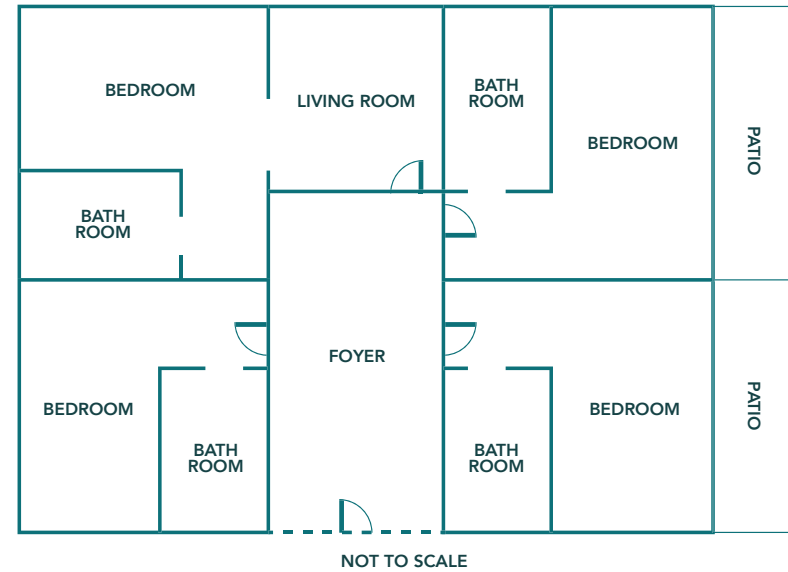


# OCEAN VIEW SUITES

*Three Bedroom*



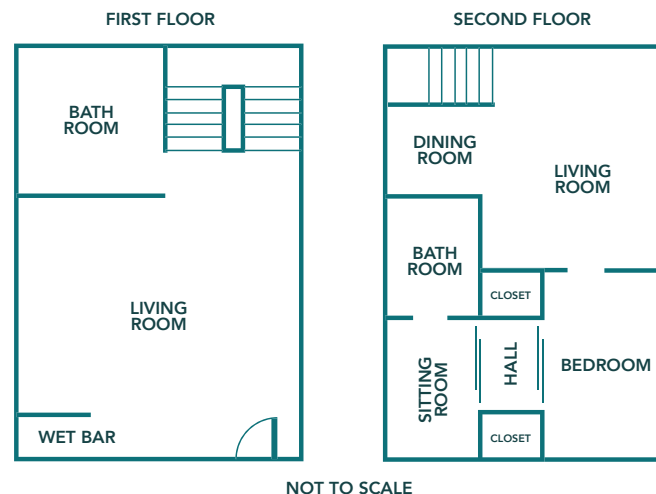
- 1,700 Square Feet
- Panoramic Views of the Coastline and Santa Monica Beach
- Two Living Rooms with Fireplaces, Pull Out Sofas and Writing Desks
- Three Adjoining Rooms Connected by Foyer
- Bedrooms featuring Handcrafted California King Beds with Italian Designed Linen
- Three Italian Marble Bathrooms featuring Bidet, Hydrothermal Massage Tubs, and Separate Showers
- Smart TVs, Bluetooth Speaker System, and Bedside Control Technology
- Nespresso Coffee & Espresso Machine
- Signature Dyprique™ Bath Amenities



# OCEAN VIEW SUITES

*Four Bedroom*

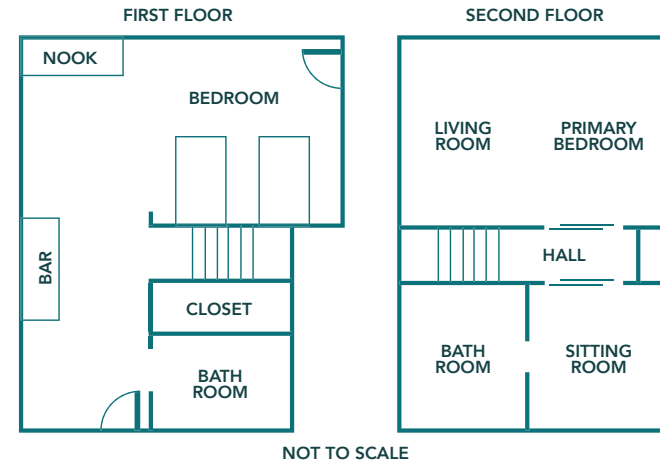
- 1,900 Square Feet
- Panoramic Views of the Coastline and Santa Monica Beach
- Four Adjoining Rooms Connected by Foyer
- Two Outdoor Patios
- Bedrooms featuring Handcrafted California King Beds with Italian Designed Linen
- Four Italian Marble Bathrooms featuring Bidet, Hydrothermal Massage Tubs, and Separate Showers
- Smart TVs, Bluetooth Speaker System, and Bedside Control Technology
- Nespresso Coffee & Espresso Machine
- Signature Dyptique™ Bath Amenities



# PENTHOUSE 801

*One Bedroom Penthouse Suite*

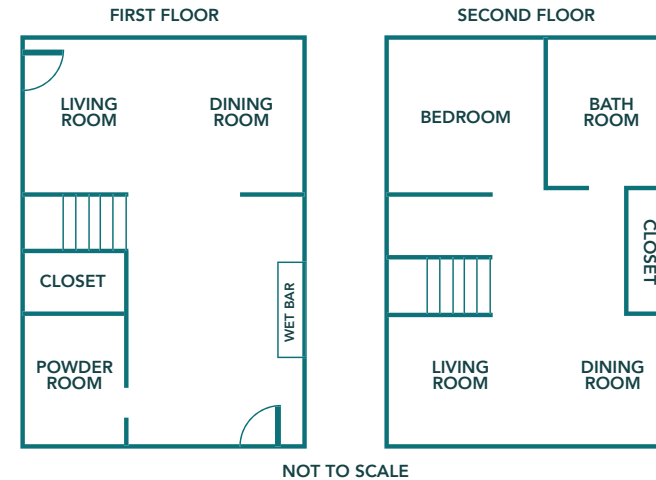
- 1,500 Square Feet
- Panoramic Views of the Coastline and Santa Monica Beach
- Located on the Top Floor of the Hotel
- Two Floors
- Bedroom features Handcrafted California King Bed with Italian Designed Linen
- Two Italian Marble Bathrooms featuring Bidet, Hydrothermal Massage Tub, and Separate Shower in Primary Bath
- Downstairs Sitting Room with Pull Out Sofa
- Wet Bar with Wine Fridge
- Upstairs Living Room with Pull Out Sofa and Writing Desk
- Separate Dining Area
- Smart TVs, Bluetooth Speaker System, and Bedside Control Technology
- Nespresso Coffee & Espresso Machine
- Signature Dyptique™ Bath Amenities



# PENTHOUSE 802

*Two Bedroom Penthouse Suite*

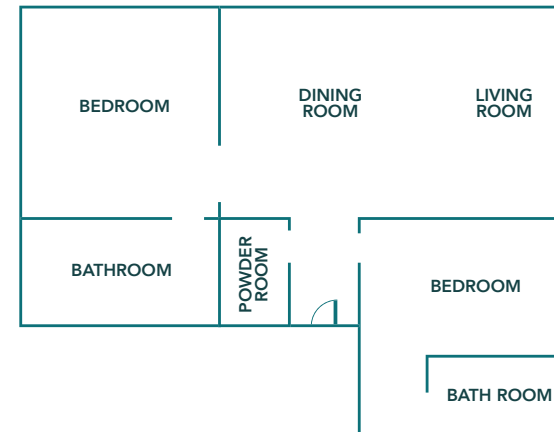
- 1,450 Square Feet
- Panoramic Views of the Coastline and Santa Monica Beach
- Located on the Top Floor of the Hotel
- Two Floors
- Resting Nook with Skylight
- Primary Bedroom features Handcrafted California King Bed with Italian Designed Linen
- Second Bedroom features Two Double Beds with Italian Designed Linen
- Two Italian Marble Bathrooms featuring Bidet, Hydrothermal Massage Tub, and Separate Shower in Primary Bath
- Wet Bar with Wine Fridge
- Upstairs Living Room and Dining Area with Pull Out Sofa and Fireplace
- Connects to One Bedroom Penthouse Suite to make a Three Bedroom Suite
- Smart TVs, Bluetooth Speaker System, and Bedside Control Technology
- Nespresso Coffee & Espresso Machine
- Signature Dyprique™ Bath Amenities



# PENTHOUSE 803

*One Bedroom Penthouse Suite*

- 1,500 Square Feet
- Panoramic Views of the Coastline and Santa Monica Beach
- Located on the Top Floor of the Hotel
- Two Floors
- Resting Nook with Skylight
- Bedroom features Handcrafted California King Bed with Italian Designed Linen
- Two Italian Marble Bathrooms featuring Bidet, Hydrothermal Massage Tub, and Separate Shower in Primary Bath
- Downstairs Dining Room and Living Room with Pull Out Sofa
- Wet Bar with Wine Fridge
- Upstairs Living Room and Dining Area with Pull Out Sofa and Fireplace
- Connects to Two Bedroom Penthouse Suite
- Smart TVs, Bluetooth Speaker System, and Bedside Control Technology
- Nespresso Coffee & Espresso Machine
- Signature Dyptique™ Bath Amenities



NOT TO SCALE

## PACIFIC VIEW SUITE

- 1,800 Square Feet
- Full Views of the Ocean, California Coastline and Santa Monica Pier
- Two Fireplaces
- Two Primary Bedrooms featuring Handcrafted California King Beds with Italian Designed Linen
- 2½ Italian Marble Bathrooms featuring Bidet, Hydrothermal Massage Tub, and Separate Showers in Primary Baths
- Living Room and Dining Room with Fireplace, Pull Out Sofa, Dining Table and Writing Desk
- Smart TVs, Bluetooth Speaker System, and Bedside Control Technology
- Nespresso Coffee & Espresso Machine
- Signature Dyptique™ Bath Amenities



# EVENT SPACES

A VARIETY OF INDOOR AND OUTDOOR EVENT SPACES ARE PERFECT FOR ANY MEETING, WEDDING OR SOCIAL OCCASION... JUST STEPS FROM THE SAND



COLONNADE BALLROOM



CRIMSON ROOM & BOARDROOM



THE CONSERVATORY



CABANAS



PALM TERRACE



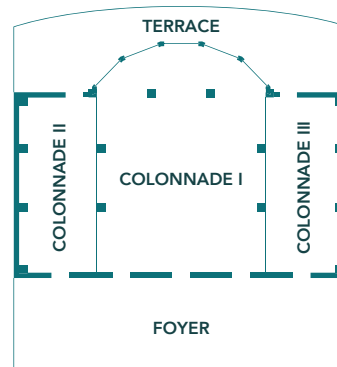
INDIGO ROOM



# COLONNADE BALLROOM

*The only ballroom in Los Angeles located right on the beach, Colonnade is a breathtaking backdrop for Cocktail Receptions, Dinners, Wedding Ceremonies and Meetings.*

- Ballroom Divides into Three Sections, featuring Natural Light and 13' Ceilings
- Two Foyers offering Ample Pre-function Space
- Private Outdoor Terrace for Receptions
- Music Amplification Not Permitted Outdoors



	COLONNADE BALLROOM	COLONNADE I	COLONNADE II	COLONNADE III	COLONNADE FOYER	COLONNADE TERRACE
<b>DIMENSIONS</b>	82' x 71'	48' x 71'	16' x 60'	16' x 60'	19.5' x 82'	75' x 12'
<b>SQ FT</b>	5,800	3,400	960	960	1,599	900
<b>CEILING</b>	13'	13'	8'	8'	13'	16'
<b>CLASSROOM</b>	225	160	36	36		
<b>CONFERENCE</b>	50	50	50	50		
<b>SQUARE</b>	78	78	48	48		
<b>U-SHAPE</b>	66	66	45	45		
<b>ROUNDS</b>	360	200	60	60		60
<b>THEATER</b>	375	280	60	60		
<b>RECEPTION</b>	600	330	100	100		75
<b>ROUNDS W/ DANCE FLOOR</b>	312	190				

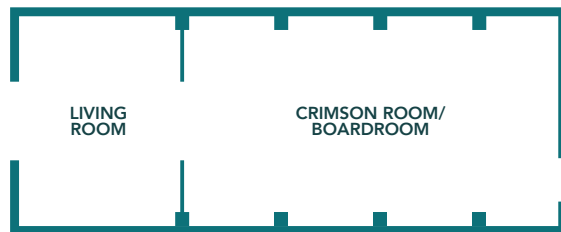




# CRIMSON ROOM & BOARDROOM

Smaller breakout rooms featuring modern décor and adjacent "living rooms" that are perfect for pre-function space or meal displays.

- Boardroom features a Fixed Boardroom Table and Boardroom-style Chairs for 16 People
- An Additional Foyer adjoins the Two Spaces
- Rooms can be used Together or Separately



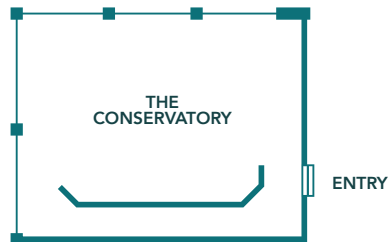
	CRIMSON ROOM	CRIMSON LIVING ROOM
<b>DIMENSIONS</b>	17.5' x 33'	20.5' x 16'
<b>SQ FT</b>	580	330
<b>CEILING</b>	8'5"	8'5"
<b>CLASSROOM</b>	30	—
<b>CONFERENCE</b>	24	—
<b>SQUARE</b>	30	—
<b>U-SHAPE</b>	27	—
<b>ROUNDS</b>	50	—
<b>THEATER</b>	60	—
<b>RECEPTION</b>	50	20





# THE CONSERVATORY

- Panoramic Views of the Pacific Ocean Boasting Floor-to-ceiling Windows
- Completely Private and can Accommodate up to 96 Seated Guests or 100 Guests for a Reception-style Event



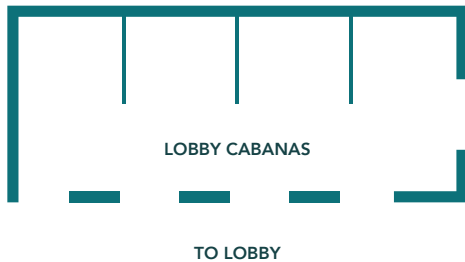
<b>DIMENSIONS</b>	35' x 50'
<b>SQ FT</b>	1,750
<b>CEILING</b>	13'
<b>CLASSROOM</b>	48
<b>CONFERENCE</b>	30
<b>SQUARE</b>	32
<b>U-SHAPE</b>	28
<b>ROUNDS</b>	Existing: 96
<b>THEATER</b>	96
<b>RECEPTION</b>	100
<b>ROUNDS W/ DANCE FLOOR</b>	50



# LOBBY CABANAS

Four indoor lobby cabanas are perfect for hospitality space, cocktail receptions or as a post-event lounge. Each cabana can seat up to 10 guests, with a maximum capacity of 40 for a standing reception. The cabanas offer the vivacious energy of the hotel lobby and entertainment, while being exclusively removed in semi-private space.

- Private Bar and Bartenders Available
- Bottle Service Offered



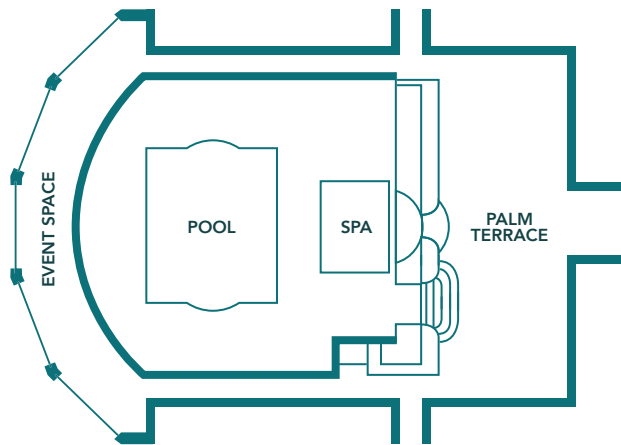
<b>DIMENSIONS</b>	40.5' x 15'
<b>SQ FT</b>	607
<b>RECEPTION</b>	40





# PALM TERRACE

*Framed by California sunsets and tropical palm trees lining Santa Monica Beach, Casa del Mar's Palm Terrace serves great food, better views, and an unforgettable small gathering on the edge of the Pacific.*



<b>DIMENSIONS</b>	76' x 10'
<b>SQ FT</b>	760
<b>RECEPTION</b>	60
<b>KINGS TABLE</b>	20
<b>ROUNDS</b>	50





# INDIGO ROOM

*Intimate private event space perfect for breakouts or small meetings.*



<b>DIMENSIONS</b>	17.5' x 20
<b>SQ FT</b>	350
<b>CEILING</b>	8'
<b>CLASSROOM</b>	18
<b>CONFERENCE</b>	14
<b>SQUARE</b>	18
<b>U-SHAPE</b>	12
<b>ROUNDS</b>	24
<b>THEATER</b>	32
<b>RECEPTION</b>	20





MAP

ACCOMMODATIONS

EVENTS

DINING

SPA & FITNESS

POOL & THE BEACH

AUDIO VISUAL

# DINING

OFFERING BREATHTAKING VIEWS OF THE OCEAN,  
THESE RESTAURANTS FEATURE CALIFORNIA-FRESH CUISINE  
IN A RELAXED, MEDITERRANEAN-INSPIRED SETTING.





MAP

ACCOMMODATIONS

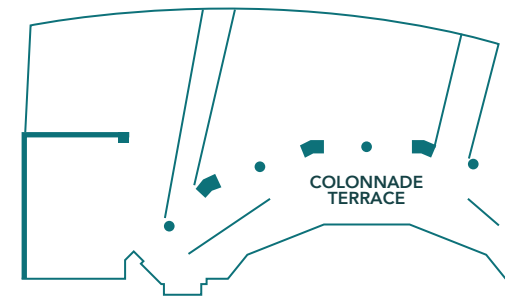
EVENTS

DINING

SPA & FITNESS

POOL & THE BEACH

AUDIO VISUAL



## PATIO DEL MAR

*Reserve a front seat table beachside at the seasonal al fresco bistro, Patio del Mar.*

- Open Seasonally, Weather Permitting
- Seats Up to 85 Guests
- Steps from the Beach, it is perfect for a Summer Lunch or Sunset Dinner with Friends
- Available for Private Events





MAP

ACCOMMODATIONS

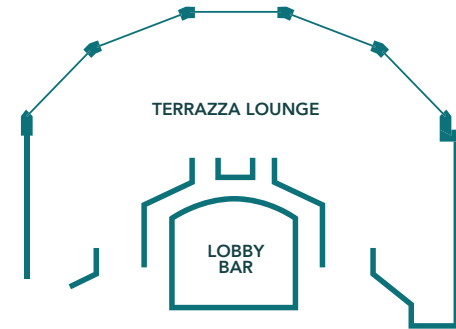
EVENTS

DINING

SPA & FITNESS

POOL & THE BEACH

AUDIO VISUAL



# TERRAZZA

*Where the Mediterranean Sea meets the Pacific Ocean.  
Savor coastal cuisine paired with fine wines,  
artisanal cocktails, and stunning sunsets.*

- Open for Breakfast, Lunch, and Dinner Daily
- Weekend Brunch
- Seats Up to 125 Guests





MAP

ACCOMMODATIONS

EVENTS

DINING

SPA & FITNESS

POOL & THE BEACH

AUDIO VISUAL



# THE LOBBY LOUNGE

*As the sun sets, the lobby glows with golden hour light and live music fills the air.*

- Live Music
- Artisanal Cocktails, Wine, and Light Bites are Served
- Seating on a First-Come First-Served Basis





MAP

ACCOMMODATIONS

EVENTS

DINING

SPA & FITNESS

POOL & THE BEACH

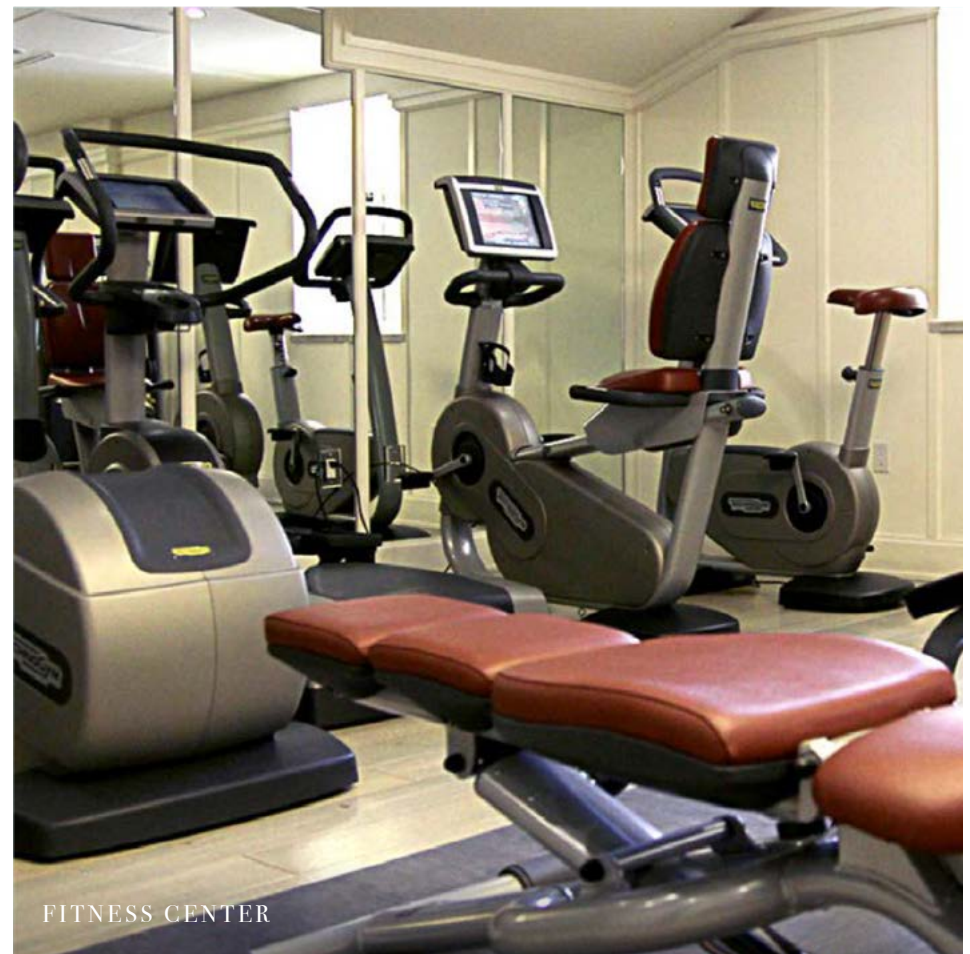
AUDIO VISUAL

# SPA & FITNESS

LUXURIOUS TREATMENTS AND STATE OF THE ART EQUIPMENT WILL HELP MAKE WELLNESS A WAY OF LIFE WHILE IN SANTA MONICA.



SEA WELLNESS SPA



FITNESS CENTER



MAP

ACCOMMODATIONS

EVENTS

DINING

SPA & FITNESS

POOL & THE BEACH

AUDIO VISUAL

# SEA WELLNESS SPA

*Eco-friendly Sea Wellness Spa features six multi-purpose treatment rooms and offers luxury skincare, body care and HydraFacial systems. Natural woods and stone combined with subtle tones of sand and sea evoke the healing powers of the Pacific.*

- Custom Treatments by Omorovicza and MBR
- Relaxation Lounge and Steam Shower

SPA MENU





MAP

ACCOMMODATIONS

EVENTS

DINING

SPA & FITNESS

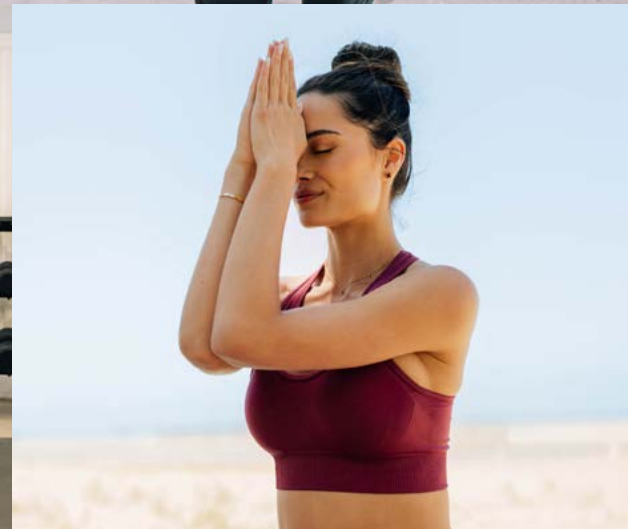
POOL & THE BEACH

AUDIO VISUAL

# FITNESS CENTER

*Featuring cardio equipment, resistance machines and free weights, our comprehensive fitness center has everything you need to maintain your workout routine.*

- Open 24 hours
- Yoga Classes on the Beach
- Featuring Peloton and Technogym





MAP

ACCOMMODATIONS

EVENTS

DINING

SPA & FITNESS

POOL & THE BEACH

AUDIO VISUAL

# POOL & THE BEACH

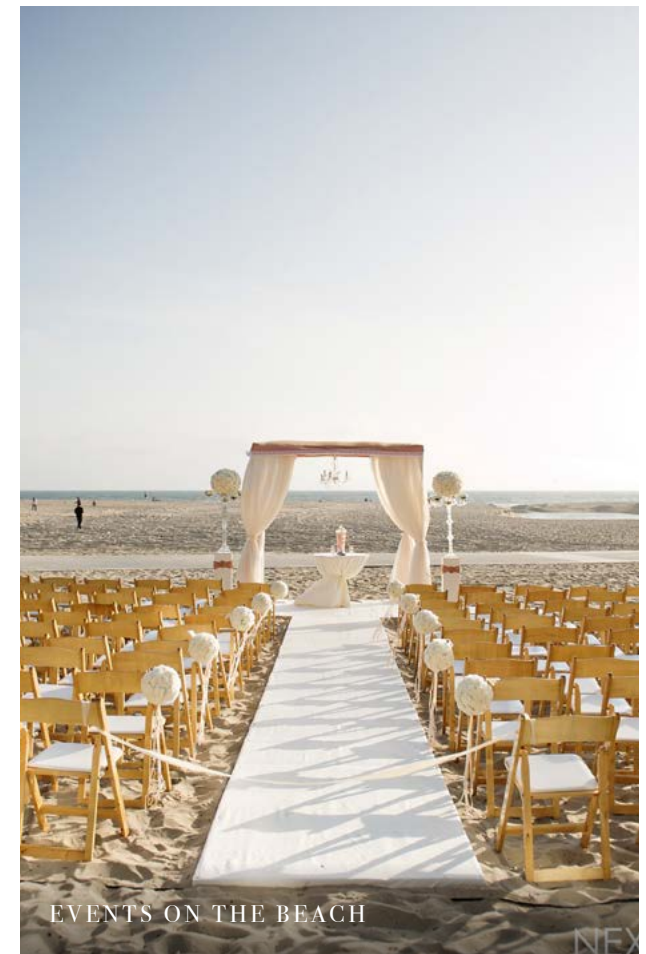
LOCATED JUST STEPS FROM SANTA MONICA'S MOST LUXURIOUS BEACH, ENJOY UNPARALLELED PACIFIC VIEWS FROM THE BEACH AND PRIVATE POOL DECK.



THE POOL



BEACH CONCIERGE



EVENTS ON THE BEACH

NEX



## THE POOL

*Lounge, swim, and soak up the sun on the pool terrace overlooking the ocean. Food and beverage services and heated whirlpool also available.*

- Open Seasonally from 6:00 a.m. to 10:00 p.m.
- Offering Views of the Beach and the Santa Monica Pier
- Palm Terrace Patio may be Reserved for Private Events





# BEACH CONCIERGE

*Located next door in front of our sister property, Shutters on the Beach, our friendly beach concierge is here to assist with every need. They can arrange for beach chairs and umbrellas, bicycle rentals, surf lessons or boogie boards. Offering a beachside refreshment menu to enjoy while on the sand.*

- Surf Lessons
- Bike Rentals
- Beach Chairs and Umbrellas





MAP

ACCOMMODATIONS

EVENTS

DINING

SPA & FITNESS

POOL & THE BEACH

AUDIO VISUAL



# EVENTS ON THE BEACH

*Wedding ceremonies and meetings are permitted on the beach in front of the hotel. Our Catering and Events Team are happy to arrange a breathtaking event.*

**EVENTS ON THE BEACH**



MAP

ACCOMMODATIONS

EVENTS

DINING

SPA & FITNESS

POOL & THE BEACH

AUDIO VISUAL



## AUDIO VISUAL

Encore offers the latest audiovisual equipment and innovative event technology services, such as developing customized mobile express apps for smart phones, global video conferencing, and extended bandwidth for your meeting or event.

## ENCORE CONTACT

**HECTOR VILLALOBOS**

Director of Event Technology  
Encore Presentation Services

 [hector.villalobos@encoreglobal.com](mailto:hector.villalobos@encoreglobal.com)  310.469.8539



CASA DEL MAR<sup>®</sup>  
HOTEL BY THE SEA



1910 Ocean Way, Santa Monica, CA 90405  
310.581.5533 Reservations  
[HotelCasaDelMar.com](http://HotelCasaDelMar.com)

*etc*  
HOTELS

LEGEND  
*Preferred*  
HOTELS & RESORTS