



CASA DEL MAR

HOTEL BY THE SEA

MEDITERRANEAN-INSPIRED LUXURY

ENTER



1910 Ocean Way, Santa Monica, CA 90405 | 310.581.5533 Reservations | HotelCasaDelMar.com

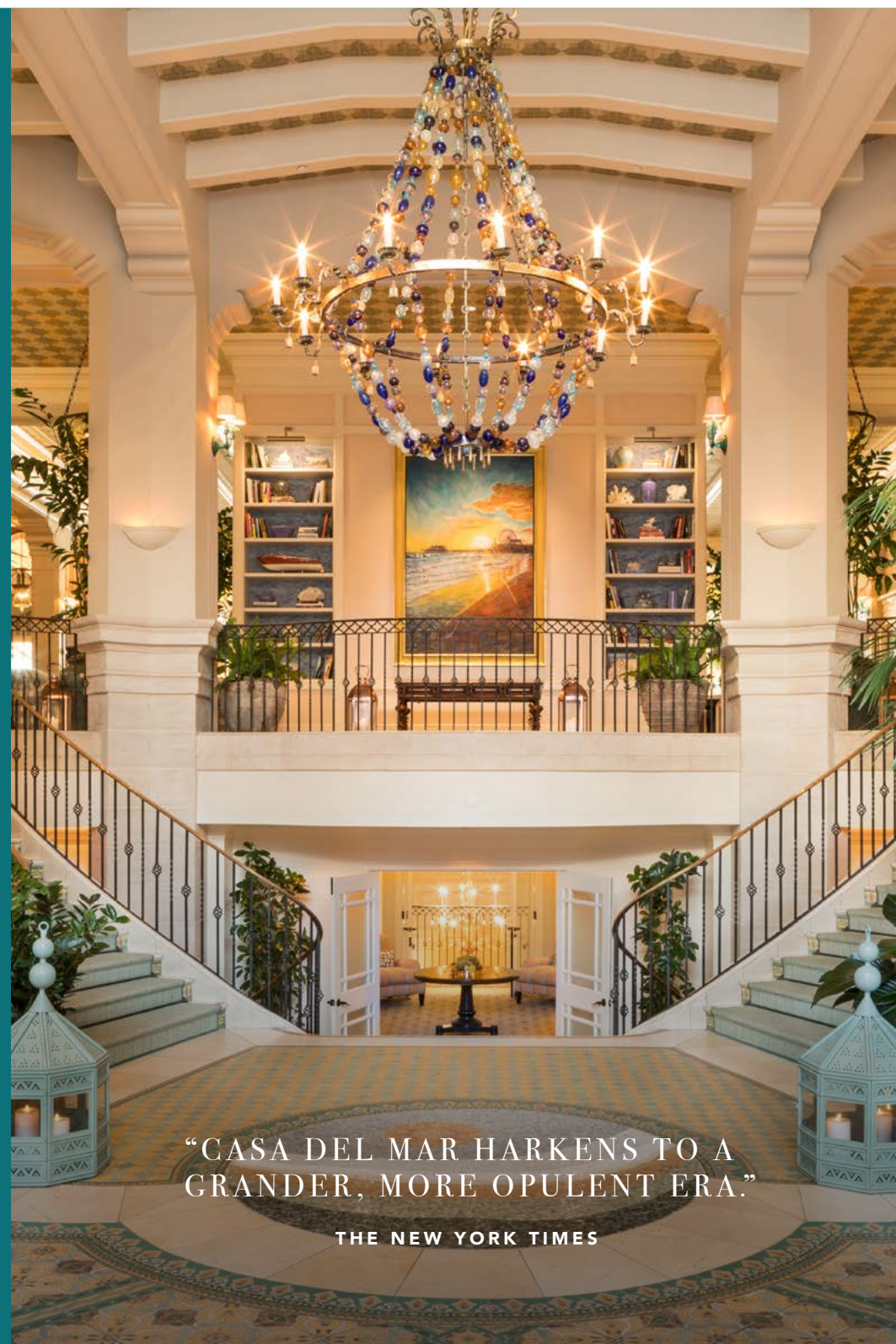
etc
HOTELS

LEGEND
Preferred
HOTEL & RESORTS



DISCOVER CASA

MAP
ACCOMMODATIONS
EVENTS
DINING
SPA & FITNESS
POOL & THE BEACH
AUDIO VISUAL



“CASA DEL MAR HARKENS TO A
GRANDER, MORE OPULENT ERA.”

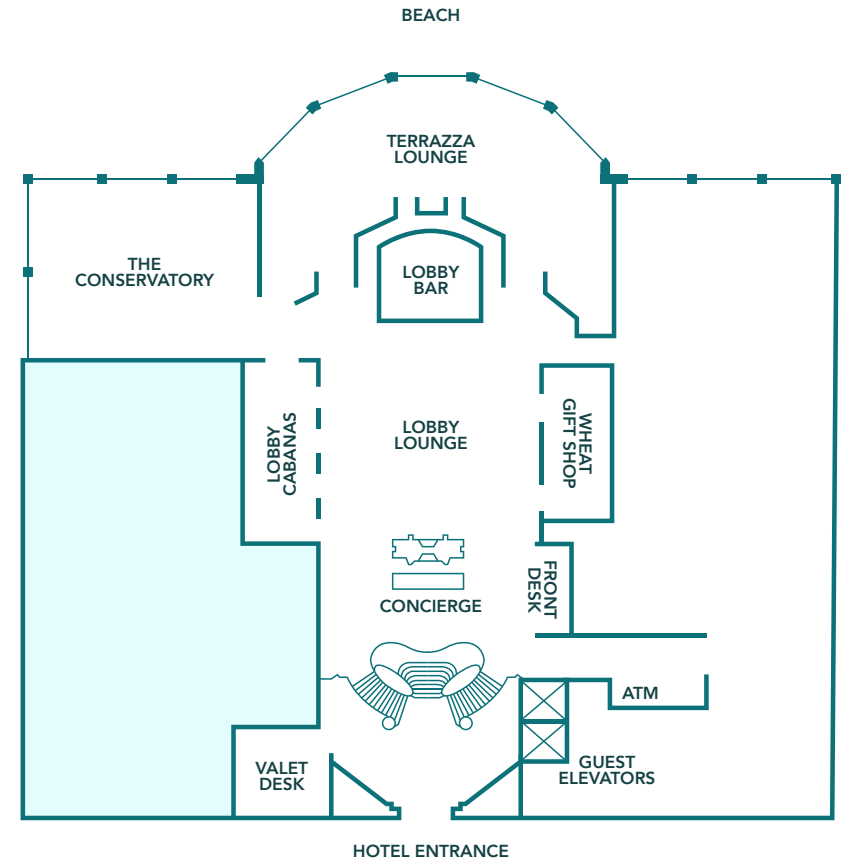
THE NEW YORK TIMES

[MAP](#)[ACCOMMODATIONS](#)[EVENTS](#)[DINING](#)[SPA & FITNESS](#)[POOL & THE BEACH](#)[AUDIO VISUAL](#)

DISCOVER CASA DEL MAR



Located on the world-renowned Santa Monica Beach, walking distance to Santa Monica Pier and shopping on Abbot Kinney Boulevard and Montana Avenue.



129
GUESTROOMS

16
SUITES



RESTAURANTS

Terrazza, The Lobby Lounge,
& seasonal al fresco bistro,
Patio Del Mar



**SEA WELLNESS SPA
FITNESS CENTER**



**VALET PARKING
EXCLUSIVELY**



8
MILES TO LAX &
BEVERLY HILLS

15
MILES TO
DOWNTOWN LA

LOBBY CABANAS & BAR



**OUTDOOR HEATED POOL
WHIRLPOOL SPA
BEACH ACTIVITY CENTER**



MAP

ACCOMMODATIONS

EVENTS

DINING

SPA & FITNESS

POOL & THE BEACH

AUDIO VISUAL

ACCOMMODATIONS

MEDITERRANEAN-INSPIRED LUXURY



KING BED



PALM TERRACE KING



DOUBLE BED



SANTA MONICA SUITES



OCEAN VIEW SUITES



PENTHOUSE SUITES



PACIFIC VIEW SUITES



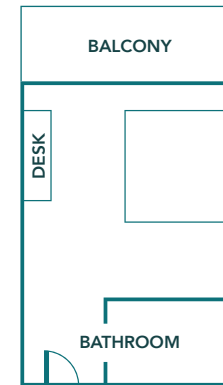
[MAP](#)[ACCOMMODATIONS](#)[EVENTS](#)[DINING](#)[SPA & FITNESS](#)[POOL & THE BEACH](#)[AUDIO VISUAL](#)

NOT TO SCALE

KING BED

*Superior and Deluxe are Non-Ocean View,
Partial Ocean View, Ocean View and Ocean Front Kings*

- 400 Square Feet
- Handcrafted California King Bed with Italian Designed Linen
- Bathroom includes Hydrothermal Massage Tub, and Separate Shower
- Smart TV, Bluetooth Speaker System, and Bedside Control Technology
- Nespresso Coffee Machine
- Signature Dyptique™ Bath Amenities

[MAP](#)[ACCOMMODATIONS](#)[EVENTS](#)[DINING](#)[SPA & FITNESS](#)[POOL & THE BEACH](#)[AUDIO VISUAL](#)

NOT TO SCALE

PALM TERRACE KING

Outdoor Patio, Non-Ocean View

- 400 Square Feet
- Handcrafted California King Bed with Italian Designed Linen
- Bathroom includes Hydrothermal Massage Tub, and Separate Shower
- Smart TV, Bluetooth Speaker System, and Bedside Control Technology
- Nespresso Coffee Machine
- Outdoor Patio, opening onto Pool Deck
- Signature Dyptique™ Bath Amenities

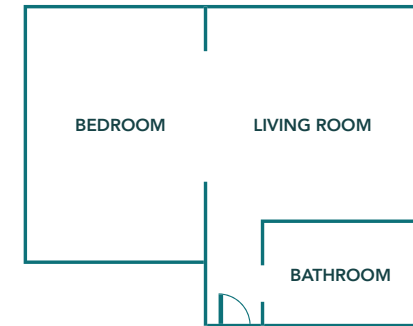
[MAP](#)[ACCOMMODATIONS](#)[EVENTS](#)[DINING](#)[SPA & FITNESS](#)[POOL & THE BEACH](#)[AUDIO VISUAL](#)

NOT TO SCALE

DOUBLE BED

Superior and Deluxe Doubles are Non-Ocean View

- 400 Square Feet
- Handcrafted Two Double Beds with Italian Designed Linen
- Bathroom includes Hydrothermal Massage Tub, and Separate Shower
- Smart TV, Bluetooth Speaker System, and Bedside Control Technology
- Nespresso Coffee Machine
- Signature Dyptique™ Bath Amenities

[MAP](#)[ACCOMMODATIONS](#)[EVENTS](#)[DINING](#)[SPA & FITNESS](#)[POOL & THE BEACH](#)[AUDIO VISUAL](#)

NOT TO SCALE

SANTA MONICA SUITES

One Bedroom

- 600 Square Feet
- Santa Monica City Views (non-ocean view)
- Bedroom features Handcrafted California King Bed with Italian Designed Linen
- Italian Marble Bathroom featuring Bidet, Hydrothermal Massage Tub, and Separate Shower
- Living Room with Pull Out Sofa and Writing Desk
- Smart TVs, Bluetooth Speaker System, and Bedside Control Technology
- Nespresso Coffee & Espresso Machine
- Signature Dyprique™ Bath Amenities

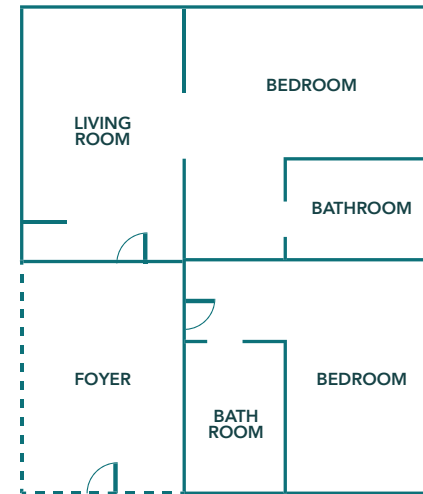
[MAP](#)[ACCOMMODATIONS](#)[EVENTS](#)[DINING](#)[SPA & FITNESS](#)[POOL & THE BEACH](#)[AUDIO VISUAL](#)

NOT TO SCALE

OCEAN VIEW SUITES

One Bedroom

- 700 Square Feet
- Panoramic Views of the Coastline and Santa Monica Beach
- Bedroom features Handcrafted California King Bed with Italian Designed Linen
- Italian Marble Bathroom featuring Bidet, Hydrothermal Massage Tub, and Separate Shower
- Living Room with Pull Out Sofa and Writing Desk
- Smart TVs, Bluetooth Speaker System, and Bedside Control Technology
- Nespresso Coffee & Espresso Machine
- Signature Dyptique™ Bath Amenities

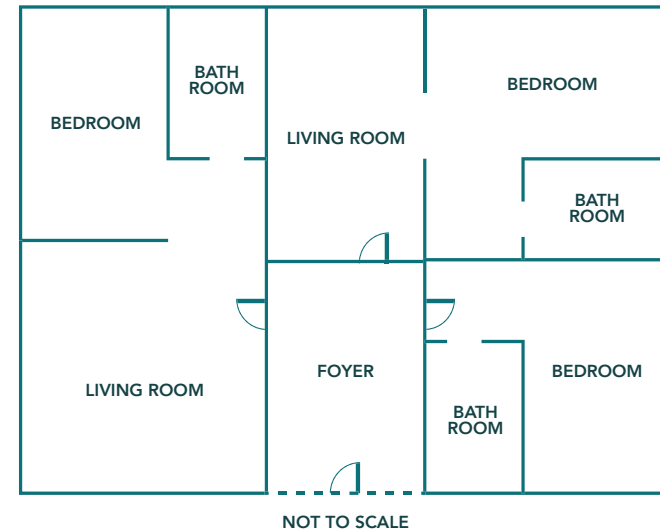
[MAP](#)[ACCOMMODATIONS](#)[EVENTS](#)[DINING](#)[SPA & FITNESS](#)[POOL & THE BEACH](#)[AUDIO VISUAL](#)

NOT TO SCALE

OCEAN VIEW SUITES

Two Bedroom

- 1,100 Square Feet
- Panoramic Views of the Coastline and Santa Monica Beach
- Two Adjoining Rooms Connected by Foyer
- Bedrooms featuring Handcrafted California King Beds with Italian Designed Linen
- Two Italian Marble Bathrooms featuring Bidet, Hydrothermal Massage Tubs, and Separate Showers
- Living Room with Pull Out Sofa and Writing Desk
- Smart TVs, Bluetooth Speaker System, and Bedside Control Technology
- Nespresso Coffee & Espresso Machine
- Signature Dyptique™ Bath Amenities

[MAP](#)[ACCOMMODATIONS](#)[EVENTS](#)[DINING](#)[SPA & FITNESS](#)[POOL & THE BEACH](#)[AUDIO VISUAL](#)

OCEAN VIEW SUITES

Three Bedroom

- 1,700 Square Feet
- Panoramic Views of the Coastline and Santa Monica Beach
- Two Living Rooms with Fireplaces, Pull Out Sofas and Writing Desks
- Three Adjoining Rooms Connected by Foyer
- Bedrooms featuring Handcrafted California King Beds with Italian Designed Linen
- Three Italian Marble Bathrooms featuring Bidet, Hydrothermal Massage Tubs, and Separate Showers
- Smart TVs, Bluetooth Speaker System, and Bedside Control Technology
- Nespresso Coffee & Espresso Machine
- Signature Dyptique™ Bath Amenities



MAP

ACCOMMODATIONS

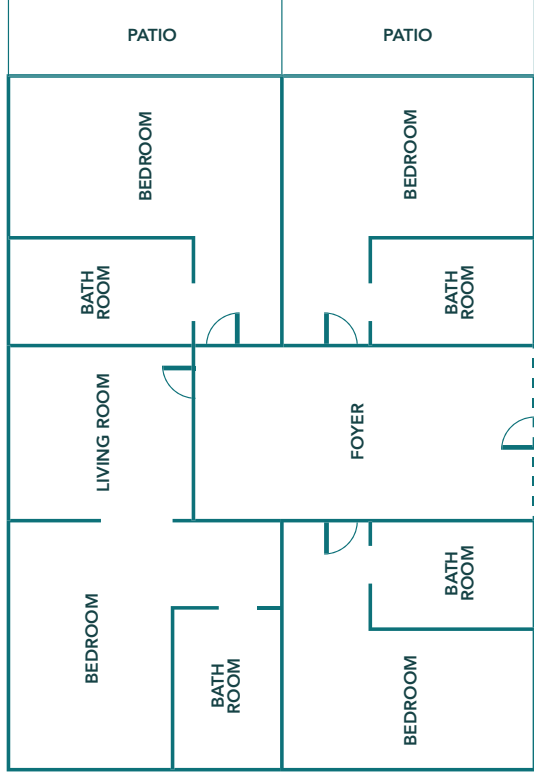
EVENTS

DINING

SPA & FITNESS

POOL & THE BEACH

AUDIO VISUAL

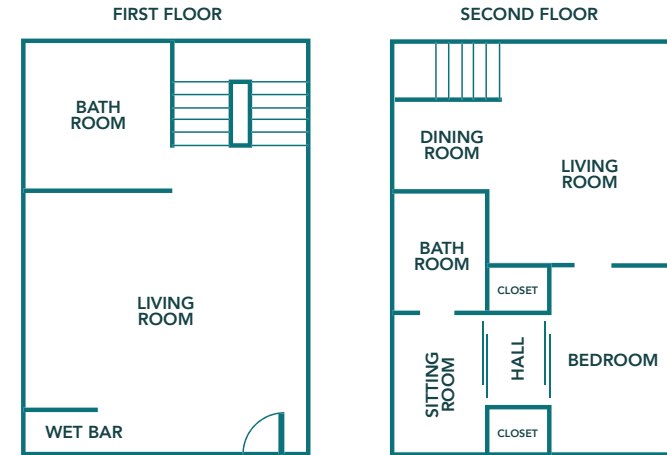


NOT TO SCALE

OCEAN VIEW SUITES

Four Bedroom

- 1,900 Square Feet
- Panoramic Views of the Coastline and Santa Monica Beach
- Four Adjoining Rooms Connected by Foyer
- Two Outdoor Patios
- Bedrooms featuring Handcrafted California King Beds with Italian Designed Linen
- Four Italian Marble Bathrooms featuring Bidet, Hydrothermal Massage Tubs, and Separate Showers
- Smart TVs, Bluetooth Speaker System, and Bedside Control Technology
- Nespresso Coffee & Espresso Machine
- Signature Dyptique™ Bath Amenities

[MAP](#)[ACCOMMODATIONS](#)[EVENTS](#)[DINING](#)[SPA & FITNESS](#)[POOL & THE BEACH](#)[AUDIO VISUAL](#)

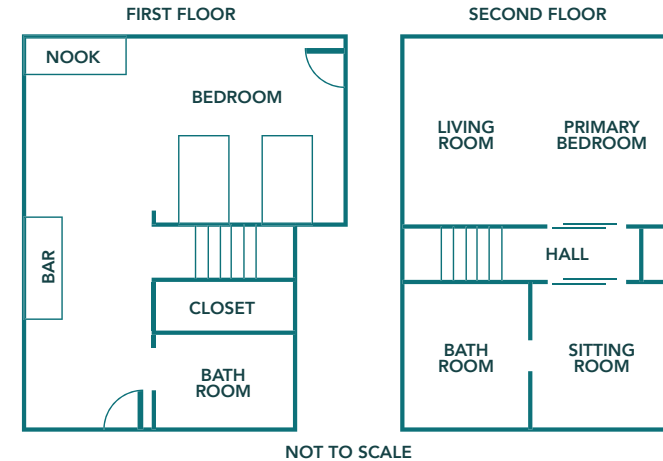
NOT TO SCALE

PENTHOUSE 801

One Bedroom Penthouse Suite



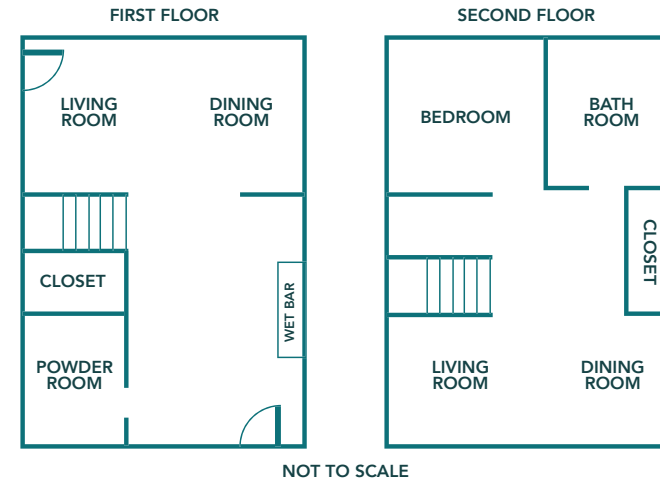
- 1,500 Square Feet
- Panoramic Views of the Coastline and Santa Monica Beach
- Located on the Top Floor of the Hotel
- Two Floors
- Bedroom features Handcrafted California King Bed with Italian Designed Linen
- Two Italian Marble Bathrooms featuring Bidet, Hydrothermal Massage Tub, and Separate Shower in Primary Bath
- Downstairs Sitting Room with Pull Out Sofa
- Wet Bar with Wine Fridge
- Upstairs Living Room with Pull Out Sofa and Writing Desk
- Separate Dining Area
- Smart TVs, Bluetooth Speaker System, and Bedside Control Technology
- Nespresso Coffee & Espresso Machine
- Signature Dyptique™ Bath Amenities

[MAP](#)[ACCOMMODATIONS](#)[EVENTS](#)[DINING](#)[SPA & FITNESS](#)[POOL & THE BEACH](#)[AUDIO VISUAL](#)

PENTHOUSE 802

Two Bedroom Penthouse Suite

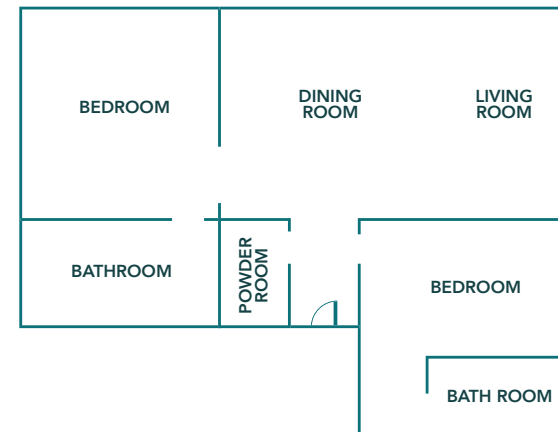
- 1,450 Square Feet
- Panoramic Views of the Coastline and Santa Monica Beach
- Located on the Top Floor of the Hotel
- Two Floors
- Resting Nook with Skylight
- Primary Bedroom features Handcrafted California King Bed with Italian Designed Linen
- Second Bedroom features Two Double Beds with Italian Designed Linen
- Two Italian Marble Bathrooms featuring Bidet, Hydrothermal Massage Tub, and Separate Shower in Primary Bath
- Wet Bar with Wine Fridge
- Upstairs Living Room and Dining Area with Pull Out Sofa and Fireplace
- Connects to One Bedroom Penthouse Suite to make a Three Bedroom Suite
- Smart TVs, Bluetooth Speaker System, and Bedside Control Technology
- Nespresso Coffee & Espresso Machine
- Signature Dyptique™ Bath Amenities



PENTHOUSE 803

One Bedroom Penthouse Suite

- 1,500 Square Feet
- Panoramic Views of the Coastline and Santa Monica Beach
- Located on the Top Floor of the Hotel
- Two Floors
- Resting Nook with Skylight
- Bedroom features Handcrafted California King Bed with Italian Designed Linen
- Two Italian Marble Bathrooms featuring Bidet, Hydrothermal Massage Tub, and Separate Shower in Primary Bath
- Downstairs Dining Room and Living Room with Pull Out Sofa
- Wet Bar with Wine Fridge
- Upstairs Living Room and Dining Area with Pull Out Sofa and Fireplace
- Connects to Two Bedroom Penthouse Suite
- Smart TVs, Bluetooth Speaker System, and Bedside Control Technology
- Nespresso Coffee & Espresso Machine
- Signature Dyptique™ Bath Amenities

[MAP](#)[ACCOMMODATIONS](#)[EVENTS](#)[DINING](#)[SPA & FITNESS](#)[POOL & THE BEACH](#)[AUDIO VISUAL](#)

NOT TO SCALE

PACIFIC VIEW SUITE

- 1,800 Square Feet
- Full Views of the Ocean, California Coastline and Santa Monica Pier
- Two Fireplaces
- Two Primary Bedrooms featuring Handcrafted California King Beds with Italian Designed Linen
- 2½ Italian Marble Bathrooms featuring Bidet, Hydrothermal Massage Tub, and Separate Showers in Primary Baths
- Living Room and Dining Room with Fireplace, Pull Out Sofa, Dining Table and Writing Desk
- Smart TVs, Bluetooth Speaker System, and Bedside Control Technology
- Nespresso Coffee & Espresso Machine
- Signature Dyptique™ Bath Amenities



MAP

ACCOMMODATIONS

EVENTS

DINING

SPA & FITNESS

POOL & THE BEACH

AUDIO VISUAL

EVENT SPACES

A VARIETY OF INDOOR AND OUTDOOR EVENT SPACES ARE
PERFECT FOR ANY MEETING, WEDDING OR SOCIAL OCCASION...
JUST STEPS FROM THE SAND



COLONNADE BALLROOM



CRIMSON ROOM & BOARDROOM



THE CONSERVATORY



CABANAS



PALM TERRACE



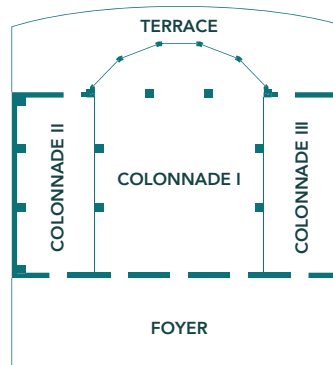
INDIGO ROOM



COLONNADE BALLROOM

The only ballroom in Los Angeles located right on the beach, Colonnade is a breathtaking backdrop for Cocktail Receptions, Dinners, Wedding Ceremonies and Meetings.

- Ballroom Divides into Three Sections, featuring Natural Light and 13' Ceilings
- Two Foyers offering Ample Pre-function Space
- Private Outdoor Terrace for Receptions
- Music Amplification Not Permitted Outdoors



	COLONNADE BALLROOM	COLONNADE I	COLONNADE II	COLONNADE III	COLONNADE FOYER	COLONNADE TERRACE
DIMENSIONS	82' x 71'	48' x 71'	16' x 60'	16' x 60'	19.5' x 82'	75' x 12'
SQ FT	5,800	3,400	960	960	1,599	900
CEILING	13'	13'	8'	8'	13'	16'
CLASSROOM	225	160	36	36		
CONFERENCE	50	50	50	50		
SQUARE	78	78	48	48		
U-SHAPE	66	66	45	45		
ROUNDS	360	200	60	60		60
THEATER	375	280	60	60		
RECEPTION	600	330	100	100		75
ROUNDS W/ DANCE FLOOR	312	190				

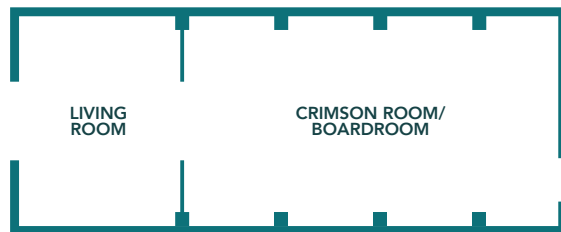




CRIMSON ROOM & BOARDROOM

Smaller breakout rooms featuring modern décor and adjacent "living rooms" that are perfect for pre-function space or meal displays.

- Boardroom features a Fixed Boardroom Table and Boardroom-style Chairs for 16 People
- An Additional Foyer adjoins the Two Spaces
- Rooms can be used Together or Separately



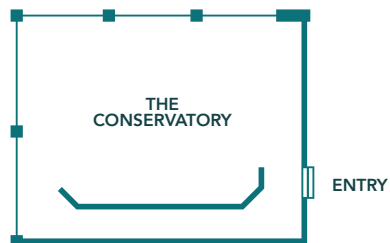
	CRIMSON ROOM	CRIMSON LIVING ROOM
DIMENSIONS	17.5' x 33'	20.5' x 16'
SQ FT	580	330
CEILING	8'5"	8'5"
CLASSROOM	30	—
CONFERENCE	24	—
SQUARE	30	—
U-SHAPE	27	—
ROUNDS	50	—
THEATER	60	—
RECEPTION	50	20



[MAP](#)[ACCOMMODATIONS](#)[EVENTS](#)[DINING](#)[SPA & FITNESS](#)[POOL & THE BEACH](#)[AUDIO VISUAL](#)

THE CONSERVATORY

- Panoramic Views of the Pacific Ocean Boasting Floor-to-ceiling Windows
- Completely Private and can Accommodate up to 96 Seated Guests or 100 Guests for a Reception-style Event



DIMENSIONS	35' x 50'
SQ FT	1,750
CEILING	13'
CLASSROOM	48
CONFERENCE	30
SQUARE	32
U-SHAPE	28
ROUNDS	Existing: 96
THEATER	96
RECEPTION	100
ROUNDS W/ DANCE FLOOR	50



[MAP](#)[ACCOMMODATIONS](#)[EVENTS](#)[DINING](#)[SPA & FITNESS](#)[POOL & THE BEACH](#)[AUDIO VISUAL](#)

LOBBY CABANAS

Four indoor lobby cabanas are perfect for hospitality space, cocktail receptions or as a post-event lounge. Each cabana can seat up to 10 guests, with a maximum capacity of 40 for a standing reception. The cabanas offer the vivacious energy of the hotel lobby and entertainment, while being exclusively removed in semi-private space.

- Private Bar and Bartenders Available
- Bottle Service Offered



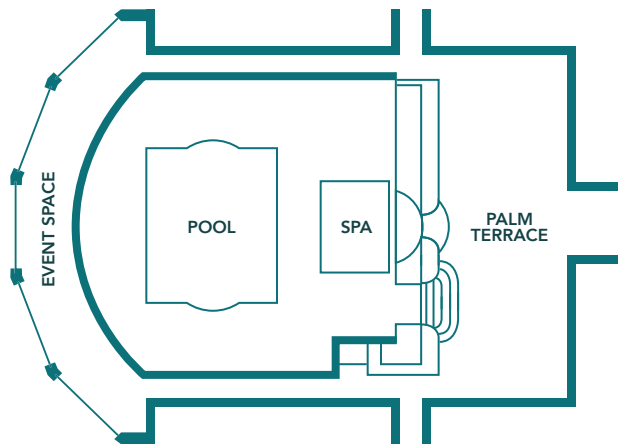
DIMENSIONS	40.5' x 15'
SQ FT	607
RECEPTION	40



[MAP](#)[ACCOMMODATIONS](#)[EVENTS](#)[DINING](#)[SPA & FITNESS](#)[POOL & THE BEACH](#)[AUDIO VISUAL](#)

PALM TERRACE

Framed by California sunsets and tropical palm trees lining Santa Monica Beach, Casa del Mar's Palm Terrace serves great food, better views, and an unforgettable small gathering on the edge of the Pacific.



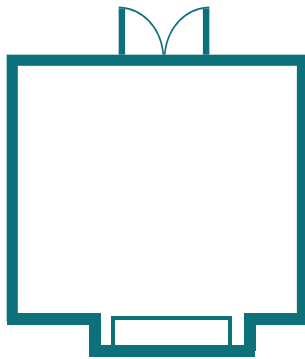
DIMENSIONS	76' x 10'
SQ FT	760
RECEPTION	60
KINGS TABLE	20
ROUNDS	50



[MAP](#)[ACCOMMODATIONS](#)[EVENTS](#)[DINING](#)[SPA & FITNESS](#)[POOL & THE BEACH](#)[AUDIO VISUAL](#)

INDIGO ROOM

Intimate private event space perfect for breakouts or small meetings.



DIMENSIONS	17.5' x 20
SQ FT	350
CEILING	8'
CLASSROOM	18
CONFERENCE	14
SQUARE	18
U-SHAPE	12
ROUNDS	24
THEATER	32
RECEPTION	20



[MAP](#)[ACCOMMODATIONS](#)[EVENTS](#)[DINING](#)[SPA & FITNESS](#)[POOL & THE BEACH](#)[AUDIO VISUAL](#)

DINING

OFFERING BREATHTAKING VIEWS OF THE OCEAN,
THESE RESTAURANTS FEATURE CALIFORNIA-FRESH CUISINE
IN A RELAXED, MEDITERRANEAN-INSPIRED SETTING.



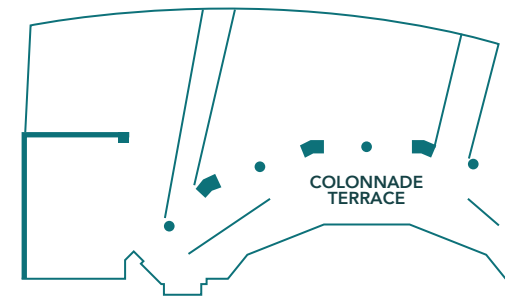
PATIO DEL MAR



TERRAZZA



THE LOBBY LOUNGE

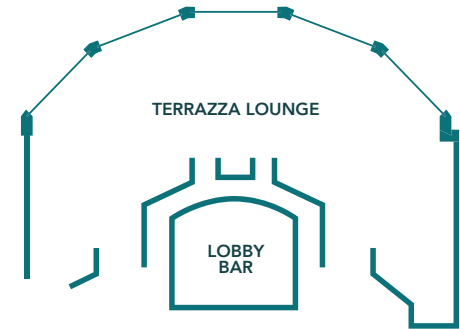
[MAP](#)[ACCOMMODATIONS](#)[EVENTS](#)[DINING](#)[SPA & FITNESS](#)[POOL & THE BEACH](#)[AUDIO VISUAL](#)

PATIO DEL MAR

Reserve a front seat table beachside at the seasonal al fresco bistro, Patio del Mar.

- Open Seasonally, Weather Permitting
- Seats Up to 85 Guests
- Steps from the Beach, it is perfect for a Summer Lunch or Sunset Dinner with Friends
- Available for Private Events



[MAP](#)[ACCOMMODATIONS](#)[EVENTS](#)[DINING](#)[SPA & FITNESS](#)[POOL & THE BEACH](#)[AUDIO VISUAL](#)

TERRAZZA

*Where the Mediterranean Sea meets the Pacific Ocean.
Savor coastal cuisine paired with fine wines,
artisanal cocktails, and stunning sunsets.*

- Open for Breakfast, Lunch, and Dinner Daily
- Weekend Brunch
- Seats Up to 125 Guests



[MAP](#)[ACCOMMODATIONS](#)[EVENTS](#)[DINING](#)[SPA & FITNESS](#)[POOL & THE BEACH](#)[AUDIO VISUAL](#)

THE LOBBY LOUNGE

As the sun sets, the lobby glows with golden hour light and live music fills the air.

- Live Music
- Artisanal Cocktails, Wine, and Light Bites are Served
- Seating on a First-Come First-Served Basis





MAP

ACCOMMODATIONS

EVENTS

DINING

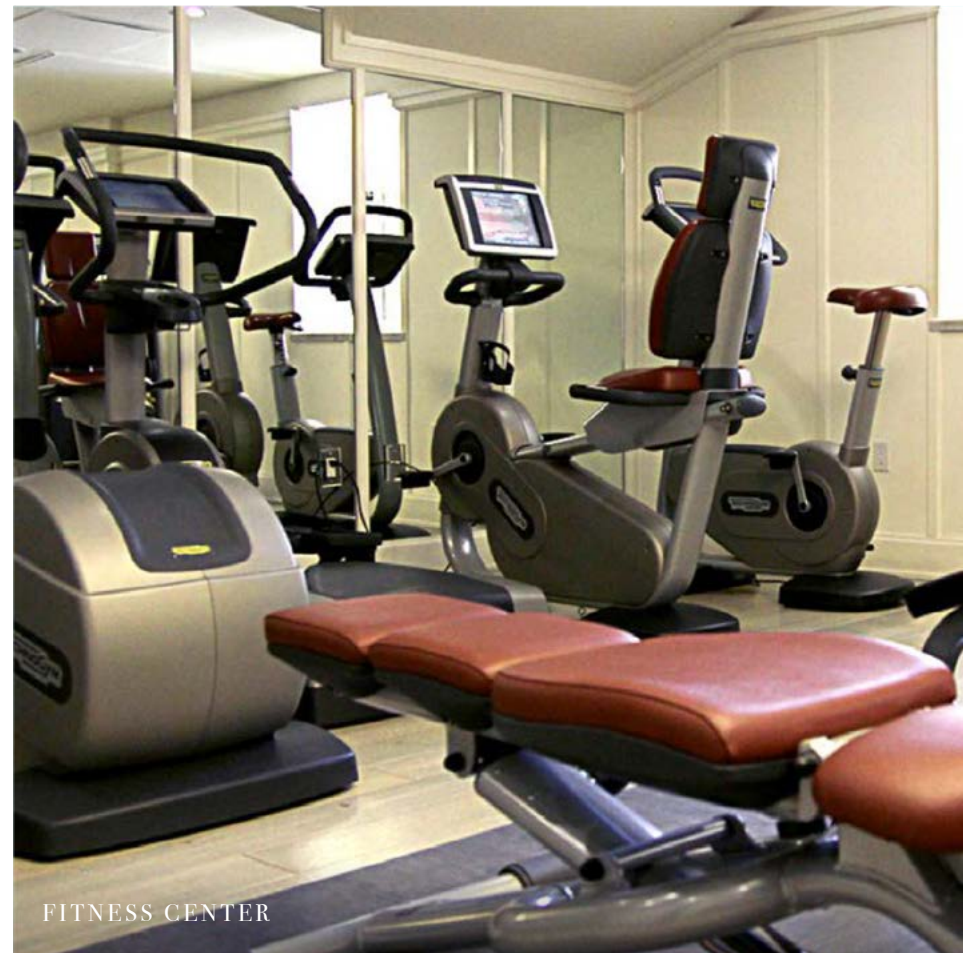
SPA & FITNESS

POOL & THE BEACH

AUDIO VISUAL

SPA & FITNESS

LUXURIOUS TREATMENTS AND STATE OF THE ART EQUIPMENT WILL HELP MAKE WELLNESS A WAY OF LIFE WHILE IN SANTA MONICA.



[MAP](#)[ACCOMMODATIONS](#)[EVENTS](#)[DINING](#)[SPA & FITNESS](#)[POOL & THE BEACH](#)[AUDIO VISUAL](#)

SEA WELLNESS SPA

Eco-friendly Sea Wellness Spa features six multi-purpose treatment rooms and offers luxury skincare, body care and HydraFacial systems. Natural woods and stone combined with subtle tones of sand and sea evoke the healing powers of the Pacific.

- Custom Treatments by Omorovicza and MBR
- Relaxation Lounge and Steam Shower

[SPA MENU](#)

[MAP](#)[ACCOMMODATIONS](#)[EVENTS](#)[DINING](#)[SPA & FITNESS](#)[POOL & THE BEACH](#)[AUDIO VISUAL](#)

FITNESS CENTER

Featuring cardio equipment, resistance machines and free weights, our comprehensive fitness center has everything you need to maintain your workout routine.

- Open 24 hours
- Yoga Classes on the Beach
- Featuring Peloton and Technogym



[MAP](#)[ACCOMMODATIONS](#)[EVENTS](#)[DINING](#)[SPA & FITNESS](#)[POOL & THE BEACH](#)[AUDIO VISUAL](#)

POOL & THE BEACH

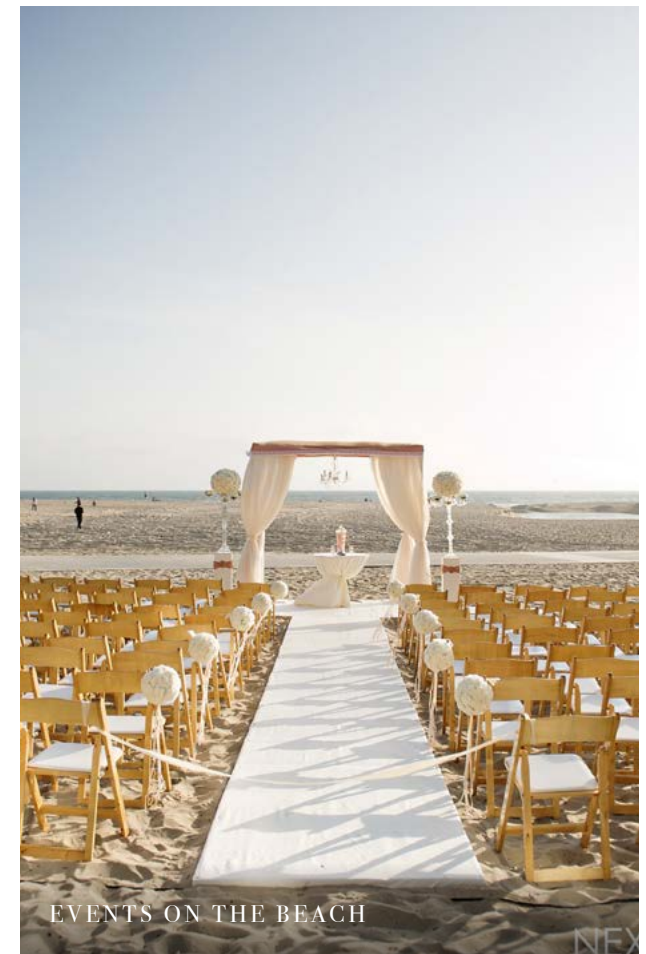
LOCATED JUST STEPS FROM SANTA MONICA'S MOST LUXURIOUS BEACH, ENJOY UNPARALLELED PACIFIC VIEWS FROM THE BEACH AND PRIVATE POOL DECK.



THE POOL



BEACH CONCIERGE



EVENTS ON THE BEACH

NEX

[MAP](#)[ACCOMMODATIONS](#)[EVENTS](#)[DINING](#)[SPA & FITNESS](#)[POOL & THE BEACH](#)[AUDIO VISUAL](#)

THE POOL

Lounge, swim, and soak up the sun on the pool terrace overlooking the ocean. Food and beverage services and heated whirlpool also available.

- Open Seasonally from 6:00 a.m. to 10:00 p.m.
- Offering Views of the Beach and the Santa Monica Pier
- Palm Terrace Patio may be Reserved for Private Events



[MAP](#)[ACCOMMODATIONS](#)[EVENTS](#)[DINING](#)[SPA & FITNESS](#)[POOL & THE BEACH](#)[AUDIO VISUAL](#)

BEACH CONCIERGE

Located next door in front of our sister property, Shutters on the Beach, our friendly beach concierge is here to assist with every need. They can arrange for beach chairs and umbrellas, bicycle rentals, surf lessons or boogie boards. Offering a beachside refreshment menu to enjoy while on the sand.

- Surf Lessons
- Bike Rentals
- Beach Chairs and Umbrellas



[MAP](#)[ACCOMMODATIONS](#)[EVENTS](#)[DINING](#)[SPA & FITNESS](#)[POOL & THE BEACH](#)[AUDIO VISUAL](#)

EVENTS ON THE BEACH

Wedding ceremonies and meetings are permitted on the beach in front of the hotel. Our Catering and Events Team are happy to arrange a breathtaking event.

EVENTS ON THE BEACH



[MAP](#)[ACCOMMODATIONS](#)[EVENTS](#)[DINING](#)[SPA & FITNESS](#)[POOL & THE BEACH](#)[AUDIO VISUAL](#)

AUDIO VISUAL

Encore offers the latest audiovisual equipment and innovative event technology services, such as developing customized mobile express apps for smart phones, global video conferencing, and extended bandwidth for your meeting or event.

ENCORE CONTACT

HECTOR VILLALOBOS

Director of Event Technology
Encore Presentation Services

 hector.villalobos@encoreglobal.com  310.469.8539



CASA DEL MAR®
HOTEL BY THE SEA



1910 Ocean Way, Santa Monica, CA 90405
310.581.5533 Reservations
HotelCasaDelMar.com

etc
HOTELS

LEGEND
Preferred
HOTELS & RESORTS