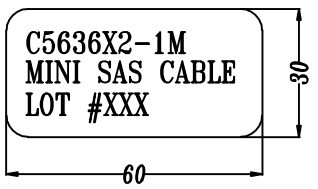
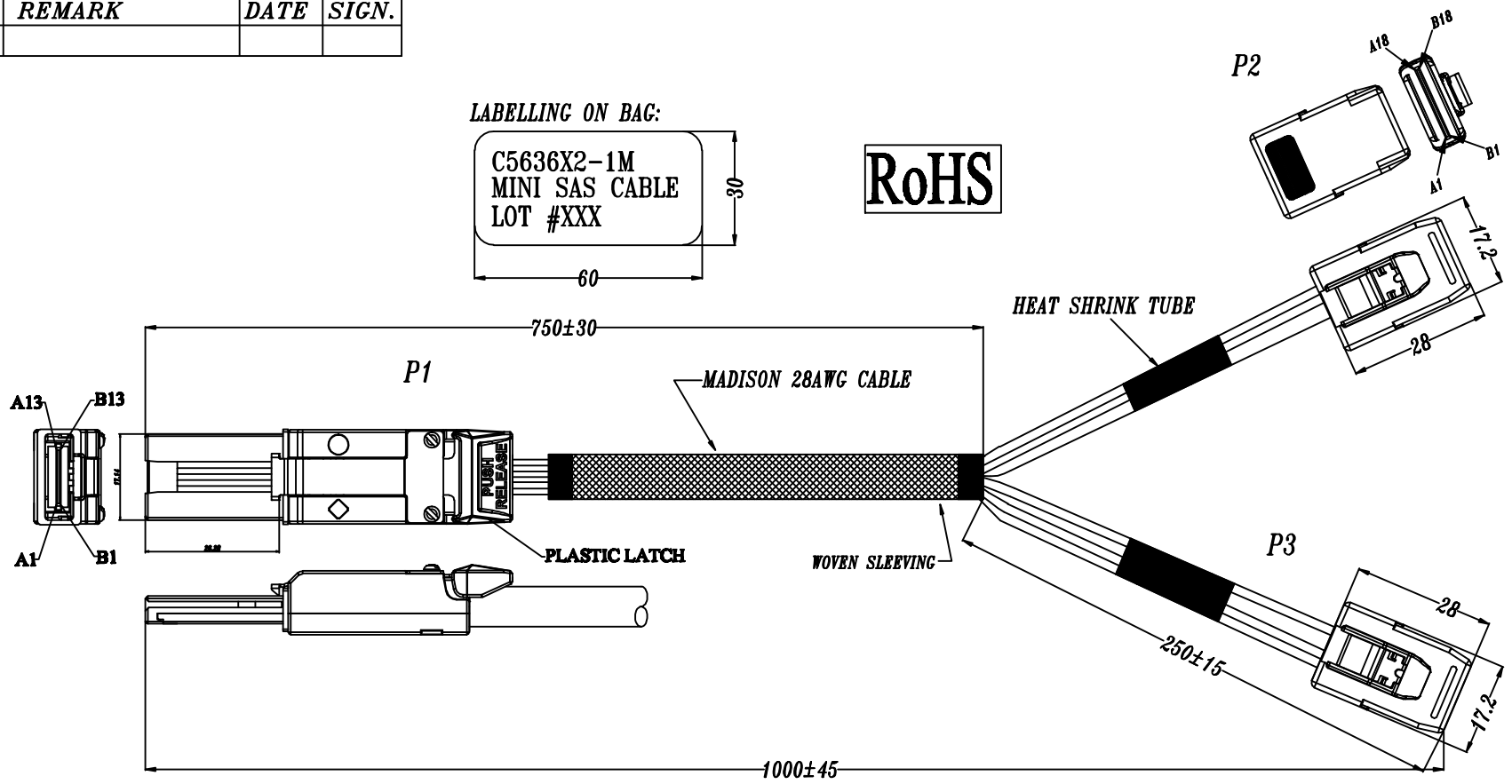


1	2	3	4	5	6	7	8	9
REV.	REMARK	DATE	SIGN.					

LABELLING ON BAG:



RoHS



MATERIAL RoHS COMPLIANT:

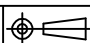
CABLE:
ELECTRICAL:
 IMPEDANCE: 100±5 ohm(DIFFERENTIAL TDR)
 CAPACITANCE: 14pF/ ft NOMINAL
 TIME DELAY: 1.35ns/ ft NOMINAL
 SKEW(WITHIN PAIR): ≤120ps/ 7M MAXIMUM
 ATTENUATION (NOMINAL): 10 dB/ 7M MAXIMUM @1.25GHz
APPROVALS:
 UL AWM VW-1 80°C 30V, RoHS COMPLIANT, MADISON 28 AWG

CONNECTOR:

- P1: Mini SAS 4X CABLE PLUG - 26CKT CONNECTOR (SFF-8088)
 (1) P.C.B: FR4, 4 LAYERS
 (2) LATCH: STAINLESS STEEL
 (3) BACKSHELL- ZINC DIE CASTING HOOD/ NICKEL PLATING
 (4) WITH EXTERNAL UNIVERSAL KEY
 P2&P3: Mini SAS 4i CABLE PLUG - 36CKT CONNECTOR (SFF-8087)
 1. HOOD: NYLON 30% GLASS FIBRE
 2. LATCH: STAINLESS STEEL
 3. P.C.B.: FR4
 4. INTERNAL, W/O SIDEBAND.

DataStorageCables.com

DESC.	Mini SAS 4X TO Mini SAS 4i *2	APPROVED	CHECKED	DESIGNED	TOLERANCE	SCALE	1 = 1	UNIT	mm	⊕
P/N	C5636X2-1M	CUSTOMER P/N	C5636X2-1M	SHIU		DATE	03/13/08	DWG NO:	DWG	RC\2761

1	2		3		4	5	6				
<i>REV.</i>	<i>REMARK</i>		<i>DATE</i>	<i>SIGN.</i>							
<i>I</i>								<i>I</i>			
<i>H</i>								<i>H</i>			
<i>G</i>	WIRING DIAGRAM							<i>G</i>			
<i>F</i>	Mini SAS 4x			MINI SAS 4i				<i>F</i>			
<i>E</i>	PLUG	PIN	SIGNAL	PLUG	PIN	SIGNAL		<i>E</i>			
<i>D</i>	P1	B2	TX0+	P2	A2	RX0+		<i>D</i>			
		B3	TX0-		A3	RX0-					
		B5	TX1+		A5	RX1+					
		B6	TX1-		A6	RX1-					
		A2	RX0+		B2	TX0+					
		A3	RX0-		B3	TX0-					
		A5	RX1+	B5	TX1+						
		A6	RX1-	B6	TX1-						
		GND GROUP	GND	GND GROUP	GND						
		A8	TX2+	P3	A2	RX0+					
		A9	TX2-		A3	RX0-					
		A11	TX3+		A5	RX1+					
	A12	TX3-	A6		RX1-						
	B8	RX2+	B2		TX0+						
	B9	RX2-	B3		TX0-						
	B11	RX3+	B5	TX1+							
	B12	RX3-	B6	TX1-							
	GND GROUP	GND	GND GROUP	GND							
<i>C</i>	P1 GND GROUP: A1,A4,A7,A10,A13 B1,B4,B7,B10,B13			P2,P3 GND GROUP: A1,4,7,12,15,18 B1,4,7,12,15,18				<i>C</i>			
<i>B</i>								<i>B</i>			
<i>A</i>	DataStorageCables.com			<i>DESC.</i> Mini SAS 4X TO Mini SAS 4i *2					<i>A</i>		
				<i>P/N</i> C5636X2-1M	<i>CUSTOMER P/N</i> C5636X2-1M						
				<i>APPROVED</i>	<i>CHECKED</i>	<i>DESIGNED</i> SHIU	<i>TOLERANCE</i>	<i>SCALE</i> 1 = 1	<i>UNIT</i> mm		
								<i>DATE</i> 03/13/08	<i>DWG NO:</i> DWG\RC\2761		
<i>1</i>	<i>2</i>	<i>3</i>	<i>4</i>	<i>5</i>	<i>6</i>						