

Player report

Delaware

-

North Carolina

3

2





Player report

Delaware [3 - 2] North Carolina

Round 1

Sunday, November 20, 2016 8:00 PM

ORTC/TSS

Pass Matrix

Delaware

	Taylor Lister	Emmeline Oltmans	Esmee Peet	Lisa Giezeman	Kayla Devlin	Kiki Bink	Marjelle Scheffers	Maura Zarkoski	Sarah Horgan	Meghan Winesett	Greta Nauck	Ally Pollak	Lauren Crudele	Not completed	% completed	Total
Taylor Lister			1			1			1		3	2		3	73%	11
Emmeline Oltmans					1	1								0	100%	2
Esmee Peet	1			1			2	2			1		1	13	38%	21
Lisa Giezeman			1				1	1						2	60%	5
Kayla Devlin	2		1			2	9	3	5		3	1		6	81%	32
Kiki Bink	1				1		2	1			1		1	11	39%	18
Marjelle Scheffers			1	1	4		11	2	1	2	4			8	76%	34
Maura Zarkoski			2	2	3	1	1			2	2			8	62%	21
Sarah Horgan	2		1		5	3				1	2	1		6	71%	21
Meghan Winesett												1	1	2	50%	4
Greta Nauck	1		3	2	1		1	1						4	71%	14
Ally Pollak											1		1	2	50%	4
Lauren Crudele	1		3											0	100%	4
Total	8	0	13	6	15	8	16	19	8	5	15	9	4			

North Carolina

	Shannon Johnson	Lauren Moyer	Sam Night	Eef Andriessen	Ashley Hofmann	Emma Bozek	Malin Evert	Julia Young	Morgan Goetz	Eva van't Hoog	Gab Major	Catherine Hayden	Megan DuVernois	Marissa Creatore	Not completed	% completed	Total
Shannon Johnson									1						1	50%	2
Lauren Moyer										1					3	25%	4
Sam Night				3	5	3	1		1						3	81%	16
Eef Andriessen			2		2	3	1		2	3	1		1		15	50%	30
Ashley Hofmann			2	2		5	10	3	3	16		2	1		15	75%	59
Emma Bozek	1	1	2	3	2		2	1	1	2			1	2	5	78%	23
Malin Evert				1	1	3		1	2	6			1	1	12	57%	28
Julia Young				1	4		2		1	2				1	0	100%	11
Morgan Goetz				4	6	1		1		5		1			8	69%	26
Eva van't Hoog		2	4	5	8	5	12	2	5		2	1	2	2	12	81%	62
Gab Major															2	-	2
Catherine Hayden		1		1		1									1	75%	4
Megan DuVernois									1	2				1	5	44%	9
Marissa Creatore		1				1		1							1	75%	4
Total	1	5	10	20	28	22	28	9	17	37	3	4	7	6			



Player report

Delaware [3 - 2] North Carolina

Round 1

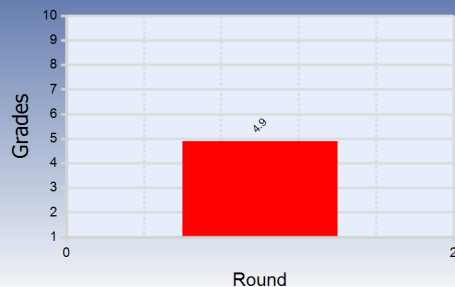
Sunday, November 20, 2016 8:00 PM

ORTeC/TSS

North Carolina

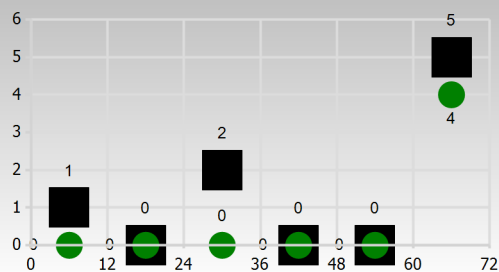
31. Shannon Johnson

Grade per match



Goal attempts / Goals	0 / 0
Fouls Committed / Suffered	0 / 0
Actions / Successful (%)	8 / 4 (50%)
Passes / Successful (%)	2 / 2 (100%)
Attacking Actions / Successful (%)	0 / 0 (0%)
Defending Actions: Lost/Play stopped/Won	0 / 0 / 0

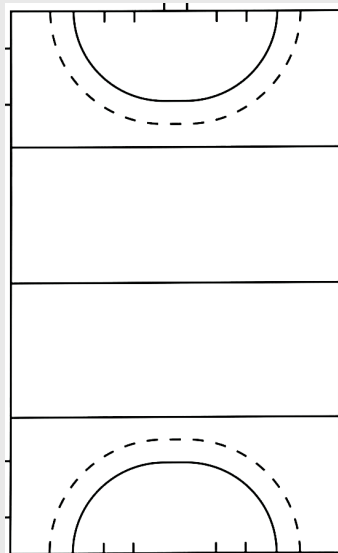
Actions per quarter



Total actions

Successful actions

In Possession



Action	Sub type amount	Total	% Sub type
--------	-----------------	-------	------------

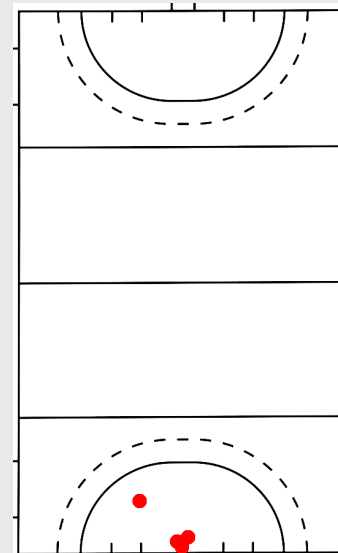
Legend

Circle	Direct ball loss actions
Triangle	Indirect ball loss actions
Square	Effective actions

	Grade						Ball loss			Effective		
Action	1	2	3	4	5	Total	% Direct Ball Loss	% Indirect Ball Loss	% neutral	% Indirect effective	% Direct effective	% Successful
In possession												
free hit self pass	0	0	1	0	0	1	0%	0%	100%	0%	0%	100%
pass	0	0	2	0	0	2	0%	0%	100%	0%	0%	100%
reception	0	0	1	0	0	1	0%	0%	100%	0%	0%	100%
Total in pos.	0	0	4	0	0	4	0%	0%	100%	0%	0%	100%

	Grade						Ineffective actions			Ball Gain		
Action	1	2	3	4	5	Total	% Direct Ineffective	% Indirect Ineffective	% neutral	% Indirect possession	% Direct ball gain	% Successful
Not in possession												
interception	0	1	0	0	0	1	100%	0%	0%	0%	0%	0%
save on goal attempt	0	3	0	0	0	3	100%	0%	0%	0%	0%	0%
Total not in pos.	0	4	0	0	0	4	100%	0%	0%	0%	0%	0%

Not in Possession



Action	Sub type amount	Total	% Sub type
--------	-----------------	-------	------------

Ineffective actions

interception	1	1	100%
save on goal attempt	3	3	100%

Legend

Circle	Ineffective actions
Triangle	Indirect ball gain actions
Square	Direct ball gain actions



Player report

Delaware [3 - 2] North Carolina

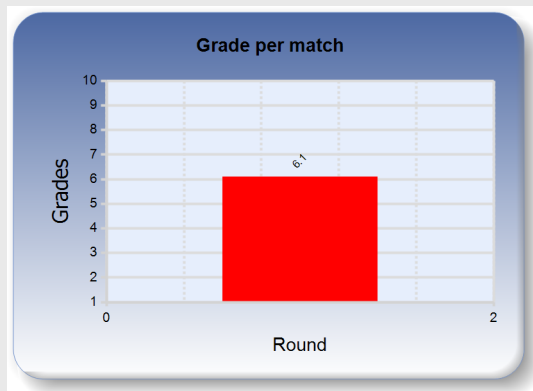
Round 1

Sunday, November 20, 2016 8:00 PM

ORTec/TSS

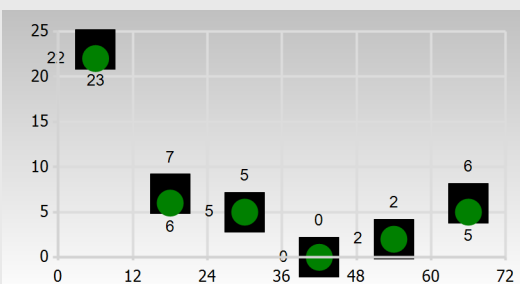
North Carolina

5. Sam Night



Goal attempts / Goals	0 / 0
Fouls Committed / Suffered	2 / 3
Actions / Successful (%)	43 / 40 (93%)
Passes / Successful (%)	16 / 15 (94%)
Attacking Actions / Successful (%)	3 / 2 (67%)
Defending Actions: Lost/Play stopped/Won	0 / 0 / 0

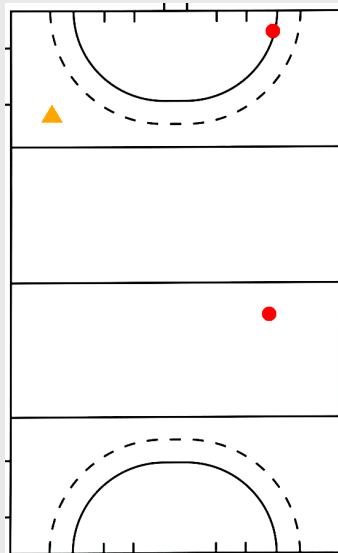
Actions per quarter



Total actions

Successful actions

In Possession



Action	Sub type amount	Total	% Sub type
Direct ball loss actions			
attacking action	1	3	33%
pass	1	16	6%
Indirect ball loss actions			
reception	1	14	7%

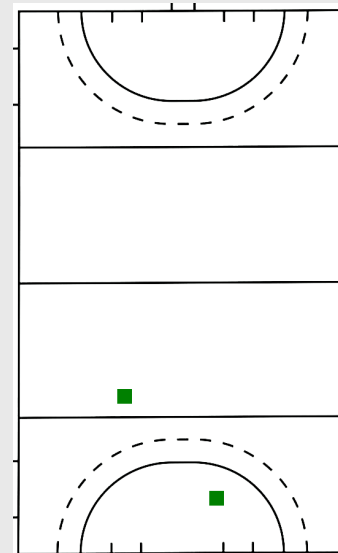
Legend

Circle	Direct ball loss actions
Triangle	Indirect ball loss actions
Square	Effective actions

	Grade						Ball loss			Effective		
Action	1	2	3	4	5	Total	% Direct Ball Loss	% Indirect Ball Loss	% neutral	% Indirect effective	% Direct effective	% Successful
In possession												
attacking action	0	1	2	0	0	3	33%	0%	67%	0%	0%	67%
dribble	0	0	3	0	0	3	0%	0%	100%	0%	0%	100%
free hit	0	0	2	0	0	2	0%	0%	100%	0%	0%	100%
free hit self pass	0	0	2	0	0	2	0%	0%	100%	0%	0%	100%
pass	0	1	15	0	0	16	6%	0%	94%	0%	0%	94%
reception	0	0	14	0	0	14	0%	7%	93%	0%	0%	93%
Total in pos.	0	2	38	0	0	40	5%	2%	92%	0%	0%	92%

	Grade						Ineffective actions			Ball Gain		
Action	1	2	3	4	5	Total	% Direct Ineffective	% Indirect Ineffective	% neutral	% Indirect possession	% Direct ball gain	% Successful
Not in possession												
interception	0	0	1	2	0	3	0%	0%	33%	0%	67%	100%
Total not in pos.	0	0	1	2	0	3	0%	0%	33%	0%	67%	100%

Not in Possession



Action	Sub type amount	Total	% Sub type
Direct ball gain actions			
interception	2	3	67%

Legend

Circle	Ineffective actions
Triangle	Indirect ball gain actions
Square	Direct ball gain actions



Player report

Delaware [3 - 2] North Carolina

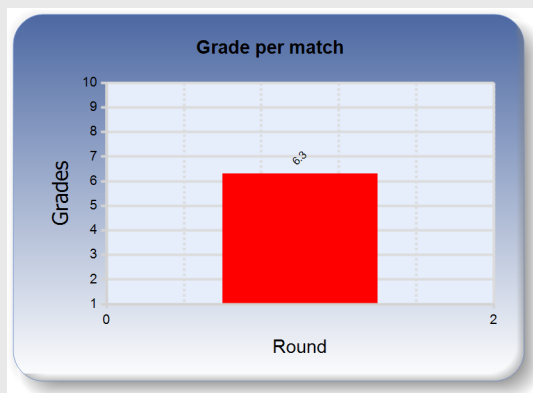
Round 1

Sunday, November 20, 2016 8:00 PM

ORTC/TSS

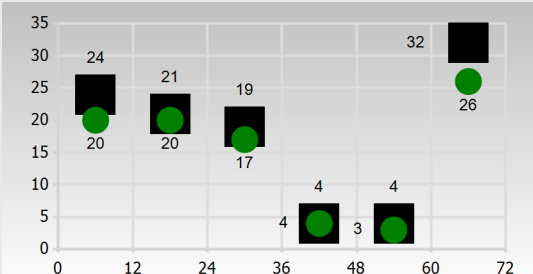
North Carolina

10. Eef Andriessen



Goal attempts / Goals	0 / 0
Fouls Committed / Suffered	5 / 8
Actions / Successful (%)	104 / 90 (87%)
Passes / Successful (%)	30 / 24 (80%)
Attacking Actions / Successful (%)	14 / 11 (79%)
Defending Actions: Lost/Play stopped/Won	0 / 5 / 1

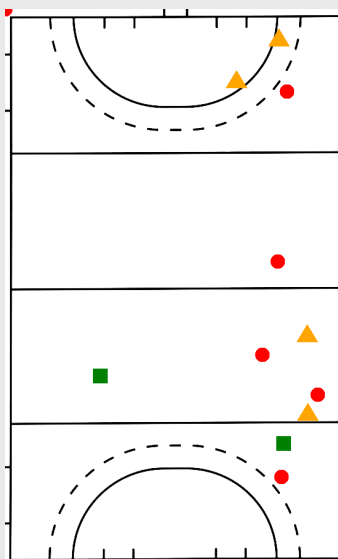
Actions per quarter



Total actions

Successful actions

In Possession



Action	Sub type amount	Total	% Sub type
Direct ball loss actions			
pass	6	30	20%
Indirect ball loss actions			
attacking action	3	14	21%
reception	1	24	4%
Effective actions			
attacking action	2	14	14%

Legend

Circle

Direct ball loss actions

Triangle

Indirect ball loss actions

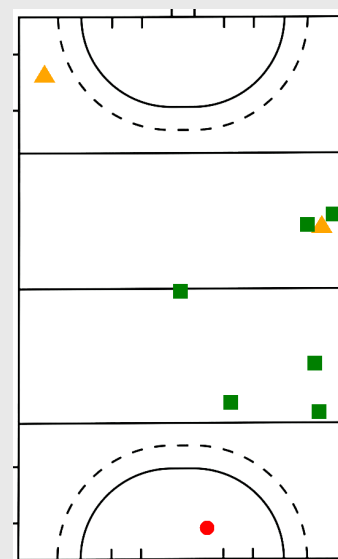
Square

Effective actions

	Grade						Ball loss			Effective		
Action	1	2	3	4	5	Total	% Direct Ball Loss	% Indirect Ball Loss	% neutral	% Indirect effective	% Direct effective	% Successful
In possession												
attacking action	0	0	12	2	0	14	0%	21%	29%	36%	14%	79%
dribble	0	0	8	0	0	8	0%	0%	100%	0%	0%	100%
free hit	0	0	9	0	0	9	0%	0%	100%	0%	0%	100%
free hit self pass	0	0	5	0	0	5	0%	0%	100%	0%	0%	100%
pass	0	6	24	0	0	30	20%	0%	77%	3%	0%	80%
reception	0	0	24	0	0	24	0%	4%	96%	0%	0%	96%
Total in pos.	0	6	82	2	0	90	7%	4%	80%	7%	2%	89%

	Grade						Ineffective actions			Ball Gain		
Action	1	2	3	4	5	Total	% Direct Ineffective	% Indirect Ineffective	% neutral	% Indirect possession	% Direct ball gain	% Successful
Not in possession												
defense	0	0	5	1	0	6	0%	33%	17%	33%	17%	67%
interception	0	1	1	5	0	7	14%	14%	0%	0%	71%	71%
Total not in pos.	0	1	6	6	0	13	8%	23%	8%	15%	46%	69%

Not in Possession



Action	Sub type amount	Total	% Sub type
Ineffective actions			
interception	1	7	14%
Indirect ball gain actions			
defense	2	6	33%
Direct ball gain actions			
defense	1	6	17%
interception	5	7	71%

Legend

Circle

Ineffective actions

Triangle

Indirect ball gain actions

Square

Direct ball gain actions



Player report

Delaware [3 - 2] North Carolina

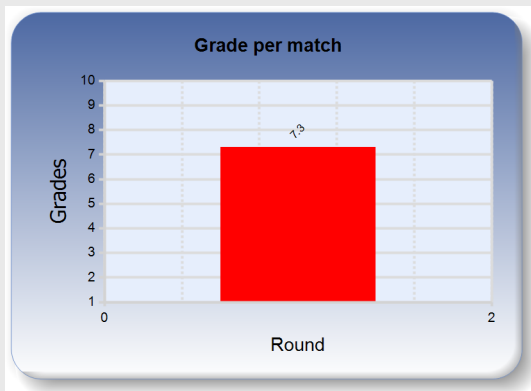
Round 1

Sunday, November 20, 2016 8:00 PM

ORTec/TSS

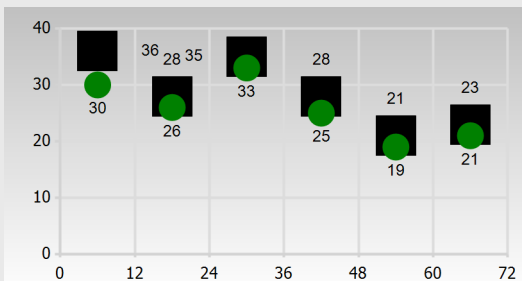
North Carolina

13. Ashley Hofmann



Goal attempts / Goals	0 / 0
Fouls Committed / Suffered	5 / 6
Actions / Successful (%)	171 / 154 (90%)
Passes / Successful (%)	59 / 54 (92%)
Attacking Actions / Successful (%)	7 / 4 (57%)
Defending Actions: Lost/Play stopped/Won	0 / 14 / 2

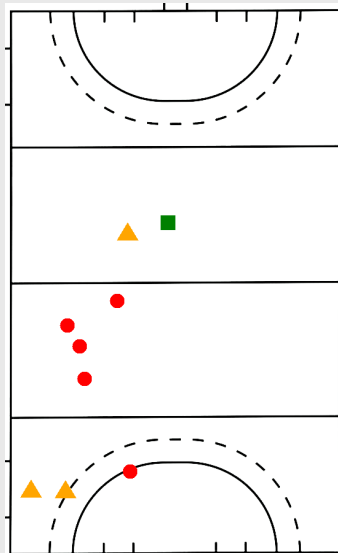
Actions per quarter



Total actions

Successful actions

In Possession



Action	Sub type amount	Total	% Sub type
Direct ball loss actions			
attacking action	1	7	14%
pass	4	59	7%
Indirect ball loss actions			
attacking action	2	7	29%
pass	1	59	2%
Effective actions			
reception	1	37	3%

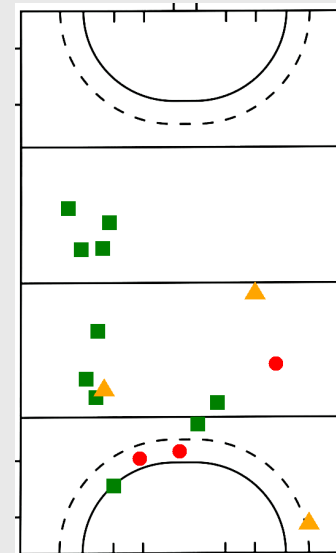
Legend

Circle	Direct ball loss actions
Triangle	Indirect ball loss actions
Square	Effective actions

	Grade						Ball loss			Effective		
Action	1	2	3	4	5	Total	% Direct Ball Loss	% Indirect Ball Loss	% neutral	% Indirect effective	% Direct effective	% Successful
In possession												
attacking action	0	1	6	0	0	7	14%	29%	29%	29%	0%	57%
dribble	0	0	17	0	0	17	0%	0%	100%	0%	0%	100%
free hit	0	0	5	0	0	5	0%	0%	100%	0%	0%	100%
free hit self pass	0	0	12	0	0	12	0%	0%	100%	0%	0%	100%
pass	0	4	55	0	0	59	7%	2%	92%	0%	0%	92%
penalty corner pass	0	0	1	0	0	1	0%	0%	100%	0%	0%	100%
penalty corner stop	0	0	3	0	0	3	0%	0%	100%	0%	0%	100%
reception	0	0	36	1	0	37	0%	0%	97%	0%	3%	100%
Total in pos.	0	5	135	1	0	141	4%	2%	92%	1%	1%	94%

	Grade						Ineffective actions			Ball Gain		
Action	1	2	3	4	5	Total	% Direct Ineffective	% Indirect Ineffective	% neutral	% Indirect possession	% Direct ball gain	% Successful
Not in possession												
defense	0	0	14	2	0	16	0%	31%	38%	19%	12%	69%
interception	0	3	3	8	0	14	21%	7%	14%	0%	57%	71%
Total not in pos.	0	3	17	10	0	30	10%	20%	27%	10%	33%	70%

Not in Possession



Action	Sub type amount	Total	% Sub type
Ineffective actions			
interception	3	14	21%
Indirect ball gain actions			
defense	3	16	19%
Direct ball gain actions			
defense	2	16	12%
interception	8	14	57%

Legend

Circle	Ineffective actions
Triangle	Indirect ball gain actions
Square	Direct ball gain actions



Player report

Delaware [3 - 2] North Carolina

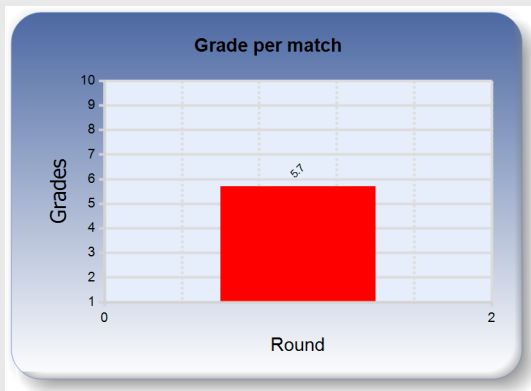
Round 1

Sunday, November 20, 2016 8:00 PM

ORTeC/TSS

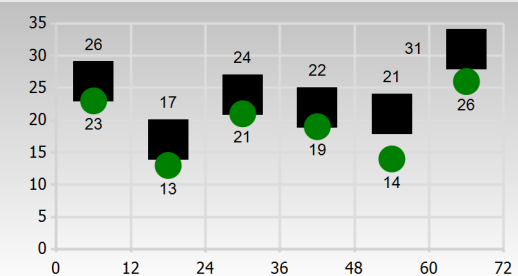
North Carolina

15. Malin Evert



Goal attempts / Goals	6 / 0
Fouls Committed / Suffered	8 / 9
Actions / Successful (%)	141 / 116 (82%)
Passes / Successful (%)	28 / 22 (79%)
Attacking Actions / Successful (%)	18 / 9 (50%)
Defending Actions: Lost/Play stopped/Won	1 / 13 / 3

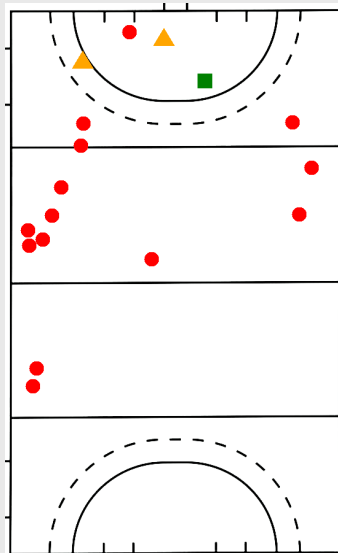
Actions per quarter



Total actions

Successful actions

In Possession



Action	Sub type amount	Total	% Sub type
Direct ball loss actions			
attacking action	8	18	44%
pass	6	28	21%
Indirect ball loss actions			
attacking action	1	18	6%
reception	1	30	3%
Effective actions			
pass	1	28	4%

Legend

Circle

Direct ball loss actions

Triangle

Indirect ball loss actions

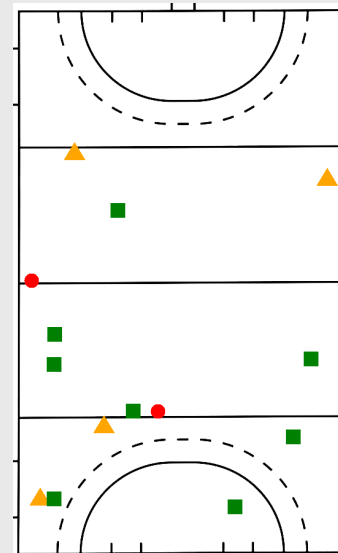
Square

Effective actions

	Grade						Ball loss			Effective		
Action	1	2	3	4	5	Total	% Direct Ball Loss	% Indirect Ball Loss	% neutral	% Indirect effective	% Direct effective	% Successful
In possession												
attacking action	0	8	10	0	0	18	44%	6%	28%	22%	0%	50%
dribble	0	0	24	0	0	24	0%	0%	100%	0%	0%	100%
free hit	0	0	4	0	0	4	0%	0%	100%	0%	0%	100%
free hit self pass	0	0	5	0	0	5	0%	0%	100%	0%	0%	100%
pass	0	6	21	0	1	28	21%	0%	75%	0%	4%	79%
penalty corner pass	0	0	1	0	0	1	0%	0%	100%	0%	0%	100%
penalty corner shot-push	0	0	6	0	0	6	0%	0%	100%	0%	0%	100%
reception	0	0	30	0	0	30	0%	3%	97%	0%	0%	97%
Total in pos.	0	14	101	0	1	116	12%	2%	82%	3%	1%	86%

	Grade						Ineffective actions			Ball Gain		
Action	1	2	3	4	5	Total	% Direct Ineffective	% Indirect Ineffective	% neutral	% Indirect possession	% Direct ball gain	% Successful
Not in possession												
defense	0	1	13	3	0	17	6%	35%	18%	24%	18%	59%
interception	0	1	1	5	0	7	14%	14%	0%	0%	71%	71%
save on goal attempt	0	0	1	0	0	1	0%	0%	100%	0%	0%	100%
Total not in pos.	0	2	15	8	0	25	8%	28%	16%	16%	32%	64%

Not in Possession



Action	Sub type amount	Total	% Sub type
Ineffective actions			
defense	1	17	6%
interception	1	7	14%
Indirect ball gain actions			
defense	4	17	24%
Direct ball gain actions			
defense	3	17	18%
interception	5	7	71%

Legend

Circle

Ineffective actions

Triangle

Indirect ball gain actions

Square

Direct ball gain actions



Player report

Delaware [3 - 2] North Carolina

Round 1

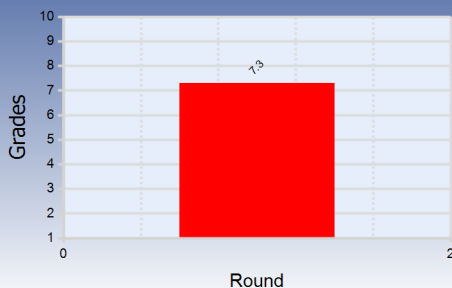
Sunday, November 20, 2016 8:00 PM

ORTC/TSS

North Carolina

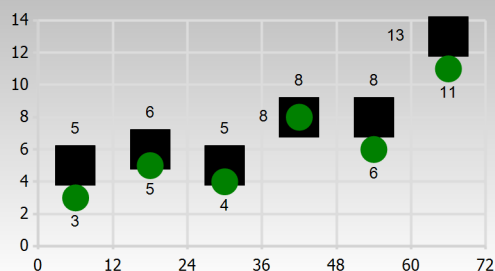
2. Lauren Moyer

Grade per match



Goal attempts / Goals	2 / 1
Fouls Committed / Suffered	7 / 5
Actions / Successful (%)	45 / 37 (82%)
Passes / Successful (%)	4 / 3 (75%)
Attacking Actions / Successful (%)	7 / 5 (71%)
Defending Actions: Lost/Play stopped/Won	0 / 6 / 2

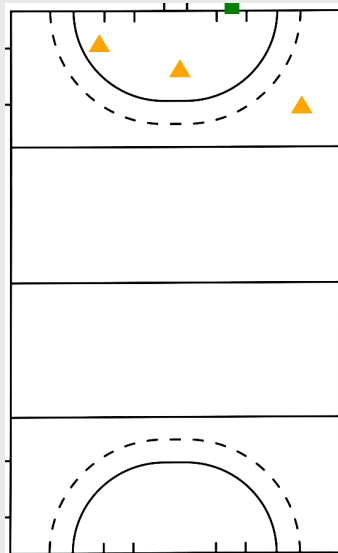
Actions per quarter



Total actions

Successful actions

In Possession

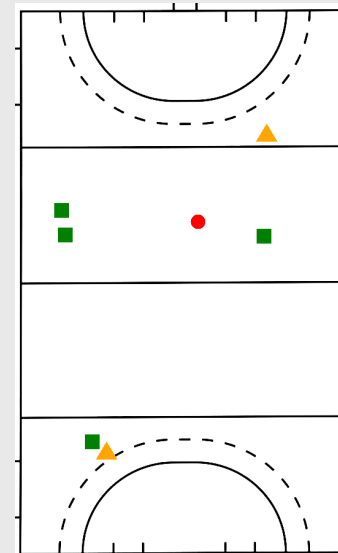


Action	Sub type amount	Total	% Sub type
Indirect ball loss actions			
attacking action	2	7	29%
pass	1	4	25%
Effective actions			
goal attempt	1	2	50%

Legend

Circle	Direct ball loss actions
Triangle	Indirect ball loss actions
Square	Effective actions

Not in Possession



Action	Sub type amount	Total	% Sub type
Ineffective actions			
interception	1	3	33%
Indirect ball gain actions			
defense	2	8	25%
Direct ball gain actions			
defense	2	8	25%
interception	2	3	67%

Legend

Circle	Ineffective actions
Triangle	Indirect ball gain actions
Square	Direct ball gain actions

	Grade						Ball loss			Effective		
Action	1	2	3	4	5	Total	% Direct Ball Loss	% Indirect Ball Loss	% neutral	% Indirect effective	% Direct effective	% Successful
In possession												
attacking action	0	0	7	0	0	7	0%	29%	29%	43%	0%	71%
dribble	0	0	6	0	0	6	0%	0%	100%	0%	0%	100%
free hit	0	0	2	0	0	2	0%	0%	100%	0%	0%	100%
free hit self pass	0	0	1	0	0	1	0%	0%	100%	0%	0%	100%
goal attempt	0	0	1	0	1	2	0%	0%	50%	0%	50%	100%
pass	0	0	4	0	0	4	0%	25%	50%	25%	0%	75%
penalty corner pass	0	0	2	0	0	2	0%	0%	100%	0%	0%	100%
reception	0	0	9	0	0	9	0%	0%	100%	0%	0%	100%
Total in pos.	0	0	32	0	1	33	0%	9%	76%	12%	3%	91%

	Grade						Ineffective actions			Ball Gain		
Action	1	2	3	4	5	Total	% Direct Ineffective	% Indirect Ineffective	% neutral	% Indirect possession	% Direct ball gain	% Successful
Not in possession												
defense	0	0	6	2	0	8	0%	50%	0%	25%	25%	50%
interception	0	1	0	2	0	3	33%	0%	0%	0%	67%	67%
Total not in pos.	0	1	6	4	0	11	9%	36%	0%	18%	36%	55%



Player report

Delaware [3 - 2] North Carolina

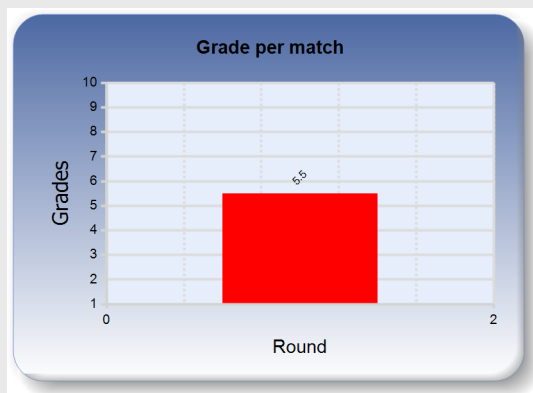
Round 1

Sunday, November 20, 2016 8:00 PM

ORTec/TSS

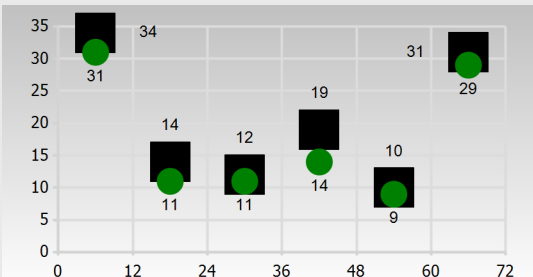
North Carolina

14. Emma Bozek



Goal attempts / Goals	1 / 0
Fouls Committed / Suffered	4 / 5
Actions / Successful (%)	120 / 105 (88%)
Passes / Successful (%)	23 / 21 (91%)
Attacking Actions / Successful (%)	21 / 14 (67%)
Defending Actions: Lost/Play stopped/Won	0 / 7 / 3

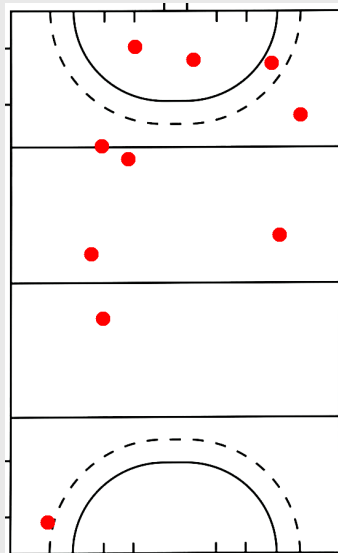
Actions per quarter



Total actions

Successful actions

In Possession



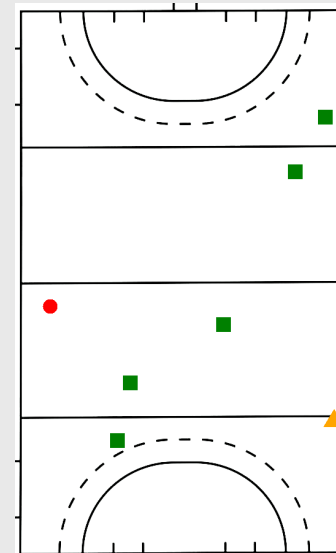
Action	Sub type amount	Total	% Sub type
Direct ball loss actions			
attacking action	7	21	33%
pass	2	23	9%
reception	1	32	3%

Legend	
Circle	Direct ball loss actions
Triangle	Indirect ball loss actions
Square	Effective actions

	Grade						Ball loss			Effective		
Action	1	2	3	4	5	Total	% Direct Ball Loss	% Indirect Ball Loss	% neutral	% Indirect effective	% Direct effective	% Successful
In possession												
attacking action	0	7	14	0	0	21	33%	0%	43%	24%	0%	67%
dribble	0	0	21	0	0	21	0%	0%	100%	0%	0%	100%
free hit self pass	0	0	8	0	0	8	0%	0%	100%	0%	0%	100%
goal attempt	0	0	1	0	0	1	0%	0%	100%	0%	0%	100%
pass	0	2	21	0	0	23	9%	0%	87%	4%	0%	91%
reception	0	1	31	0	0	32	3%	0%	97%	0%	0%	97%
Total in pos.	0	10	96	0	0	106	9%	0%	85%	6%	0%	91%

	Grade						Ineffective actions			Ball Gain		
Action	1	2	3	4	5	Total	% Direct Ineffective	% Indirect Ineffective	% neutral	% Indirect possession	% Direct ball gain	% Successful
Not in possession												
defense	0	0	7	3	0	10	0%	40%	20%	10%	30%	60%
interception	0	1	0	2	0	3	33%	0%	0%	0%	67%	67%
Total not in pos.	0	1	7	5	0	13	8%	31%	15%	8%	38%	62%

Not in Possession



Action	Sub type amount	Total	% Sub type
Ineffective actions			
interception	1	3	33%
Indirect ball gain actions			
defense	1	10	10%
Direct ball gain actions			
defense	3	10	30%
interception	2	3	67%

Legend	
Circle	Ineffective actions
Triangle	Indirect ball gain actions
Square	Direct ball gain actions



Player report

Delaware [3 - 2] North Carolina

Round 1

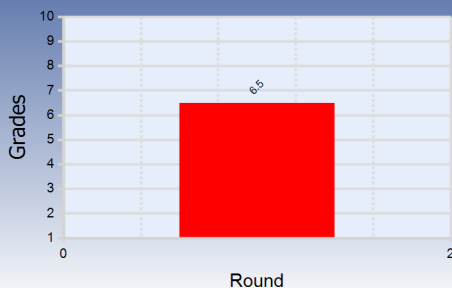
Sunday, November 20, 2016 8:00 PM

ORTC/TSS

North Carolina

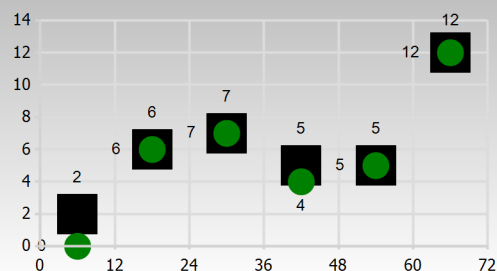
16. Julia Young

Grade per match



Goal attempts / Goals	1 / 0
Fouls Committed / Suffered	2 / 1
Actions / Successful (%)	37 / 34 (92%)
Passes / Successful (%)	11 / 11 (100%)
Attacking Actions / Successful (%)	0 / 0 (0%)
Defending Actions: Lost/Play stopped/Won	0 / 3 / 1

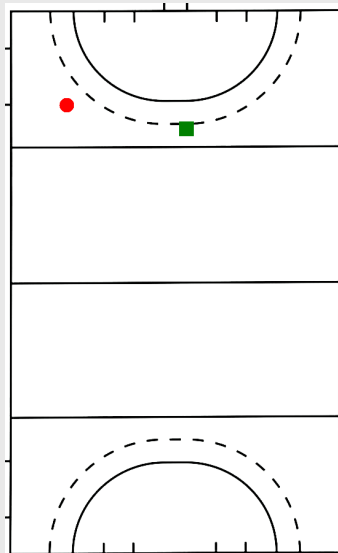
Actions per quarter



Total actions

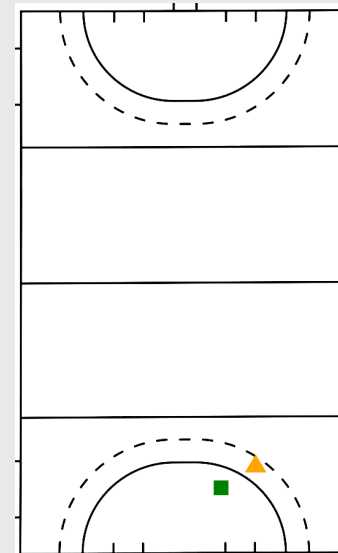
Successful actions

In Possession



Action	Sub type amount	Total	% Sub type
Direct ball loss actions			
reception	1	9	11%
Effective actions			
penalty corner stop	1	4	25%
Legend			
Circle	Direct ball loss actions		
Triangle	Indirect ball loss actions		
Square	Effective actions		

Not in Possession



Action	Sub type amount	Total	% Sub type
Indirect ball gain actions			
defense	1	4	25%
Direct ball gain actions			
defense	1	4	25%
Legend			
Circle	Ineffective actions		
Triangle	Indirect ball gain actions		
Square	Direct ball gain actions		

	Grade						Ball loss			Effective		
Action	1	2	3	4	5	Total	% Direct Ball Loss	% Indirect Ball Loss	% neutral	% Indirect effective	% Direct effective	% Successful
In possession												
dribble	0	0	4	0	0	4	0%	0%	100%	0%	0%	100%
free hit	0	0	1	0	0	1	0%	0%	100%	0%	0%	100%
free hit self pass	0	0	2	0	0	2	0%	0%	100%	0%	0%	100%
goal attempt	0	0	1	0	0	1	0%	0%	100%	0%	0%	100%
pass	0	0	11	0	0	11	0%	0%	100%	0%	0%	100%
penalty corner stop	0	0	3	1	0	4	0%	0%	75%	0%	25%	100%
reception	0	1	8	0	0	9	11%	0%	89%	0%	0%	89%
Total in pos.	0	1	30	1	0	32	3%	0%	94%	0%	3%	97%

	Grade						Ineffective actions			Ball Gain		
Action	1	2	3	4	5	Total	% Direct Ineffective	% Indirect Ineffective	% neutral	% Indirect possession	% Direct ball gain	% Successful
Not in possession												
defense	0	0	3	1	0	4	0%	50%	0%	25%	25%	50%
interception	0	0	1	0	0	1	0%	0%	100%	0%	0%	100%
Total not in pos.	0	0	4	1	0	5	0%	40%	20%	20%	20%	60%



Player report

Delaware [3 - 2] North Carolina

Round 1

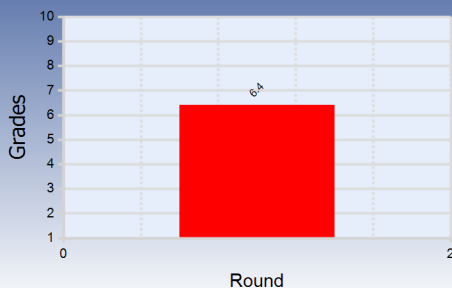
Sunday, November 20, 2016 8:00 PM

ORTC/TSS

North Carolina

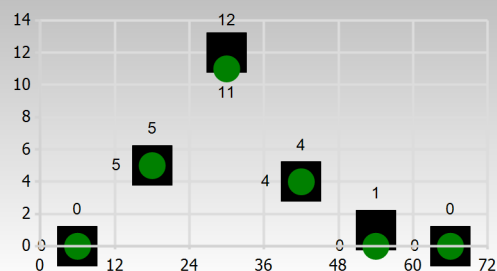
8. Catherine Hayden

Grade per match



Goal attempts / Goals	0 / 0
Fouls Committed / Suffered	2 / 2
Actions / Successful (%)	22 / 20 (91%)
Passes / Successful (%)	4 / 4 (100%)
Attacking Actions / Successful (%)	2 / 2 (100%)
Defending Actions: Lost/Play stopped/Won	0 / 3 / 0

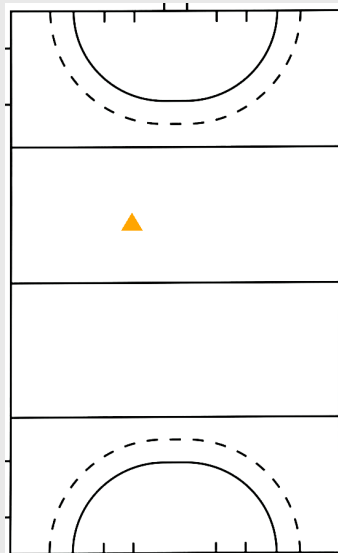
Actions per quarter



Total actions

Successful actions

In Possession



Action	Sub type amount	Total	% Sub type
Indirect ball loss actions			
reception	1	6	17%

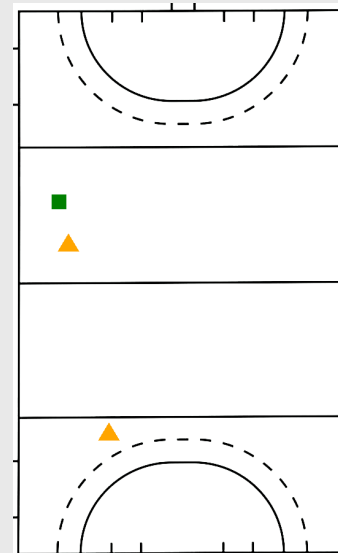
Legend

Circle	Direct ball loss actions
Triangle	Indirect ball loss actions
Square	Effective actions

	Grade						Ball loss			Effective		
Action	1	2	3	4	5	Total	% Direct Ball Loss	% Indirect Ball Loss	% neutral	% Indirect effective	% Direct effective	% Successful
In possession												
attacking action	0	0	2	0	0	2	0%	0%	100%	0%	0%	100%
dribble	0	0	5	0	0	5	0%	0%	100%	0%	0%	100%
free hit self pass	0	0	1	0	0	1	0%	0%	100%	0%	0%	100%
pass	0	0	4	0	0	4	0%	0%	100%	0%	0%	100%
reception	0	0	6	0	0	6	0%	17%	83%	0%	0%	83%
Total in pos.	0	0	18	0	0	18	0%	6%	94%	0%	0%	94%

	Grade						Ineffective actions			Ball Gain		
Action	1	2	3	4	5	Total	% Direct Ineffective	% Indirect Ineffective	% neutral	% Indirect possession	% Direct ball gain	% Successful
Not in possession												
defense	0	0	3	0	0	3	0%	33%	0%	67%	0%	67%
interception	0	0	0	1	0	1	0%	0%	0%	0%	100%	100%
Total not in pos.	0	0	3	1	0	4	0%	25%	0%	50%	25%	75%

Not in Possession



Action	Sub type amount	Total	% Sub type
Indirect ball gain actions			
defense	2	3	67%
Direct ball gain actions			
interception	1	1	100%

Legend

Circle	Ineffective actions
Triangle	Indirect ball gain actions
Square	Direct ball gain actions



Player report

Delaware [3 - 2] North Carolina

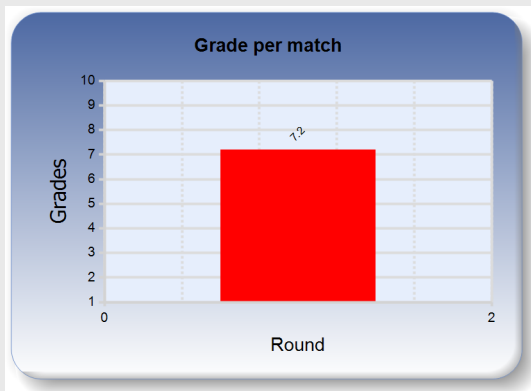
Round 1

Sunday, November 20, 2016 8:00 PM

ORTC/TSS

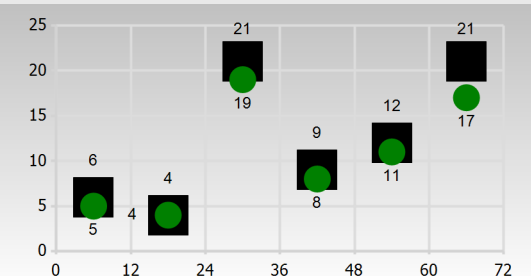
North Carolina

17. Morgan Goetz



Goal attempts / Goals	0 / 0
Fouls Committed / Suffered	0 / 3
Actions / Successful (%)	73 / 64 (88%)
Passes / Successful (%)	26 / 24 (92%)
Attacking Actions / Successful (%)	3 / 2 (67%)
Defending Actions: Lost/Play stopped/Won	0 / 8 / 1

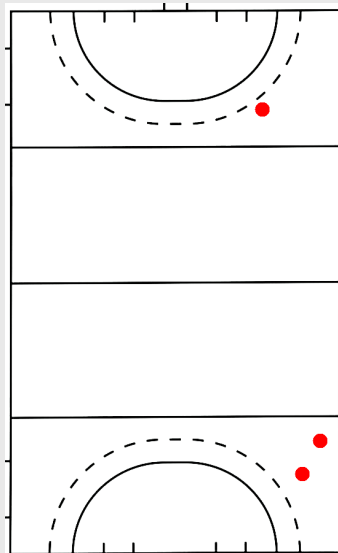
Actions per quarter



Total actions

Successful actions

In Possession



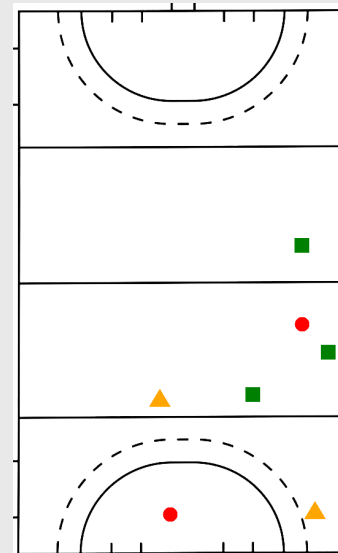
Action	Sub type amount	Total	% Sub type
Direct ball loss actions			
attacking action	1	3	33%
pass	2	26	8%

Legend	
Circle	Direct ball loss actions
Triangle	Indirect ball loss actions
Square	Effective actions

	Grade						Ball loss			Effective		
Action	1	2	3	4	5	Total	% Direct Ball Loss	% Indirect Ball Loss	% neutral	% Indirect effective	% Direct effective	% Successful
In possession												
attacking action	0	1	2	0	0	3	33%	0%	33%	33%	0%	67%
dribble	0	0	4	0	0	4	0%	0%	100%	0%	0%	100%
free hit	0	0	1	0	0	1	0%	0%	100%	0%	0%	100%
free hit self pass	0	0	7	0	0	7	0%	0%	100%	0%	0%	100%
pass	0	2	24	0	0	26	8%	0%	92%	0%	0%	92%
reception	0	0	18	0	0	18	0%	0%	100%	0%	0%	100%
Total in pos.	0	3	56	0	0	59	5%	0%	93%	2%	0%	95%

	Grade						Ineffective actions			Ball Gain		
Action	1	2	3	4	5	Total	% Direct Ineffective	% Indirect Ineffective	% neutral	% Indirect possession	% Direct ball gain	% Successful
Not in possession												
defense	0	0	8	1	0	9	0%	33%	33%	22%	11%	67%
interception	0	2	1	2	0	5	40%	20%	0%	0%	40%	40%
Total not in pos.	0	2	9	3	0	14	14%	29%	21%	14%	21%	57%

Not in Possession



Action	Sub type amount	Total	% Sub type
Ineffective actions			
interception	2	5	40%
Indirect ball gain actions			
defense	2	9	22%
Direct ball gain actions			
defense	1	9	11%
interception	2	5	40%

Legend	
Circle	Ineffective actions
Triangle	Indirect ball gain actions
Square	Direct ball gain actions



Player report

Delaware [3 - 2] North Carolina

Round 1

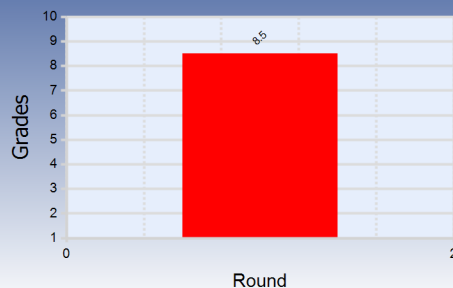
Sunday, November 20, 2016 8:00 PM

ORTC/TSS

North Carolina

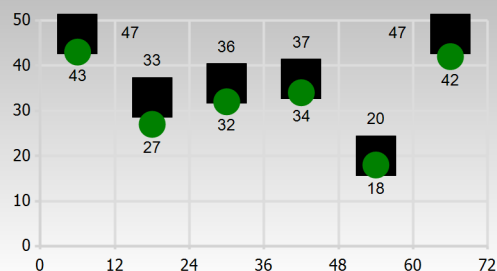
22. Eva van't Hoog

Grade per match



Goal attempts / Goals	2 / 0
Fouls Committed / Suffered	10 / 9
Actions / Successful (%)	220 / 196 (89%)
Passes / Successful (%)	62 / 56 (90%)
Attacking Actions / Successful (%)	21 / 17 (81%)
Defending Actions: Lost/Play stopped/Won	1 / 10 / 3

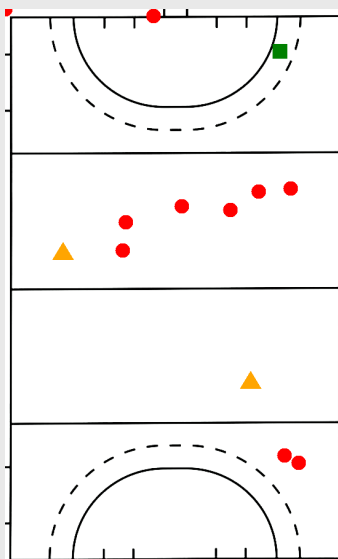
Actions per quarter



Total actions

Successful actions

In Possession



Action	Sub type amount	Total	% Sub type
Direct ball loss actions			
attacking action	3	21	14%
free hit	1	8	12%
pass	6	62	10%
Indirect ball loss actions			
attacking action	1	21	5%
reception	1	53	2%
Effective actions			
attacking action	1	21	5%

Legend

Circle

Direct ball loss actions

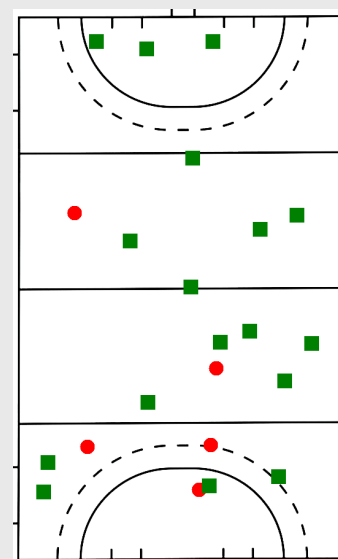
Triangle

Indirect ball loss actions

Square

Effective actions

Not in Possession



Action	Sub type amount	Total	% Sub type
Ineffective actions			
defense	1	14	7%
interception	4	20	20%
Direct ball gain actions			
defense	3	14	21%
interception	13	20	65%
save on penalty stroke	1	1	100%

Legend

Circle

Ineffective actions

Triangle

Indirect ball gain actions

Square

Direct ball gain actions

	Grade						Ball loss			Effective		
Action	1	2	3	4	5	Total	% Direct Ball Loss	% Indirect Ball Loss	% neutral	% Indirect effective	% Direct effective	% Successful
In possession												
attacking action	0	3	17	1	0	21	14%	5%	43%	33%	5%	81%
dribble	0	0	30	0	0	30	0%	0%	100%	0%	0%	100%
free hit	0	1	7	0	0	8	12%	0%	88%	0%	0%	88%
free hit self pass	0	0	9	0	0	9	0%	0%	100%	0%	0%	100%
goal attempt	0	0	2	0	0	2	0%	0%	100%	0%	0%	100%
pass	0	6	56	0	0	62	10%	0%	90%	0%	0%	90%
reception	0	0	53	0	0	53	0%	2%	96%	2%	0%	98%
Total in pos.	0	10	174	1	0	185	5%	1%	89%	4%	1%	94%
	Grade						Ineffective actions			Ball Gain		
Action	1	2	3	4	5	Total	% Direct Ineffective	% Indirect Ineffective	% neutral	% Indirect possession	% Direct ball gain	% Successful
Not in possession												
defense	0	1	10	3	0	14	7%	43%	29%	0%	21%	50%
interception	0	4	3	13	0	20	20%	5%	10%	0%	65%	75%
save on penalty stroke	0	0	0	1	0	1	0%	0%	0%	0%	100%	100%
Total not in pos.	0	5	13	17	0	35	14%	20%	17%	0%	49%	66%



Player report

Delaware [3 - 2] North Carolina

Round 1

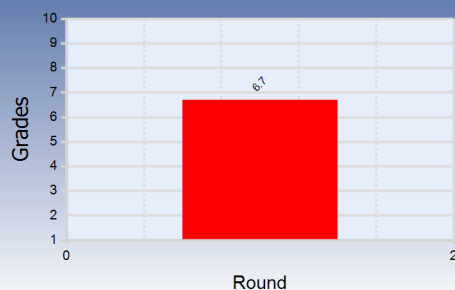
Sunday, November 20, 2016 8:00 PM

ORTC/TSS

North Carolina

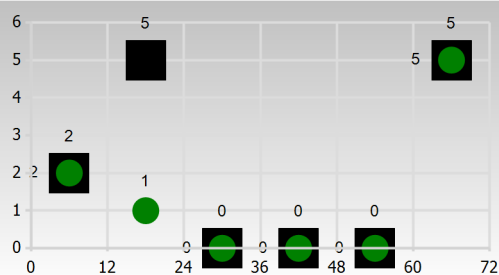
27. Gab Major

Grade per match



Goal attempts / Goals	0 / 0
Fouls Committed / Suffered	1 / 2
Actions / Successful (%)	12 / 8 (67%)
Passes / Successful (%)	2 / 0 (0%)
Attacking Actions / Successful (%)	3 / 3 (100%)
Defending Actions: Lost/Play stopped/Won	0 / 0 / 1

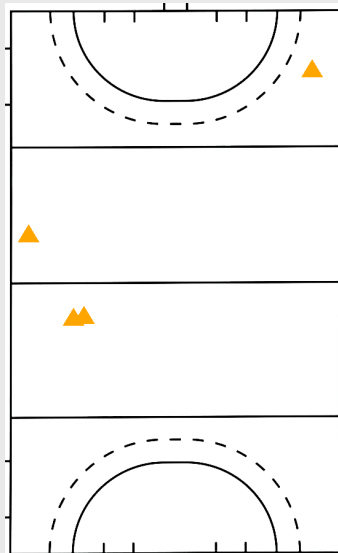
Actions per quarter



Total actions

Successful actions

In Possession



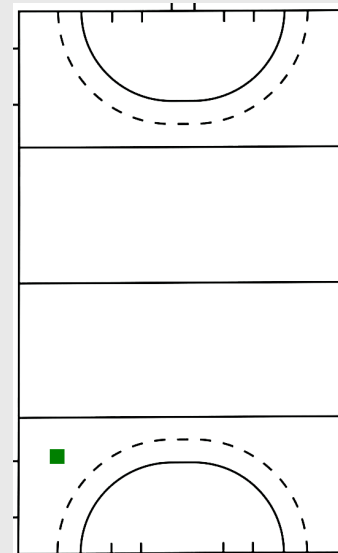
Action	Sub type amount	Total	% Sub type
Indirect ball loss actions			
dribble	1	1	100%
pass	2	2	100%
reception	1	5	20%

Legend	
Circle	Direct ball loss actions
Triangle	Indirect ball loss actions
Square	Effective actions

	Grade						Ball loss			Effective		
Action	1	2	3	4	5	Total	% Direct Ball Loss	% Indirect Ball Loss	% neutral	% Indirect effective	% Direct effective	% Successful
In possession												
attacking action	0	0	3	0	0	3	0%	0%	67%	33%	0%	100%
dribble	0	0	1	0	0	1	0%	100%	0%	0%	0%	0%
pass	0	0	2	0	0	2	0%	100%	0%	0%	0%	0%
reception	0	0	5	0	0	5	0%	20%	80%	0%	0%	80%
Total in pos.	0	0	11	0	0	11	0%	36%	55%	9%	0%	64%

	Grade						Ineffective actions			Ball Gain		
Action	1	2	3	4	5	Total	% Direct Ineffective	% Indirect Ineffective	% neutral	% Indirect possession	% Direct ball gain	% Successful
Not in possession												
defense	0	0	0	1	0	1	0%	0%	0%	0%	100%	100%
Total not in pos.	0	0	0	1	0	1	0%	0%	0%	0%	100%	100%

Not in Possession



Action	Sub type amount	Total	% Sub type
Direct ball gain actions			
defense	1	1	100%

Legend	
Circle	Ineffective actions
Triangle	Indirect ball gain actions
Square	Direct ball gain actions



Player report

Delaware [3 - 2] North Carolina

Round 1

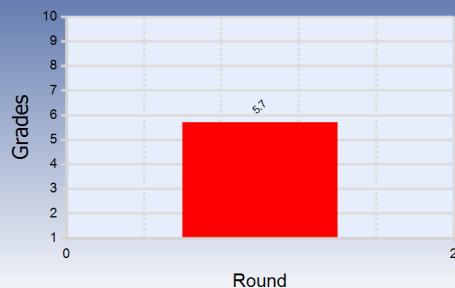
Sunday, November 20, 2016 8:00 PM

ORTC/TSS

North Carolina

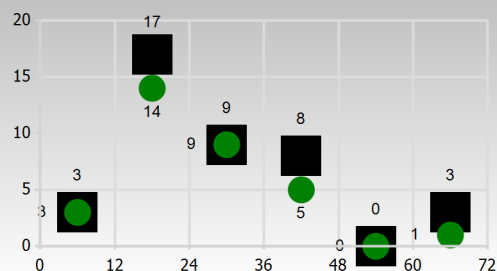
29. Megan DuVernois

Grade per match



Goal attempts / Goals	1 / 1
Fouls Committed / Suffered	1 / 0
Actions / Successful (%)	40 / 32 (80%)
Passes / Successful (%)	9 / 6 (67%)
Attacking Actions / Successful (%)	6 / 4 (67%)
Defending Actions: Lost/Play stopped/Won	0 / 2 / 2

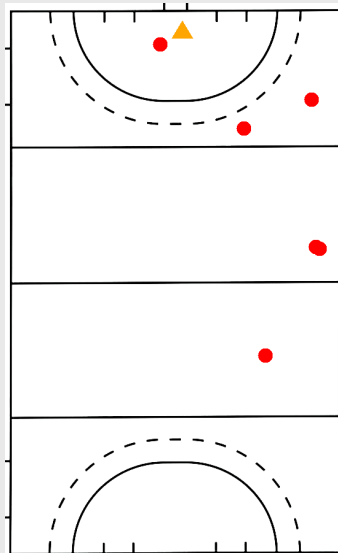
Actions per quarter



Total actions

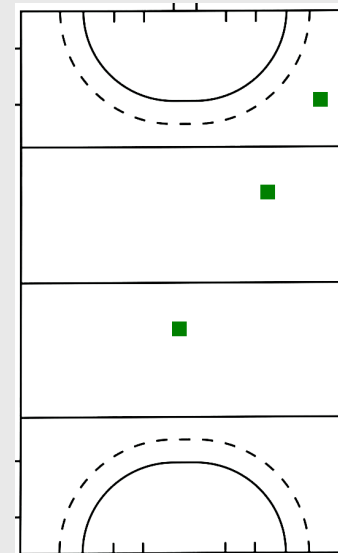
Successful actions

In Possession



Action	Sub type amount	Total	% Sub type
Direct ball loss actions			
attacking action	2	6	33%
pass	3	9	33%
reception	1	10	10%
Indirect ball loss actions			
reception	1	10	10%
Legend			
Circle	Direct ball loss actions		
Triangle	Indirect ball loss actions		
Square	Effective actions		

Not in Possession



Action	Sub type amount	Total	% Sub type
Direct ball gain actions			
defense	2	4	50%
interception	1	1	100%
Legend			
Circle	Ineffective actions		
Triangle	Indirect ball gain actions		
Square	Direct ball gain actions		

	Grade						Ball loss			Effective		
Action	1	2	3	4	5	Total	% Direct Ball Loss	% Indirect Ball Loss	% neutral	% Indirect effective	% Direct effective	% Successful
In possession												
attacking action	0	2	4	0	0	6	33%	0%	33%	33%	0%	67%
dribble	0	0	5	0	0	5	0%	0%	100%	0%	0%	100%
free hit	0	0	2	0	0	2	0%	0%	100%	0%	0%	100%
free hit self pass	0	0	2	0	0	2	0%	0%	100%	0%	0%	100%
goal attempt	0	0	1	0	0	1	0%	0%	100%	0%	0%	100%
pass	0	3	6	0	0	9	33%	0%	67%	0%	0%	67%
reception	0	1	9	0	0	10	10%	10%	80%	0%	0%	80%
Total in pos.	0	6	29	0	0	35	17%	3%	74%	6%	0%	80%

	Grade						Ineffective actions			Ball Gain		
Action	1	2	3	4	5	Total	% Direct Ineffective	% Indirect Ineffective	% neutral	% Indirect possession	% Direct ball gain	% Successful
Not in possession												
defense	0	0	2	2	0	4	0%	25%	25%	0%	50%	75%
interception	0	0	0	1	0	1	0%	0%	0%	0%	100%	100%
Total not in pos.	0	0	2	3	0	5	0%	20%	20%	0%	60%	80%



Player report

Delaware [3 - 2] North Carolina

Round 1

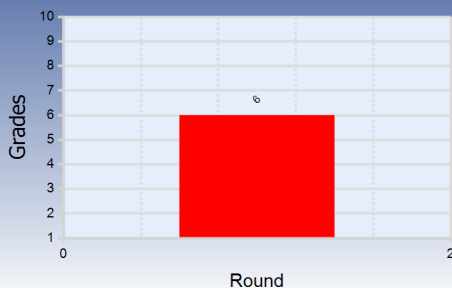
Sunday, November 20, 2016 8:00 PM

ORTC/TSS

North Carolina

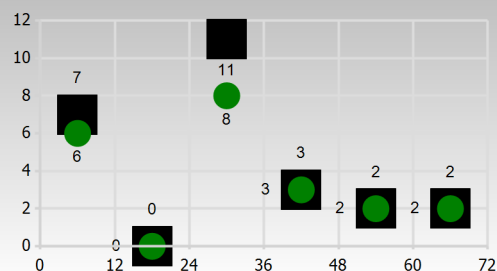
33. Marissa Creatore

Grade per match



Goal attempts / Goals	2 / 0
Fouls Committed / Suffered	2 / 2
Actions / Successful (%)	25 / 21 (84%)
Passes / Successful (%)	4 / 4 (100%)
Attacking Actions / Successful (%)	4 / 2 (50%)
Defending Actions: Lost/Play stopped/Won	0 / 2 / 0

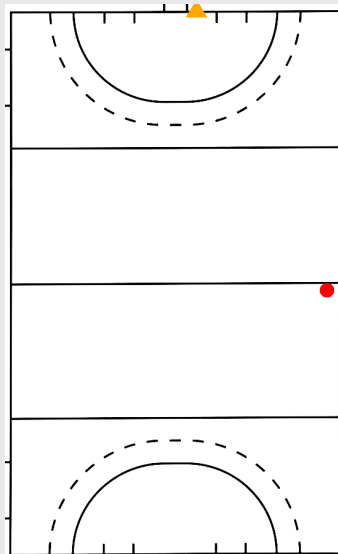
Actions per quarter



Total actions

Successful actions

In Possession



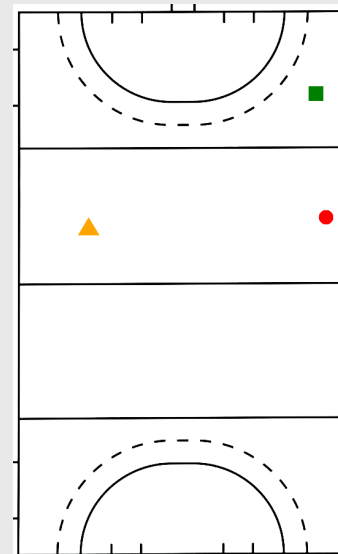
Action	Sub type amount	Total	% Sub type
Direct ball loss actions			
attacking action	1	4	25%
Indirect ball loss actions			
attacking action	1	4	25%

Legend	
Circle	Direct ball loss actions
Triangle	Indirect ball loss actions
Square	Effective actions

	Grade						Ball loss			Effective		
Action	1	2	3	4	5	Total	% Direct Ball Loss	% Indirect Ball Loss	% neutral	% Indirect effective	% Direct effective	% Successful
In possession												
attacking action	0	1	3	0	0	4	25%	25%	25%	25%	0%	50%
dribble	0	0	2	0	0	2	0%	0%	100%	0%	0%	100%
goal attempt	0	0	2	0	0	2	0%	0%	100%	0%	0%	100%
pass	0	0	4	0	0	4	0%	0%	100%	0%	0%	100%
reception	0	0	8	0	0	8	0%	0%	100%	0%	0%	100%
Total in pos.	0	1	19	0	0	20	5%	5%	85%	5%	0%	90%

	Grade						Ineffective actions			Ball Gain		
Action	1	2	3	4	5	Total	% Direct Ineffective	% Indirect Ineffective	% neutral	% Indirect possession	% Direct ball gain	% Successful
Not in possession												
defense	0	0	2	0	0	2	0%	50%	0%	50%	0%	50%
interception	0	1	1	1	0	3	33%	0%	33%	0%	33%	67%
Total not in pos.	0	1	3	1	0	5	20%	20%	20%	20%	20%	60%

Not in Possession



Action	Sub type amount	Total	% Sub type
Ineffective actions			
interception	1	3	33%
Indirect ball gain actions			
defense	1	2	50%
Direct ball gain actions			
interception	1	3	33%

Legend	
Circle	Ineffective actions
Triangle	Indirect ball gain actions
Square	Direct ball gain actions



Definitions	
Grade	Every ball action in a match is evaluated by an analyst. The analyst gives a grade for each action that indicates the effectiveness or quality of that action. Grades between 1 to 5 are given.
Goal attempt	All actions that lead to an attempt to score a goal. This includes shots during play, penalty corner shot push and penalty strokes.
Foul committed by	An action is a foul committed by a player or team, which is a 'foul committed by in play', 'foul committed by side line' or results in a 'penalty corner against'.
Foul committed against	An action is a foul committed against a player or team, which is a 'foul committed against in play', 'foul committed against side line' or results in a 'penalty corner received'.
Successful action	Successful actions are all actions with grade 3, 4 or 5. Exceptions are actions with grade 3 that have a foul committed by the player or team.
Defensive action lost	A defensive action with grade ≤ 2 .
Defensive action play stopped	A defensive action with grade 3.
Defensive action won	A defensive action with grade ≥ 4 .
In Possession action	A player or team is in possession when the player or team performs a Pass, Attacking action, Reception, Free hit, Free hit self pass, Dribble, shot, penalty corner stop, penalty corner push out or penalty corner shot push.
Not In Possession action	A player or team is Not In Possession when the player or team performs an Interception, Defensive action, Save on goal attempt, Save on penalty corner or a Save on penalty stroke.
Direct ball loss	Direct ball loss is defined as an action In Possession with grade 1 or grade 2 of a player or team.
Indirect ball loss	Indirect ball loss is an action of a player that is In Possession with grade 3 that has a foul committed by the player.
Neutral action	A neutral action is an action with grade 3 that is not an indirect ball gain or indirect ball loss.
Effective action	An action In Possession with grade 4 or grade 5.
Ineffective action	An action Not In Possession with grade 1 or grade 2.
Indirect ball gain	Indirect ball gain is an action Not In Possession with grade 3 that is a foul committed against the player or team, but is not a penalty corner received.
Direct ball gain	A direct ball gain action is defined as a Not In Possession action with grade 4 or grade 5 or (grade 3 and it is a penalty corner received) of a player or team.