

TUSCULUM COLLEGE



Fact Book 2017 - 2018

Intentionally Left Blank

TUSCULUM COLLEGE

ESTABLISHED 1794

Contents

Admissions	4
First Time in College Applications.....	4
Transfer Student Applications	4
New Student Applications – First Time and Transfer	4
New Undergraduate GPS Student Enrollment by Fall Term.....	5
Enrollment	6
Enrollment by Term.....	6
Student to Faculty Ratio by Fall Term.....	7
10 Year Enrollment Summary	8
Traditional Enrollment by Major	9
Traditional Enrollment by Licensure Track.....	10
Fall 2017 Traditional Enrollment by Major and Class Code	11
GPS Undergraduate Enrollment by Major.....	12
Graduate Enrollment by Major	13
GPS Enrollment by Site.....	13
Demographics	14
Fall Enrollment by Gender and Ethnicity – All Students	14
Fall Enrollment by Gender and Ethnicity – Traditional Students.....	14
Fall Enrollment by Gender and Ethnicity – GPS Students	15
Fall Enrollment by Residency Status – All Students	16
Fall Enrollment by Residency Status – Traditional Students	16
Fall Enrollment by Residency Status – GPS Students.....	16
Fall Undergraduate Enrollment by Student Status – All Students.....	17
Fall Undergraduate Enrollment by Student Status – Traditional Students	17
Fall Undergraduate Enrollment by Student Status – GPS Students.....	17
Traditional Enrollment by Tennessee County	18
GPS Enrollment by Tennessee County.....	19
Overall Enrollment by State.....	20

International Student Enrollment by Country	21
Traditional College Class Size – Fall Term	22
Graduate and Professional Student Class Size – Fall Term.....	22
Fall 2016 Class Size by Category	22
Online Course Enrollment by Fall Term.....	23
Trends	24
Average Incoming ACT and SAT Score – 10 Year Trend	24
Fall Freshmen Returning for Sophomore Year*	24
Fall to Fall Freshman Retention by Ethnicity	25
Fall to Fall Freshman Retention by Pell Status.....	25
Fall to Fall Freshman Retention by Athletic Status	25
Total Degrees by Year	25
Traditional Graduates by Major and Year	26
GPS Graduates by Major and Year.....	26
Graduation Rates by Ethnicity	27
Graduation Rates by Pell Status.....	27
Graduation Rates Athletic Status	29
Tuition and Financial Aid.....	31
Students Eligible and Receiving Pell – Fall 2016.....	32
Students Loan Information – Fall 2016	32

Admissions

Residential/Traditional Students

First Time in College Applications

Term	Applied	Accepted	Enrolled	Acceptance Rate	Enrollment Rate
Fall 2017	2,239	1,658	327	74.1%	19.7%
Fall 2016	2,238	1,665	312	74.4%	18.7%
Fall 2015	2,091	1,442	269	69.0%	18.7%
Fall 2014	2,537	1,825	284	71.9%	15.6%
Fall 2013	2,586	1,604	296	62.0%	18.5%

Transfer Student Applications

Term	Applied	Accepted	Enrolled	Acceptance Rate	Enrollment Rate
Fall 2017	275	144	78	52.4%	54.2%
Fall 2016	285	146	56	51.2%	38.4%
Fall 2015	160	98	49	61.3%	50.0%
Fall 2014	273	144	67	52.7%	46.5%
Fall 2013	308	194	72	63.0%	37.1%

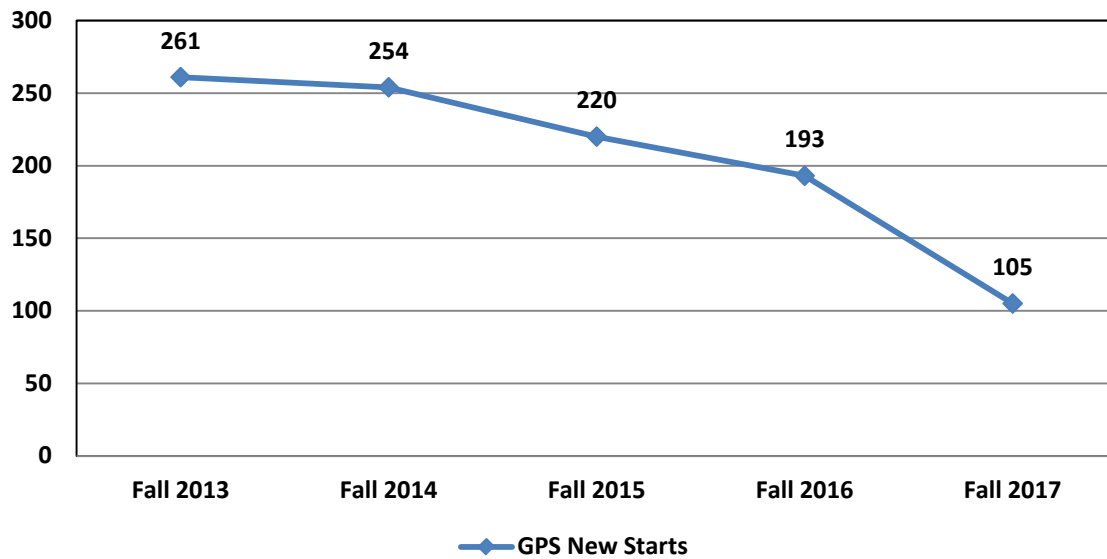
New Student Applications – First Time and Transfer

Term	Applied	Accepted	Enrolled	Acceptance Rate	Enrollment Rate
Fall 2017	2,514	1,802	405	71.7%	22.5%
Fall 2016	2,523	1,811	368	71.8%	20.3%
Fall 2015	2,251	1,540	318	68.4%	20.6%
Fall 2014	2,810	1,969	350	70.1%	17.8%
Fall 2013	2,894	1,798	368	62.1%	20.5%

New Undergraduate GPS Student Enrollment by Fall Term

Major	Fall 2013	Fall 2014	Fall 2015	Fall 2016	Fall 2017	Change	% Change
General Studies - Associates	0	0	0	8	10	10	
Business Administration	83	76	66	72	36	-47	-65.6%
Education	79	60	71	36	20	-59	-74.7%
Health Care Administration	--	--	--	--	8	8	
Information Technology	--	--	--	--	6	6	
Management	55	77	42	45	15	-40	-72.7%
Psychology	37	37	39	28	7	-30	-81.1%
Talent Development	--	--	--	--	2	2	
Undecided	7	2	0	5	1	-6	-85.7%
Total	261	254	220	194	105	-156	-59.8%

New GPS Undergraduate Enrollment by Fall Term



Enrollment

	Headcount	FT	PT	FTE Students
Residential College	1007	997	10	1,000
GPS-Undergraduate	481	379	102	413
Total Undergraduate	1,488	1,377	112	1,413
Graduate	279	226	53	244
Overall	1,767	1,602	165	1,657

*The formula used to calculate FTE students is: FT students + (1/3 * PT students)

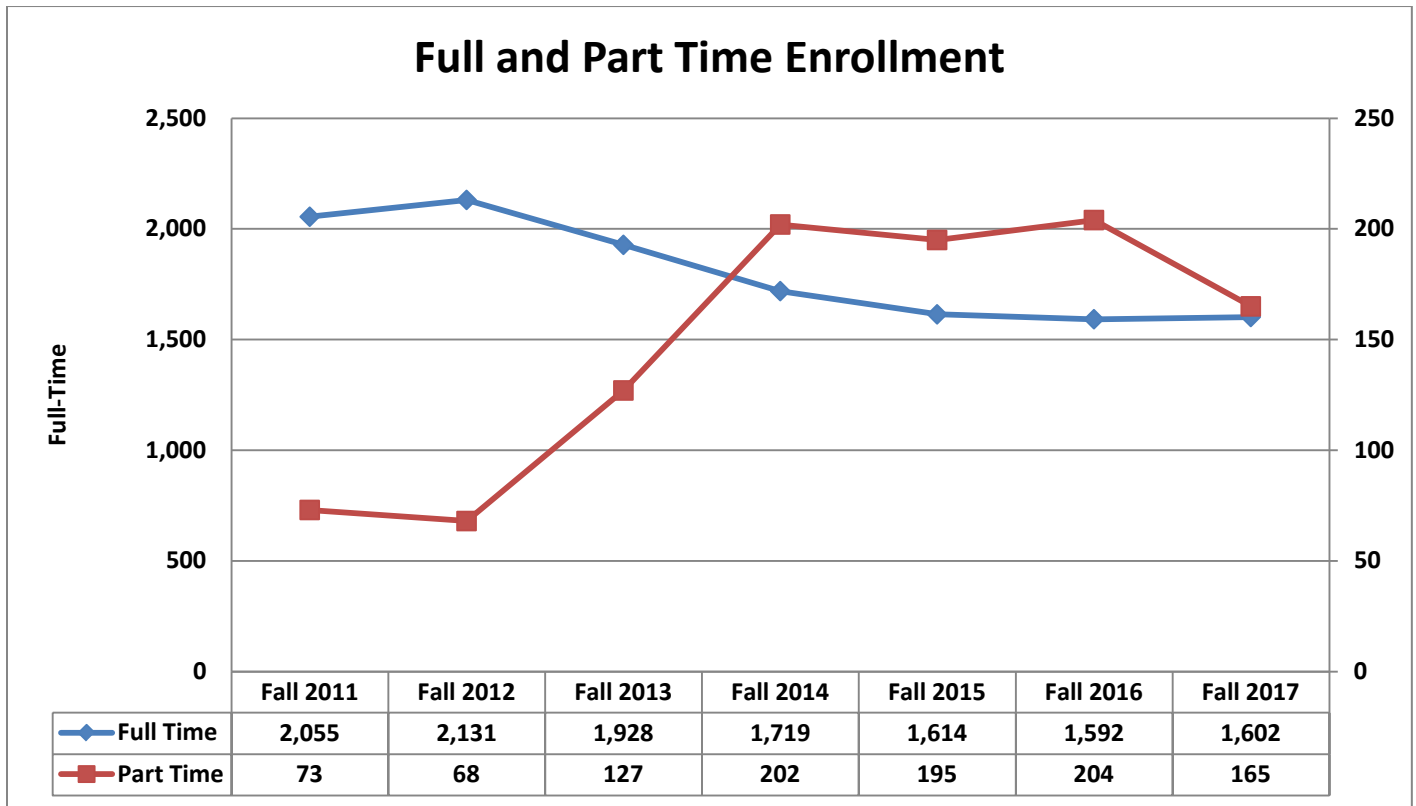
Enrollment by Term

	Fall 2011	Spring 2012	Fall 2012	Spring 2013	Fall 2013	Spring 2014	Fall 2014	Spring 2015	Fall 2015	Spring 2016	Fall 2016	Spring 2017	Fall 2017
GPS	1212	999	1255	1066	1108	962	957	880	884	854	811	718	760
Residential	916	830	944	832	947	856	964	858	925	860	985	872	1007
Total	2128	1829	2199	1898	2055	1818	1921	1738	1809	1714	1796	1590	1767

Student to Faculty Ratio by Fall Term

Term	FT Students	PT Students	FT Faculty	PT Faculty	Student/Faculty Ratio*
Fall 2017	1,602	165	77	62	17 to 1
Fall 2016	1,592	204	72	113	15 to 1
Fall 2015	1,614	195	71	81	17 to 1
Fall 2014	1,719	202	89	100	15 to 1
Fall 2013	1,928	127	81	125	15 to 1
Fall 2012	2,131	68	83	123	17 to 1
Fall 2011	2,055	73	77	168	16 to 1

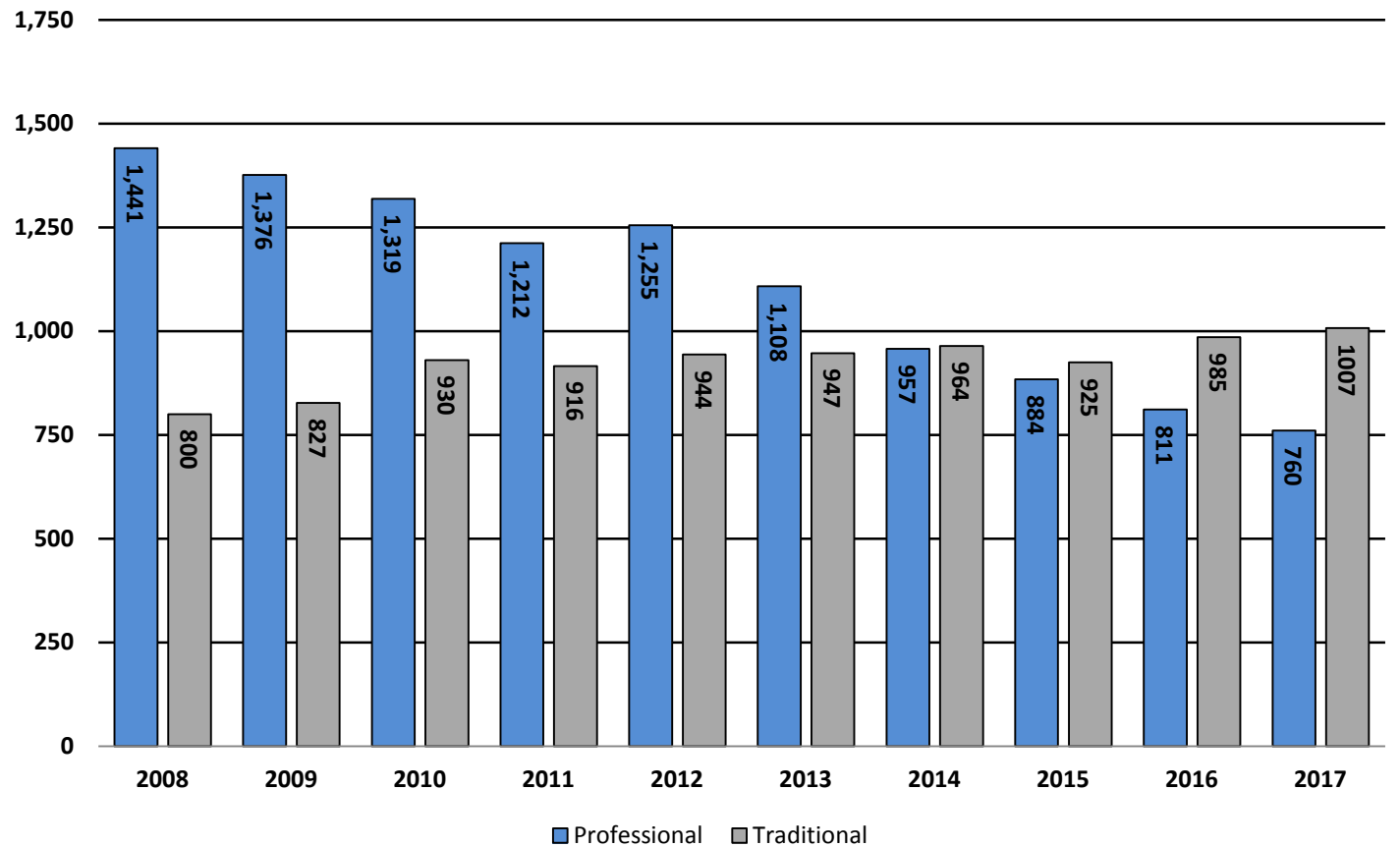
*Student to faculty ratio formula (FT students + 1/3 PT students) divided by (FT faculty + 1/3 PT faculty)



10 Year Enrollment Summary

Fall Term	Professional Studies	Traditional Students	Total
2017	760	1007	1,767
2016	811	985	1,796
2015	884	925	1,809
2014	957	964	1,921
2013	1,108	947	2,055
2012	1,255	944	2,199
2011	1,212	916	2,128
2010	1,319	930	2,249
2009	1,376	827	2,203
2008	1,441	800	2,241
Change over 10 Years	-681	207	-474

10 Year Enrollment Trend



Traditional Enrollment by Major

School/Major	Fall 2013	Fall 2014	Fall 2015	Fall 2016	Fall 2017	Change
General Studies - Associates	0	0	0	4	9	9
Art and Design	34	26	23	17	21	-13
Athletic Training	53	43	21	21	13	-40
Biology	68	48	55	62	99	31
Business	100	128	117	112	180	80
Chemistry	0	2	3	5	13	13
Computer Science					11	11
Criminal Justice	29	41	44	45	56	27
Digital Media	19	12	3	0	0	-19
Education	52	45	34	20	55	3
English	42	35	28	29	34	-8
Environmental Science	7	10	15	9	14	7
Environmental Studies					4	4
Field Guide/Naturalist	8	4	7	7	3	-5
Health Care Administration					0	0
History	20	23	15	19	18	-2
Independent Program of Study	0	0	1	2	0	0
Information Technology					0	0
Mathematics	27	14	19	20	17	-10
Museum Studies	11	12	12	7	6	-5
Nursing	66	71	77	76	123	57
Physical Education, K-12	15	9	14	7	12	-3
Political Science	18	13	12	13	12	-6
Psychology	39	33	40	27	53	14
Special Education				13	1	1
Sport Management	70	69	56	51	91	21
Sports Science	39	39	37	56	95	56
Talent Development					0	0
Undecided	230	287	292	363	67	-163
Total	947	964	925	985	1007	60

*majors may include multiple concentrations including licensure

Traditional Enrollment by Licensure Track

Major	Licensure Track	Fall 2013	Fall 2014	Fall 2015	Fall 2016	Fall 2017	Change
Art and Design	K-12	8	6	1	0	0	-8
Biology	7-12	1	1	3	0	0	-1
Business	7-12	0	0	1	1	0	0
Education	Interdisciplinary Studies K-6	30	23	18	13	3	-27
	Comprehensive K-12					1	1
	Education					2	
	Interdisciplinary Studies					22	22
	Interventionist K-8					1	1
	K-5					4	4
	History, 6-12					5	5
	Mathematics, 6-12					4	4
	Interdisciplinary Studies PreK-3	8	7	3	1	0	-8
	Middle School Licensure	7	6	2	0	0	-7
	Special Education Early Childhood	1	4	3	1	0	-1
	Special Education Modified and Comprehensive K-12	5	5	7	12	13	8
	Education Total	51	45	33	27	55	4
English	7-12/6-12	2	0	2	5	3	1
History	7-12/	6	6	2	4	4	-2
Mathematics	7-12	11	6	6	6	2	-9
Physical Education	K-12	15	9	14	7	16	1
Political Science	Government 7-12	1	0	0	1	0	-1
Psychology	9-12	1	0	0	0	0	-1
Total		96	73	62	51	80	-16

Fall 2017 Traditional Enrollment by Major and Class Code

School/Major	Freshmen	Sophomore	Junior	Senior	Total
General Studies - Associates	9	0	0	0	9
Art and Design	8	3	3	7	21
Athletic Training	0	0	6	7	13
Biology	53	20	14	12	99
Business	79	29	37	35	180
Chemistry	10	3	0	0	13
Computer Science	9	0	1	1	11
Criminal Justice	29	4	11	12	56
Education	30	8	10	7	55
English	7	9	4	14	34
Environmental Science	5	3	3	3	14
Environmental Studies	1	1	1	1	4
Field Guide/Naturalist	0	0	2	1	3
History	2	3	6	7	18
Independent Program of Study	0	0	0	0	0
Mathematics	3	4	2	8	17
Museum Studies	1	2	1	2	6
Nursing	49	22	16	36	123
Physical Education, K-12	7	3	1	1	12
Political Science	5	1	1	5	12
Psychology	22	9	12	10	53
Special Education	0	0	0	1	1
Sport Management	45	15	16	15	91
Sports Science	42	26	14	13	95
Undecided	56	7	2	2	67
Total	472	172	163	200	1,007

GPS Undergraduate Enrollment by Major

School/Major	Fall 2013	Fall 2014	Fall 2015	Fall 2016	Fall 2017	Change
GPS Associates	0	0	0	11	26	26
General Studies - Associates	0	0	0	11	26	26
GPS Gateway	323	302	237	150	122	-201
Business	82	76	79	51	40	-42
Criminal Justice	0	6	2	0	0	0
Education	109	94	65	39	28	-81
Health Care Administration					4	4
Information Technology					4	4
Management	80	77	49	37	30	-50
Nursing	0	1	0	0	0	0
Psychology	42	44	41	19	13	-29
Talent Development					2	2
Undecided	9	3	1	4	1	-8
GPS Bachelor	574	480	457	439	333	-241
Business	174	108	134	145	120	-54
Criminal Justice	0	0	1	0	0	0
Education	112	77	88	82	56	-56
Health Care Administration					6	6
Information Technology					5	5
Management	176	210	153	129	93	-83
Psychology	110	85	79	80	3	-107
Talent Development					3	3
Undecided	1	0	2	3	1	0
Total	897	782	694	600	481	-416

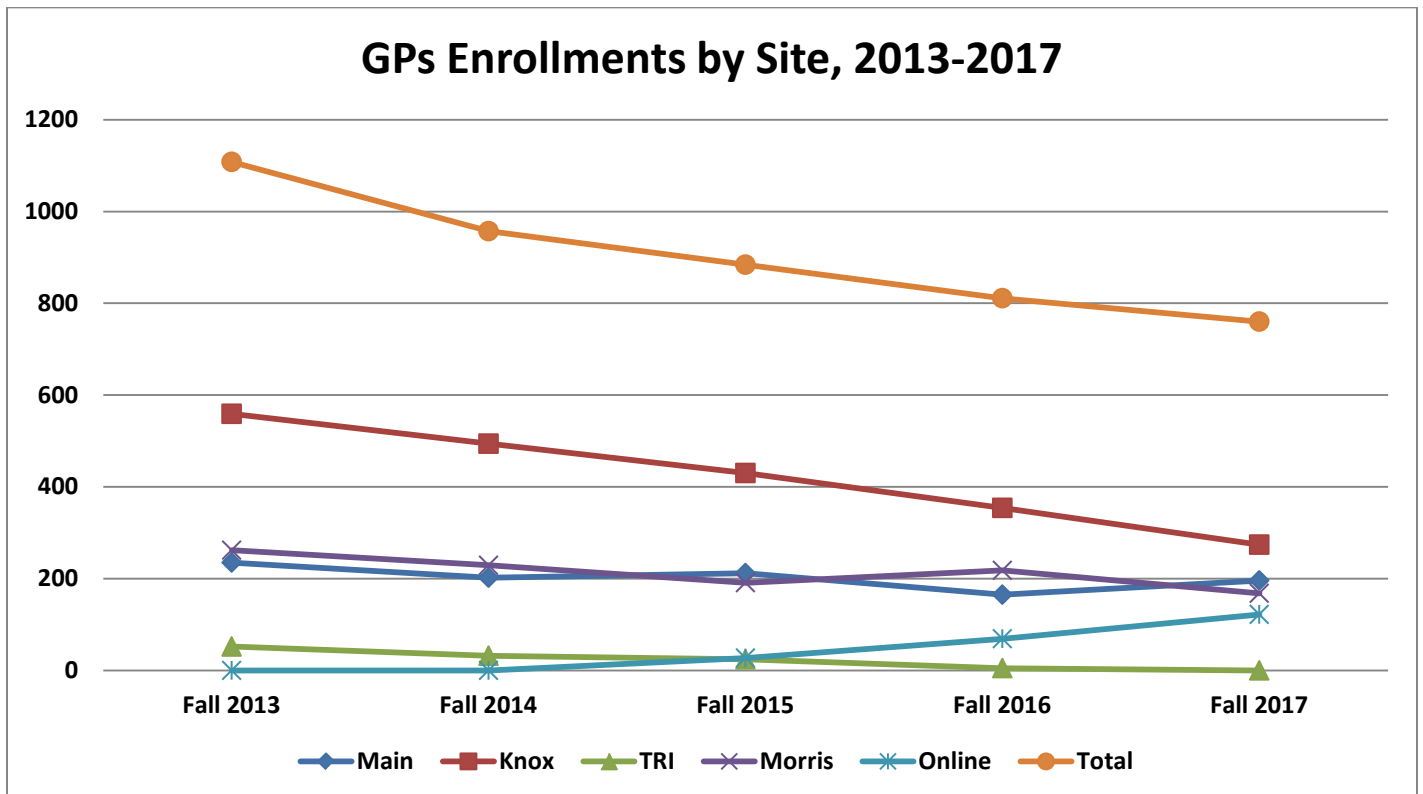
Graduate Enrollment by Major

School/Major	Fall 2013	Fall 2014	Fall 2015	Fall 2016	Fall 2017	Change
Master of Arts in Teaching	38	22	46	50	56	18
Master of Business Administration	60	58	70	66	64	4
Master of Education	51	44	25	28	50	-1
Masters of Human Resource Development/Talent Development	55	51	49	50	60	5
Masters of Organizational Training	7	0	0	0	0	-7
Masters of Nursing – Family Nurse Practitioner	0	0	0	12	46	46
Undecided	0	0	0	5	3	3
Total	211	175	190	211	279	68

GPS Enrollment by Site

Location	Fall 2013	Fall 2014	Fall 2015	Fall 2016	Fall 2017	Change
Main Campus	235	202	212	165	196	-39
Knoxville	559	494	430	354	274	-285
Tri-Cities	52	32	24	5	0	-52
Morristown	262	229	191	218	168	-94
Online	-	-	27	69	122	122
Total	1,108	957	884	811	760	-348

*Due to differences in college information systems, student enrollments are not available for fall 2011 and fall 2012 by site location



Demographics

Fall Enrollment by Gender and Ethnicity – All Students

College Total	Fall 2013	Fall 2014	Fall 2015	Fall 2016	Fall 2017	Change	% Change
Total Enrollment	2,055	1,921	1,809	1,796	1,767	-288	-14.0%
Male	877	866	791	819	812	-65	-7.4%
% Male	42.7%	45.1%	43.7%	45.6%	45.9%		
Female	1,178	1,055	1,018	977	955	-223	-18.9%
% Female	57.3%	54.9%	56.3%	54.4%	54.1%		
Caucasian	1,730	1,382	1,359	1,321	1,287	-443	-25.6%
% Caucasian	84.2%	71.9%	75.1%	73.6%	72.9%		
Black	223	221	230	246	263	40	17.9%
% Black	10.9%	11.5%	12.7%	13.7%	14.9%		
Other minority	63	75	89	100	98	35	55.6%
% Other Minority	3.1%	3.9%	4.9%	5.6%	5.5%		
Non Resident Alien	39	42	44	59	81	42	107.7%
% Non Resident Alien	1.90%	2.19%	2.43%	3.3%	4.6%		
Unknown	0	201	87	70	38	38	
% Unknown	0.00%	10.46%	4.81%	3.9%	2.1%		

Fall Enrollment by Gender and Ethnicity – Traditional Students

Traditional College	Fall 2013	Fall 2014	Fall 2015	Fall 2016	Fall 2017	Change	% Change
Total Enrollment	947	964	925	985	1,007	60	6.3%
Male	502	536	492	542	553	51	10.2%
% Male	53.0%	55.6%	53.2%	55.0%	54.8%		
Female	445	428	433	443	454	9	2.0%
% Female	47.0%	44.4%	46.8%	45.0%	45.2%		
Caucasian	702	550	589	623	609	-93	-13.3%
% Caucasian	74.1%	57.1%	63.7%	63.2%	60.6%		
Black	168	179	185	201	227	59	35.1%
% Black	17.7%	18.6%	20.0%	20.4%	22.5%		
Other minority	40	42	54	66	76	36	90.0%
% Other Minority	4.2%	4.4%	5.8%	6.7%	7.5%		
Non Resident Alien	37	41	44	54	75	38	102.7%
% Non Resident Alien	3.9%	4.3%	4.8%	5.5%	7.4%		
Unknown	0	152	53	41	20	20	
% Unknown	0.0%	15.8%	5.7%	4.2%	2.0%		

Fall Enrollment by Gender and Ethnicity – GPS Students

Graduate and Professional Studies	Fall 2013	Fall 2014	Fall 2015	Fall 2016	Fall 2017	Change	% Change
Total Enrollment	1,108	957	884	811	760	-348	-31.4%
Male	375	330	299	277	259	-116	-30.9%
% Male	33.8%	34.5%	33.8%	34.2%	34.1%		
Female	733	627	585	534	501	-232	-31.7%
% Female	66.2%	65.5%	66.2%	65.8%	65.9%		
Caucasian	1,028	832	770	698	678	-350	-34.0%
% Caucasian	92.8%	86.9%	87.1%	86.1%	89.2%		
Black	55	42	45	45	36	-19	-34.5%
% Black	5.0%	4.4%	5.1%	5.5%	4.7%		
Other minority	23	33	35	34	22	-1	-4.3%
% Other Minority	2.1%	3.4%	4.0%	4.2%	2.9%		
Non Resident Alien	2	1	0	5	6	4	200.0%
% Non Resident Alien	0.2%	0.1%	0.0%	0.6%	0.8%		
Unknown	0	49	34	29	18	18	
% Unknown	0.0%	5.1%	3.8%	3.6%	2.4%		

Fall Enrollment by Residency Status – All Students

Residence	Fall 2013	Fall 2014	Fall 2015	Fall 2016	Fall 2017	Change	% Change
In-State	1,643	1,490	1,390	1,310	1,244	-399	-24.3%
% In-State	80.0%	77.6%	76.8%	72.9%			
Out-of-State	373	389	375	427	441	68	18.2%
% Out-of-State	18.2%	20.2%	20.7%	23.8%			
International Students	39	42	44	59	82	43	110.3%
% International	1.9%	2.2%	2.4%	3.3%			
Total	2,055	1,921	1,809	1,796	1,767	-288	-14.0%

Fall Enrollment by Residency Status – Traditional Students

Residence	Fall 2013	Fall 2014	Fall 2015	Fall 2016	Fall 2017	Change	% Change
In-State	544	544	520	522	516	-28	-5.1%
% In-State	57.4%	56.4%	56.2%	53.0%			
Out-of-State	366	379	361	409	415	49	13.4%
% Out-of-State	38.6%	39.3%	39.0%	41.5%			
International Students	37	41	44	54	76	39	105.4%
% International	3.9%	4.3%	4.8%	5.5%			
Total	947	964	925	985	1,007	60	6.3%

Fall Enrollment by Residency Status – GPS Students

Residence	Fall 2013	Fall 2014	Fall 2015	Fall 2016	Fall 2017	Change	% Change
In-State	1,099	946	870	788	728	-371	-33.8%
% In-State	99.2%	98.9%	98.4%	97.2%			
Out-of-State	7	10	14	18	26	19	271.4%
% Out-of-State	0.6%	1.0%	1.6%	2.2%			
International Students	2	1	0	5	6	4	200.0%
% International	0.2%	0.1%	0.0%	0.6%			
Total	1,108	957	884	811	760	-348	-31.4%

Fall Undergraduate Enrollment by Student Status – All Students

Status*	Fall 2013	Fall 2014	Fall 2015	Fall 2016	Fall 2017	Change	% Change
Freshmen	320	298	295	324	344	24	7.5%
% Freshmen	17.40%	17.10%	18.20%	20.4%	23.1%		
Transfers	146	126	92	148	163	17	11.6%
% Transfers	7.9%	7.2%	5.70%	9.3%	10.9%		
Returners	1,378	1,322	1,232	1,113	981	-397	-28.8%
% Returners	74.7%	75.7%	76.1%	70.2%	66.0%		
Total	1,844	1,746	1,619	1,585	1,488	-356	-19.3%

*includes new GPS Students

Fall Undergraduate Enrollment by Student Status – Traditional Students

Status	Fall 2013	Fall 2014	Fall 2015	Fall 2016	Fall 2017	Change	% Change
Freshmen	296	284	269	312	323	27	9.1%
% Freshmen	31.3%	29.5%	29.1%	31.7%	32.0%		
Transfers	72	67	49	56	79	7	9.7%
% Transfers	7.6%	7.0%	5.3%	5.7%	7.8%		
Returners	579	613	607	617	605	27	4.7%
% Returners	61.1%	63.6%	65.6%	62.6%	60.2%		
Total	947	964	925	985	1007	60	6.3%

Fall Undergraduate Enrollment by Student Status – GPS Students

Status	Fall 2013	Fall 2014	Fall 2015	Fall 2016	Fall 2017	Change	% Change
Freshmen	24	14	26	12	21	-3	-12.5%
% Freshmen	2.7%	1.8%	3.7%	2.0%	4.4%		
Transfers	74	59	43	92	84	10	13.5%
% Transfers	8.2%	7.5%	6.2%	15.3%	17.5%		
Returners	799	709	625	496	376	-423	-52.9%
% Returners	89.1%	90.7%	90.1%	82.7%	78.1%		
Total	897	782	694	600	481	-416	-46.4%

Traditional Enrollment by Tennessee County

County	Student Count	% of Students	County	Student Count	% of Students
Anderson*	8	0.79%	Monroe*	4	0.40%
Blount*	13	1.29%	Montgomery	3	0.30%
Bradley*	8	0.79%	Putnam*	1	0.10%
Carroll	1	0.10%	Rhea*	3	0.30%
Carter*	11	1.09%	Roane*	9	0.89%
Cheatham	1	0.10%	Robertson	2	0.20%
Claiborne*	7	0.70%	Rutherford	9	0.89%
Cocke*	18	1.79%	Scott*	1	0.10%
Cumberland*	4	0.40%	Sevier*	24	2.38%
Davidson	4	0.40%	Shelby	11	1.09%
Franklin*	1	0.10%	Sullivan*	22	2.18%
Gibson	1	0.10%	Sumner	10	0.99%
Giles	3	0.30%	Unicoi*	2	0.20%
Grainger*	5	0.50%	Union*	1	0.10%
Greene*	128	12.71%	Washington*	38	3.77%
Hamblen*	20	1.99%	Weakley	1	0.10%
Hamilton*	28	2.78%	White*	2	0.20%
Hancock*	1	0.10%	Williamson	8	0.79%
Hardeman	2	0.20%	Wilson	2	0.20%
Hardin	1	0.10%	TN Total	516	51.24%
Hawkins*	22	2.18%	Out-Of-State	415	41.21%
Henry	1	0.10%	International	76	7.55%
Hickman	1	0.10%			
Humphreys	2	0.20%			
Jefferson*	13	1.29%			
Johnson*	2	0.20%			
Knox*	40	3.97%			
Lincoln	1	0.10%			
Loudon*	5	0.50%			
Macon*	1	0.10%			
Marion	2	0.20%			
Maury	2	0.20%			
McMinn*	4	0.40%			
Meigs*	1	0.10%			
			Total	1,007	100.00%

*Denotes a county that's in the Appalachian Region

GPS Enrollment by Tennessee County

County	# of Students	% of students
Anderson*	31	4.08%
Bedford	1	0.13%
Blount*	31	4.08%
Campbell*	10	1.31%
Carter*	7	0.96%
Claiborne*	13	1.71%
Cocke*	25	3.20%
Cumberland*	3	0.39%
Fentress*	1	0.13%
Grainger*	13	1.71%
Greene*	109	14.34%
Hamblen*	99	13.03%
Hamilton*	5	0.66%
Hancock*	9	1.18%
Hawkins*	28	3.68%
Jefferson*	34	4.47%
Knox*	169	22.24%
Loudon*	19	2.50%
McMinn*	1	0.13%
Monroe*	9	1.18%
Morgan*	1	0.13%
Rhea*	1	0.13%
Roane*	25	3.20%
Scott*	2	0.26%
Sevier*	24	3.16%
Shelby	1	0.13%
Sullivan*	21	2.76%
Union*	2	0.26%
Washington*	32	4.21%
Weakley	1	0.13%
Wilson	1	0.13%
Out-of-State	32	4.21%
International	6	0.79%
Total	760	100.00%

*Denotes a county that's in the Appalachian Region

Overall Enrollment by State

State	Traditional	GPS	Total	% from State
Alabama	9	1	10	0.54%
Arizona	1		1	0.06%
Arkansas	1		1	0.05%
California	2	1	3	0.16%
Colorado	2		2	0.11%
Connecticut	1		1	0.05%
Florida	78		78	4.24%
Georgia	71	4	75	4.08%
Idaho	1		1	0.05%
Illinois	9	3	12	0.65%
Indiana	5		5	0.27%
Kentucky	18		18	0.98%
Louisiana	1		1	0.05%
Maryland	3		3	0.16%
Massachusetts	1		2	0.11%
Michigan	5		5	0.27%
Minnesota	4		4	0.22%
Mississippi	1		1	0.05%
Missouri	2		3	0.16%
New Hampshire	1	1	1	0.05%
New Jersey	9	2	10	0.54%
New York	7		9	0.49%
North Carolina	88	1	89	4.84%
Ohio	11		12	0.65%
Pennsylvania	8		8	0.44%
South Carolina	38	1	39	2.12%
Tennessee	516	728	1244	71.56%
Texas	11		11	0.60%
Virginia	23	9	32	1.74%
Washington	1		1	0.05%
Wisconsin	3		3	0.16%
International Student	76	6	82	4.46%
Total	1007	760	1,767	100.0%

International Student Enrollment by Country

Rank	Country	RES	GPS	Total #	Total %
1	Canada	16		16	0.90%
2	France	6		6	0.34%
3	El Salvador	5		5	0.28%
4 (tie)	Gabon	4		4	0.23%
4 (tie)	Germany	4		4	0.23%
4 (tie)	Spain	4		4	0.23%
7 (tie)	Bahamas	2	1	3	0.17%
7 (tie)	Mexico	3		3	0.17%
9 (tie)	Bahrain	2		2	0.11%
9 (tie)	Belgium	1	1	2	0.11%
9 (tie)	Argentina	2		2	0.11%
9 (tie)	Brazil	2		2	0.11%
9 (tie)	Haiti	2		2	0.11%
9 (tie)	Netherlands	2		2	0.11%
9 (tie)	New Zealand	2		2	0.11%
9 (tie)	Norway	2		2	0.11%
9 (tie)	Portugal	1	1	2	0.11%
9 (tie)	Slovakia	2		2	0.11%
9 (tie)	United Kingdom	2		2	0.11%
19 (tie)	Australia	1		1	0.06%
19 (tie)	Austria	1		1	0.06%
19 (tie)	Croatia	1		1	0.06%
19 (tie)	Ecuador	1		1	0.06%
19 (tie)	Estonia	1		1	0.06%
19 (tie)	Greece	1		1	0.06%
19 (tie)	Montenegro	0	1	1	0.06%
19 (tie)	Netherlands (Antilles)	1		1	0.06%
19 (tie)	Nigeria	1		1	0.06%
19 (tie)	Peru	1		1	0.06%
19 (tie)	Seychelles	1		1	0.06%
19 (tie)	South Korea	0	1	1	0.06%
19 (tie)	Sweden	1		1	0.06%
19 (tie)	Turkey	1		1	0.06%
19 (tie)	Vietnam	0	1	1	0.06%
	International Total	76	6	82	4.46%
	United States	931	754	1685	95.36%
	Grand Total	1007	760	1767	100.00%

Includes both Traditional and GPS students

Traditional College Class Size – Fall Term

Term	Sections	Enrollment	Average Class Size
Fall 2017	374	6,146	16.4
Fall 2016	341	5,324	15.6
Fall 2015	283	4,226	14.9
Fall 2014	300	4,342	14.5
Fall 2013	303	4,247	14.0

*Does not include one on one teaching

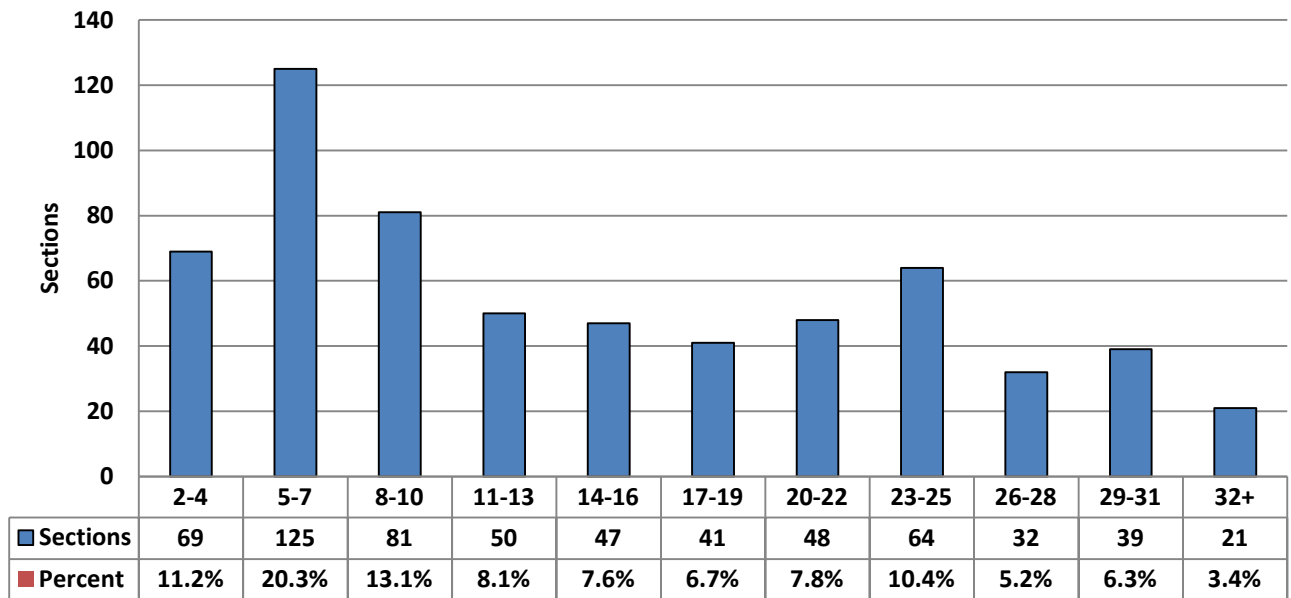
Graduate and Professional Student Class Size – Fall Term

Term	Sections	Enrollment	Average Class Size
Fall 2017	243	2,847	11.7
Fall 2016	284	3,018	10.6
Fall 2015	241	2,684	11.1
Fall 2014	259	2,883	11.1
Fall 2013	260	2,930	11.3

*Does not include one on one teaching

Fall 2016 Class Size by Category

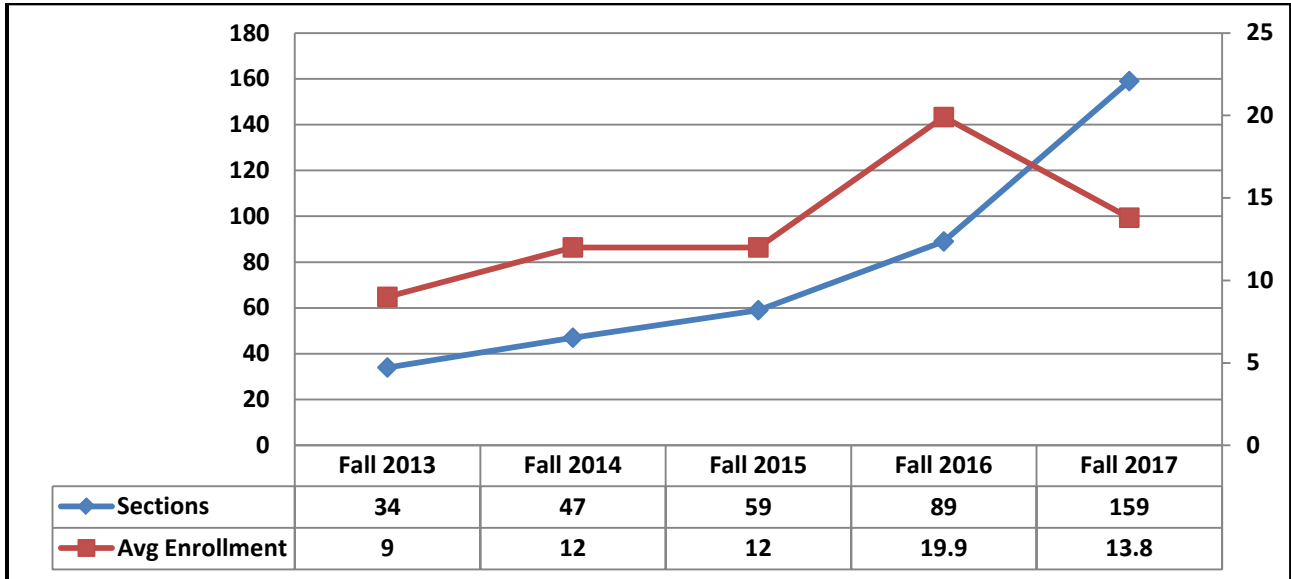
Fall 2017 Course Sections



Online Course Enrollment by Academic Year															
	2013-14			2014-15			2015-16			2016-17			2017-18		
Courses	FA	SP	SU	FA	SP	SU	FA	SP	SU	FA	SP	SU	FA	SP	SU
Sections	34	27	31	47	67	27	59	76	36	89	108	68	159	N/A	N/A
Enrollments	309	231	232	575	584	240	686	848	412	1,684	1,744	1,184	2,193	N/A	N/A
Avg. Enrollment	9	9	7	12	9	9	12	11.2	11.4	19.9	16.1	17.4	13.8	N/A	N/A

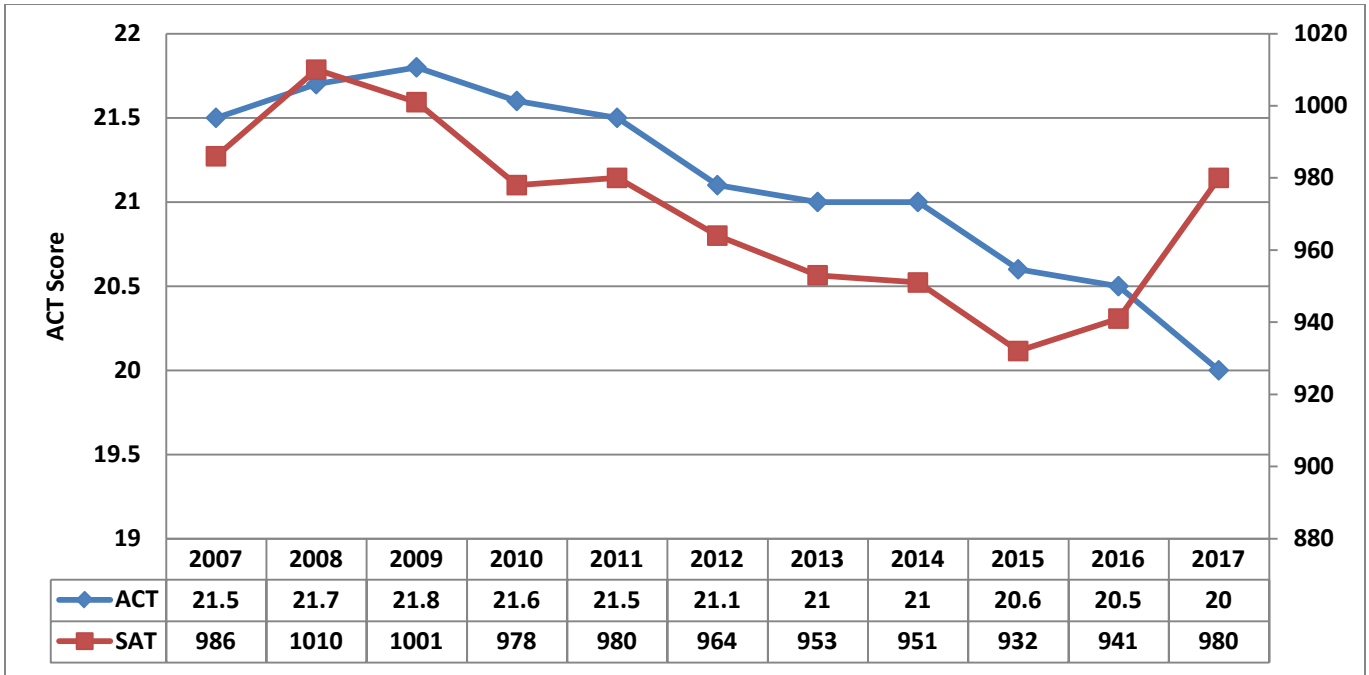
*Section and enrollment counts for Spring and Summer 2017 are not available at this time

Online Course Enrollment by Fall Term

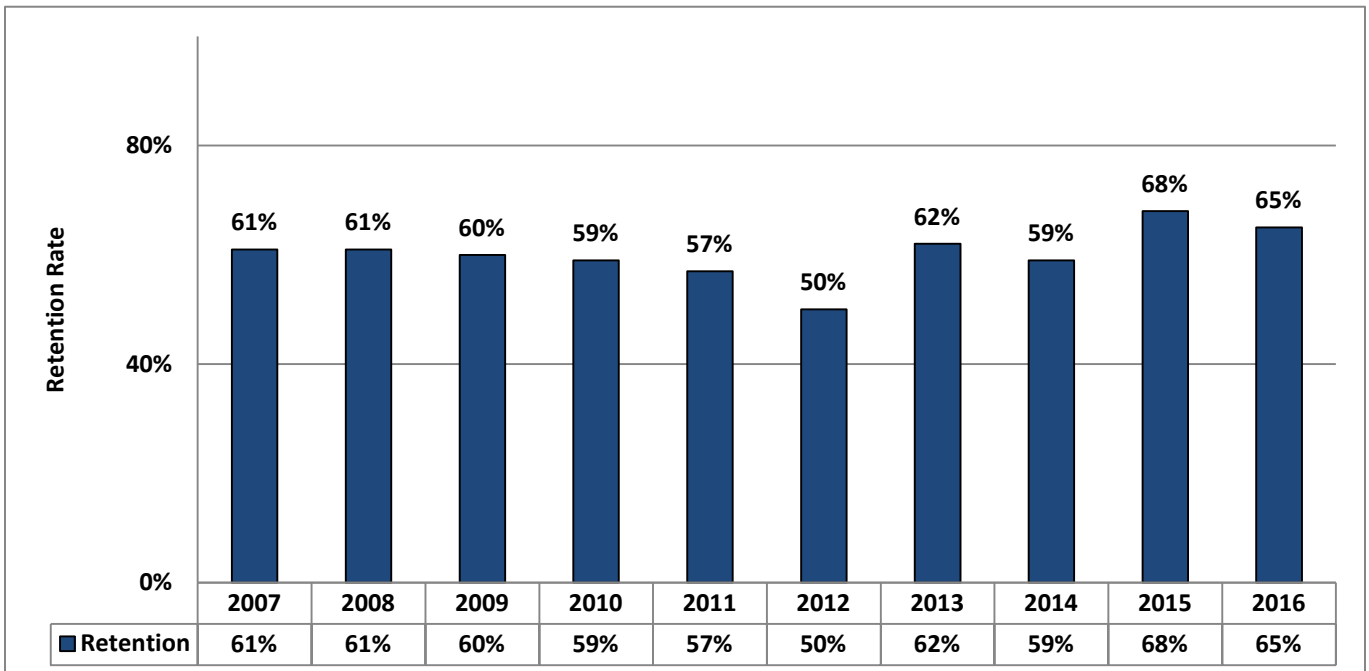


Trends

Average Incoming ACT and SAT Score – 10 Year Trend



Fall Freshmen Returning for Sophomore Year*



*Combined GPS and Traditional College First-time, Full-time Freshman cohort, as reported to IPEDS.

Fall to Fall Freshmen Retention Rate

Fall 2016 to Fall 2017 Retention Rate				
	Total Cohort	# Retained	# Not Retained	% Retained
Traditional Undergraduates	308	200	108	64.9%
Adult & Working Professionals	10	8	2	80.0%
Grand Total	318	208	110	65.4%

Fall 2016 cohort represents the number of first-time, full-time, degree seeking undergraduate students enrolled during fall 2016

Fall to Fall Freshman Retention by Ethnicity

Ethnicity	F16 Cohort	Returned F17	Retention Rate
White	202	136	67.3%
Black or African American	67	40	59.7%
Asian	1	0	0.0%
Hispanic	20	12	60.0%
Two or More Races	6	3	50.0%
Non Resident Alien	16	13	81.3%
Not Reported	6	4	66.7%
Total	318	208	65.4%

Fall 2016 cohort represents the number of first-time, full-time, degree seeking undergraduate students enrolled during fall 2016

Fall to Fall Freshman Retention by Pell Status

Pell Status	F16 Cohort	Returned F17	Retention Rate
Received Pell Award	187	113	60.4%
Did not Receive Pell	131	94	71.8%
Overall	318	208	65.4%

Fall to Fall Freshman Retention by Athletic Status

Athletic Status	F16 Cohort	Returned F17	Retention Rate
Fall 16-Scholarship Athlete	100	69	69.0%
Fall 16-Non-Scholarship Athlete	106	71	67.0%
Fall 16 All Athlete	206	141	68.5%
Fall 16 Non-Athletes	112	67	59.8%
Overall	318	208	65.4%

Total Degrees by Year

Student Type	2012-13	2013-14	2014-15	2015-16	2016-17	Total
Residential	162	138	169	166	183	818
Undergraduate GPS	296	304	215	228	273	1,316
Graduate GPS	96	141	118	99	122	576
Total	554	583	502	493	578	2,710

Traditional Graduates by Major and Year

Major	2012-13	2013-14	2014-15	2015-16	2016-17	Total
Art	6	4	10	9	5	34
Athletic Training	3	5	6	4	6	24
Biology	16	8	15	11	19	69
Education (RC)	23	12	12	6	11	64
Business (RC)	26	23	29	28	35	141
Chemistry					1	1
Criminal Justice			3	11	12	26
Digital Media (F&B)	8	6	7	0	0	21
English	17	11	11	6	5	50
Environmental Science	3	1	1	4	2	11
Field Guide/Naturalist		3	2	0	4	9
History	3	2	8	4	5	22
Independent Program of Study			1	0	2	3
Mathematics	9	7	6	2	4	28
Museum Studies	6	1	6	5	3	21
Nursing			14	29	14	57
Physical Education	7	2		3	1	13
Political Science	2	9	5	3	3	22
Psychology (RC)	7	12	10	12	10	51
Sports Science	18	14	11	10	15	68
Sport Management	8	18	12	19	26	83
Total RC	162	138	169	166	183	818

GPS Graduates by Major and Year

	2012-13	2013-14	2014-15	2015-16	2016-17	Total
Associate of Arts-General Studies					3	3
Education K-6 (BAED) (GPS)	68	72	41	35	48	264
BSOM/ BSM (GPS)	136	91	69	72	100	468
BSBA (GPS)	85	82	66	85	71	389
Psychology Behavioral Health (GPS)	7	59	39	36	51	192
GPS Undergraduate Total	296	304	215	228	273	1,316
Master of Arts Teaching (MA)	23	35	17	28	35	138
MAED Curriculum & Instruction (MA)	42	49	41	14	23	169
OTE Org Training (MA)		3	1			4
HRDE Human Resource Development (MA)	31	21	25	23	26	126
MBA Master of Business Admin		33	34	34	38	139
GPS Graduate Total	96	141	118	99	122	576
Total GPS	392	445	333	327	395	1,892

Graduation Rates by Ethnicity

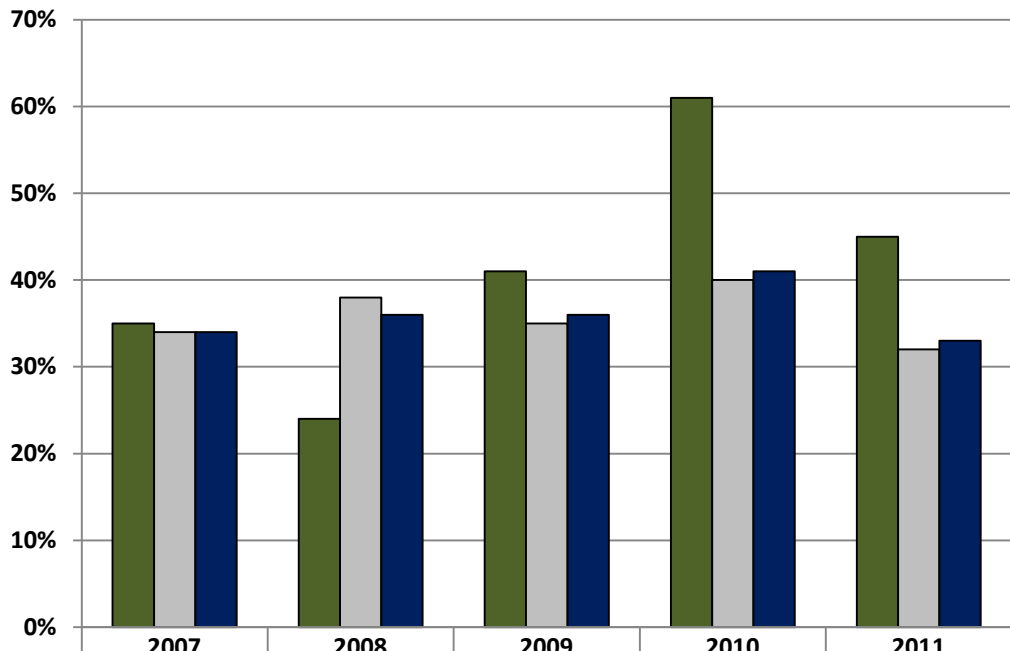
Graduation Rate	2011 Cohort	Grad. w/i 4rys	Grad. w/i 5rys	Grad. w/i 6rys	6 Yr. Grad. Rate
Nonresident Alien	12	5	6	6	50.0%
Hispanic/Latino	11	2	2	2	18.2%
American Indian or Alaska Native	1	1	1	1	100.0%
Asian	2	0	0	0	0.0%
Black or African American	62	8	10	10	16.1%
Native Hawaiian or Other Pacific Islander	0	0	0	0	
White	211	37	74	79	37.4%
Two or More Races	0	0	0	0	
Unknown	6	1	2	2	33.3%
Total	305	54	95	100	32.8%

*The Fall 2009 represents the number of first-time, full-time, degree seeking undergraduate students enrolled during fall 2009

Graduation Rates by Pell Status

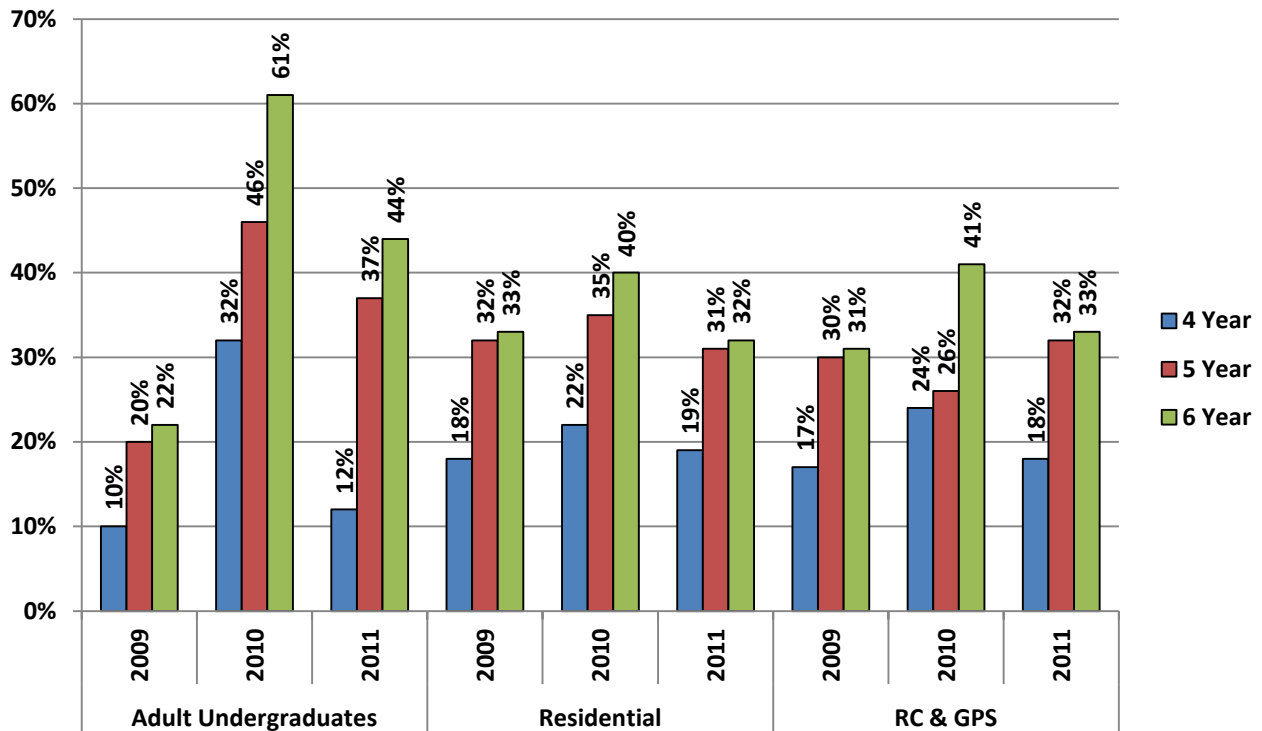
Graduation Rate	Received Pell	Did not Receive Pell	Total
2011 Cohort	200 (65.6%)	105 (34.4%)	305
Graduated within 4 Years	23 (11.5%)	33 (31.4%)	56 (18.4%)
Graduated within 5 Years	48 (24.0%)	48 (45.7%)	96 (31.5%)
Graduated within 6 years	52 (26.0%)	50 (47.6%)	102 (33.4%)

Cohort Graduation Rates (IPEDS) (Percent of Cohort Graduated)



■ Adult Undergraduates	35%	24%	41%	61%	45%
■ Residential College	34%	38%	35%	40%	32%
■ RC & GPS	34%	36%	36%	41%	33%

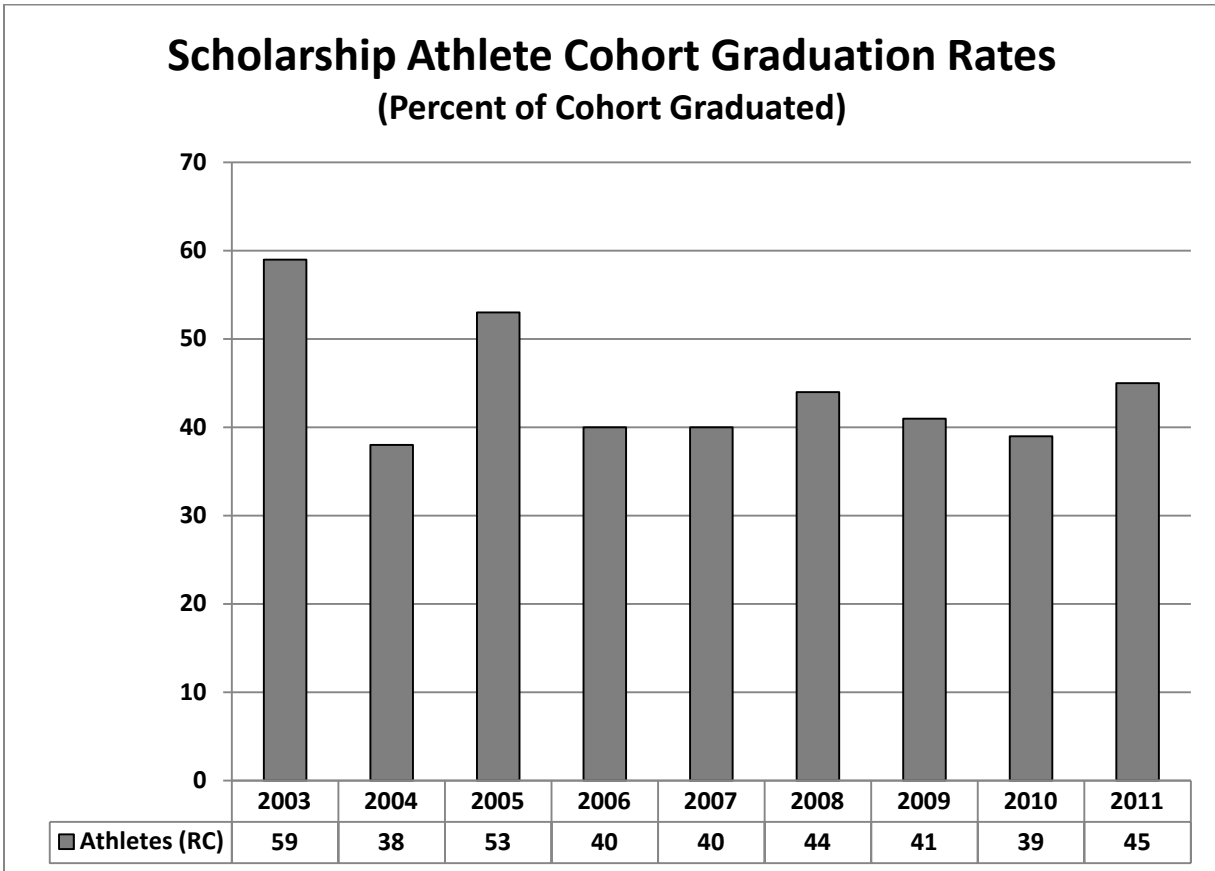
4-5-6 Year Cohort Graduation Rates



Graduation Rates Athletic Status

Graduation Rate	All Athletes*	Total Non-Athletes	Total
2011 Cohort	120	185	305
Graduated within 4 Years	27 (22.5%)	29 (15.7%)	56 (18.4%)
Graduated within 5 Years	37 (30.8%)	59 (31.9%)	96 (31.5%)
Graduated within 6 years	39 (32.5%)	63 (34.1%)	102 (33.4%)

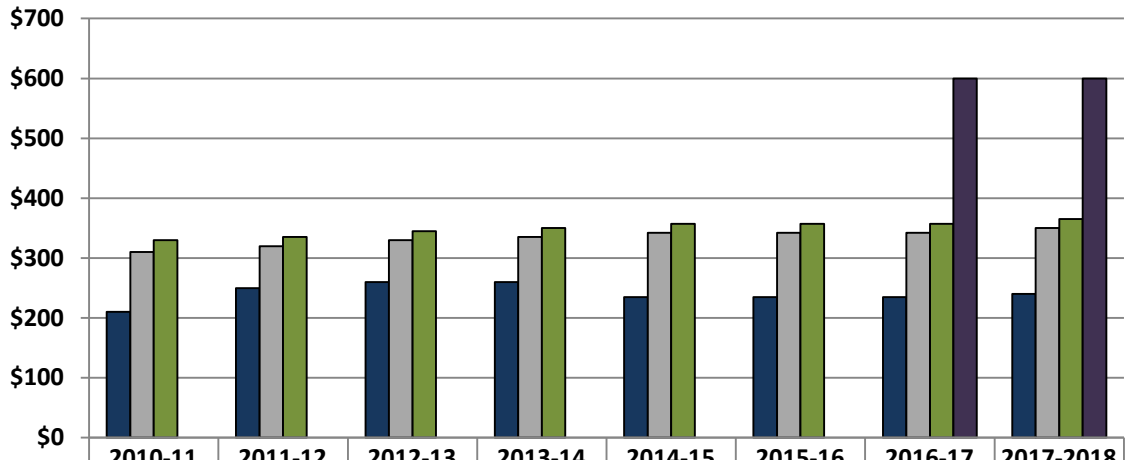
Includes scholarship and non scholarship athletes



Intentionally Left Blank

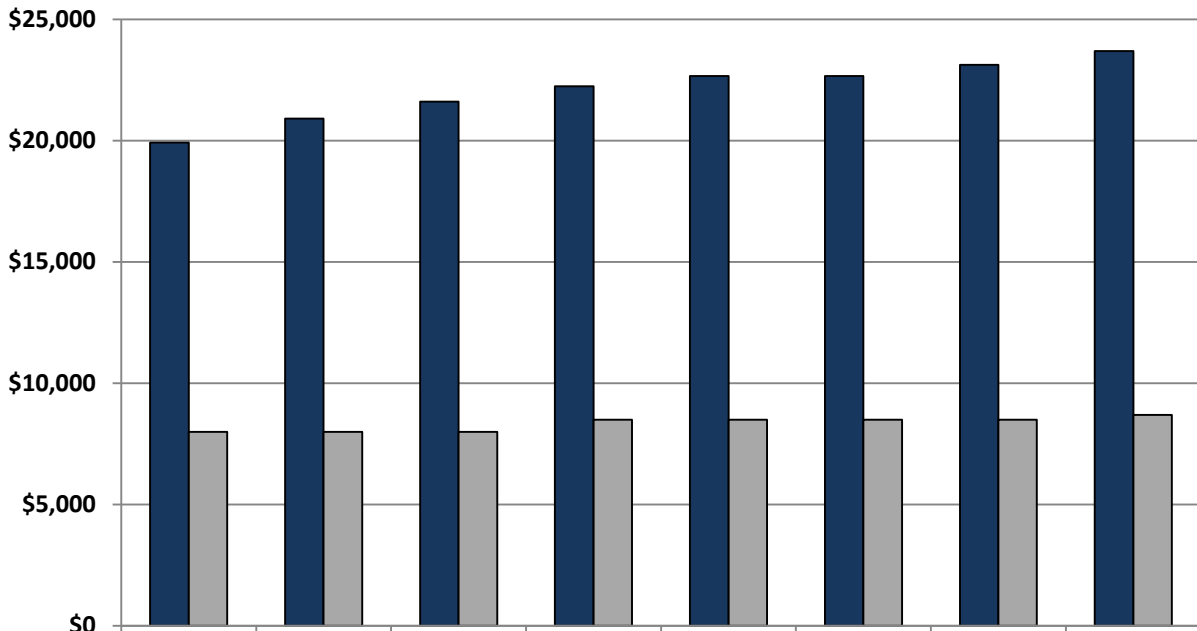
Tuition and Financial Aid

Graduate & Professional Studies Cost per Semester Hour



■ Gateway	\$210	\$250	\$260	\$260	\$235	\$235	\$235	\$240
■ Bachelor Degrees	\$310	\$320	\$330	\$335	\$342	\$342	\$342	\$350
■ Graduate	\$330	\$335	\$345	\$350	\$357	\$357	\$357	\$365
■ MSN-FNP	0	0	0	0	0	0	\$600	\$600

Traditional College Room and Board



■ Tuition	\$19,920	\$20,910	\$21,620	\$22,250	\$22,670	\$22,670	\$23,125	\$23,700
■ Room & Board	\$8,000	\$8,000	\$8,000	\$8,500	\$8,500	\$8,500	\$8,500	\$8,700

Students Eligible and Receiving Pell – Fall 2016

Students	Students	Pell Eligible	% Eligible	Receiving Pell	% Receiving Pell
Traditional	985	595	60.4%	494	50.2%
GPS-Undergraduate	600	411	68.5%	335	55.8%
Total	1,585	1,006	63.5%	829	52.3%

Students Loan Information – Fall 2016

Students	Sub. Loan		Unsub. Loan		Plus/Private Loan		Total Loans	
	Number	Avg.	Number	Avg.	Number	Avg.	Number	Avg.
Traditional	541	\$2,131	503	\$1,657	280	\$4,115	687	\$4,699
GPS-Undergraduate	259	\$2,062	367	\$2,574	23	\$4,506	415	\$4,229
Total	800	\$2,109	870	\$2,044	303	\$4,145	1,102	\$4,522

Students may be counted in multiple categories if they received loans from multiple sources. Total loans represent distinct students

Tusculum College Programs of Study 2017-18

Associate of Arts

Associate of Arts in General Studies

Bachelor of Arts Majors (and Concentrations)

Art & Design

- a. Studio Art
- b. Visual Communication Design

Business Administration

- a. Accounting
- b. Economics
- c. Entrepreneurship
- d. Information Technology
- e. Management
- f. Nonprofit Management

Criminal Justice

Education-Interdisciplinary Studies

English

- a. Creative Writing
- b. Literature
- c. English Education, 6-12

Environmental Science

Environmental Studies

Field Guide/Naturalist (Phased out effective Spring 2018)

History

- a. History Education, 6-12

Museum Studies

Physical Education

Political Science

- a. Government Education 6-12

Psychology

- a. Behavioral Health
- b. General Experimental

Special Education

Sport Management

Sports Science

Talent Development

Bachelor of Science Majors (and Concentrations)

Athletic Training (Phased out effective Spring 2019)

- a. Pre-Physical Therapy (Phased out effective Spring 2019)

Biology

- a. Medical Pre-Professional
- b. Pre-Pharmacy
- c. Environmental Science

Chemistry

- a. Medical Pre-Professional
- b. Pre-Pharmacy

Computer Science

Health Care Management

Information Technology

Mathematics

- a. Biology
- b. Chemistry
- c. Computer Science
- d. Mathematics Education 6-12

Nursing

Minors

Accounting, Art & Design Studio, Biology, Business, Chemistry, Civic Leadership and Engagement, Coaching, Computer Science, Creative Writing, Criminal Justice, Environmental Science, Gender Studies, History, Information Technology, Journalism, Literature, Marketing, Mathematics, Museum Studies, Political Science, Pre-Law, Psychology, Public History, Religious Studies, Social Media Management, Theatre, Visual Communication Design, Web Design

Graduate and Professional Studies Programs (and Concentrations)

Associate of Arts in General Studies

Gateway Program

Bachelor of Science in Management

- a. Accounting (concentration or minor)
- b. Human Resource Management (concentration)
- c. Marketing (concentration or minor)
- d. Social Media Management (concentration or minor)
- e. Web Design (minor only)

Bachelor of Science in Business Administration

- a. Accounting (concentration or minor)
- b. Human Resource Management (concentration)
- c. Marketing (concentration or minor)
- d. Social Media Management (concentration or minor)
- e. Web Design (minor only)

Bachelor of Arts in Education/-Interdisciplinary Studies

Bachelor of Arts in Psychology with Behavioral Health concentration

Bachelor of Arts in Criminal Justice

Bachelor of Arts in Talent Development

Bachelor of Science in Health Care Management

Bachelor of Science in Information Technology

Master of Arts in Education

- a. Curriculum and Instruction

Master of Arts in Teaching

Master of Arts in Talent Development

Master in Business Administration

- a. Human Resource Management
- b. General Management
- c. Healthcare Administration
- d. Nonprofit Management

Master of Science in Nursing- Family Nurse Practitioner