

# 1999 International 5000 PAYSTAR ISM-305HP/9LL/20/46K AXLES

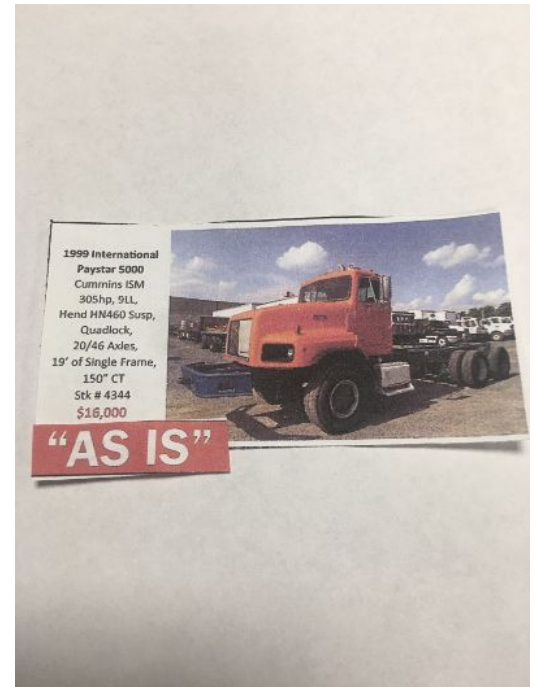
Price: \$16,000  
19' OF SINGLE CHANNEL FRAME  
Condition: Used  
Stock#: HEJ/J&M#4344 08/31/20  
Listing#: 717695  
Type: Truck  
Category: Cab and Chassis  
Location: GREENCASTLE, Pennsylvania

**Call 717-446-1335**

**HAROLD JONES USED TRUCKS,  
TRAILERS & ETC. SALES**  
HAROLD JONES  
15332 MOLLY PITCHER HIGHWAY -  
ROUTE 11 IN PA  
EXIT 1 OR 3 OFF INTERSTATE 81 IN  
PENNSYLVANIA  
GREENCASTLE, Pennsylvania 17225

Description: 66,000# GVWR, AIR BRAKES, AIR HORN,  
VERTICAL EXHAUST, EXTENDED FRONT FRAME,  
QUAD LOCK, 19' OF SINGLE CHANNEL FRAME,  
150" CAB TO C/L OF TANDEM, SELLING FOR  
\$16,000.00 IN "AS IS" CONDITION & OTHER  
OPTIONS. CONTACT HAROLD JONES CELL 717-  
446-1335 WITH QUESTIONS.

Power Steering: Yes  
Title Information: Clear Title  
Transmission Type: 9LL  
Engine Horsepower: 305  
Axle: Tandem  
Engine Model: ISM TURBO DIESEL  
Satellite Radio: No  
Abs: Yes  
Suspension Type: HN460  
Structural Damage: No  
Apu: No  
Suspension Manufacturer: Hendrickson  
Interior Type: Standard



Front Axle Rating: 20000 lbs  
Condition: Average  
Air Ride Driver Seat: Yes  
Axle Configuration: 6X4  
Fuel Tank: RH STEP TYPE  
Sunvisor: No  
Mp3: No  
Engine Brake: No  
Rear Axle Rating: 46000 lbs  
Engine Make: Cummins  
Color: Orange

*All information listed is believed accurate. Pictures, specifications, prices, and all information is subject to change and correction without notice. All liability is expressly disclaimed.*