

# 2018 Morgan 16 FT

Price:

*Contact Seller*

Condition:

Stock#:

Listing#:

Type:

Category:

Location:

VIN:

New

X2601H

606963

Truck Part

Truck Body Only

Homestead, Florida

00MGA18RB51759003

Subframe o 3 I Beam  
Crossmembers on the 16  
Centers with 4 Long rail w/o  
Wheel pans Set Frame Width  
to 34 o Mylar Tape is  
Applied Between all Steel  
Subframe Components and  
Extruded Aluminum Lower  
Bottom Rails to Prevent  
Corrosion Mounting o  
Flatbed Fixed CA Floor o 1  
1/8 Laminated Hardwood  
Fastened to Subframe with 2  
Countersunk Screws Per  
Floor Board Per  
Crossmember in a Staggered  
Pattern. Floor Boards are  
Ship Lapped and Pre-  
undercoated for Protection  
from Elements Threshold o  
Steel Galvanized Angle Flush  
to Rear Rear Door o Whiting  
Overhead-Aluminum  
Covered White Spacer Kit  
for Monobolted Overhead  
Door Installation Vinyl Seal  
Kit with Monobolted  
Overhead Door Rear Frame o  
Header Sub-component  
Galvannaed with 35 or S36  
Lights o Endplate Sub-

Description:

component for Dry Freight  
for Overhead Door for 4.12  
V-Groove Endplate o Post  
Reinforcement for Single  
Lamp Posts Skin-sides o  
0.040 Aluminum Pre-painted  
White o Rivets for Front and  
Sidewalls-16 Body Side Wall  
o Extruded Aluminum Top  
and Bottom Rail with 1 3/8  
Deep Galvanized Steel Z-  
Shaped Vertical Posts  
Installed on 16 Centers  
Curbside o Extruded  
Aluminum Top and Bottom  
Rails with 1 3/8 Deep  
Galvanized Steel Z-Shaped  
Vertical Posts Installed on 16  
Centers Roadside Liner-Side  
o Lined-Sides 3/8 Plywood  
Full Interior Ties o Series E  
track Surface Mounted o  
Locate Surface Mounted  
Row at 40 From Top of Floor  
to Center of Track Front End  
o Aerodynamic Aluminum  
Radii with Steel Z Posts  
Skins-Front o 0.040  
Aluminum Pre-painted White  
Liner-Front o Liner-Front  
Plywood Full Roof o 0.032  
One Piece Aluminum Sheet  
with Anti-Sag Roof Bows on  
24 Centers with Crowned  
Roof Design Which Prevents  
Water/Ice Pooling o  
Aerodynamic Aluminum  
Radius and Poly-Tuff Corner  
Caps Interior Lights o One  
interior LED Dome Lamp o  
Total Dome Light 1 o Switch  
with Indicator Mounted in  
Cab Dash Miscellaneous o  
Ship Loose in Body Exterior  
Lights o Tecniq S36 LED  
Sealed Clearance Light, Per  
FMVSS-108 Installed in  
Front Corner Caps, Side Top  
Rails and Five Across Rear  
Header o Rear Main Harness  
for LED Lights o Converter  
Foreign Chassis Wiring to  
Domestic Wiring o Tecniq  
LED Rear Lights Recessed in  
Rear Post/Domestic

Combined Stop Turn Tail  
and Backup Lamp  
Miscellaneous o Ship Loose  
in Body Paint o Rear Frame  
Steel White Imron Decals o  
Morgan-Black-Flatbed  
Pickup o Caution-Unit Not  
Designed for Forklift or  
Pallet Jack use Safety Items o  
Aluminum 12 Grab Handle-  
Bolted o Grab Handle  
Mounted on Curbside and  
Roadside Rear o Conspicuity  
Tape Installation o Both  
Sides of body, Across  
Bottom aof Rear Door,  
Underride Protector, and  
Two Inverted Ls on the  
Upper Outboard Corners o  
Apply Tape Where Able:  
Ship Remainder Loose in  
Body

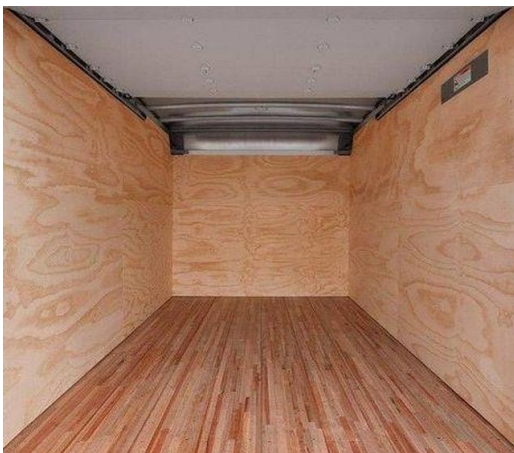
Mileage Type:

**Call 877-783-2723**

**Truckmax Isuzu Homestead**

TruckMax Sales  
29120 S Dixie Hwy  
Homestead, FL 33033

Miles



*All information listed is believed accurate. Pictures, specifications, prices, and all information is subject to change and correction without notice. All liability is expressly disclaimed.*