

2005 Freightliner M2 12.8L MB (BAD ENGINE) 10/20/46K AXLES

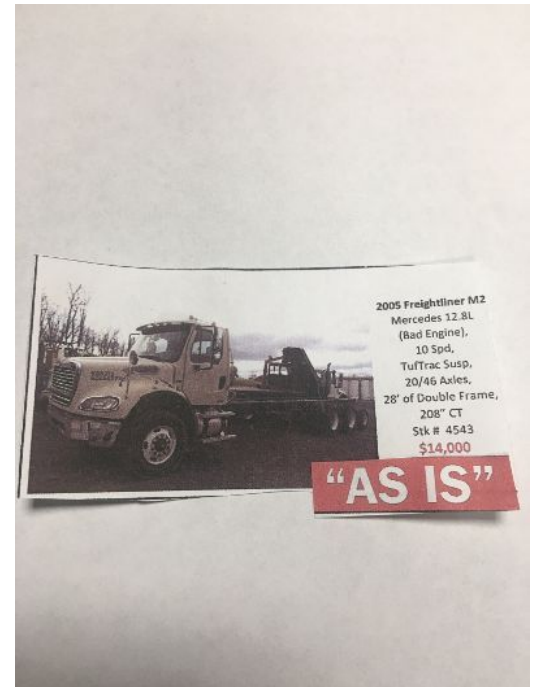
Price: \$14,000
28' DOUBLE CHANNEL FRAME
Condition: Used
Stock#: HEJ/J&M#4543 08/31/20
Listing#: 717694
Type: Truck
Category: Cab and Chassis
Location: GREENCASTLE, Pennsylvania

Call 717-446-1335

**HAROLD JONES USED TRUCKS,
TRAILERS & ETC. SALES**
HAROLD JONES
15332 MOLLY PITCHER HIGHWAY -
ROUTE 11 IN PA
EXIT 1 OR 3 OFF INTERSTATE 81 IN
PENNSYLVANIA
GREENCASTLE, Pennsylvania 17225

Description: 66,000# GVWR, AIR BRAKES, AIR HORN,
HORIZONTAL EXHAUST, LH/RH FENDER
MIRRORS, LIFT AXLE @ REAR OF CHASSIS, 208"
CAB TO C/L OF TANDEM, 28' OF DOUBLE
CHANNEL FRAME, SELLING FOR \$14,000.00 IN "AS
IS" CONDITION & OTHER OPTIONS. CONTACT
HAROLD JONES CELL 717-446-1335 WITH
QUESTIONS.

Overdrive: Yes
Power Steering: Yes
Telescopic: Yes
Double Frame: Yes
Title Information: Clear Title
Transmission Type: 10 Speed OD
Tilt Wheel: Yes
Air Conditioning: Yes
Axle: Tri
Engine Model: 12.8L TURBO DIESEL (BAD ENGINE)
Satellite Radio: No
Abs: Yes
Suspension Type: TufTrac



Structural Damage: No
Apu: No
Suspension Manufacturer: Mercedes
Interior Type: Medium
Front Axle Rating: 20000 lbs
Condition: Below Average
Air Ride Driver Seat: Yes
Axle Configuration: 8 X 4
Fuel Tank: ALUMINUM
Sunvisor: Yes
Mp3: No
Wheel Type: 10 Hole Hub Pilot
Cruise Control: Yes
Engine Brake: No
Rear Axle Rating: 46000 lbs
Engine Make: Mercedes
Color: Beige

All information listed is believed accurate. Pictures, specifications, prices, and all information is subject to change and correction without notice. All liability is expressly disclaimed.