

***RENEGADE***<sup>TM</sup>

# Instruction Manual for Drywall Sander

Mod# RGDSANDL



## 1. DEVICE APPLICATION INSTRUCTIONS

Electric Drywall Sanders belong to the category of hand-held electric tools.

A drywall sander is used to sand and smooth the plastering compound (mud) used in drywall installation. It is used on interior walls as well as ceilings. It is a quick and very efficient way to sand and smooth drywall in large areas.

With various conditions taken into consideration in the design, the device may run at high or low speed. In addition, you may adjust the connection structure at high and low locations respectively, in order to optimize the grinding efficiency and realize user-friendly and compact design.

## 2. SAFETY INSTRUCTIONS



"Caution - Read the operating instructions to reduce the risk of injury"



**Wear ear-muffs.**

The impact of noise can cause damage to hearing.



**Wear a breathing mask.**

Dust which is injurious to health can be generated when working on wood and other materials.  
Never use the device to work on any materials containing asbestos!



**Wear safety goggles.**

Sparks generated during working or splinters, chips and dust emitted by the device can cause loss of sight.

### 2.1 Work Area

- a) Keep work area clean and well lit.
- b) Do not operate power tools in explosive atmospheres, such as in the presence of flammable liquids, gases or dust. Keep children and bystanders away while operating a power tool.

### 2.2 Electrical Safety

- a) Power tool plugs must match the outlet. Never modify the plug in any way. Do not use any adapter plugs with earthed (grounded) power tools.
- b) Avoid body contact with earthed or grounded surfaces such as pipes, radiators, ranges and refrigerators.
- c) Do not expose power tools to rain or wet conditions.
- d) Do not abuse the cord. Never use the cord for carrying, pulling or unplugging the power tool. Keep cord away from heat, oil, sharp edges or moving parts.
- e) When operating a power tool, use an extension cord suitable for its proper use.
- f) If operation in a damp location is unavoidable, be sure to plug the sander into a GFCI protected power supply outlet in order to avoid a serious shock or electrocution.

### 2.3 Personal Safety

## **Notes:**

- a) Stay alert, watch what you are doing and use common sense when operating a power tool. Do not use a power tool while you are tired or under the influence of drugs, alcohol or medication.
- b) Use safety equipment. Always wear eye protection.
- c) Avoid accidental starting. Ensure the switch is in the off position before plugging in.
- d) Remove any adjusting key or wrench before turning the power tool on.
- e) Do not overreach. Keep proper footing and balance at all times.
- f) Dress properly. Do not wear loose clothing or jewel. Keep your hair, clothing and gloves away from moving parts.
- g) If devices are provided for the connection of dust extraction and collection facilities, ensure these are connected and properly used.

### **2.4 Power Tool Use and Care**

- a) Do not force the power tool. Use the correct power tool for your application.
- b) Do not (use the power tool if the switch does not turn it on and off.
- c) Disconnect the plug from the power source before making any adjustments, changing accessories, or storing power tools.
- d) Store idle power tools out of the reach of children and do not allow persons unfamiliar with the power tool or these instructions to operate the power tool.
- e) Maintain power tools. Check for misalignment or binding of moving parts, breakage of parts and any other condition that may affect the power tools operation. If damaged, have the power tool repaired before use.
  - f) Keep cutting tools sharp and clean.
- g) Use the power tool, accessories and tool bits etc., in accordance with these instructions and in the manner intended for the particular type of power tool, taking into account the working conditions and the work to be performed.

### **2.5 Service**

- a) Have your power tool serviced by a qualified repair person using only identical replacement parts.

### **3. Safety Warnings Specific for Sanding Operations**

- a) Do not use excessively oversized sanding disc paper. Follow manufacturers recommendations, when selecting sanding paper.



Before connecting electric tool to the socket, make sure that the supply voltage is in accordance with rated voltage. If the former is greater than latter and the device is powered on by mistake, it may result in damage of devices and injuries of people. As for indefinite supply voltage of socket, never try to plug for use. Besides, the damage of devices may also occur if the supply voltage falls below rated voltage.

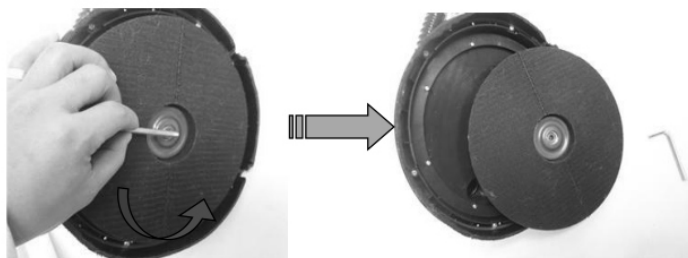
#### 4. Installation (See following picture)

**⚠ Warning:** Prior to the sandpaper replacement or installation, do read safety precautions and installation guide carefully.

#### 4.1. Installation & Adhibit Tray Replacement (See following picture)

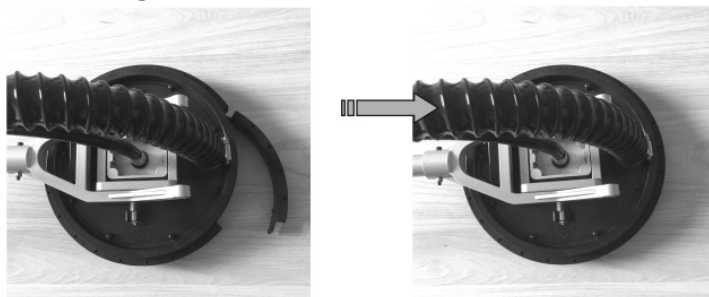
If the adhibit tray ever gets damaged, it can easily be replaced.

##### —Installation Guide

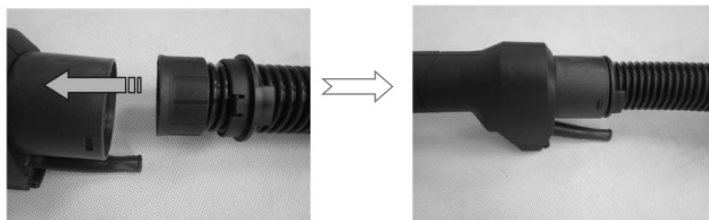


Remove the sandpaper, put the Allen wrench into the hexagon hole in the center of the adhibit tray and then rotate counter-clockwise to take off the damaged tray. Install the new adhibit tray (see above picture).

##### ---Detachable edge for the inside corner



##### —Connect the dust tube with the machine through buckling the button



#### . Switch & Speed Governor Operation

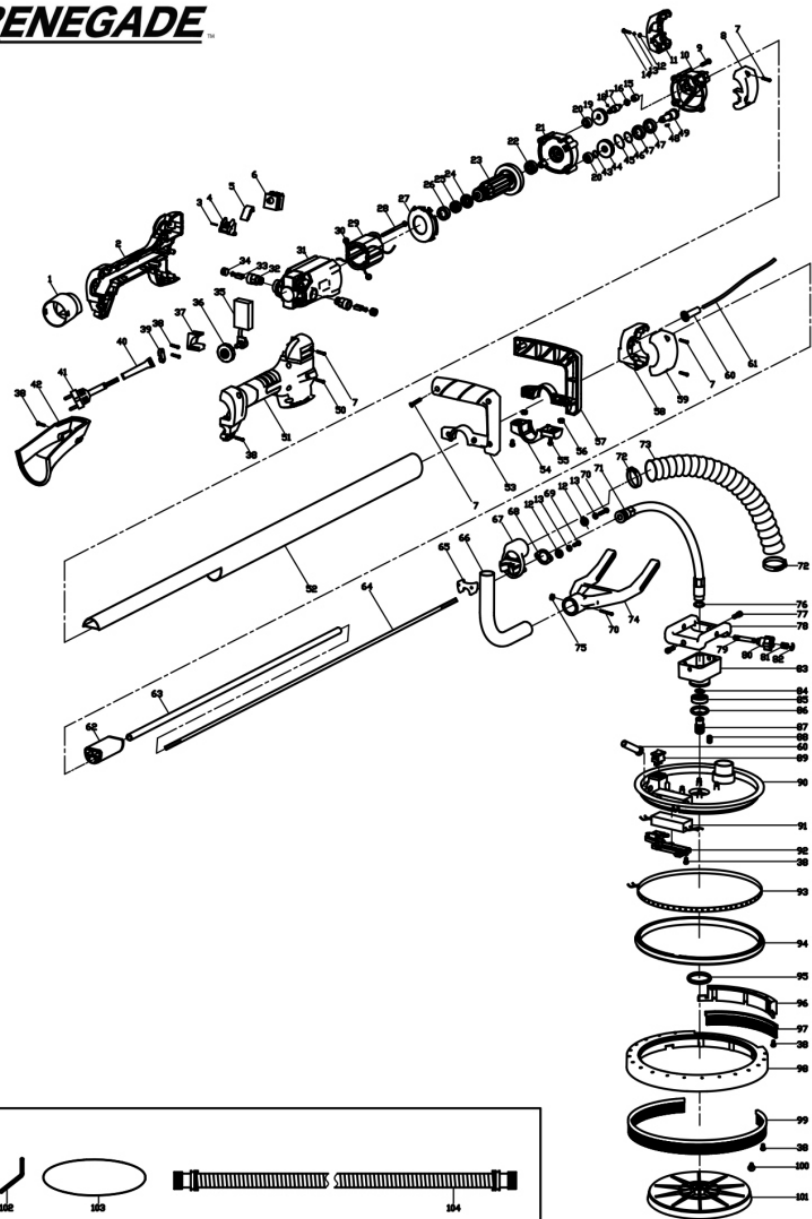
#### Parts List for Drywall Sander

Mod# RGDSANDL

Part#	Description	Qty
1	connector	1
2	left handle	1
3	cylindrical pin Φ1.5X12	1
4	switch pushing lever	1
5	switch button	1
6	switch	1
7	slotted tapping screw ST4X16	15
8	left gear box clamp bracket	1
9	slotted tapping screw ST4X40	4
10	gear box	1
11	right gear box clamp bracket	1
12	flat washer 4	6
13	spring washer 4	6
14	cross recessed pan head screw M4X12	2
15	needle bearing 0609	1
16	washer Φ6.2XΦ10X0.8	1
17	gear shaft	1
18	steel ball Φ3	1
19	driven gear I	1
20	bearing 606-2RS	2
21	middle cover	1
22	bearing 608-2RS	1
23	rotator	1
24	spacer	1
25	bearing 607-2RS	1
26	bearing housing607	1
27	anti-wind ring	1
28	slotted tapping screw ST4X55	2
29	stator	1
30	round tension spring	2
31	motor housing	1
32	carbon brush holder	2
33	carbon brush 6X9X12	2
34	brush holder cover	2
35	speed controller	1
36	speed switch	1
37	mounting slot	1
38	slotted tapping screw ST4X14	18
39	Cable pressing plate	1
40	Cable sleeve	1
41	Cable plug	1
42	connector protector	1
43	snap rings for shaft Φ10	1
44	drive gear II	1
45	snap rings for whole Φ24	1
46	wire snap rings for shaft Φ15	1
47	bearing 6802-2RS	2
48	Semicircular key 3X10	1
49	spindle I	1
50	slotted tapping screw ST4X25	2
51	right handle	1
52	main aluminum pipe	1
53	left assistant holder	1
54	assistant holder lower cover	1
55	cross recessed pan head screw M5X12	2

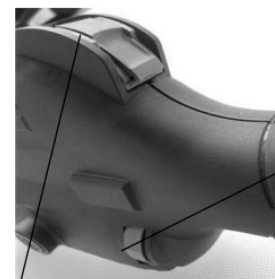
Part#	Description	Qty
56	flange nut M5	2
57	right assistant holder	1
58	Left light cable clamp bracket	1
59	Right light cable clamp bracket	1
60	Cable sleeve	2
61	LED Cable	1
62	adaptor	3
63	inner protective pipe	1
64	flexible drive shaft	1
65	lock block	1
66	bent pipe 25mm	1
67	alloy connector	1
68	press plate	1
69	hex socket screws M4X12	2
70	hex socket screws M4X40	3
71	outer protective pipe	1
72	clamp 25-38	2
73	hose 380	1
74	Y-Support	1
75	lock nut M4	1
76	O-ring	1
77	special screw	2
78	pivot hub	1
79	special bolt	2
80	knob	2
81	spring I	2
82	circlip 6	2
83	mounting plate	1
84	snap rings for shaftΦ12	1
85	bearing 6001-2RS	1
86	snap rings for whole Φ28	1
87	spindle II	1
88	spring II	4
89	LED light switch	1
90	sanding pad cover	1
91	LED light driver	1
92	light driver cover	1
93	LED strip light	1
94	LED light cover	1
95	snap Ring 35	1
96	inner cover edge	1
97	brush segment	1
98	sanding pad cover rim	1
99	brush	1
100	slotted tapping screw ST4X12	8
101	sanding disc pad	1
102	allen backhand S5	1
103	Sandpaper	0
104	suction hose 4m	1

**RENEGADE™**



The switch of the machine is two step switches. As shown in following picture, press the switch button and push forward to power on. Press the switch button and turn back to power off.

The Speed Governor, as shown in the following picture, may be used to regulate the speed, so as to facilitate the operations of workers and improve work quality simultaneously.

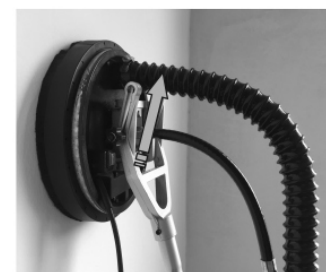


Speed Governor



Switch

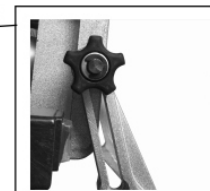
. Work on the wall and ceiling



(fig.1)



(fig.2)

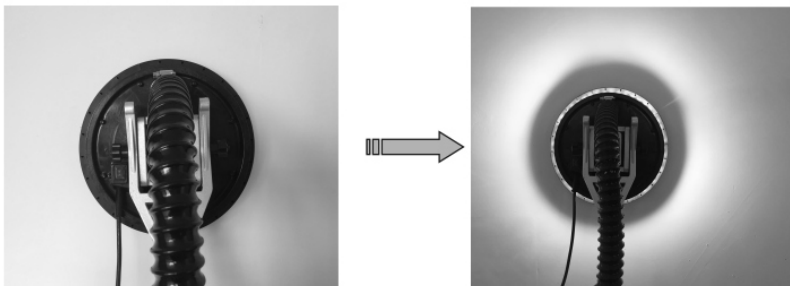


Knob

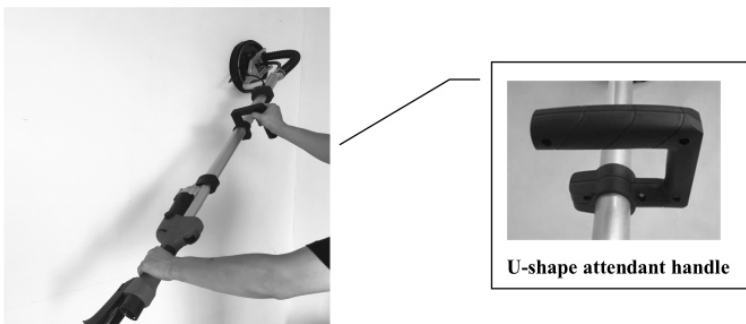
The knob should be fixed in the position as shown in fig. 1 when sanding on the wall.  
Pull the knob out from both sides, push upward to slot and fixed as shown in fig.2.

#### . LED light

When working in the dusky condition, LED strip light could be added for help to check the sanded wall surface is smooth or not.



#### . Attendant handle (optional)



As shown on the picture the operator can sanding the different position of the wall.

#### 8. Cleaning

Regular cleaning should be conducted after sanding.

- Cleaning the devices frequently may help to extend operating life and reduce repair rate. It is recommended to clean the connection sets and components of electric motor without application of water.
- Timely cleaning is recommended after the application of the devices.
- Clean the devices with a hairbrush and a piece of dry cloth, or simply blow it with high pressure gas.

#### 9. Replacement of carbon brush

When the original carbon brush is worn the machine has a set spare carbon brush for replacement.

#### Guide for the replacement of carbon brush :

- 1) Use the screwdriver to open the cover of the carbon brush and take out the carbon brush
- 2) Put the spare carbon brush into the Brush Carrier, use the screwdriver to rotate and fix the cover of carbon brush tightly.

Carbon brush replacement position



#### 11. Specifications

Model No.	RGDSANDL
Power	120Volt 60Hz 750Watt
No Load Speed	600-1500 RPM
Sandpaper diameter	8-7/8" (225mm)
Weight	9.5 Lbs