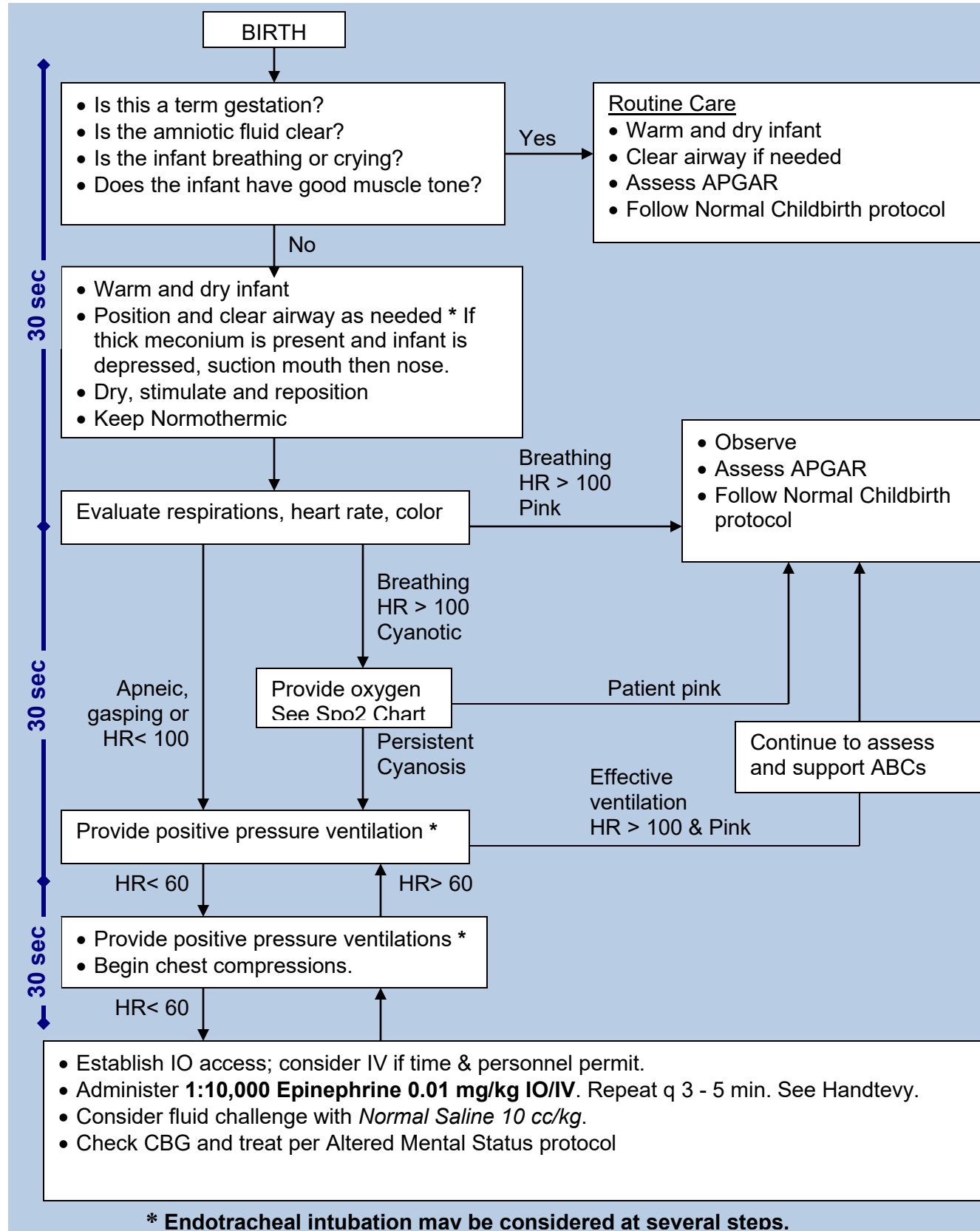


Neonatal Resuscitation – 10.120



NOTES & PRECAUTIONS:

- A. Neonatal age is birth to 28 days.
- B. Do not use atropine in neonatal resuscitation.
- C. If meconium is lightly stained and infant is vigorous (strong respiratory effort, good muscle tone, heart rate > 100 bpm) endotracheal suctioning should not be performed.
- D. An infant may need resuscitation if intrapartum risk factors for asphyxia are present (prolapsed cord, painful bleeding, prolonged rupture of membranes, maternal fever, multiple births, abnormal presentation, maternal hypotension or seizure)
- E. Refer to Neonatal Spo2 Target chart (see below) prior to O2 administration.

KEY CONSIDERATIONS:

Fetal presentation, recent trauma, maternal health/risk factors, maternal medications, previous birth difficulties, APGAR

APGAR SCORE:

	0	1	2
Appearance	Blue/Pale	Body pink, blue extremities	Completely pink
Pulse	Absent	Slow (< 100 bpm)	≥ 100 bpm
Grimace	No response	Grimace	Cough or sneeze
Activity	Limp	Some flexion	Active motion
Respirations	Absent	Slow, irregular	Good, crying

Newborn Target Spo2 after birth:

1 min	60-65%
2 min	65-70%
3 min	70-75%
4 min	75-80%
5 min	80-85%
10 min	85-95%