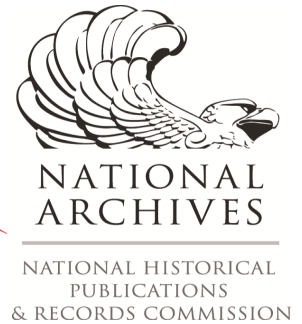


Title: Innovation in 1920s Women's Fashion

Creator: Educator in Nashville



Standards:

US.34: Describe changes in the social and economic status of women during this era, including: **flappers**, birth control, clerical and office jobs, and the rise of women's colleges.

Materials:

- Primary sources
- Graphic Organizer

Primary Sources

1. "American costume, 1914-1934" sketches, page 47: <https://cdm15138.contentdm.oclc.org/digital/collection/p15138coll18/id/758/rec/1>
2. "American costume, 1914-1934" sketches, page 48: <https://cdm15138.contentdm.oclc.org/digital/collection/p15138coll18/id/760/rec/1>
3. "American costume, 1914-1934" sketches, page 49: <https://cdm15138.contentdm.oclc.org/digital/collection/p15138coll18/id/759/rec/1>
4. "Photograph of an American girl, Pauline Kay": <https://cdm15138.contentdm.oclc.org/digital/collection/p15138coll29/id/1831/rec/2>
5. Advertisement for Armstrong's Clothing Store, *The Nashville Tennessean*, August 29, 1926, page 18: *instructions to access on the next page*

Activity Instructions:

- To complete this activity, students will need to have already learned about some of the social, political, and economic changes of the 1920s.
- Display or distribute copies of the primary sources for students to analyze (small groups can share the documents, copies of the documents can be posted around the room, etc.)
- Using the primary sources, students should complete the graphic organizer analyzing the changes in women's fashion during the 1920s to the flapper style.

Instructions for accessing the *Nashville Tennessean* online (Tennessee residents only):

1. Visit the Tennessee Electronic Library at tntel.info
2. Click on the red box labeled "[Genealogy](#)"
3. Scroll down and select "[The Tennessean \(1812-2009\)](#)"
4. Click on the blue "Use This Resource" button
5. Select "Advanced Search," located just under the title ProQuest Historical Newspapers: The Nashville Tennessean
6. In the drop-down menu next to "Publication date," select the option "On this date..."
7. Input the month, day, and year specified in the primary source list above and click the green "Search" button
8. Select the link listing the date and page number specified in the primary source list [Ex. August 29, 1926 (Page 18 of 54)]

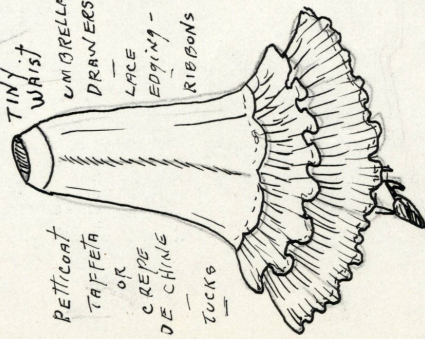
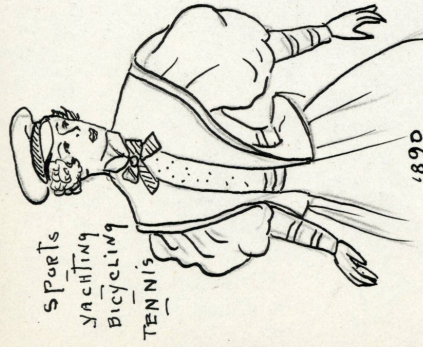
Innovations in 1920s Women's Fashion

According to the primary sources, what styles and articles of clothing were fashionable for women in the 1920s?

How were these new trends similar to the decades prior?

How were these new trends different from the decades prior?

In 3-5 sentences, explain why you think these changes in style may have occurred. (Think about the social, political, and economic changes taking place throughout the early decades of the 20th century.)



AMERICAN COSTUME The Gay Nineties. 1890

By 1890 the bustle had disappeared. Skirts fitted snugly over the hips flaring out bell shape to the floor and ending in a train which had to be held up at times when moving about. The "leg-of-mutton sleeves" had grown to enormous proportions. The forearm section of the sleeve fitted snugly. The picture hat and the pompadour hair-do and the glass-hour waist were the outstanding styles of the gay nineties.

Men wore "Prince Albert" style of clothes. The frock coat with the swallow tail out away, the derby, spats, striped trousers, white vest and dark coat were typical of the attire of most men. Their stiff starched shirts were uncomfortable but desirable. Black patent leather shoes with tops buttoned were sometimes made of cloth. The walking cane and the graceful handle-bar moustaches were "quite the rage".

AMERICAN COSTUME 1900-1934

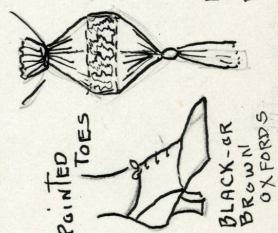
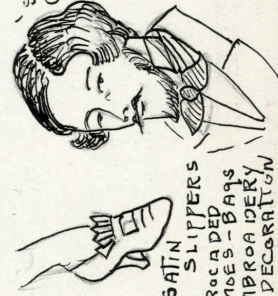
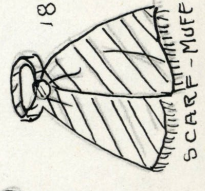
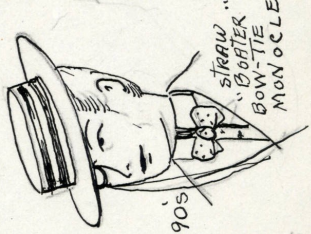
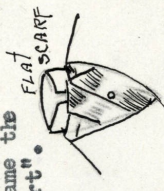
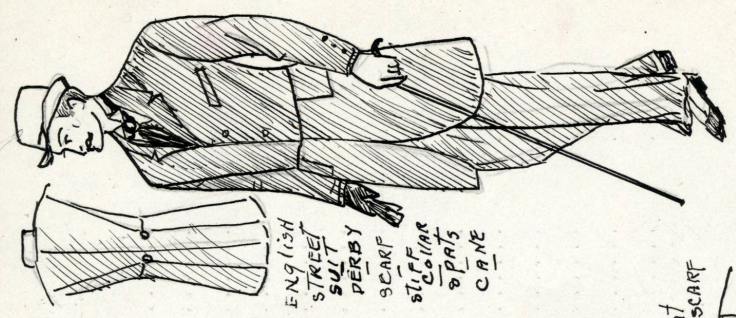
1900. The "dip" in the waist line at the center front was fashionable. The "serpentine" or "morning-glory" skirts were worn with blouses. 1902. The "serpentine" or "morning-glory" skirts were worn with blouses. 1907. Lace yokes with distinctive width of shoulders with horizontal trimmings. Large hats, hair fluffed around face.

1915. The business suit with coat short and double breasted became the vogue for men. Women wore tailored suits with "hobble-skirt". 1916. Short full skirt. "bouffant skirts". During World War I. one piece dresses became favorites.

1917. Long tailored suits. 1918. Dresses were long, simple and lacking in decoration. 1919. Dresses became shorter with tunics.

1924. Women wore boots with riding habits, very short skirts. 1925. Short dresses with low necks in the back. Low waists to hips. 1926. Two piece dresses, simple, short bobs, short skirts. 1929. Long evening gowns with short jackets, uneven skirt lines, and in short in front.

1931. Princess Eugenie hats became popular. 1934. Small hats, short hair. "Boyish Bob" Dresses longer.



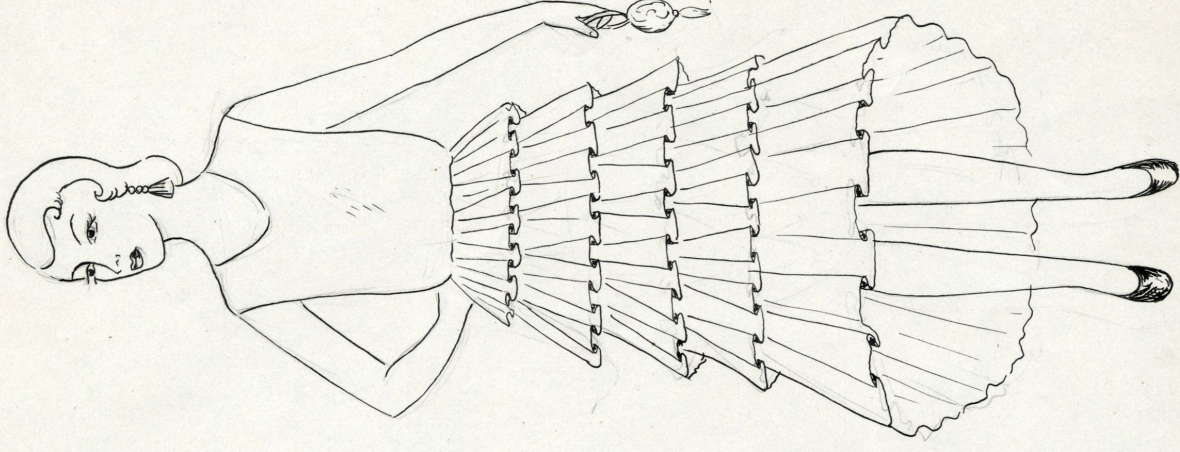
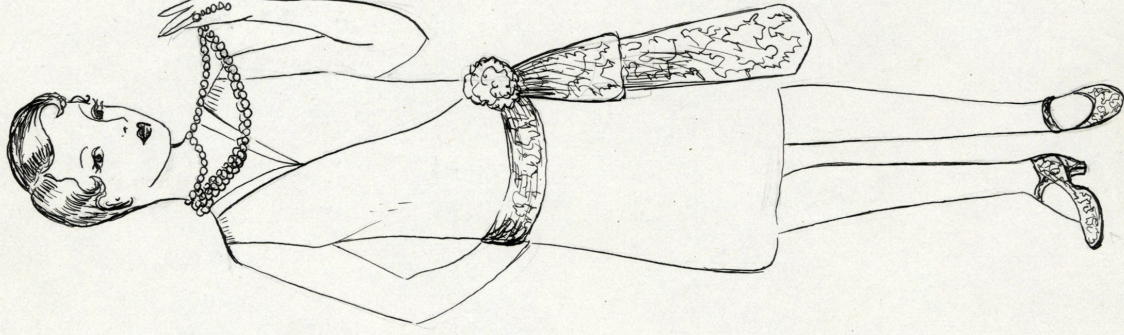
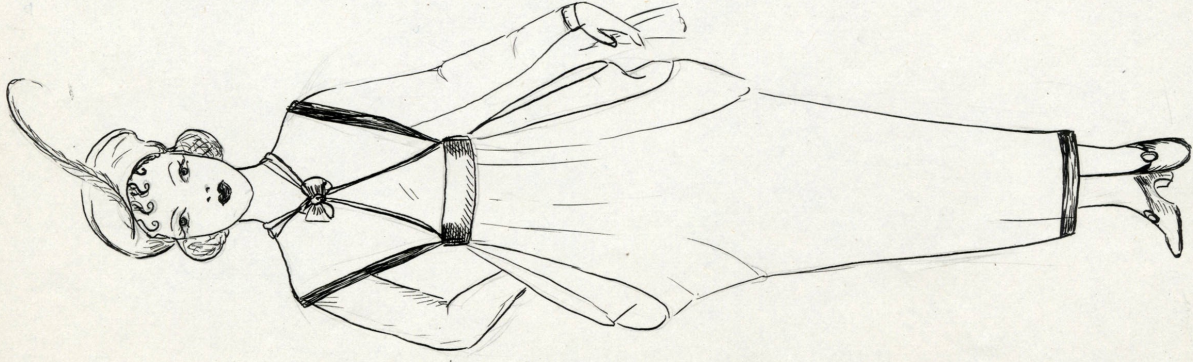


THE GAY NINETIES

c-Burt. 48

"American costume, 1914-1934" page 3:

Located in Charlotte Coleman Burt Family Papers at the Tennessee State Library & Archives.



AMERICAN 1914 - 1934

c. Burt 49

"American costume, 1914-1934" page 2:

Located in the Charlotte Coleman Burt Family Papers at the Tennessee State Library & Archives.



"Photograph of an American girl, Pauline Kay":
Located in the Over Here, Over There Collection

New Dresses



FALL FROCKS

were never so chic and so different. A new shipment has just arrived, with all the newest models and latest Autumn shades

At **\$16.75** and up.

Armstrong's
ARMSTRONG'S CLOTHING STORE

Sport Coats



Here is a collection of the very newest and smartest Fall sport and utility Coats. Colorful tweeds and rough novelty mixtures. Plain, fur or leather trimmed.

At **\$19.75** and Up

Armstrong's
ARMSTRONG'S CLOTHING STORE

Advertisement for Armstrong's Clothing Store:

Located in *The Nashville Tennessean*, August 29, 1926, page 18