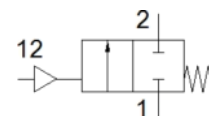
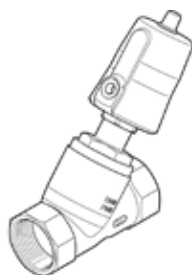


Angle seat valve

VZXF-L-M22C-M-A-G112-350-M1-V4V4T-50-7

Part number: 1002520

FESTO



Data sheet

Feature	values
Design structure	Poppet valve with spring return
Type of actuation	pneumatic
Sealing principle	soft
Assembly position	Any
Mounting type	Line installation
Process valve connection	G1 1/2
Nominal diameter DN	40
Nominal size	35 mm
Valve function	2/2 closed, monostable
Flow direction	non reversible
Medium pressure	0 ... 7 bar
Nominal pressure of process valve	40
Exhaust-air function	not throttleable
Type of reset	mechanical spring
Type of piloting	With external control
Pneumatic connection	G1/8
Working pressure	6 ... 10 bar
Medium	Vapour Inert gases Filtered compressed air, degree of filtration 200 µm
Operating medium	Compressed air in accordance with ISO8573-1:2010 [7:4:4]
Max. viscosity	600 mm ² /s
Medium temperature	-40 ... 200 °C
Ambient temperature	-10 ... 60 °C
Flow rate Kv	25 m ³ /h
Materials note	Contains PWIS substances Conforms to RoHS
Materials information, housing	Stainless steel casting
Material number for housing	1.4408
Notes on materials for drive head	Stainless steel
Information on materials, spindle washer	PTFE
Information on materials, seat seal	PTFE
Product weight	2,500 g
CE symbol (see declaration of conformity)	according to EU printing device guideline
Corrosion resistance classification CRC	3