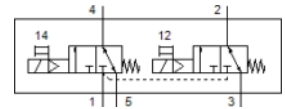
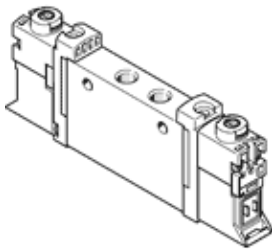


Solenoid valve

VUVG-L10-T32C-MT-M5-1P3

Part number: 574348

FESTO



Data sheet

| Feature | values |
|--|---|
| Valve function | 2x3/2 closed, monostable |
| Type of actuation | electrical |
| Valve size | 10 mm |
| Standard nominal flow rate | 135 l/min |
| Working pressure | 2.5 ... 8 bar |
| Design structure | Piston slide |
| Type of reset | mechanical spring |
| Protection class | IP40 IP65 with plug socket |
| Authorization | RCM Mark c CSA us (OL) c UL us - Recognized (OL) |
| Nominal size | 1.9 mm |
| Exhaust-air function | throttleable |
| Sealing principle | soft |
| Assembly position | Any |
| Manual override | detenting Pushing Covered |
| Type of piloting | Piloted |
| Pilot air supply | Internal |
| Note on forced dynamisation | Switching frequency at least once a week |
| Pilot pressure | 2 ... 8 bar |
| Suitability for vacuum | No |
| Switching time off | 11 ms |
| Switching time on | 8 ms |
| Duty cycle | 100% |
| Characteristic coil data | 24 V DC: 1 W 24 V DC: low-current phase 0.3 W, high-current phase 1.0 W |
| Permissible voltage fluctuation | +/- 10 % |
| Operating medium | Compressed air in accordance with ISO8573-1:2010 [7:4:4] |
| Note on operating and pilot medium | Lubricated operation possible (subsequently required for further operation) |
| Restriction ambient and medium temperature | -5 - 50 °C Without holding current reduction |
| Corrosion resistance classification CRC | 2 |
| Medium temperature | -5 ... 60 °C |
| Ambient temperature | -5 ... 60 °C |
| Product weight | 54 g |
| Electrical connection | Via electrical connection plate |
| Mounting type | Optional on manifold rail with through hole |
| Pneumatic connection, port 1 | M5 |
| Pneumatic connection, port 2 | M5 |

| Feature | values |
|---------------------------------|------------------------|
| Pneumatic connection, port 4 | M5 |
| Pneumatic connection, port 5 | M5 |
| Materials note | Conforms to RoHS |
| Materials information for seals | HNBR NBR |
| Materials information, housing | Wrought Aluminum alloy |