

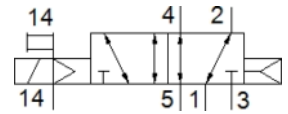
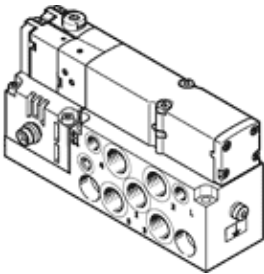
Solenoid valve

VMPA2-M1H-M-S-G1/8-PI

Part number: 537972

FESTO

For valve manifold MPA-S.



Data sheet

Feature	values
Valve function	5/2 monostable
Type of actuation	electrical
Valve size	20 mm
Standard nominal flow rate	700 l/min
Working pressure	-0.9 ... 10 bar
Design structure	Piston slide
Type of reset	Air spring
Protection class	IP65 to IEC 60529 in assembled condition
Authorization	c UL us - Recognized (OL)
Exhaust-air function	throttleable
Sealing principle	soft
Assembly position	Any
Manual override	detenting Pushing
Type of piloting	Piloted
Pilot air supply	external
Flow direction	reversible
Freedom from overlap	Yes
Note on forced dynamisation	Switching frequency at least once a week
Signal status display	Yes
Pilot pressure	3 ... 8 bar
Suitability for vacuum	Yes
Standard nominal flow rate with QS-8	670 l/min
Switching time off	28 ms
Switching time on	15 ms
Max. positive test pulse with logic 0	400 µs
Max. negative test pulse with logic 1	900 µs
Permissible voltage fluctuation	+/- 25 %
Operating medium	Compressed air in accordance with ISO8573-1:2010 [7:4:4]
Note on operating and pilot medium	Lubricated operation possible (subsequently required for further operation)
CE symbol (see declaration of conformity)	according to EU-EMV guideline
Vibration resistance	Transport application test at severity level 2 in accordance with FN 942017-4 and EN 60068-2-6
Shock resistance	Shock test with severity level 2 in accordance with FN 942017-5 and EN 60068-2-27
Corrosion resistance classification CRC	1
Storage temperature	-20 ... 40 °C
Medium temperature	-5 ... 50 °C
Ambient temperature	-5 ... 50 °C
Max. tightening torque, valve mounting	0.65 Nm
Product weight	325 g

Feature	values
Electrical connection	Plug to EN 60947-5-2 M8x1 4-pin
Mounting type	with through hole
Auxiliary pilot air port 12/14	M5
Pilot exhaust port 82/84	M5
Pneumatic connection, port 1	G1/8
Pneumatic connection, port 2	G1/8
Pneumatic connection, port 3	G1/8
Pneumatic connection, port 4	G1/8
Pneumatic connection, port 5	G1/8
Materials note	Conforms to RoHS
Materials information for seals	NBR
Materials information, housing	Aluminum die cast