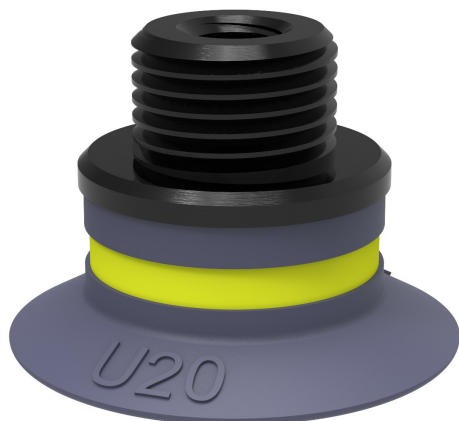


Suction cup U20 HNBR, G1/8" male/M5 female, with dual flow control valve, U20.47.02DD



- Suitable for objects with flat or slightly curved surfaces.
- Also used for concave objects.



General

Curve radius	0.51 in
Movement, vertical max.	0.10 in
Application	Glass handling, High/low temp cup (plastic), Mark Free, Plastic injection molded parts
Leakage flow, max.	0.13 scfm
Material	HNBR
Suction cup model	U
Suction cup shape	Universal
Valve restriction	0.03 in
Volume	0.06 in ³
Weight	0.04 oz

Fitting

Fitting size	1/8", M5
Fitting style	Female/Male
Fitting type	G-thread, M-thread
Fitting option	Dual flow control valve

Dimension

Height	0.61 in
Outer diameter	0.87 in

Performance — lifting forces

		
6 -inHg	1.33 lbf	1.33 lbf
18 -inHg	2.7 lbf	1.98 lbf
27 -inHg	3.6 lbf	2.2 lbf

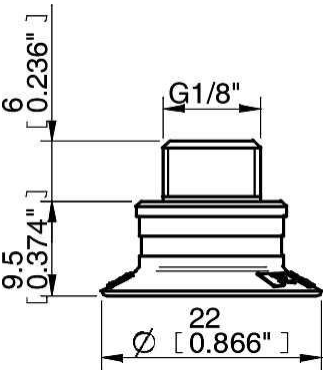
Material

	HNBR 50° Shore A
Color	Blue
Hardness	50 °Shore A
Temperature	-22 – 284 °F

Material resistance

	HNBR 50° Shore A
Alcohol	++
Concentrated acids	+
Ethanol	N/A
Hydrolysis	++
Methanol	N/A
Oil	+++
Oxidation	+++
Gasoline	+++
Wear resistance	+++
Weather and ozone	+++

Dimensional drawings



Spare parts

	Part no.
Fitting G1/8" male/M5 female, with dual flow control valve	o2DD
Suction cup U20 HNBR	U20.47

Accessories

	Part no.
Fitting 1/8" NPT male, with dual flow control valve	02DC
Fitting 1/8" NPT male, with mesh filter	02AC
Fitting 5xM5 female	02AE
Fitting 5xM5 female, with dual flow control valve	02DE
Fitting G1/8" male, with mesh filter	02AB
Fitting G1/8" male, with mesh filter and dual flow control valve	02DB
Fitting G1/8" male/M5 female	02AD
Fitting G1/8" male/M5 female, PA	02CD
Fitting G1/8" male/M5 female, with mesh filter	02AF
Fitting M5 female	02AA
Fitting M5 female, with dual flow control valve	02DA
Suction cup U20 Chloroprene	U20.10
Suction cup U20 Silicone	U20.20