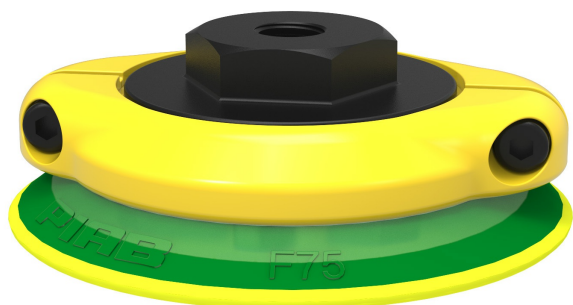


# Suction cup F75P Polyurethane 30/60, 1/8" NPSF female, with mesh filter, F75P.4K.07NA



- Suitable for flat and rough surfaces.
- Fair stability and little inherent movement.
- Recommended when the lifting force is parallel to the surface of the object.
- Dual hardness allowing strength and stability in conjunction with softness and flexibility.
- DURAFLEX® material features the elasticity of rubber in combination with the wear resistance of polyurethane.
- The DURAFLEX® material is mark-free.

## General

Curve radius	5.91 in
Movement, vertical max.	0.08 in
Application	Mark Free, Dry sheet metal
Material	Polyurethane (PU30), Polyurethane (PU60)
Suction cup model	F
Suction cup shape	Flat
Volume	1.16 in <sup>3</sup>
Weight	0.99 oz

## Fitting

Fitting size	1/8"
Fitting style	Female
Fitting type	NPSF-thread
Fitting option	Filter mesh

## Dimension

Height	1.02 in
Outer diameter	3.03 in

## Performance — lifting forces

		
6 -inHg	15.7 lbf	9.9 lbf
18 -inHg	43.4 lbf	39.6 lbf
27 -inHg	61.4 lbf	69.2 lbf

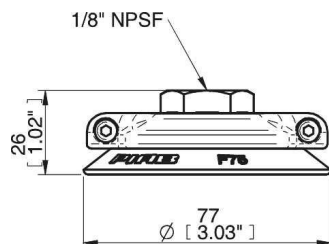
## Material

	Polyurethane (PU30)	Polyurethane (PU60)
Color	Yellow	Green transparent
Hardness	30 °Shore A	60 °Shore A
Temperature	50 – 122 °F	50 – 122 °F

## Material resistance

	Polyurethane (PU30)	Polyurethane (PU60)
Alcohol	N/A	N/A
Concentrated acids	+	+
Ethanol	+	+
Hydrolysis	+	+
Methanol	-	-
Oil	+++	+++
Oxidation	-	-
Gasoline	+	+
Wear resistance	+++	+++
Weather and ozone	+++	+++

## Dimensional drawings



## Spare parts

	Part no.
Suction cup F75P Polyurethane 30/60	F75P.4K
Fitting 75, 1/8" NPSF female, clamp ring with mesh filter	07NA
Cone Valve for Fitting 75	01.00.729

## Accessories

	Part no.
Thread insert G3/8" male, with O-ring and mesh filter for Vacuum Gripper System (VGS)	01.07.148
Suction cup F75P Polyurethane 60 with collar for Vacuum Gripper System (VGS)	F75P.5E
Suction cup F75P Polyurethane 60	F75P.4E
Suction cup F75P Polyurethane 30/60 with collar for Vacuum Gripper System (VGS)	F75P.5K
Fitting 75, G3/8" female, clamp ring with mesh filter	07ND
Fitting 75, G3/8" female, with cone valve	07VD
Fitting 75, G1/2" female, clamp ring with mesh filter	07NF
Fitting 75, 3/8" NPSF female, with mesh filter	07NE