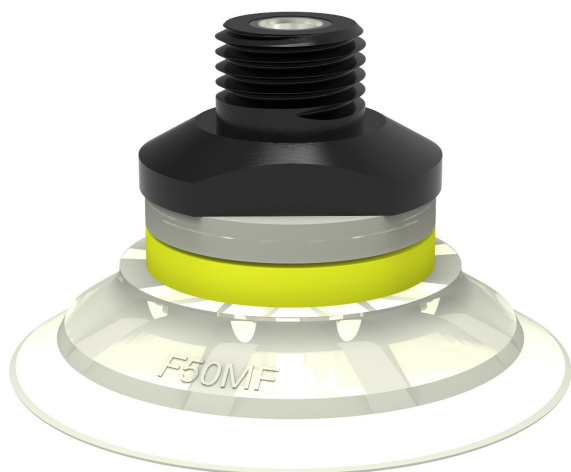


Suction cup F50MF Thermoelastic polyurethane, 1/4" NPT male, with dual flow control valve, F50MF.40.05DC



- Suction cup of TPU, a mark free material that leaves no trace on the object being handled.
- Suitable for flat surfaces.
- Good stability and little inherent movement.
- Recommended when the lifting force is parallel to the surface of the object.

General

Curve radius	3.74 in
Movement, vertical max.	0.08 in
Application	Mark Free
Leakage flow, max.	0.34 scfm
Material	Thermoplastic Polyurethane (TPE-U)
Suction cup model	F-MF
Suction cup shape	Flat
Valve restriction	0.04 in
Volume	0.61 in ³
Weight	0.35 oz

Fitting

Fitting size	1/4"
Fitting style	Male
Fitting type	NPT-thread
Fitting option	Dual flow control valve

Dimension

Height	1.28 in
Outer diameter	2.09 in

Performance — lifting forces

		
6 -inHg	5.51 lbf	6.97 lbf
18 -inHg	20.7 lbf	18.4 lbf
27 -inHg	31.7 lbf	24.1 lbf

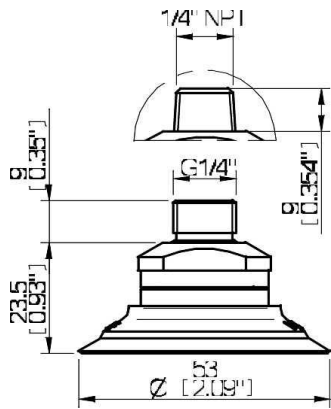
Material

	Thermoplastic Polyurethane (TPE-U)
Color	White transparent
Hardness	81 °Shore A
Temperature	-4 – 176 °F

Material resistance

	Thermoplastic Polyurethane (TPE-U)
Alcohol	++
Concentrated acids	-
Ethanol	N/A
Hydrolysis	-
Methanol	N/A
Oil	+++
Oxidation	++
Gasoline	-
Wear resistance	+++
Weather and ozone	+++

Dimensional drawings



Spare parts

	Part no.
Suction cup F50MF Thermoelastic polyurethane	F50MF.40
Fitting 1/4" NPT male, with dual flow control valve	05DC

Accessories

	Part no.
Fitting G3/8" male, 50, with mesh filter and dual flow control valve	05DD
Fitting G3/8" male, 50, with mesh filter	05AD
Fitting G1/4" male, with dual flow control valve	05DB
Fitting G1/4" male, 50, with mesh filter	05AB
Fitting 5x1/8" NPSF female, 50, with dual flow control valve	05DF
Fitting 5x1/8" NPSF female, 50	05AF
Fitting 3/8" NPT male, with mesh filter	05AE
Fitting 3/8" NPT male, with dual flow control valve	05DE
Fitting 1/8" NPSF female, 50, with mesh filter	05AG
Fitting 1/8" NPSF female, 50, with dual flow control valve	05DA
Fitting 1/8" NPSF female, 50, PA	05CA
Fitting 1/8" NPSF female, 50	05AA
Fitting 1/4" NPT male, with mesh filter	05AC