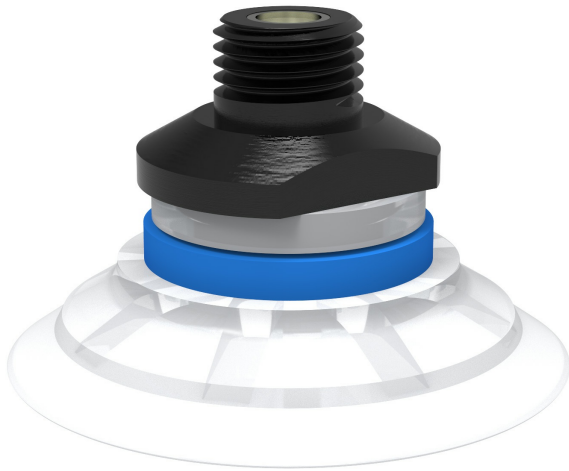


# Suction cup F50-2 Silicone FCM, 1/4" NPT male, with mesh filter, F50-2.21.05AC



- The silicone material complies with FDA 21 CFR 177.2600 & EU 1935/2004.
- Suitable for flat objects.
- Good stability and little inherent movement.
- Recommended when the lifting force is parallel to the surface of the object.
- Cleats prevent thin, sensitive objects from being deformed and gives extra friction when the lifting force is parallel.

## General

|                         |   |
|-------------------------|---|
| Curve radius            | 2.17 in   |
| Movement, vertical max. | 0.12 in   |
| Application             | Food contact materials (FDA & EU), non-detectable |
| Material                | Silicone (SIL FDA)                                |
| Suction cup model       | F   |
| Suction cup shape       | Flat  |
| Volume                  | 0.61 in <sup>3</sup>                              |
| Weight                  | 0.49 oz   |

## Fitting

|                |             |
|----------------|-------------|
| Fitting size   | 1/4"        |
| Fitting style  | Male        |
| Fitting type   | NPT-thread  |
| Fitting option | Filter mesh |

## Dimension

|                |         |
|----------------|---------|
| Height         | 1.28 in |
| Outer diameter | 2.09 in |

## Performance — lifting forces

|          |  |  |
|----------|---|---|
| 6 -inHg  | 8.09 lbf  | 5.4 lbf   |
| 18 -inHg | 16.6 lbf  | 8.99 lbf  |
| 27 -inHg | 21.6 lbf  | 11.2 lbf  |

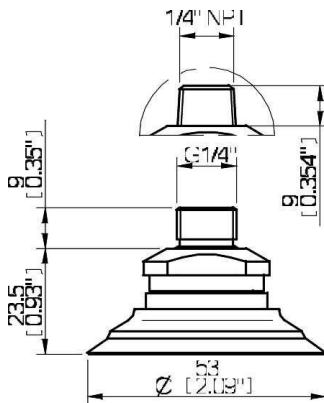
## Material

|             |                    |
|-------------|--------------------|
|             | Silicone (SIL FDA) |
| Color       | Transparent        |
| Hardness    | 50 Shore A         |
| Temperature | -40 – 392 °F       |

## Material resistance

|                    |                    |
|--------------------|--------------------|
|                    | Silicone (SIL FDA) |
| Alcohol            | ++                 |
| Concentrated acids | -                  |
| Ethanol            | N/A                |
| Hydrolysis         | +                  |
| Methanol           | N/A                |
| Oil                | -                  |
| Oxidation          | +++                |
| Gasoline           | -                  |
| Wear resistance    | ++                 |
| Weather and ozone  | +++                |

## Dimensional drawings



## Spare parts

|   | Part no. |
|---|----------|
| Fitting 1/4" NPT male, with mesh filter | 05AC     |
| Suction cup F50-2 Silicone FCM          | F50-2.21 |

## Accessories

|  | Part no. |
|--|----------|
| Fitting 1/8" NPSF female, 50, with mesh filter | 05AG     |
| Fitting G1/4" male, 50, with mesh filter       | 05AB     |