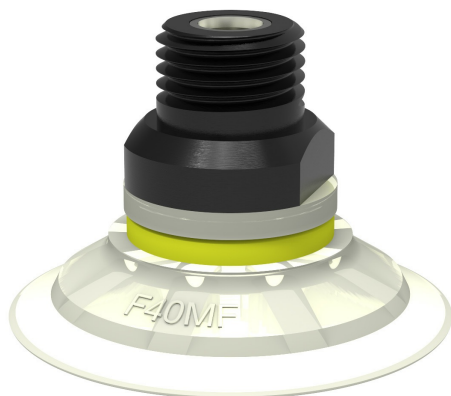


# Suction cup F40MF Thermoelastic polyurethane, 1/4" NPT male, with dual flow control valve, F40MF.40.04DC



- Suction cup of TPU, a mark free material that leaves no trace on the object being handled.
- Suitable for flat surfaces.
- Good stability and little inherent movement.
- Recommended when the lifting force is parallel to the surface of the object.



## General

Curve radius	2.36 in
Movement, vertical max.	0.08 in
Application	Mark Free
Material	Thermoplastic Polyurethane (TPE-U)
Suction cup model	F-MF
Suction cup shape	Flat
Volume	0.29 in <sup>3</sup>
Weight	0.21 oz

## Fitting

Fitting size	1/4"
Fitting style	Male
Fitting type	NPT-thread
Fitting option	Dual flow control valve

## Dimension

Height	1.10 in
Outer diameter	1.65 in

## Performance — lifting forces

		
6 -inHg	4.05 lbf	3.6 lbf
18 -inHg	12.8 lbf	11 lbf
27 -inHg	18.7 lbf	12.8 lbf

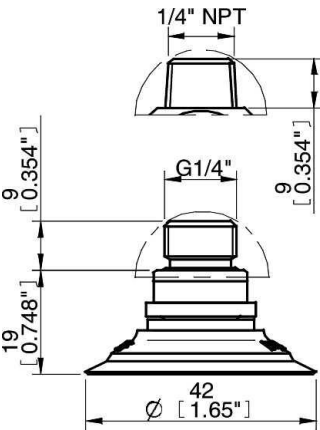
Material

	Thermoplastic Polyurethane (TPE-U)
Color	White transparent
Hardness	81 °Shore A
Temperature	-4 – 176 °F

Material resistance

	Thermoplastic Polyurethane (TPE-U)
Alcohol	++
Concentrated acids	-
Ethanol	N/A
Hydrolysis	-
Methanol	N/A
Oil	+++
Oxidation	++
Gasoline	-
Wear resistance	+++
Weather and ozone	+++

Dimensional drawings



Spare parts

	Part no.
Suction cup F40MF Thermoelastic polyurethane	F40MF.40
Fitting 1/4" NPT male, with dual flow control valve	o4DC

## Accessories

	Part no.
Fitting G3/8" male, 30–40, with mesh filter	04AD
Fitting G3/8" male, 30–40, with dual flow control valve	04DD
Fitting G1/4" male, 30–40, with dual flow control valve	04DB
Fitting G1/4" male, 30–40, with mesh filter	04AB
Fitting 5x1/8" NPSF female, 30–40, with dual flow control valve	04DF
Fitting 5x1/8" NPSF female, 30–40	04AF
Fitting 3/8" NPT male, with mesh filter	04AE
Fitting 3/8" NPT male, with dual flow control valve	04DE
Fitting 1/8" NPSF female, 30–40, with mesh filter	04AG
Fitting 1/8" NPSF female, 30–40, with dual flow control valve	04DA
Fitting 1/8" NPSF female, 30–40, PA	04CA
Fitting 1/8" NPSF female, 30–40	04AA
Fitting 1/4" NPT male, with mesh filter	04AC